

COLORBODY™ PORCELAIN
MAGMA™



MAGMA™

COLORBODY™ PORCELAIN



floor • wall • countertop

Sleek and eccentric, style erupts with this elegant and durable ColorBody™ Porcelain tile. Ranging from an ancient stone look into a more contemporary form, Magma™ comes in four versatile visuals – Flat, Hammered, Diagonal and Grooved. For utmost color compatibility for your space, this collection is offered in various shades of gray, as well as, light polished and unpolished options. Turn any space, residential or commercial, into a luxurious paradise with hot, new Magma™.



Photo features Lava, Flat (Unpolished) 12 x 24 field tile in a grid pattern on the floor.

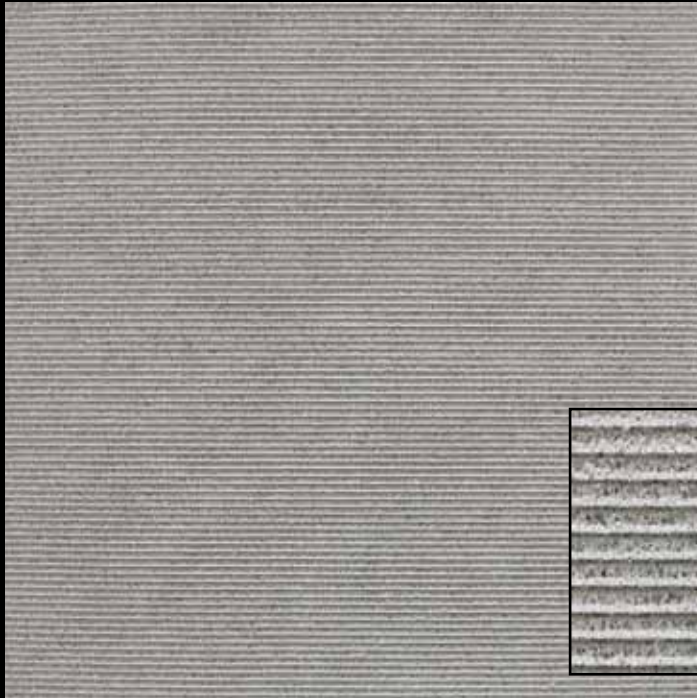
floor • wall • countertop

MAGMA™

COLORBODY™ PORCELAIN

Field Tile

GROOVED – Available in Unpolished and Light Polished.



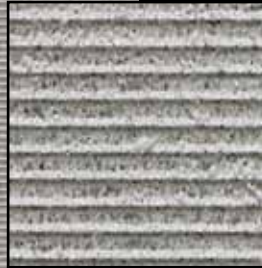
ASH MG90
GROOVED



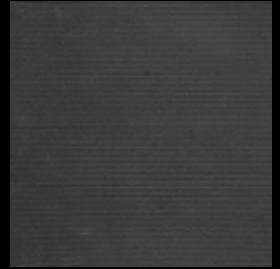
ELEMENT MG91
GROOVED



LAVA MG92
GROOVED

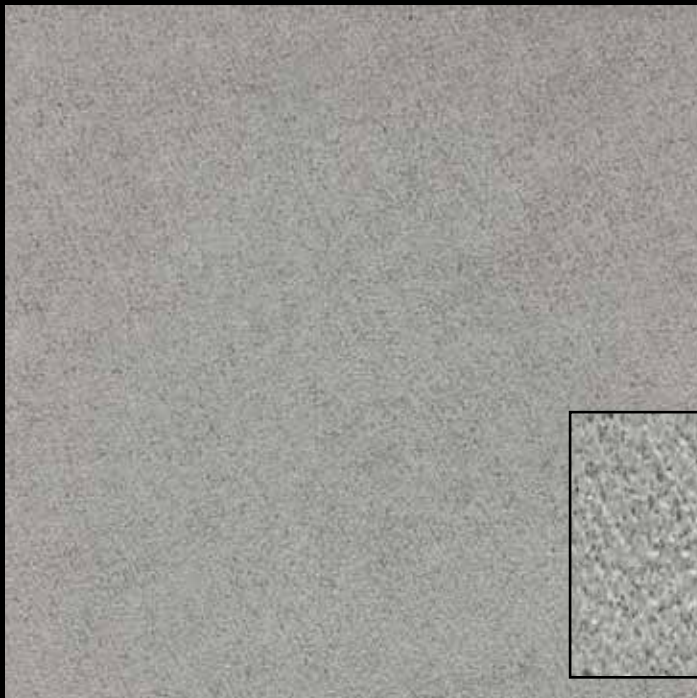


Close-up of
Grooved Tile



CORE MG93
GROOVED

DIAGONAL – Available in Unpolished only



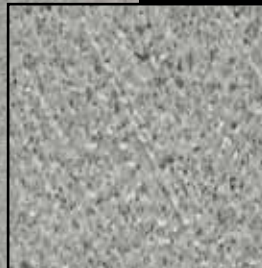
ASH MG80
DIAGONAL



ELEMENT MG81
DIAGONAL



LAVA MG82
DIAGONAL

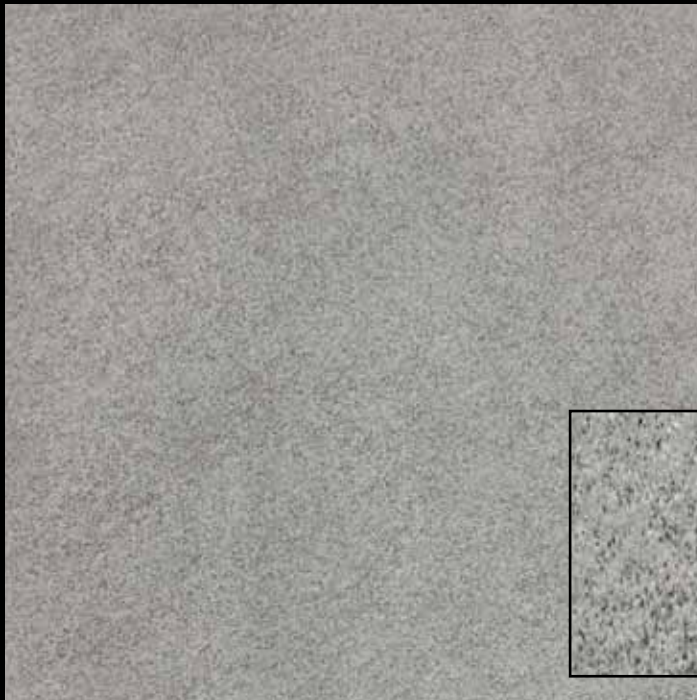


Close-up of
Diagonal Tile



CORE MG83
DIAGONAL

HAMMERED – Available in Unpolished only.



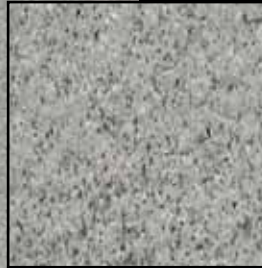
ASH MG70
HAMMERED



ELEMENT MG71
HAMMERED



LAVA MG72
HAMMERED

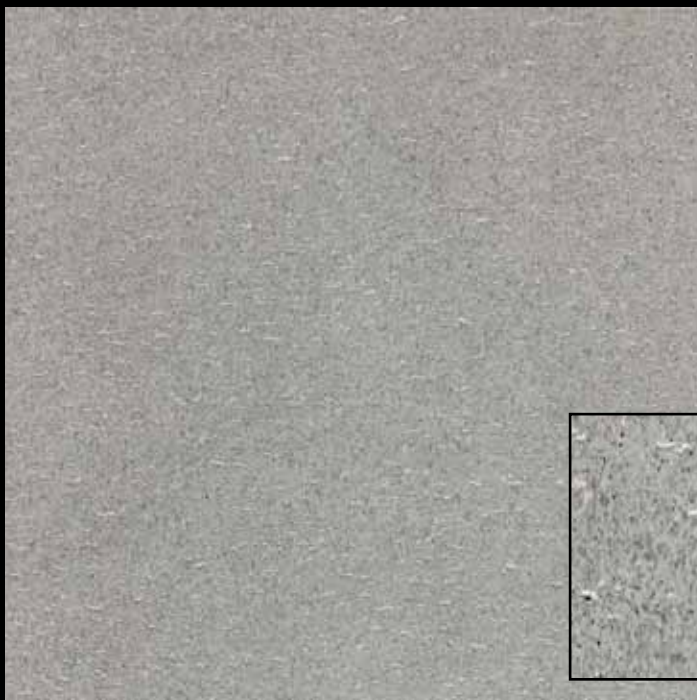


Close-up of
Hammered Tile



CORE MG73
HAMMERED

FLAT – Available in Unpolished and Light Polished.



ASH MG60
FLAT



ELEMENT MG61
FLAT



LAVA MG62
FLAT







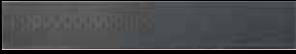



Close-up of
Flat Tile

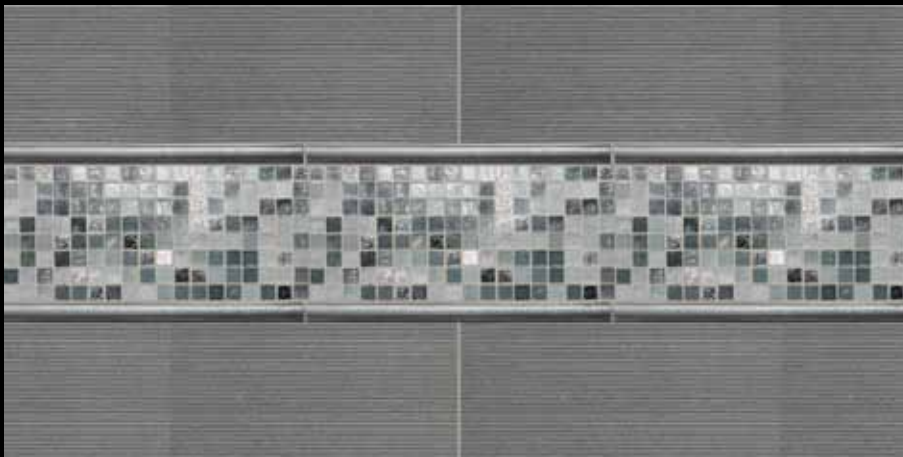


CORE MG63
FLAT

CREATIVE IDEAS

<i>Color</i>		
	ASH	LAVA
<i>Accent</i>		
	CITY LIGHTS LONDON CL60 MOSAIC	MARACAS GLASS EVERGLADES P664 MOSAIC
<i>Color</i>		
	ELEMENT	CORE
<i>Accent</i>		
	URBAN METALS GUNMETAL UM03 Spiral Floor/Wall Border	MASSALIA PEWTER MS90 Pinnacle Accent Strip

Backsplash Design Ideas



Backsplash features Lava Grooved with City Lights 1 x 1 London mosaic and Urban Metals in Gunmetal 3/4 x 12 Ellipse wall liner.

SIZES

		SQ.FT. CARTON	PIECES PER CARTON
18 x 36 Field Tile ▲	17-11/16" x 35-7/16" (45.0 cm x 90.0 cm)	13.20	3
12 x 24 Field Tile	11-13/16" x 23-5/8" (30.0 cm x 60.0 cm)	11.81	6

▲ Flat surface only (Unpolished & Light Polished)

Additional linear and rectangular sizes available through Linear Options™ - Daltile's linear cutting service. Visit www.daltile.com/lineartoptions for sizes and order information.

RESIDENTIAL USAGE

FLOORS	WALLS	COUNTERTOPS	EXTERIOR PATIOS	EXTERIOR POOL DECKS
F	W	C	EP*	ED**

*Unpolished only

**Hammered (Unpolished) only

COMMERCIAL USAGE

	INTERIOR			EXTERIOR	
	RESIDENTIAL	LIGHT COMMERCIAL	COMMERCIAL	RESIDENTIAL	COMMERCIAL
Floors/Patios	✓	✓*	✓*	✓*	✓**
Walls/Backsplashes	✓	✓	✓	✓	✓
Countertops	✓	✓	✓	✓	✓
Pool Decking**	✓	✓	✓	✓	✓
Pool Linings	✓	✓	✓	✓	✓




Suitable for freezing and non-freezing climates when proper installation methods are followed.

Hammered Unpolished Finish: Suitable for exterior patios (including pool decks) and walls in freezing and non-freezing climates when proper installation methods are followed.

*Unpolished only

**Hammered (Unpolished) only

TRIM

TYPE	NUMBER	SIZE	PIECES PER CARTON
 Bullnose*	S-44F9	4 x 24	10
 Cove Base**	S-36C9T	6 x 12	30
 Cove Base Corner**	SC-36C9T	1 x 6	15

*Available in Flat surface Unpolished and Light Polished only

**Available in Flat surface Unpolished only

SHADE VARIATION



MEDIUM (V2)

Color variation within each tile.

INSTALLATION

THICKNESS	GROUT JOINT RECOMMENDATION
3/8"	1/8" (3/16" when rectangular sizes are used in a staggered brick-joint pattern, where the overlap does not exceed 33%)

SLIP RESISTANCE (WET) : 3

The higher the rating, the higher the slip resistance.

1	< .50
2	.50 - .59
3	≥ .60

TEST RESULTS (Unpolished Only)

	ASTM#	Unpolished Results	Light Polished Results
Water Absorption	C373	<0.5%	<0.5%
Breaking Strength	C648	>500 lbs	>500 lbs
Scratch Hardness	MOHS	9.0	9.0
Chemical Resistance	C650	Resistant	Resistant
Coefficient of Friction	C1028	Wet: ≥0.60 Dry: ≥0.70	Wet: ≥0.50 Dry: ≥0.60

NOTES

Special care should be taken when grouting with dark pigmented colors. A grout release is recommended to prevent finely powdered pigments from lodging in the pores of the tile surface. Use of a latex modified thin-set is recommended for installation.

Special care needs to be given when installing tiles 20" and larger. Please refer to www.daltile.com/LargeTiles for information.

Since there are variations in all fired ceramic products, the tile and trim supplied for your particular installation may not match these samples. Final color selection should be made from actual tiles and trim and not from tile and trim samples or color reproductions. Manufactured in accordance with ANSI A137.1 standards.

For additional information refer to "Factors to Consider" at: www.daltile.com/CommercialFactors

Water, oil, grease etc. create slippery conditions. Floor applications with exposure to these conditions require extra caution in product selection.
Not for use on ramps.

MAGMA™

COLORBODY™ PORCELAIN



floor • wall • countertop



daltile
greenworks™
ENVIRONMENTAL LEADERSHIP THAT WORKS

By their very design, Daltile products can help make it easier for you to earn LEED™ points and/or points towards many industry leading green home building programs. From using recycled material content to establishing manufacturing facilities within 500 miles of your project, we help ensure you don't have to compromise your design to be environmentally conscious. For detailed information, visit daltilegreenworks.com.



TRU-EDGE



EXTERIOR
PRODUCT

CERTIFIED
PORCELAIN
TILE
0.05% or less water absorption



Mixed Sources
Product group from well-managed
forests and other controlled sources
www.fsc.org Cert no. SW-COC-001883
© 1996 Forest Stewardship Council



Printed using soy inks.

7834 C. F. Hawn Freeway | Dallas, TX 75217 | 214.398.1411 800.933.TILE
For more information about Daltile products and services, visit our website at daltile.com

©2011 Dal-Tile Corporation (3/11) SSDTMAGMA