

COLORBODY™ PORCELAIN
VIBE™



VIBE™

COLORBODY™ PORCELAIN



floor • wall • countertop

This Colorbody™ Porcelain is a very modern porcelain floor tile that is defined by its “Pin Dot” visual, textured surface, and two surface finishes; unpolished and light polished. A subtle veining characteristic adds to its dramatic and impressive visual.

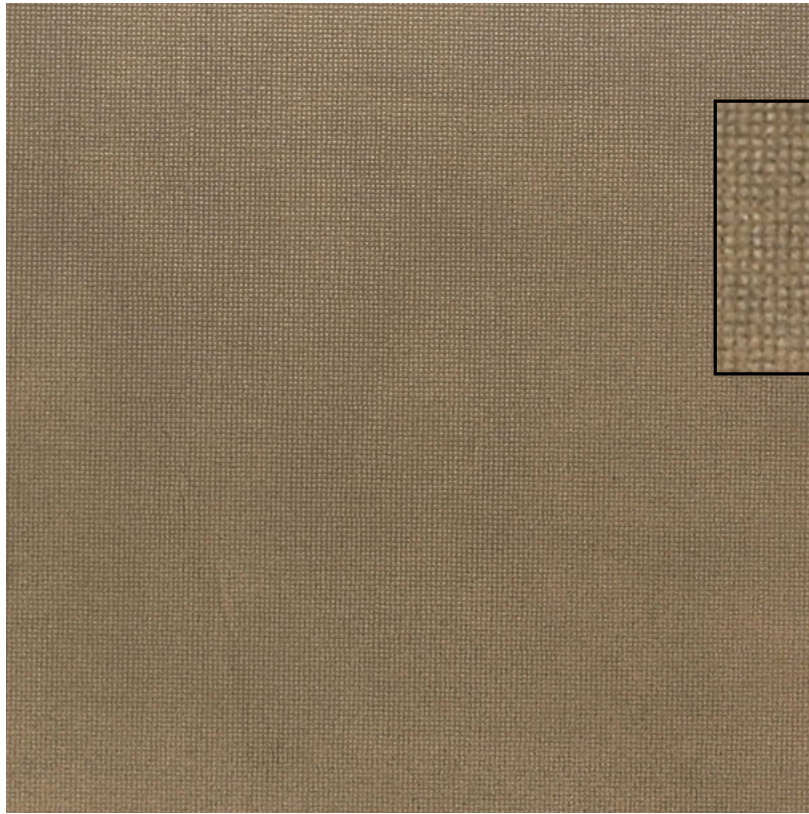
VIBE™

COLORBODY™ PORCELAIN

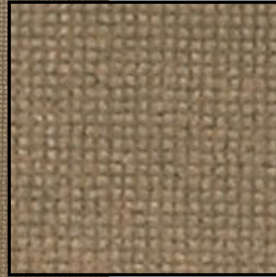


floor • wall • countertop

Field Tile



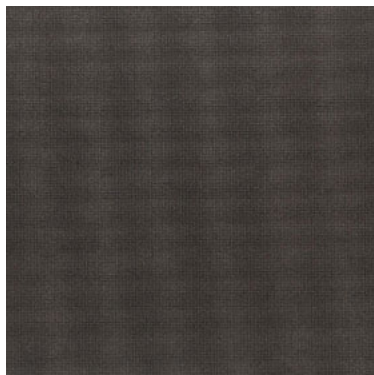
Close-up
of Field Tile



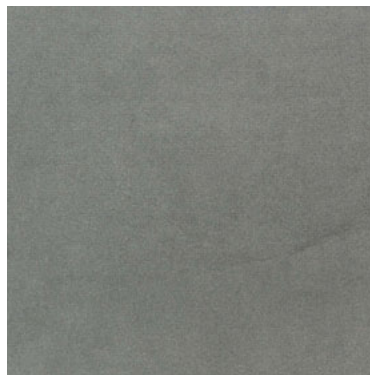
TECHNO BRONZE VI53



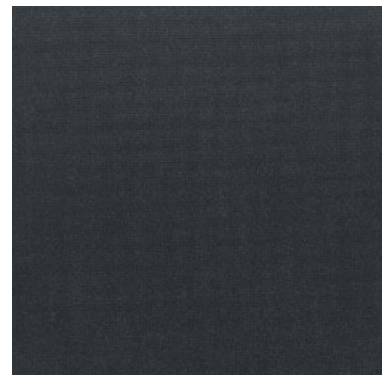
TECHNO BEIGE VI50



TECHNO BROWN VI54



TECHNO GRAY VI51



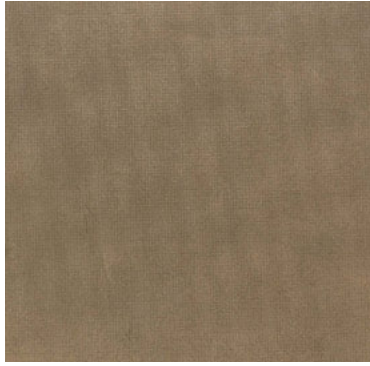
TECHNO BLACK VI55

CREATIVE IDEAS

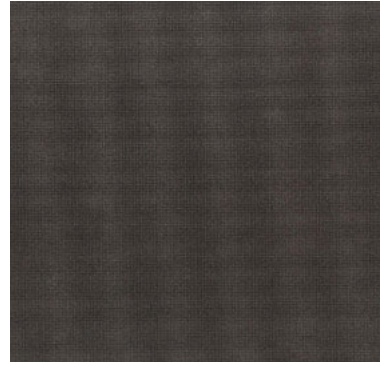
Color



TECHNO BEIGE VI50



TECHNO BRONZE VI53



TECHNO BROWN VI54

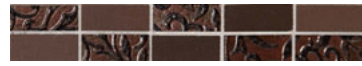
Accent



FASHION ACCENTS
CROSSROADS WHITE FA88
3 x 9 Decorative Accent

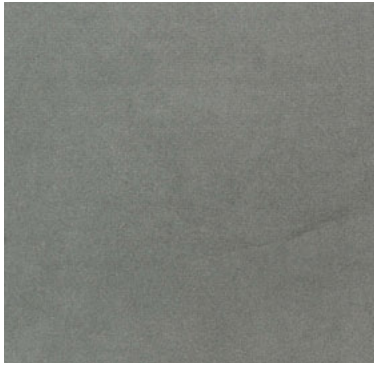


MASSALIA
BULLION MS91
1 x 6 Pinnacle Accent

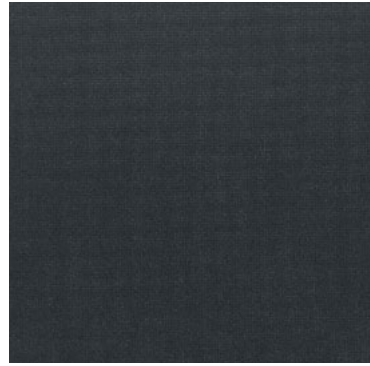


FASHION ACCENTS
ADORNMENT FA08
1 x 8 Decorative Accent

Color



TECHNO GRAY VI51



TECHNO BLACK VI55

Accent

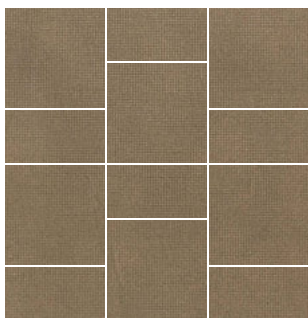


METAL AGES
POLISHED PEWTER MA11
4 x 12 Corbel Accent



URBAN METALS
GUNMETAL UM03
2 x 4 Straight-Joint

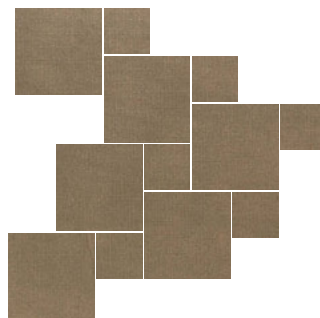
Pattern Ideas



ALTERNATING VERTICAL



STAGGERED VERTICAL BRICKWORK



HOPSCOTCH



DIAMOND



Photo features Glass Reflections in Honey Bee 1 x 6 liners with Urban Metals in Stainless Steel 4-1/4 x 4-1/4 field tile on the wall. Floor features Vibe in Techno Black (Unpolished) and Techno Gray (Unpolished) 18 x 18 field tile in a checkerboard pattern.



Photo features Techno Black 24 x 24 field tile.

SIZES

		SQ.FT. CARTON	PCS. PER CARTON
24 x 24 Field Tile	(23-1/2" x 23-1/2") (59.8 cm x 59.8 cm)	15.49	4
18 x 18 Field Tile	(17-5/8" x 17-5/8") (44.8 cm x 44.8 cm)	13.07	6
12 x 24 Field Tile	(11-3/4" x 23-1/2") (29.8 cm x 59.8 cm)	11.62	6
12 x 12 Field Tile	(11-3/4" x 11-3/4") (29.8 cm x 29.8 cm)	11.62	12

LINEAR OPTIONS™ SIZES

		SQ.FT. CARTON	PCS. PER CARTON
6 x 24 Field Tile	(6" x 23-1/2") (15.25 cm x 59.8 cm)	10.65	11
4 x 24 Field Tile	(4" x 23-1/2") (9.73 cm x 59.8 cm)	6.46	10
2 x 24 Field Tile	(2" x 23-1/2") (4.67 cm x 59.8 cm)	6.66	20

Additional linear and rectangular sizes available through Linear Options™, Daltile's linear cutting service. Visit www.daltile.com/LinearOptions for size and order information.

RESIDENTIAL USAGE

FLOORS	WALLS	COUNTERTOPS	EXTERIOR PATIOS	EXTERIOR POOL DECKS
F	W	C	EP*	

* Unpolished finish only

COMMERCIAL USAGE

	INTERIOR			EXTERIOR	
	RESIDENTIAL	LIGHT COMMERCIAL	COMMERCIAL	RESIDENTIAL	COMMERCIAL
Floors/Patios	✓	✓	✓*	✓*	
Walls/Backsplashes	✓	✓	✓	✓	✓
Countertops	✓	✓	✓	✓	✓
Pool Decking					
Pool Linings	✓	✓	✓	✓	✓

Suitable for exterior walls in freezing and non-freezing climates when proper installation methods are followed.

*Unpolished only.

NOTES

Manufacturer Warning: The Light Polished tiles have a dynamic coefficient of friction less than 0.42 as measured by the DCOF Acutest method. Tiles with DCOF Acutest values less than 0.42 are not recommended for use in areas with wet or slippery conditions. If such tiles are used as a walking surface where water, ice, oil, grease and/or other substances are present, such a condition could cause a reduction in foot traction and become unexpectedly slippery resulting in a fall or personal injury. See ANSI standard A137.1 section 6.2.2.1.10, available at www.tileusa.com/section6.2.2.1.10.html.

Water, oil, grease, etc. create slippery conditions. Floor applications with exposure to these conditions require extra caution in product selection. Not for use on ramps.

For proper bonding, medium bed mortar should be utilized in installing tiles with a dimensional length size greater than 20" x 20", large rectangles or tiles with greater dimensional thickness than normal. Back buttering tiles of this nature in the installation process will also assure proper coverage for bonding.

Use of a modified latex thin-set is recommended for installation.

Special consideration needs to be given when installing tiles 20" and larger. Please refer to www.daltile.com/LargeTiles for additional information.

Since there is shade variation in all natural products, the tile and trim supplied for your particular installation may not match these samples. Final selection should be made from actual tiles and trim and not from tile and trim samples or color reproductions. Manufactured in accordance with ANSI A137.1 standards.

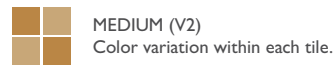
For additional information, refer to "Factors to Consider" at <http://daltile.com/factors-to-consider.cfm>.

TRIM

	TYPE	NUMBER	SIZE	PCS. PER CARTON
	Bullnose (Unpolished & Light Polished)	S-43C9	3 x 12	30
	Cove Base* (Unpolished)	S-36C9T	6 x 12	30
	Cove Base Corner (Unpolished)	SC-36C9T	1 x 6	15

* Cove Base trim is intended to coordinate with floor field tile in the standard 90-degree installation position.

SHADE VARIATION



INSTALLATION

THICKNESS	GROUT JOINT RECOMMENDATION
3/8"	1/8" (3/16" when rectangular sizes are used in a staggered brick-joint pattern, where the overlap does not exceed 33%)

DYNAMIC C.O.F. (WET) : 2

The higher the rating, the higher the slip resistance.

- < .42
- ≥ .42

DURABILITY : 4

Floor wear resistance

- Residential Bathrooms
- All Residential Areas
- All Residential / Light Commercial
- All Residential / Commercial

STATIC C.O.F. (WET) : 3

- < .50
- .50 - .59
- ≥ .60

TEST RESULTS

	ASTM#	UNPOLISHED RESULT	LIGHT POLISHED RESULT
Water Absorption	C373	< 0.5%	< 0.5%
Breaking Strength	C648	> 450 lbs	> 450 lbs
Scratch Hardness	MOHS	8.0	8.0
Chemical Resistance	C650	Resistant	Resistant
Dynamic C.O.F.	A137.1	Wet: ≥ 0.42	Wet: < 0.42
Static C.O.F.	C1028	Wet: ≥ 0.60 Dry: ≥ 0.70	Wet: ≥ 0.50 Dry: ≥ 0.60

Dynamic C.O.F. (Wet) value as measured by the DCOF AcuTest™ helps to assess a products suitability for a commercial environment. For more information, visit our website at www.daltile.com/DCOF.

VIBE™

COLORBODY™ PORCELAIN



floor • wall • countertop



daltile
greenworks
ENVIRONMENTAL LEADERSHIP THAT WORKS

By their very design, Daltile products can help make it easier for you to earn LEED™ points and/or points towards many industry leading green home building programs. From using recycled material content to establishing manufacturing facilities within 500 miles of your project, we help ensure you don't have to compromise your design to be environmentally conscious. For detailed information, visit daltilegreenworks.com.



PRE-CONSUMER
RECYCLED MATERIALS



LINEAR
OPTIONS



TRU-EDGE



7834 C. F. Hawn Freeway | Dallas, TX 75217 | 214.398.1411 | 800.933.TILE
For more information about Daltile products and services, visit our website at daltile.com

©2012 Dal-Tile Corporation (10/12) SSDTYVIBE12