

COLORBODY™ PORCELAIN
KIMONA SILK™



 **daltile**[®]
DESIGN WITH CONFIDENCE™

Professional
TILE SOLUTIONS

KIMONA SILK™

COLORBODY™ PORCELAIN

floor • wall • countertop

Field Tile



WHITE ORCHID P320



RICE PAPER P321



SPROUT P322



WATER CHESTNUT P323



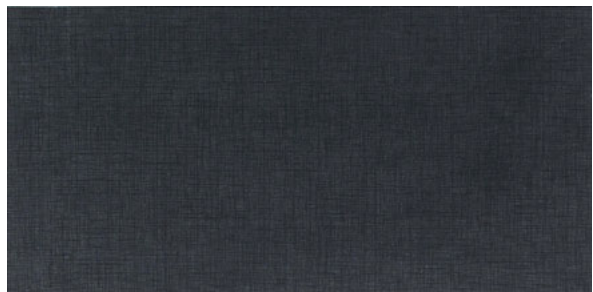
CHAI TEA P324



MORNING DOVE P325



IMPERIAL GRAY P326



PANDA BLACK P327





Cover photo features Kimona Silk in Water Chestnut 2 x 24 and 12 x 24 field tile.

CREATIVE IDEAS

Color

			
WHITE ORCHID P320	RICE PAPER P321	SPROUT P322	WATER CHESTNUT P323

Accent

			
FASHION ACCENTS CROSSROADS WHITE FA88 3 x 9 Decorative Accent	NATURAL STONE STONEGATE DA75 2 x 12 Decorative Accent	METAL AGES POLISHED BRONZE MA12 4 x 12 Ashlar Chair Rail	TUMBLED STONE COPPER BLEND DA79 2 x 12 Decorative Accent

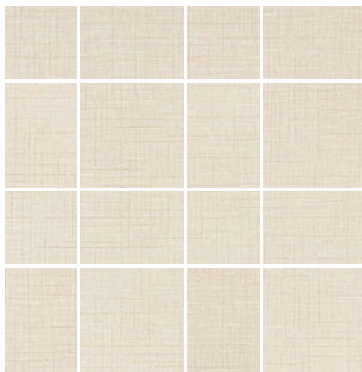
Color

			
CHAI TEA P324	MORNING DOVE P325	IMPERIAL GRAY P326	PANDA BLACK P327

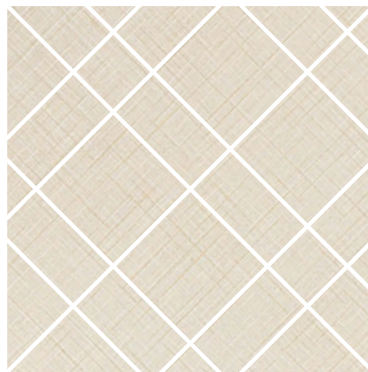
Accent

			
METAL AGES POLISHED BRONZE MA12 4 x 12 Corbel Accent Strip	METAL AGES POLISHED PEWTER MA11 4 x 12 Ashlar Chair Rail	METAL AGES POLISHED PEWTER MA11 4 x 12 Corbel Accent Strip	URBAN METALS GUNMETAL UM03 2 x 4 Straight-Joint

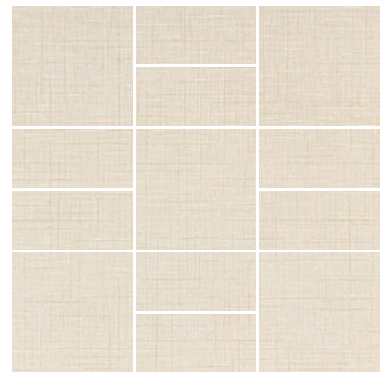
Pattern Ideas



BLOCK TRELLIS



DIAMOND CORRIDOR



CHECKERBOARD



Photo features Chai Tea 2 x 24 field tile on wall and 2 x 2 mosaic on the floor.

SIZES

		SQ.FT. CARTON	PCS. PER CARTON
24 x 24 Field Tile	(23-9/16 x 23-9/16) (59.8 cm x 59.8 cm)	15.49	4
12 x 24 Field Tile	(11-3/4 x 23-9/16) (29.8 cm x 59.8 cm)	15.49	8
12 x 12 Field Tile	(11-3/4 x 11-3/4) (29.8 cm x 29.8 cm)	10.65	11
2 x 24 Field Tile	(1-15/16 x 23-9/16) (4.9 cm x 59.8 cm)	10.00	30
2 x 2 Mosaic*	(11-3/4 x 11-3/4) (29.8 cm x 29.8 cm)	10.65	11

*Mesh-mounted on 12 x 12 sheets.

RESIDENTIAL USAGE

FLOORS	WALLS	COUNTERTOPS	EXTERIOR PATIOS	EXTERIOR POOL DECKS
F	W	C	EP	

Suitable for exterior walls in freezing and non-freezing climates when proper installation methods are followed.

COMMERCIAL USAGE

	INTERIOR			EXTERIOR	
	RESIDENTIAL	LIGHT COMMERCIAL	COMMERCIAL	RESIDENTIAL	COMMERCIAL
Floors/Patios	✓	✓	✓	✓	
Walls/Backsplashes	✓	✓	✓	✓	✓
Countertops	✓	✓	✓	✓	✓
Pool Decking	✓	✓	✓	✓	✓
Pool Linings	✓	✓	✓		

Suitable for exterior applications in non-freezing climates only when proper installation methods are followed.

NOTES

Since there are variations in all fired ceramic products, tile and trim supplied for your particular installation may not match these samples. Final color selection should be made from actual tiles and trim and not from tile samples or color reproductions. Manufactured in accordance with ANSI A137.1 standards.




Special care should be taken when grouting with dark pigmented colors. A grout release is recommended to prevent finely powdered pigments from lodging in the pores of the surface. Use of a latex modified thin-set is recommended for installation.

Special care needs to be given when installing tiles 20 and larger. Please refer to www.daltileproducts.com/LargeTiles for additional information.

Water, oil, grease, etc. create slippery conditions. Floor applications with exposure to these conditions require extra caution in product selection. Not for use on ramps.

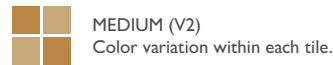
For additional information, refer to "Factors to Consider" at <http://daltile.com/factors-to-consider.cfm>.

TRIM

	TYPE	NUMBER	SIZE	PCS. PER CARTON
	Bullnose	S-43C9	3 x 12	33
	Cove Base*	S-36C9T	6 x 12	30
	Cove Corner	SC-36C9T	1 x 6	10

* Cove Base trim is intended to coordinate with floor field tile in the standard 90-degree installation position.

SHADE VARIATION



INSTALLATION

THICKNESS	GROUT JOINT RECOMMENDATION
3/8"	1/8" (3/16" when rectangular sizes are used in a staggered brick-joint pattern, where the overlap does not exceed 33%)

DYNAMIC C.O.F. (WET) : 2

The higher the rating, the higher the slip resistance.

1 < .42

2 ≥ .42

STATIC C.O.F. (WET) : 3

1 < .50

2 .50 - .59

3 ≥ .60

TEST RESULTS

	ASTM#	RESULT
Water Absorption	C373	< 0.5%
Breaking Strength	C648	> 450 lbs
Scratch Hardness	MOHS	8.0
Chemical Resistance	C650	Resistant
Dynamic C.O.F.	A137.1	≥ 0.42
Static C.O.F.	C1028	Wet: ≥ 0.60 Dry: ≥ 0.70

Dynamic C.O.F. (Wet) value as measured by the DCOF AcuTest™ helps to assess a products suitability for a commercial environment. For more information, visit our website at www.daltile.com/DCOF.

KIMONA SILK™

COLORBODY™ PORCELAIN

floor • wall • countertop



daltile
greenworks™
ENVIRONMENTAL LEADERSHIP THAT WORKS

By their very design, Daltile products can help make it easier for you to earn LEED™ points and/or points towards many industry leading green home building programs. From using recycled material content to establishing manufacturing facilities within 500 miles of your project, we help ensure you don't have to compromise your design to be environmentally conscious. For detailed information, visit daltilegreenworks.com.



PRE CONSUMER
RECYCLED MATERIALS



TRU-EDGE

CERTIFIED
PORCELAIN™
TILE
0.5% or less water absorption

Professional
TILE SOLUTIONS



7834 C. F. Hawn Freeway | Dallas, TX 75217 | 214.398.1411 800.933.TILE
For more information about Daltile products and services, visit our website at daltile.com

©2012 Dal-Tile Corporation (10/12) SSPTS/KIMON