

8134HIC / 8134HIC-EM / 8134HIC-D

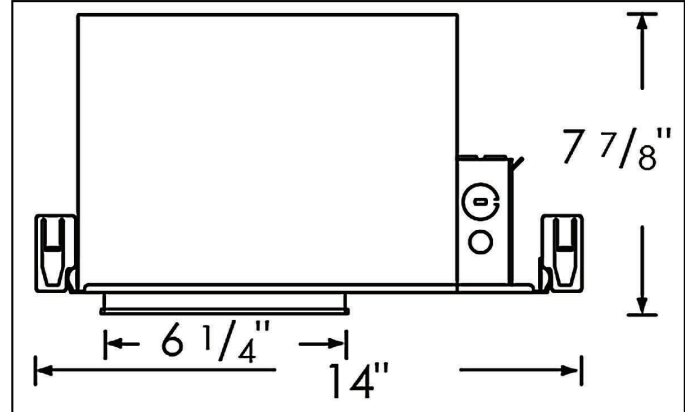
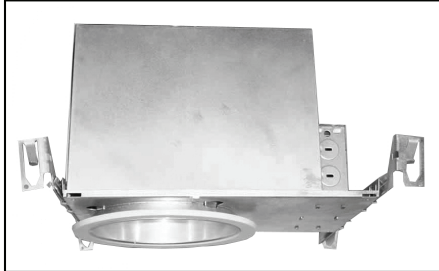
6" Horizontal IC Compact Fluorescent Housing



Royal Pacific Ltd.

4931 Paseo Del Norte NE
Albuquerque, NM 87113
Ph: 1-800-937-6925
Fax: 1-888-207-9509

DOUBLE WALL COMPACT FLUORESCENT HOUSING



GENERAL DESCRIPTION

Compact fluorescent housing with emergency backup and dimmable options.

MAIN FEATURES

Standards Conformance

- IC Rated for direct contact with insulation.
- Thermally protected against improper lamping.

Listing

- UL & cUL listed for damp location and feed through wiring.

Voltage

- Dual 120/277.

Lamps

- 2 x 13W
- 2 x 18W
- 2 x 26W

Ballast

- High power factor (HPF) electronic.
- For 4-pin type lamp.

Junction Box

- Listed for through-branch circuit wiring (4 in-4 out) and five 1/2" knockouts and four non-metallic cable knockouts with strain clamps.
- 3-port quick connectors pre-installed in J-box.

Bar Hangers

- Pre-installed bar hangers allow the housing to be positioned at any point within a 24" joist span.
- Bar hangers can be turned 90° on the plaster frame.
- Bar hangers are designed to fit T-bar spine without additional clamps for use in drop ceilings.
- Pre-installed captive nails on bar hangers.

Fit

- Adjusts to accommodate up to 1" ceiling thickness.
- 7 7/8" height allows use in 2" x 8" joist construction.

Alternate Configurations

- 8134HIC-EM includes a pre-installed emergency backup unit which provides 90 minutes of illumination when normal power source fails.
- 8134HIC-Dxx includes dimmable ballast.

Special Features

- Double wall construction.

Project:
Contact:
Location:
Fixture Type:

Quantity	Remarks