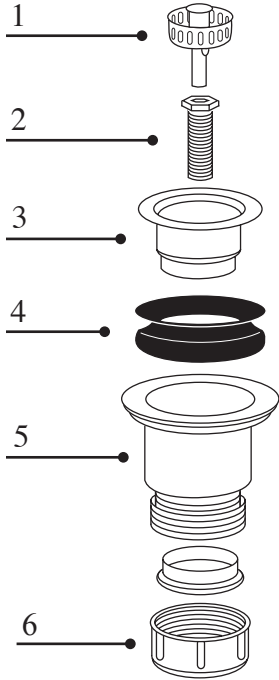




**INSTALLATION INSTRUCTIONS**  
2" JR. BASKET STRAINER, DR220



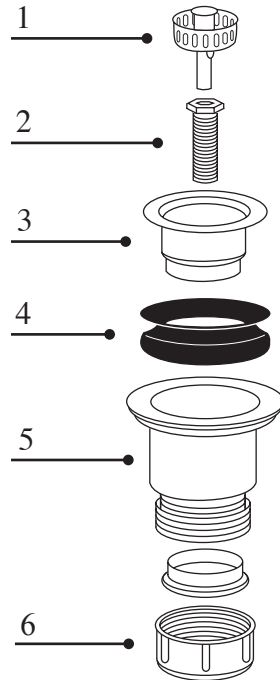
1. Apply a small bead of 100% Silicone (non-water based) to the side of strainer body flange (3).
2. Place strainer body (3) into sink.
3. Place rubber seal (4) on top of tailpiece (5).
4. Place tightening screw (2) into center of strainer body (3) and secure (hand tighten, plus 1/4 turn).
5. Lubricate (1) with liquid soap. Place strainer basket (1) into strainer body (3).
6. Attach drainpipe to BSP nut (6)

Remove all excess putty around the drain after the drain has been installed

WWW.NATIVETRAILS.NET



**INSTALLATION INSTRUCTIONS**  
2" JR. BASKET STRAINER, DR220



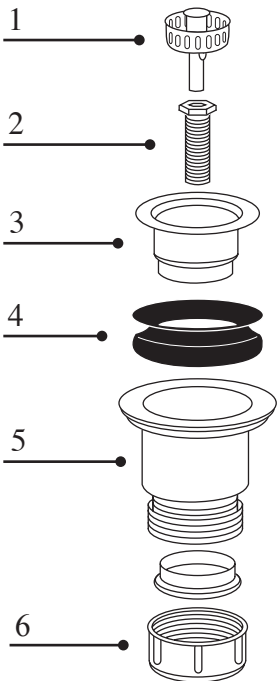
1. Apply a small bead of 100% Silicone (non-water based) to the side of strainer body flange (3).
2. Place strainer body (3) into sink.
3. Place rubber seal (4) on top of tailpiece (5).
4. Place tightening screw (2) into center of strainer body (3) and secure (hand tighten, plus 1/4 turn).
5. Lubricate (1) with liquid soap. Place strainer basket (1) into strainer body (3).
6. Attach drainpipe to BSP nut (6)

Remove all excess putty around the drain after the drain has been installed

WWW.NATIVETRAILS.NET



**INSTALLATION INSTRUCTIONS**  
2" JR. BASKET STRAINER, DR220



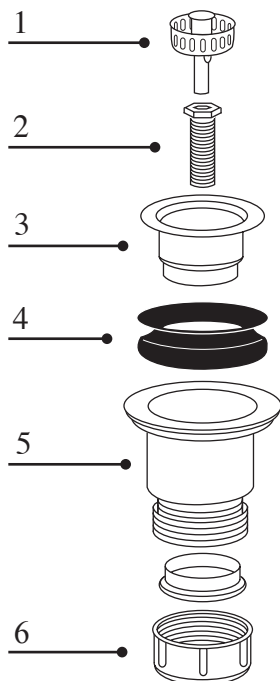
1. Apply a small bead of 100% Silicone (non-water based) to the side of strainer body flange (3).
2. Place strainer body (3) into sink.
3. Place rubber seal (4) on top of tailpiece (5).
4. Place tightening screw (2) into center of strainer body (3) and secure (hand tighten, plus 1/4 turn).
5. Lubricate (1) with liquid soap. Place strainer basket (1) into strainer body (3).
6. Attach drainpipe to BSP nut (6)

Remove all excess putty around the drain after the drain has been installed

WWW.NATIVETRAILS.NET



**INSTALLATION INSTRUCTIONS**  
2" JR. BASKET STRAINER, DR220



1. Apply a small bead of 100% Silicone (non-water based) to the side of strainer body flange (3).
2. Place strainer body (3) into sink.
3. Place rubber seal (4) on top of tailpiece (5).
4. Place tightening screw (2) into center of strainer body (3) and secure (hand tighten, plus 1/4 turn).
5. Lubricate (1) with liquid soap. Place strainer basket (1) into strainer body (3).
6. Attach drainpipe to BSP nut (6)

Remove all excess putty around the drain after the drain has been installed

WWW.NATIVETRAILS.NET