

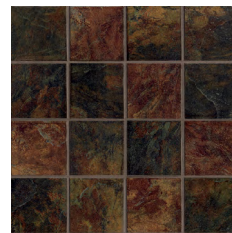
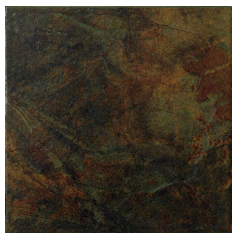
**MARAZZI**  USA

the fine art of ceramic tile

**(imperial slate)**

glazed ceramic tile

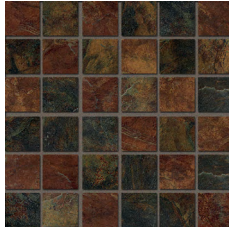
Made In The USA



Black



Black Mosaic - Square 2x2



Rust



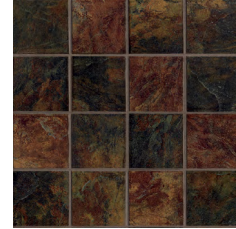
Tan



Tan Mosaic - Square 2x2



Mix



Contributes to LEED Credits **made in the USA**

**ASTM Test Results**

Technical Characteristics	ANSI Standards	ASTM Test Results	ASTM Test Methods
Water Absorption	3.0% - 7.0%	2.0% - 5.0%	C373
Frost Resistance	As Reported	Resistant	C1026
Scratch Resistance	MOHS 1-10	7	MOHS Scale
Breaking Strength	≥ 250 lbf.	≥ 370 lbf.	C648
Facial Dimension	-3.0% < Nominal ≤ 3.0%	Within Standard	C499
Nominal Thickness	≤ 0.04 in (1.02 mm max)	Within Standard	C499
Wedging (squareness)	+/- 0.50% or +/- 2.0 mm**	Within Standard	C502
Warpage (flatness)	+/- 0.75% or +/- 2.0 mm**	Within Standard	C485
Abrasion Resistance	Class 0 - Class V	Class IV	C1027
DCOF-Dynamic Coefficient of Friction (Wet Areas Only) <sup>†</sup>	As Reported	Minimum 0.42	DCOF AcuTest <sup>SM</sup> **
SCOF-Static Coefficient of Friction (Dry)	As Reported	0.70 ≤ S.C.O.F. < 0.80	C1028
SCOF-Static Coefficient of Friction (Wet)	As Reported	0.60 ≤ S.C.O.F. < 0.70	C1028
Chemical Resistance	Class A - Class E	Class A	C650
Stain Resistance	Class A - Class E	Class A	C1378

	MODULAR TILE	FLOOR TILE	DECO*	TRIMS**
Thickness	6"x6" (15x15 cm) 5/16" (8.5mm)	12"x12" (30x30 cm) 5/16" (8.5mm)	16"x16" (40x40 cm) 5/16" (9mm)	12"x12" (30x30 cm) Mosaic - Square 2x2
Names (colors)		UE24	UF4P	UH59
Black (black)		UE25	UF4Q	UH6A
Rust (rust)		UE26	UF4R	UH6B
Tan (tan)			ULBG	UH6B
Mix (black / rust)	UE3P		ULBH	

Notes: \* Imperial Mix color is a combination of the Black and Rust. Tile is randomly packaged and has extreme shade variation.  
\*\* Trim is available in all colors and made to complement Modular and Floor Tile.

<sup>†</sup> Dynamic Coefficient of Friction (DCOF) - Water, oil, grease or other fluids create slippery conditions. When installing floors in areas with exposure to these conditions, a minimum D.C.O.F. value of 0.42 is required. Additionally, extra caution is required with regards to product selection and proper maintenance. Visit [www.tcnatile.com](http://www.tcnatile.com) for complete information regarding the DCOF AcuTest test method and values.  
<sup>\*\*</sup> DCOF AcuTest is the industry designation for the test procedure contained in ANSI A137.1 Section 9.6, which has been extensively researched, allows for in-situ field measurements, and is in use at tile manufacturing facilities. It was so named to distinguish it from other DCOF measurements using different instruments and/or protocols.  
\*\*\* Whichever is less