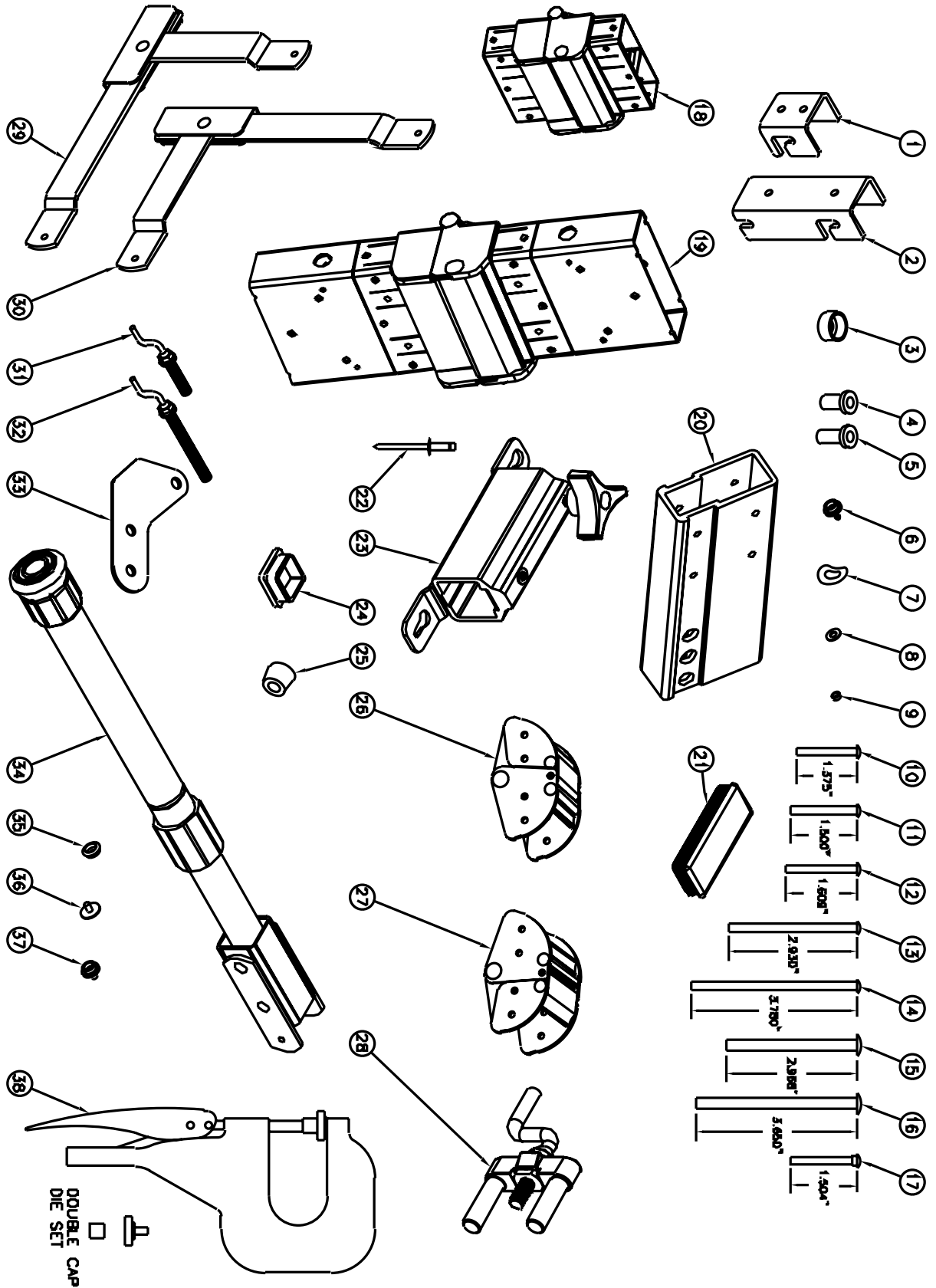




HEAVY DUTY FAST-FOLD® DELUXE REPLACEMENT PARTS

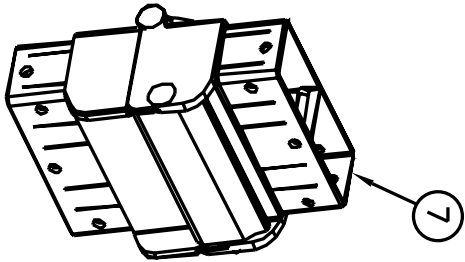


HEAVY DUTY FAST-FOLD® DELUXE REPLACEMENT PARTS

Diagram No.	Da-Lite Part No.	Description	Quantity Required	List Price Each
1	89179AN	Short hanger for wing arms	2	\$7.80
2	89178AN	Long hanger for valance bar, wing bar and skirt bar sliders	2	12.80
3	90982	Rivnut spacer - used between frame and leg assy.	8-20	0.66
4	78454	Rivnut, short steel 5/16 - 18 - used on leg assy.	4	2.20
5	47473	Rivnut, steel 5/16 - 18 long - used to screw speedy cranks to frames	varies	2.80
6	47441	Snap stud - mounts to frame to snap fabric onto frame	varies	0.60
7	44829	Washer, spring .563OD x .195ID x .008T - Used on leg brace assembly and corner brace assembly	3	0.24
8	47351	Washer, flat .437OD x .203ID x .031T - used to attach foot to frame	2-6	0.24
9	93448	spacer - used as shoulder for #14 rivet	4	1.56
10	44830	Rivet, .187 x 1.375" long - used to mount hinge/latch assy. to frame	varies	0.26
11	88801	Rivet, .187 x 1.500" long - used to attach the foot to frame	2-6	0.72
12	88802	Rivet, .186 x 1.609" long - used to attach rubber foot and latches to leg assy.	8	0.38
13	91777	Rivet, .184 x 2.93" long - used to mount the latch assy. to leg assy.	12	0.92
14	33431	Rivet, .186 x 3.78" long - used to attach the skirt bar slider to the frame (used with #9)	4	1.42
15	91949	Rivet, .250 x 2.968 long - used to attach hinge/latch assy. to leg assy.	2-5	1.30
16	33143	Rivet, .250 x 3.650 long - used to attach blue latch on hinge/latch assy.	12	1.42
17	88901	Rivet, shoulder .238 x 1.504" long - mounts to frame to hook Dressup hardware	6	0.48
18	37317	Hinge/latch assy. casting - used on the frame	2-8	48.80
19	37318	Hinge/latch assy. extension casting - used on frame of 13' x 17' and over	6/8	69.40
20	35132	Corner connecting tube - used on the frame	4	24.60
21	33147	Plastic plug, 1.25" x 3.50"	4	0.78
22	48570	Pop rivet - used to mount hinge/latch assy. casting to the frame	4	0.32
23	93579	Skirt bar slider for adjustable skirt bar only	2	39.80
24	88599	Plastic plug, 1.25" square	8	0.54
25	47353	Rubber foot - used on leg assy. and dress up kit hardware	6	0.48
26	99148	Left latch assy. - used on leg assy.	2-5	15.60
27	99150	Right latch assy. - used on leg assy.	2-5	15.60
28	94679	Corner lock assy. - used on frames	4	20.00
29	58659	Right corner brace assembly - used on leg assy.	2	15.20
30	58660	Left corner brace assembly - used on leg assy.	2	15.20
31	89196	Speedy crank, 2.96"	1	5.50
32	93488	Long speedy crank, 3.75"	varies	5.50
33	91029PL	Corner hinge plate - used on leg assy.	4	0.72
34	89704	Skirt bar steadyrest assembly for 10' or wider skirt with skirt bar	1	46.00
	89705	Skirt bar steadyrest assembly for extra long skirt with skirt bar	1	46.00
35	47489	Light socket - used for all fabric snaps except corners	varies	0.36
	47490	Heavy socket - used for dress up kits and corners, black	varies	0.36
36	47491	Black cap - used on three sides of fabrics and dress up kits	varies	0.36
37	47492	Double cap - used at the bottom of all fabrics	varies	0.36
38	76781	Snap tool - used to replace both types of snaps	1	294.00



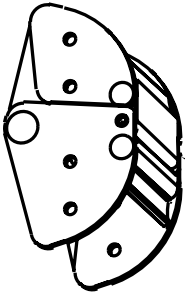
HEAVY DUTY FAST-FOLD® DELUXE FRAME REPAIR KIT



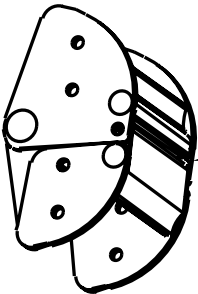
7



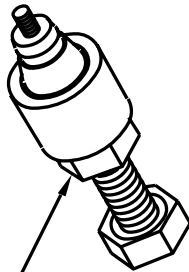
8



9



10



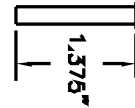
11



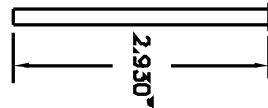
1



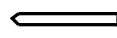
2



3



4



5



6

HEAVY DUTY FAST-FOLD® DELUXE FRAME REPAIR KIT

Diagram No.	Da-Lite Part No.	Description	Quantity Required	List Price Each
1	47473	Rivnut, steel 5/16 - 18 long - used to screw speedy cranks to frames	10	\$2.80
2	47441	Snap stud - mounts to frame to snap fabric onto frame	20	0.60
3	44830	Rivet, .187 x 1.375" long - used to mount hinge/latch assy. to frame	20	0.26
4	91777	Rivet, .184 x 2.93" long - used to mount the latch assy. to the legs	16	0.92
5	48570	Pop rivet - used to mount hinge/latch assy. casting to the frame	8	0.32
6	88806	Spring - used in latch assy., beneath the blue latch	20	0.72
7	37317	Hinge/latch assy. casting - used on the frame	2	48.80
8	47206	Rivet setting tool	1	90.00
9	99148	Left latch assy., used on legs	2	15.60
10	99150	Right latch assy., used on legs	2	15.60
11	47207	Rivnut tool	1	188.00
For complete HD Deluxe repair kit, order as follows: (includes #1-11)				
	36974	Fast-Fold HD Deluxe Repair Kit	1	476.00