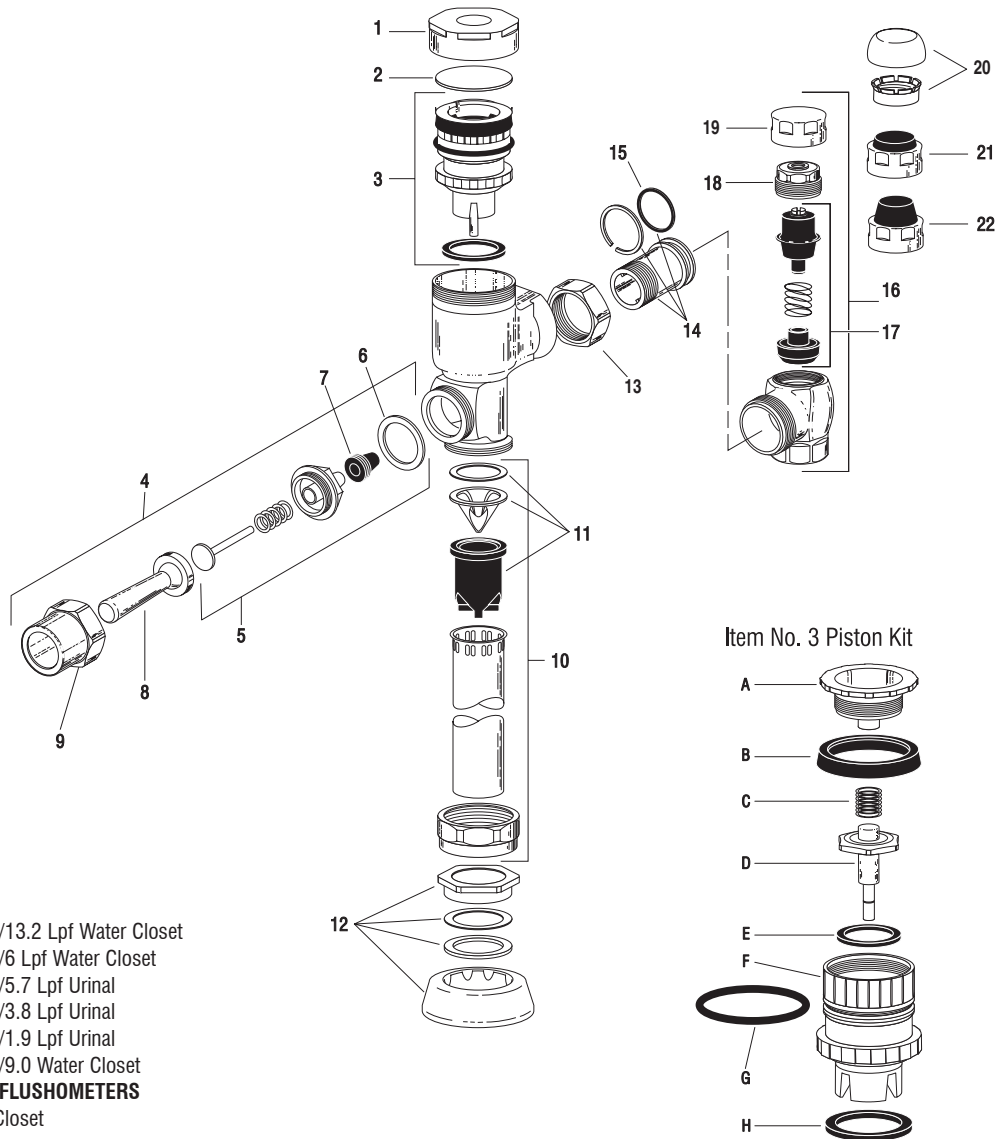
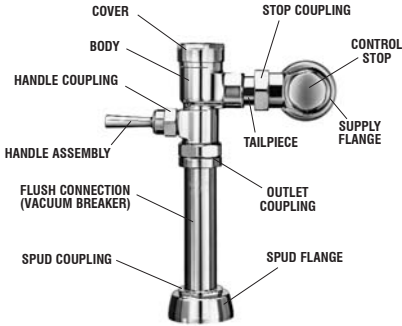


# SLOAN® FLUSHOMETERS

## GEM•2® Flushometer Maintenance Guide



### PARTS LIST

- |  |         |          |   |
|--|---------|----------|---|
| 1.   | 0307142 | G-105    | CP Cover                                    |
| 2.   | 0307139 | G-106    | Slip Disc                                   |
| 3.   | 0307193 | G-1007-A | Piston Kit - 3.5 gpf/13.2 Lpf Water Closet  |
|  | 0307195 | G-1016-A | Piston Kit - 1.6 gpf/6 Lpf Water Closet     |
|  | 0307192 | G-1009-A | Piston Kit - 1.5 gpf/5.7 Lpf Urinal         |
|  | 0307185 | G-1017-A | Piston Kit - 1.0 gpf/3.8 Lpf Urinal         |
|  | 3307133 | G-1018-A | Piston Kit - 0.5 gpf/1.9 Lpf Urinal         |
|  | 3307134 | G-1019-A | Piston Kit - 2.4 gpf/9.0 Water Closet       |
| <b>PISTON KITS FOR OLD STYLE ADJUSTABLE GEM FLUSHOMETERS</b> |         |          |   |
|  | 0307043 | G-1003-A | Piston Kit - Water Closet                   |
|  | 0307044 | G-1002-A | Piston Kit - Urinal                         |
| <b>ALL PISTON KITS INCLUDE G-21 MAIN SEAT (item H)</b>       |         |          |   |
| 4.   | 5307070 | G-36-A   | Handle Assembly - 6 per pkg.                |
| 5.   | 5307074 | G-50-A   | Handle Repair Kit - 6 per pkg.              |
| 6.   | 5307065 | G-35     | Handle Gasket - 48 per pkg.                 |
| 7.   | 5302297 | B-39     | Handle Seal - 12 per pkg.                   |
| 8.   | 0307067 | G-36     | Handle Grip                                 |
| 9.   | 0307062 | G-28     | Handle Socket                               |
| 10.  | 5323005 | V-500-AA | 3/4" x 9" Vacuum Breaker - 6 per pkg.       |
|  | 5323006 | V-500-AA | 1-1/4" x 9" Vacuum Breaker - 6 per pkg.     |
|  | 5323007 | V-500-AA | 1-1/2" x 9" Vacuum Breaker - 6 per pkg.     |
| 11.  | 3323192 | V-551-A  | Vacuum Breaker Repair Kit                   |
| 12.  | 0306125 | F-5-A    | 3/4" Spud Coupling                          |
|  | 0306140 | F-5-A    | 1-1/4" Spud Coupling                        |
|  | 0306146 | F-5-A    | 1-1/2" Spud Coupling                        |
| 13.  | 0308676 | H-550    | Stop Coupling                               |
| 14.  | 0308801 | H-551-A  | Adjustable Tailpiece 2-1/16"                |
| 15.  | 5308696 | H-553    | O-ring - 24 per pkg.                        |
| 16.  | 0388022 | H-710-A  | 1" Screwdriver Bak-Chek® Stop CP - complete |
|  | 0388025 | H-710-A  | 3/4" Screwdriver Bak-Chek® Stop - complete  |
| 17.  | 3308853 | H-541-A  | Control Stop Repair Kit*                    |
|  | 3308856 | H-543-A  | Control Stop Repair Kit**                   |
| 18.  | 0308612 | H-622    | CP Bonnet*                                  |
|  | 0308843 | H-577    | CP Bonnet**                                 |
| 19.  | 0308840 | H-573    | Control Stop Cap CP*                        |
|  | 0308848 | H-582    | Control Stop Cap CP**                       |

- |     |         |          |  |
|-----|---------|----------|--|
| 20. | 3308791 | H-1010-A | Vandal Resistant Control Stop Cap Assem.*  |
|     | 3308790 | H-1009-A | Vandal Resistant Control Stop Cap Assem.** |
| 21. | 3308866 | H-574    | Control Stop Cap w/Bumper*                 |
| 22. | 3308867 | H-576    | Control Stop Cap w/Extended Bumper*        |

\* for use w/H-700-A 1" & 3/4" and H-600-A 1" Screwdriver Bak-Chek® Control Stops  
 \*\* for use w/H-600-A 3/4" Screwdriver Bak-Chek® Control Stops

PISTON COMPONENTS (*** indicates component is NOT available separately)			
LETTER	CODE NO.	PART NO.	DESCRIPTION
A	***	***	Piston Cover
B	5307106	G-78	Molded Cup - 12 per pkg.
C	0307130	G-102	Spring
D	***	***	Relief Valve
E	0307116	G-95	Relief Valve Seat
F	***	***	Piston Body
G	0307210	G-85	Filter O-ring
H	5307052	G-21	Main Seat - 6 per pkg.

REPAIR KIT		
CODE NO.	PART NO.	DESCRIPTION
3307128	G-1011	Repair Kit includes items: 2, 6, 7, B, C, E, G & H

For old style adjustable GEM Flushometers use Kit: 5307047 G-1005-A  
 The information contained in this document is subject to change without notice.

**SLOAN VALVE COMPANY • 10500 SEYMOUR AVENUE • FRANKLIN PARK, IL 60131**

Phone: 1-800-9-VALVE-9 or 1-847-671-4300 • Fax: 1-800-447-8329 or 1-847-671-4380 • <http://www.sloanvalve.com>

# Troubleshooting and Maintaining the Sloan GEM•2® Flushometer

**1. PROBLEM: Valve does not function.**

- CAUSE:** (a.) Control Stop or Main Valve is Closed.  
 (b.) Handle Assembly is worn.  
 (c.) Relief Valve is worn and sticking in UP position.

- SOLUTION:** (a.) Open Control Stop or Main Valve.  
 (b.) Install Sloan Handle Repair Kit (G-50-A) or replace Handle.  
 (c.) Replace Piston.

**2. PROBLEM: Insufficient volume of water to adequately siphon fixture.**

- CAUSE:** (a.) Control Stop not open enough.  
 (b.) Urinal Piston Parts inside a Closet Valve.  
 (c.) Low Consumption Valve installed on a non-Low Consumption fixture.  
 (d.) Inadequate volume or pressure at supply.

- SOLUTION:** (a.) Adjust Control Stop for desired delivery of water.  
 (b.) Replace Piston Parts with proper Closet Piston.  
 (c.) Replace with proper Piston Kit.  
 (d.) Increase water pressure or supply (flow) to valve. Consult Factory for assistance.

**3. PROBLEM: Length of flush too short (Short Flushing) or Valve closes off immediately.**

- CAUSE:** (a.) Piston Assembly is not hand-tight.  
 (b.) Enlarged By-Pass orifice from corrosion or damage.  
 (c.) Urinal Piston in Closet Flushometer.  
 (d.) Low Consumption Piston installed in non-Low Consumption fixture.  
 (e.) Handle Assembly worn.

- SOLUTION:** (a.) Screw the assembly hand-tight.  
 (b.) Install NEW Inside Parts Kit to correct problem and update Flushometer.  
 (c.) Replace Piston with proper Closet Piston.  
 (d.) Replace with proper Piston Kit.  
 (e.) Install Handle Repair Kit (G-50-A).

**4. PROBLEM: Length of flush too long (Long Flushing) or fails to close off.**

- CAUSE:** (a.) Piston is not seating properly or By-pass orifice is clogged because of foreign material, or By-pass orifice is clogged by an invisible gelatinous film from "over-treated" water.

- (b.) Line pressure has dropped and is not sufficient to force Relief Valve to seat.  
 (c.) 3.5 GPF Closet Piston has been used in a 1 or 1.5 GPF Urinal or on a 1.6 GPF toilet.  
 (d.) G-21 Main Seat is fouled with debris or is worn.

- SOLUTION:** (a.) Disassemble the working parts and wash thoroughly. NOTE: Size of the orifice in the By-pass is of utmost importance for the proper metering of water into the upper chamber of the valve. DO NOT enlarge or damage this orifice. Replace Piston if cleaning does not correct problem. Shut off all control stops until pressure has been restored, then open them again.  
 (b.) Replace with proper Piston  
 (c.) Clean or replace G-21 Main Seat.

**5. PROBLEM: Leaking at Handle Assembly.**

- CAUSE:** (a.) The B-39 Seal may have deteriorated.  
 (b.) Handle Gasket has been omitted,  
 (c.) Valve Handle Bushing is worn.

- SOLUTION:** (a.) Install new B-39 Seal. NOTE: The B-39 Seal will easily slide right onto the Bushing if it is wet.  
 (b.) Install G-35 Handle Gasket or Sloan Handle Repair Kit (G-50-A).  
 (c.) Install Sloan Handle Repair Kit (G-50-A).

**CARE AND CLEANING INSTRUCTIONS**

DO NOT use abrasive or chemical cleaners to clean Flushometers as they may dull the luster and attack the chrome or special decorative finishes. Use ONLY soap and water, then wipe dry with clean cloth or towel.

While cleaning the bathroom tile, the Flushometer should be protected from any splattering of cleaner. Acids and cleaning fluids can discolor or remove chrome plating.

If further assistance is required, please contact the Sloan Valve Company Installation Engineering Dept. at 1-888-SLOAN-14.

Piston Identification Chart	Water Closet	Water Closet	Urinal	Urinal	Urinal	Water Closet	Urinal	Water Closet
	G-1007-A	G-1016-A	G-1009-A	G-1017-A	G-1018-A	G-1019-A	G-1002-A	G-1003-A
	3.5 gpf (13.2 Lpf)	1.6 gpf (6.0 Lpf)	1.5 gpf (5.7 Lpf)	1.0 gpf (3.8 Lpf)	0.5 gpf (1.8 Lpf)	2.4 gpf (9.0 Lpf)	For Old Style Adjustable Gem Valves	
Piston Color	Gray	Black	Black	Black	Black	Gray	Black	Black
Barrel	Slotted	Slotted	Solid	Solid	Solid	Slotted	Solid	Slotted
Grooves	2	0	2	1	3	0	0	0
Old Piston Number	G-111-A & G-112-A	-	G-101-A	-	-	-	G-75-AU	G-75-AC

**SLOAN VALVE COMPANY • 10500 SEYMOUR AVENUE • FRANKLIN PARK, IL 60131**

Phone: 1-800-9-VALVE-9 or 1-847-671-4300 • Fax: 1-800-447-8329 or 1-847-671-4380 • <http://www.sloanvalve.com>