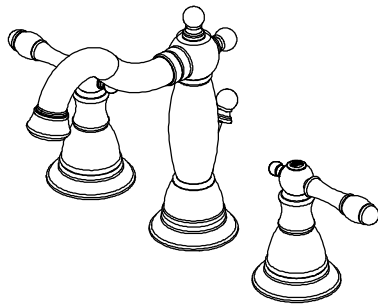


Premier®

Brand Lavatory Faucets



Model Number: 120341LF&120342LF

INSTALLATION

Tools:

Adjustable wrench



Pipe tape



Pipe wrench



Groove joint pliers



Basin wrench



screwdriver



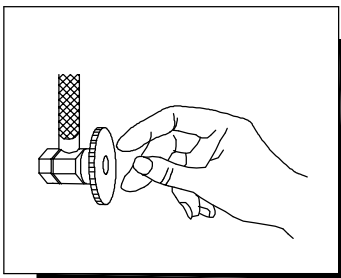
Plumber's putty



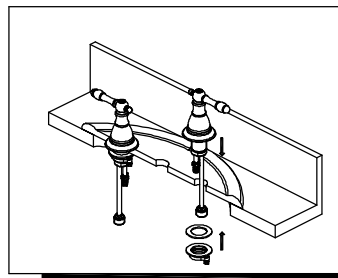
Cleaning:

To maintain and protect the fine luster of all products. Clean with a soft damp cloth only. DO NOT USE detergents or cleanser as they may harm the protective finish.

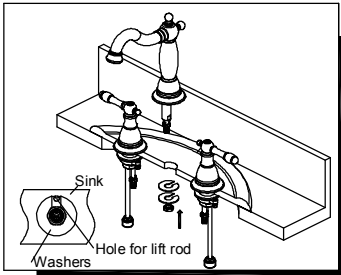
INSTALLATION STEPS: Two handles lavatory faucet



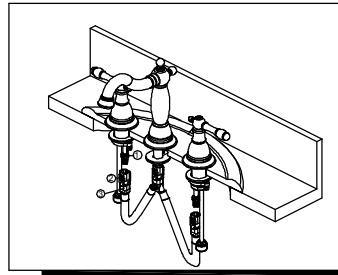
1. Shut off water supply at angle stop. Remove old faucet. Clean sink surface in preparation for new faucet.



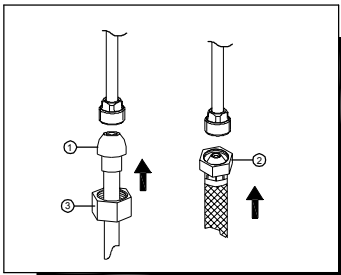
2. Slide hot and cold end valves through sink mounting holes. Make sure long tubes are installed away from spout. **Note: Hot side end valve is labeled.** Secure end valves with washers and nuts. Hand tighten nuts onto shank. Lock nuts into position by tightening screws.



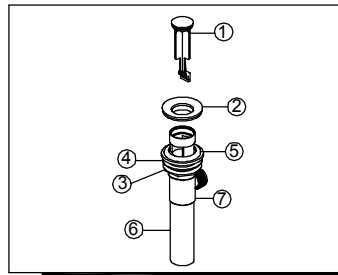
3. Place spout assembly through mounting hole in sink. Secure spout with rubber washer, metal washer and nut.



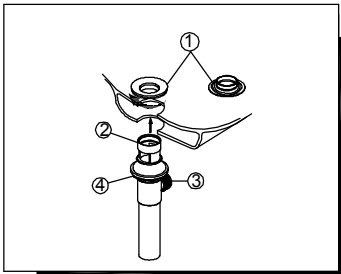
4. Align tabs (1) and tabs (2) on quick connects (3). Push quick connects firmly upward and snap onto receiving tube tab (1). Pull down moderately to ensure each connection has been made.



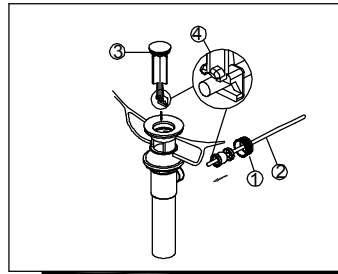
5. Make Connections to water lines: Choose hook-ups for 1/2" I.P.S. connections: (1) Ball nose riser (3/8" O.D. copper tubing), or (2) 1/2" I.P.S. faucet connector. Use coupling nuts (3) with the ball nose risers (1). Use wrenches when tightening. Do not overtighten.



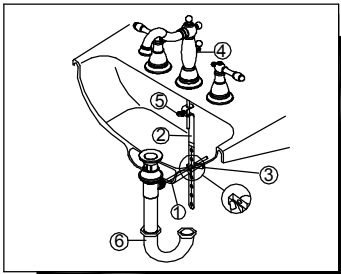
6. Remove stopper (1) and flange (2). Screw nut (3) all the way down. Push washer (4) and gasket (5) down. Remove tailpiece (6) from body (7), add Teflon® tape, replace tailpiece.



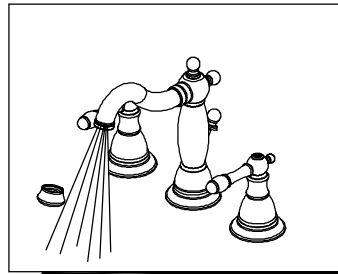
7. Apply a small bead of Plumber's putty to underside of flange (1). Insert body (2) into sink. Screw flange (1) into body (2). Pivot (3) must face faucet. Pull assembly down firmly and hold in place. DO NOT TWIST. Tighten nut, washer & gasket (4), clean off excess Plumber's putty.



8. Remove pivot nut (1). Install horizontal rod (2) and stopper (3) as removable (4). Hand tighten pivot nut (1).

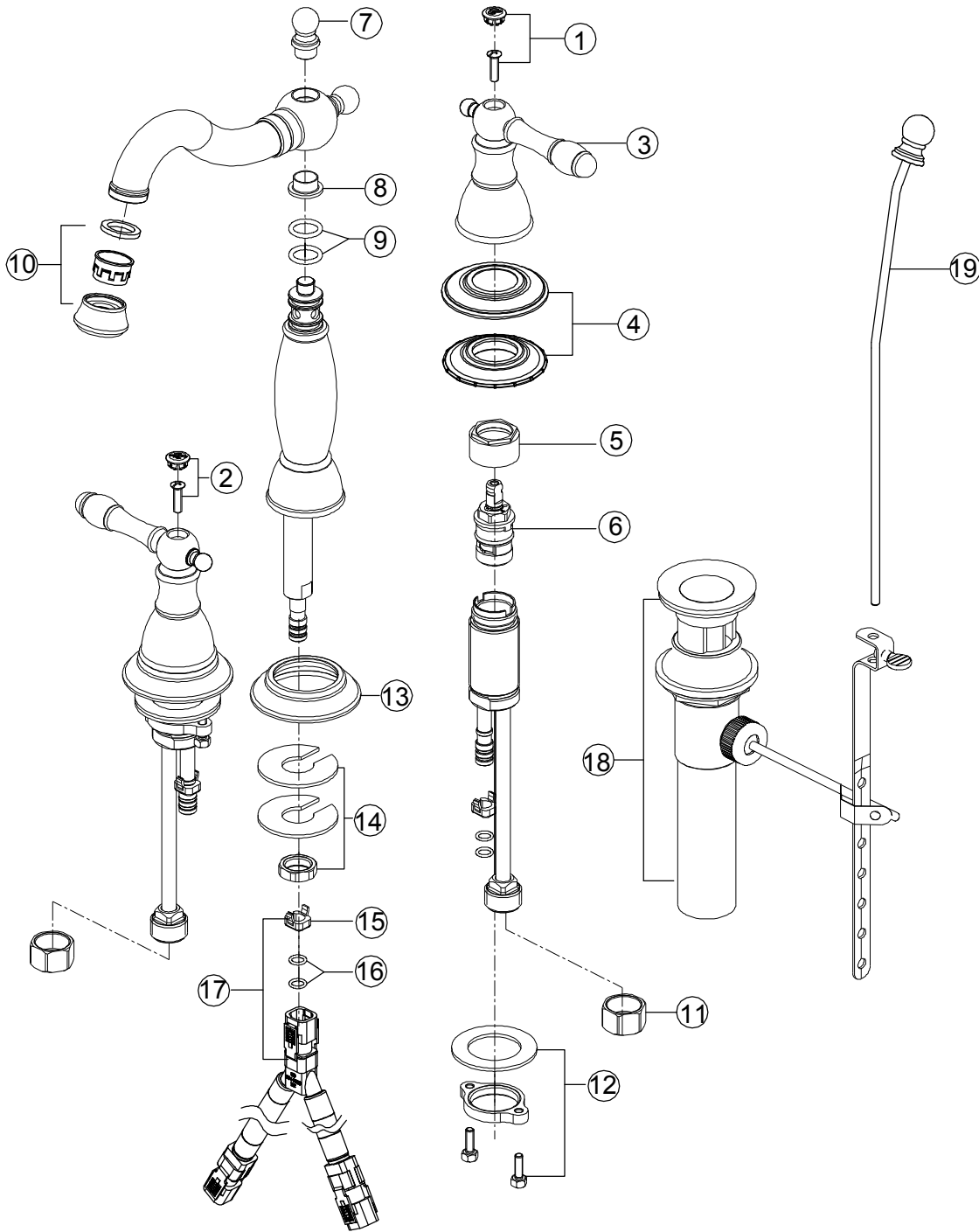


9. Attach horizontal rod (1) to strap (2) using clip (3). Insert lift rod (4) into strap and tighten screw (5). Connect assembly to drain (6).



10. Important: After installation is completed, remove aerator. Turn on water supply and allow both hot and cold water to run for at least one minute each. While water is running, check for leaks. Replace aerator.

Parts List



MODEL NO. 120341LF			
NO.	PART DESCRIPTION	PART NO.	QTY.
1	Handle Screw & Screw Cap (C)	33	1
2	Handle Screw & Screw Cap (H)	34	1
3	Handle Assembly	167	1
4	Flanges & Seats	119	1
5	Bonnet Nuts	41	1
6	Cartridge(H)	3	1
6	Cartridge(C)	4	1
7	Cap	43	1
8	Washer	44	1
9	O-rings	45	2
10	Aerator	168	1
11	Coupling Nuts	4CP308	2
12	Mounting Kits	122	1
13	Spout Seat	123	1
14	Mounting Kit	169	1
15	Block	129	1
16	O-Rings	130	2
17	Hose Assembly	131	1
18	Brass Pop-Up	124020	1
19	Lift Rod&Lift Knob	47	1

MODEL NO. 120342LF			
NO.	PART DESCRIPTION	PART NO.	QTY.
1	Handle Screw & Screw Cap (C)	35	1
2	Handle Screw & Screw Cap (H)	36	1
3	Handle Assembly	171	1
4	Flanges & Seats	172	1
5	Bonnet Nuts	41	1
6	Cartridge(H)	3	1
6	Cartridge(C)	4	1
7	Cap	50	1
8	Washer	44	1
9	O-rings	45	2
10	Aerator	170	1
11	Coupling Nuts	4CP308	2
12	Mounting Kits	122	1
13	Spout Seat	124	1
14	Mounting Kit	169	1
15	Block	129	1
16	O-Rings	130	2
17	Hose Assembly	131	1
18	Brass Pop-Up	124011	1
19	Lift Rod&Lift Knob	51	1