

models NA400S  
400C/L/S/U  
M400C/L/U  
T400C/L/U

Save  
up to  
**50%**  
on heating costs

# wall-mounted ceramic convection heater

## PLEASE READ AND SAVE THESE USE AND CARE INSTRUCTIONS

1. Rooms that have less optimal conditions as described under "Selecting a Proper Location" on page 2, may be less effective.
2. For maximum efficiency, the heater should be mounted between approximately 6 and 18 inches from the floor or baseboard.
3. The factory installed power cord is for use in 120 Volt AC outlets only.
4. The ON/OFF switch will illuminate red when in the ON position.
5. ECO-heaters are designed to be left on for extended periods of time without damage. If not to be used for an extended period, unplug the power cord and store appropriately.
6. ECO-heaters may be cleaned if necessary, see "CLEANING AND STORAGE" on page 3.
7. The ceramic model of this heater (C400/NA400/T400) can be painted to match any decor with acrylic latex paint. **(Do not use oil-based paints.)** The metal model (M400) cannot be painted.

## IMPORTANT SAFETY INSTRUCTIONS

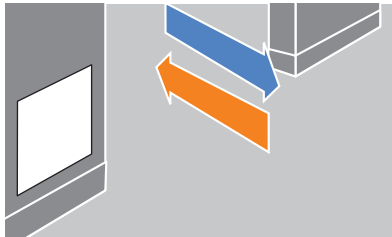
When using electrical appliances, basic precautions should always be followed to reduce the risk of fire, electric shock, and injury to persons, including the following:

1. Read all instructions before using this heater.
2. Extreme caution: This appliance is not intended for use by persons (including children) with reduced physical, sensory or mental capabilities, or lack of experience & knowledge, unless they have been given supervision or instruction concerning use of the appliance by a person responsible for their safety. Children should be supervised to ensure that they do not play with the appliance.
3. This heater is hot when in use. To avoid burns, do not let bare skin touch hot surfaces. Keep combustible materials, such as furniture, pillows, bedding, papers, clothes, and curtains at least 3 feet (0.9m) from the front of the heater and keep them away from the sides and rear.
4. Always unplug heater when not in use.
5. Do not operate the heater with a damaged cord or plug or after the heater malfunctions, has been dropped or damaged in any manner.
6. Indoor use only, wall mounted use only.
7. This heater is not intended for use in bathrooms, laundry areas and similar indoor locations. Never locate heater where it may fall into bathtub or other water container. **NEVER PLACE THE HEATER IN A LOCATION WHERE SOMEONE COULD OPERATE IT WHILE STANDING IN WATER.**
8. Do not run cord under material. Do not cover cord with throw rugs, runners, or similar coverings.
9. To prevent a possible fire, do not block the space between the heater and the wall which is for air intake or exhaust in any manner.
10. A heater has hot and arcing or sparking parts inside. Do not use it in the areas where gasoline, paint, or flammable liquids are used or stored.
11. Use this heater only as described in this manual. Any other use not recommended by the manufacturer may cause fire, electric shock, or injury to persons.
12. Avoid the use of an extension cord because the extension cord may overheat and cause a risk of fire. However, if you have to use an extension cord, the cord should be rated not less than 500 watts.
13. To prevent overloading a circuit, do not plug the heater into a circuit that already has other appliances working. Do not install the heater under the wall socket.
14. It is normal for the plug to feel warm to the touch; however, a loose fit between the AC outlet (receptacle) and plug may cause overheating and distortion of the plug. Contact a qualified electrician to replace a loose or worn outlet.
15. The output of this heater may vary and its temperature may become intense enough to burn exposed skin. Use of this heater is not recommended for persons with reduced sensitivity to heat or an inability to react to avoid burns.
16. **WARNING:** In order to avoid overheating, do not cover the heater.

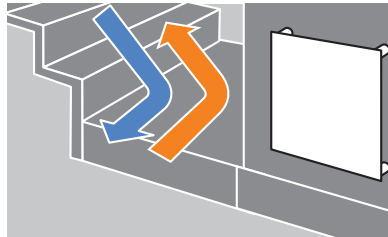
### 17. "SAVE THESE INSTRUCTIONS"

## SELECTING A PROPER LOCATION

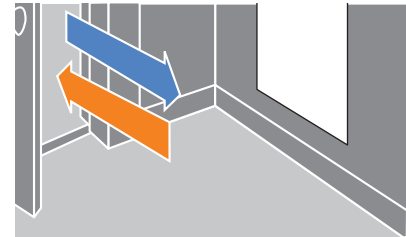
These room features can affect the efficiency of your ECO-heater:



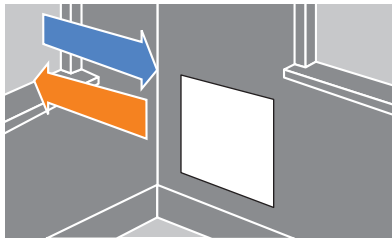
A floor plan that has open access to other rooms.



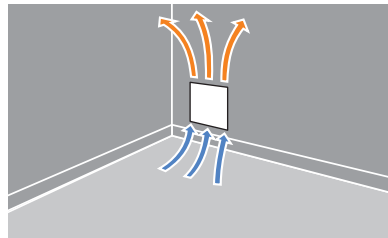
Heater placed near a stairway to an upper floor.



Exterior doorway.



Numerous windows.



Large rooms may need multiple heaters.



Inadequate insulation, however, the use of an optional reflective thermal shield will help overcome this issue.

## UNPACKING AND WALL MOUNTING INSTRUCTIONS

\* The enclosed foam packing will serve as a drilling template.

**1.** Mark the positions of the four holes to be drilled on the wall. (Install heater 6" to 18" above the floor to get best performance.)

**2.** Drill holes with the drill bit from the accessories pack.

**3.** Insert the plastic mounting posts into the holes.

**4.** If you are installing a heat reflector, then follow these steps:

**a.** Place the reflector in the middle (equidistant) of the 4 mounting post, and mark the corners' position on the wall.

**b.** Start at one corner, peeling off the protective paper from the back, and press the corner in place.

**c.** PLEASE NOTE THAT THE ADHESIVE IS VERY STRONG AND

IT WILL BE VERY DIFFICULT TO REPOSITION THE HEAT REFLECTOR ONCE YOU BEGIN APPLYING IT TO THE WALL.

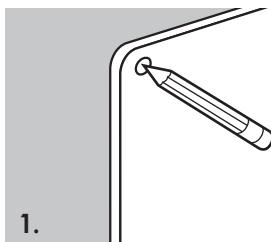
**d.** Continue pulling the paper off the back as you press the reflector onto the wall, until the paper is completely removed.

**5.** Install the panel heater onto the four mounting posts matching the four holes in the heater.

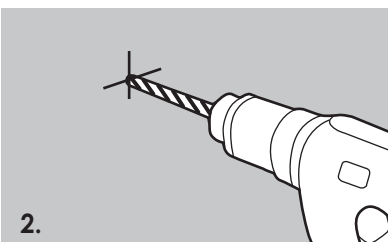
**6.** Screw the 4 fasten bolts into the mounting posts.

**7.** Put the caps onto the fasten bolts. Some glue can be used to stick the caps onto the bolts.

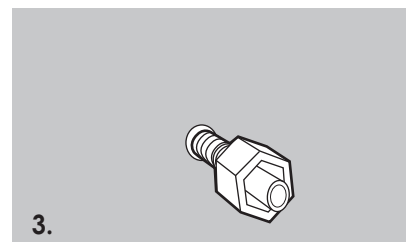
**8.** Make sure the distance between the bottom of the heater and the floor is no less than 4" when the heater is installed.



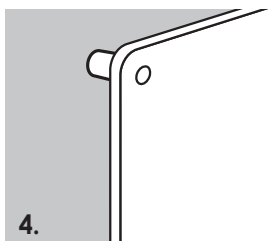
1.



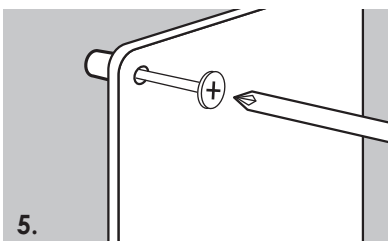
2.



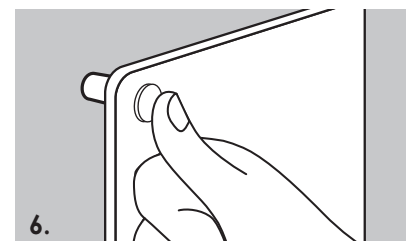
3.



4.



5.

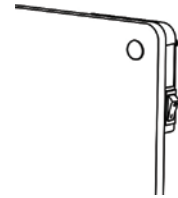


6.

## OPERATING INSTRUCTIONS

To begin to use the heater, please follow these instructions:

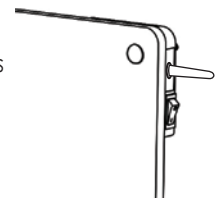
1. Check the heater to be sure it is not structurally damaged.
2. Then, just plug it in and then switch on the illuminated ON/OFF switch.
3. Unplug the heater when not in use for extended periods of time.



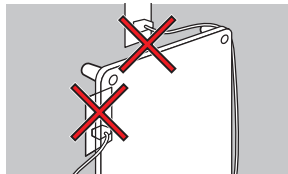
## THE T400 SERIES HAS AN INTEGRATED THERMOSTAT

The following is how the thermostat is used:

1. Extend (pull) the temperature sensor out from the switchbox until it stops at about 1". The tip temperature sensor reads the temperature of the air, and is typically a close approximation of the room's ambient air temperature.
2. When the unit is first turned on, the thermostat is programmed to set at 72° Fahrenheit. After about 3 seconds, the digital display will show the air temperature at the tip of the temperature sensor.
3. If you desire the room temperature to be higher, then press the "+" button.
4. If you desire the room temperature to be lower, then press the "-" button.
5. If you lose power, when the power is restored the thermostat will return to the 72° Fahrenheit setting.



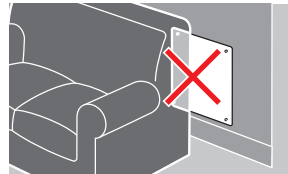
## AVOID THESE SITUATIONS WHEN USING YOUR ECO-HEATER



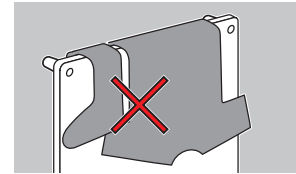
Do not mount in front of electric wall outlet.



This heater is not intended for use in bathrooms, laundry areas, and similar locations where a person might be in contact with water and can also operate the unit. Never locate heater where it may fall into a bathtub or other water container.

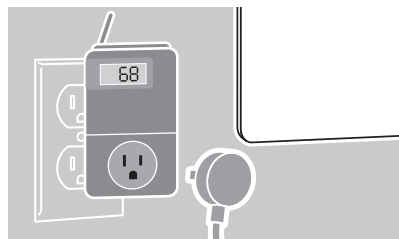


Keep combustible materials such as furniture, beddings, drapes, and paper at least 3 feet from the front of the heater.



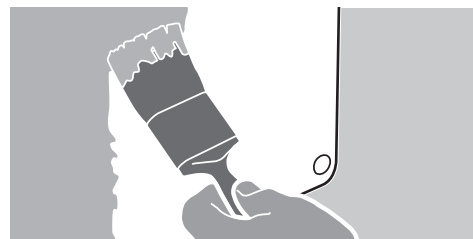
**DO NOT COVER THE HEATER.** Do not use ECO-heater to dry clothing or any other items.

## ACCESSORIES



Optional thermostats, timers and heat reflectors are available separately.

## PAINTING



Ceramic ECO-heaters can be painted with acrylic latex paint. **DO NOT PAINT WITH OIL BASED PAINT.** Painting or decorating is at the purchaser's discretion and risk. Metal heaters (M400C/L/U) cannot be painted.

## CLEANING

Before cleaning your heater, switch off the heater and allow it to cool. Disconnect the electricity supply to the appliance. The outside can be cleaned by wiping it over with a soft damp cloth and then dried. Do not use abrasive cleaning powders or furniture polish, as this can damage the surface finish.

## PACKING LIST

Panel Heater

Accessories pack set:

- 1 x drill bit (8mm)
- 4 x rail fittings
- 4 x screw bolts
- 4 x caps for bolts
- 1 x Instruction manual

**NOTE:** Packing material serves as drilling template.

## SPECIFICATIONS

**Model No.:** NA400S, C400C/L/S/U, M400C/L/U, T400C/L/U

**Voltage/Frequency/Power:** AC 120V, 50/60Hz, 400W

**Current:** 3.3 Amps(400W)

**Power:** 400 Watts

**Tolerances on all specifications:**  
Approximately +5%, -10%.

## LIMITED WARRANTY & SERVICE

ECO-heater electric panel heaters are warranted against defects in workmanship and materials for three (3) years from date of purchase.

**THE UNIT MUST BE REGISTERED AT: [www.ecoheater.com](http://www.ecoheater.com) WITHIN 30 DAYS OF PURCHASE.**

This warranty does not apply if damage or malfunction occurs due to accidents, improper handling or operation, shipping damage, abuse, misuse, alterations, unauthorized repairs made or attempted, damage by accident, theft, fire, flood, external causes such as, but not limited to, improper installation of wiring, operation with connected voltage more than 5% greater than the nameplate voltage, blown fuses, inadequate electrical power, or any use of the product not authorized by the manufacturer, and normal wear and tear.

This warranty does not cover deterioration of the appearance of the product, any cosmetic part or finish defects such as paint, ceramics, plastic, dents, scratches, chips, breakage, loss, or peeling. Minor hairline (non-structural) cracks on the paint surface and/or board material are not considered a warrantable item. If this does occur, the safety and performance of the heater will not be affected by cosmetic defects.

The customer shall be responsible for all costs incurred in the removal or installation of the product, including

but not limited to labor costs and shipping costs to return the heater to the ECO-heater service center. Within the limitations of this warranty and at the discretion of ECO-heater, we will repair or replace the heater. The warranty is provided for personal use of products only. Products used for commercial purposes are excluded from coverage.

Should repair or replacement be necessary during the warranty period, contact ECO-heater (see below) for return address instructions and return your complete product, a copy of your receipt, and proof of purchase.

**You shall be responsible for any shipping & handling charges for both the return of your unit, and the sending of a replacement unit, at the discretion of ECO-heater.**

THE ABOVE WARRANTY IS IN LIEU OF ALL OTHER WARRANTIES EXPRESSED OR IMPLIED. AND ALL IMPLIED GUARANTEES OF PERFORMANCE OR FITNESS FOR PURPOSE WHICH EXCEED THE AFORESAID EXPRESSED WARRANTY ARE HEREBY DISCLAIMED AND EXCLUDED FROM THIS AGREEMENT.

ECO-heater, Inc. SHALL NOT BE LIABLE NOR DOES THIS WARRANTY COVER LIABILITY FOR INCIDENTAL OR CONSEQUENTIAL DAMAGES FOR ANY CAUSE WHATSOEVER, INCLUDING BUT NOT LIMITED TO; NEGLIGENCE, TORT, STRICT LIABILITY OR CONTRACT.

## CONTACT US

If any items are missing or damaged when opening the box please:

**DO NOT RETURN THE HEATER TO YOUR RETAIL STORE!**

Please direct all inquiries to: [warranty@ecoheat.com](mailto:warranty@ecoheat.com)

**PLEASE REGISTER YOUR UNIT AT: [www.ecoheater.com/register](http://www.ecoheater.com/register)**

Scan here  
to learn more:



©2012 ECO-heater, Inc.®

Made in China

[www.ecoheat.com](http://www.ecoheat.com)



Tested and Certified to  
Underwriters Laboratories (UL) Safety Standard 2021