

# Posi Wave

POOM contract collection by Lucente


**POSI W-S** Grey painted metal structure. Diffuser in screen-printed thermoplastic.

## TECHNICAL DETAILS

Environment: indoor

Mounting: pendant

Net weight (kg): 2,35

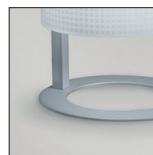
Electrification:  
E27 2x70W A55 

Code - Finishing  
T196 28

Certifications:



## FINISHING



28 - Silver grey

