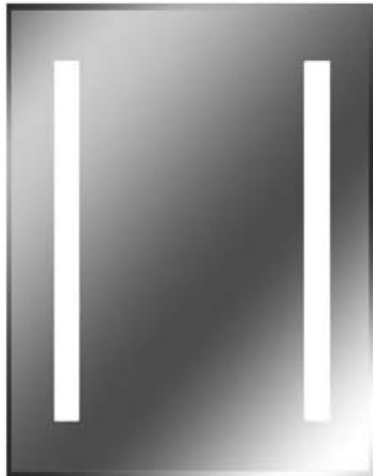


saxby  
lighting



## **Glimpse Mirror & Shaver Socket**

I 3885

Thank you for purchasing this light fitting.

Please read the instructions carefully before use to ensure safe and satisfactory operation of this product.

Please retain these instructions for future reference.

## Warning

**This is a Class I product and must be earthed.**

Please read these instructions carefully before commencing any work.

This unit must be fitted by a competent and qualified electrician.

Install in accordance with IEE Wiring regulations and current Building Regulations.

To prevent electrocution switch off at mains supply before installing or maintaining this fitting. Ensure other persons cannot restore the electrical supply without your knowledge.

This light fitting should be connected to a fused circuit.

If replacing an existing fitting, make a careful note of the connections.

Always use the correct type and wattage bulb. Using the incorrect wattage bulb will damage the bulb and ballast.

When changing a bulb, always switch off at the mains and allow the old bulb to cool down before handling.

Dispose of used bulbs carefully and responsibly.

This product is not suitable for dimming.

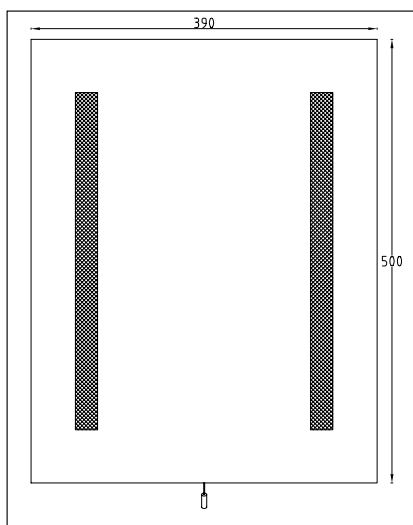
This product is rated at IP44.

Waste electrical products should not be disposed of with household waste. Please recycle where facilities exist.

Check with your local authority or retailer for recycling advice.

## Specification

Voltage:	240V 50Hz a.c.
Lamp:	2 x 15W T8 G13
IP rating:	44

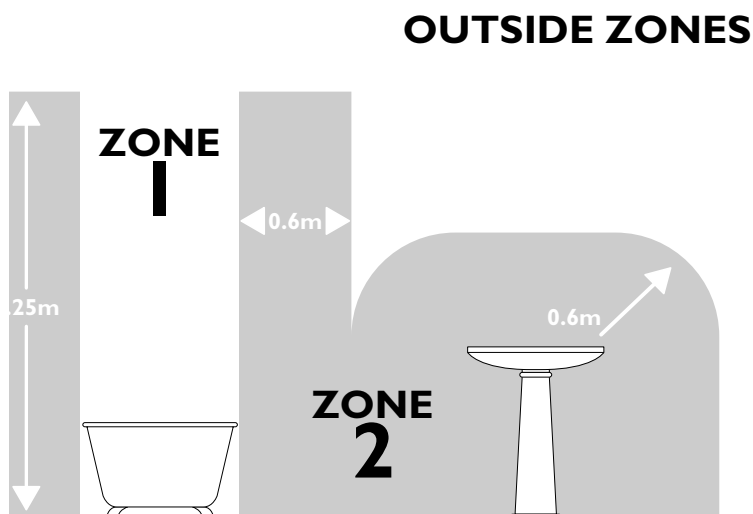


## Layout

This product has special protection against the ingress of moisture and is manufactured to meet IP44 standards

This product is suitable for use in Zone 2 and outside Zones of a bathroom. See diagram.

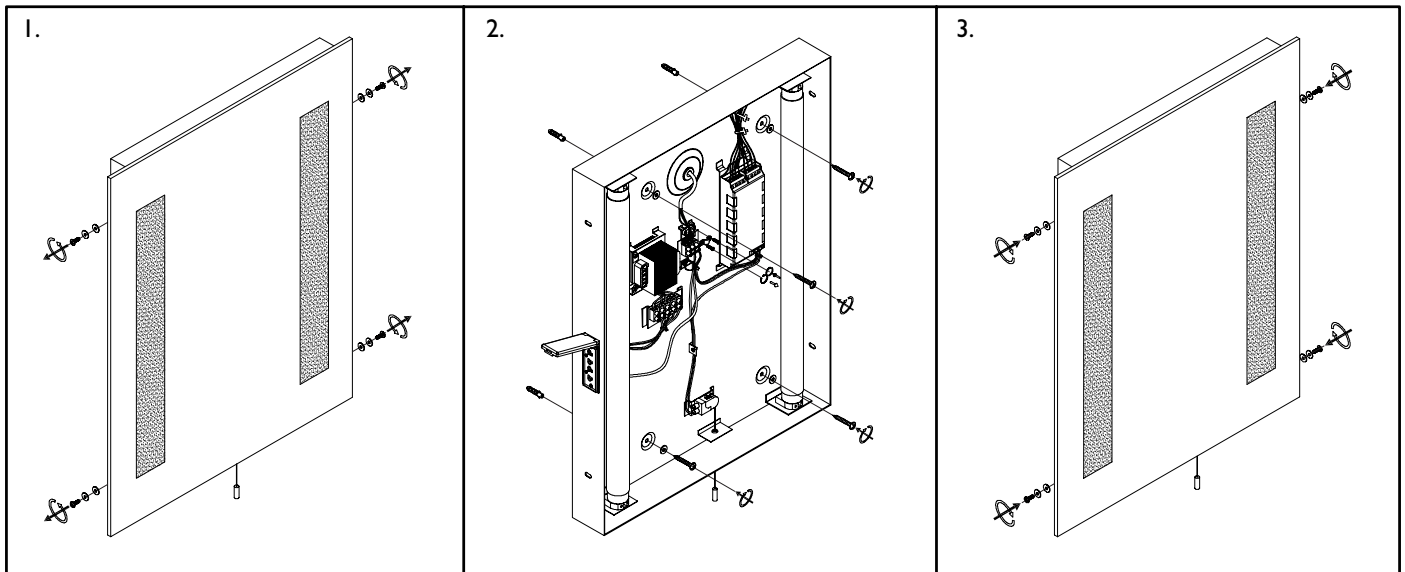
**If this unit is being fitted in a room containing a bath or shower, a 30mA RCD must be used in accordance with IEE regulations.**



## Installation

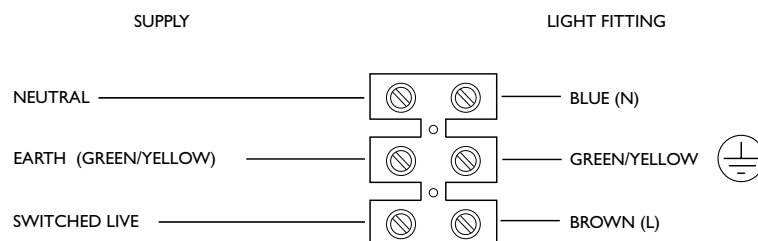
Existing fittings must be completely removed before installation of a new product. Before removing the existing fitting, **carefully note the position of each set of wires**.

1. Remove the wall back from the product by removing the side fixing screws and rubber washers. See Fig. 1.
2. Carefully pierce a small hole in the rubber grommet in the centre of the wall back to allow the cable to pass through. See Fig. 2.
3. Ensure the drain hole is at the base of the wall back, and that the product is correct orientated with the pull cord at the bottom. Thread the cable through the grommet
4. Ensure the wall is capable of holding the weight of the product. Take care to avoid damaging any concealed wiring and pipes. The correct fixings should be used for brick, cavity walls or plasterboard. See Fig. 2.
5. Fix into position. Take care not to trap the supply wire.



## Wiring

Having correctly identified the wiring from your existing light fitting, pull the wire through the hole and connect to the connection block inside the product in the following way:



## Check That

- You have correctly identified the wires.
- The connections are tight.
- No loose strands have been left out of the connection block.

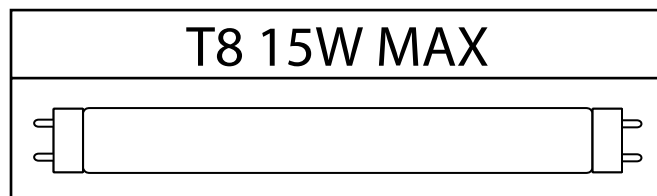
## Commissioning

6. Refit the mirror onto the wall back. Ensure that the seals are correctly located before securing.
7. Replace fuse or circuit breaker and switch on. Your light is now ready for use.
8. To access the shaver socket, lift the grey flap up on the side. Select either 240V or 110V depending on the model of shaver.

## Fitting / Replacing Bulbs

---

When changing a bulb, always switch off at the mains and allow the bulb to cool before handling. Used bulbs should not be disposed of with household waste. Please recycle where facilities exist. Always use the correct type and wattage bulb. Using the incorrect wattage bulb will damage the bulb and ballast.



## Care and Cleaning

---

We recommend cleaning with a soft dry cloth.

Do not use solvents or abrasive cleaners as these could damage the finish.

Mirror parts - Wash in warm water or a damp cloth. Do not use abrasive materials as these will damage the finish.

## Recycling Advice

---



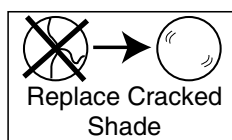
Waste electrical products should not be disposed of with household waste. Please recycle where facilities exist. Check with your Local Authority or retailer for recycling advice.

## Safety Information

---

**Live Voltages may be present in this unit even when turned off or when completely disconnected.**

For your safety, always switch off the supply before cleaning.



The mirror must be replaced immediately should it become cracked or damaged. This fitting must not be used without the mirror in place.



Saxby Lighting Ltd. NW10 7UL