

Check That _____

Check that.....

You have correctly identified the wires.

The connections are tight.

No loose strands have been left out of the connection block.

Commissioning _____

4. Reassemble the unit, taking care not to trap any on the internal wiring.
7. Replace fuse or circuit breaker and switch on. Your light is now ready for use.

Fitting / Replacing Bulbs _____

This system contains non-replaceable parts and cannot be serviced. If damage occurs the part should be scrapped.

Care and Cleaning _____

We recommend cleaning with a soft cloth.

Do not use solvents or abrasive cleaners as these could damage the finish.

Recycling Advice _____

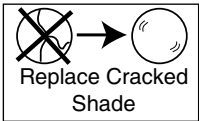


Waste electrical products should not be disposed of with household waste. Please recycle where facilities exist. Check with your Local Authority or retailer for recycling advice.

Safety Information _____

For your safety, always switch off the supply before cleaning.

This system contains non-replaceable parts and cannot be serviced. If damage occurs the part should be scrapped.



The shade must be replaced immediately should the shade become cracked or damaged. This fitting must not be used without the shade in place.



Saxby Lighting Ltd. BH23 3PE

saxby

lighting



Odessa LED Wall Light

I 1095 - 3 x IW LED Wall Light

I 1096 - 6 x IW LED Wall Light

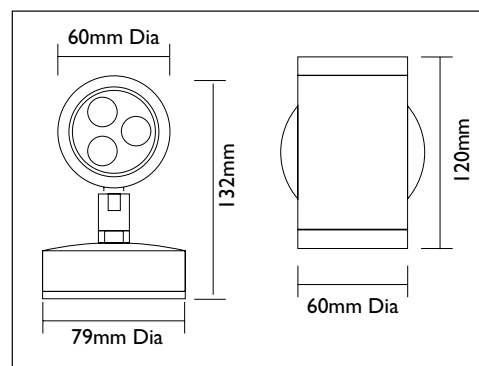
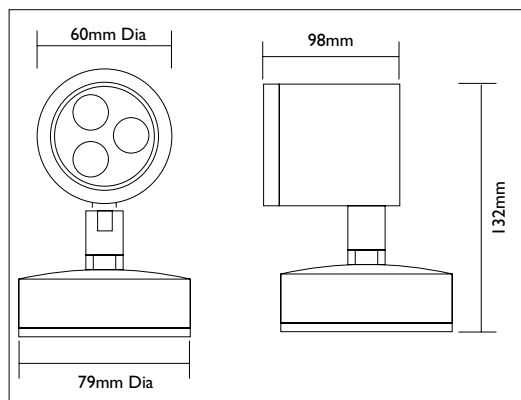
Thank you for purchasing this light fitting.
Please read the instructions carefully before use to ensure safe and satisfactory operation of this product.
Please retain these instructions for future reference.

Warning

This is a Class I product and must be earthed.
Please read these instructions carefully before commencing any work.
This unit must be fitted by a competent and qualified electrician.
Install in accordance with IEE Wiring regulations and current Building Regulations.
To prevent electrocution switch off at mains supply before installing or maintaining this fitting.
Ensure other persons cannot restore the electrical supply without your knowledge. If you are in any doubt, please consult a qualified electrician.
This light fitting should be connected to a fused circuit.
If replacing an existing fitting, make a careful note of the connections.
This system contains non-replacable parts and cannot be serviced. If damage occurs the part should be scrapped.
This product is not suitable for dimming.
Waste electrical products should not be disposed of with household waste. Please recycle where facilities exist. Check with your local authority or retailer for recycling advice.
This product is rated at IP44.
This product is not suitable for location in or near a marine environment.

Specification

Voltage:	240V 50Hz a.c.
Class:	I (Earthed)
Lamp:	11095 : 3 x 1W White LED
Lamp:	11096 : 6 x 1W White LED
IP rating:	44



Layout

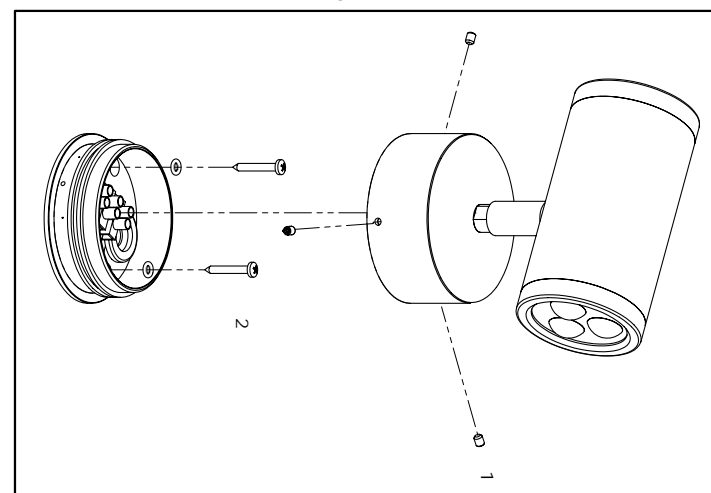
- Plan the desired layout of this fitting carefully, ensuring the cables will reach the distance between the junction box and the light fitting.
- We recommend that you use H05RN-F specification cable (not supplied) which is an outdoor grade, rubber sheathed cable. The mains supply cable must have a minimum cross sectional area of 1.0mm²
- Cables must be protected using suitable conduit or plastic trunking.

Installation

Existing fittings must be completely removed before installation of a new product. Before removing the existing fitting, **carefully note the position of each set of wires**.

- Remove the existing light fitting (if applicable) and take a note of the wiring positions.
- Remove mounting box from product by removing the three grub screws (1). Pull terminal block off of retaining pegs in mounting box. Carefully pierce a small hole in the rubber gasket in the centre of the mounting box to allow the cable to pass through.
- Thread the cable through the hole and fix the mounting box to the wall using the screws and plugs supplied (2). Take care not to damage any concealed wiring.

Please note that model 11096 is shown in diagram



Wiring

Having correctly identified the wiring from your light fitting, connect to the approved outdoor rated external terminal block in the following way:

