



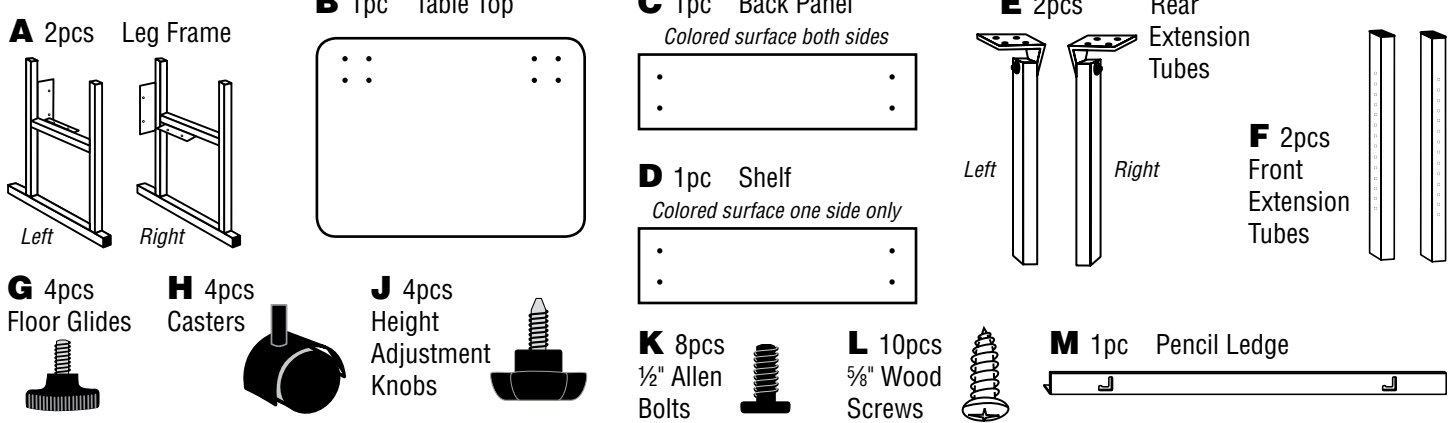
MiniMaster™ Drawing Table

Assembly Instructions

For MM36-3-WBR and
MM36-5 purchased after April 2008

Tools required: Phillips screwdriver.

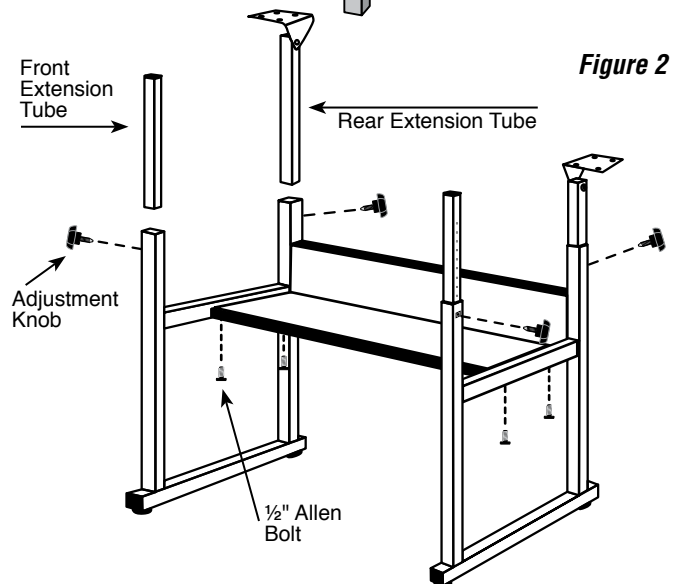
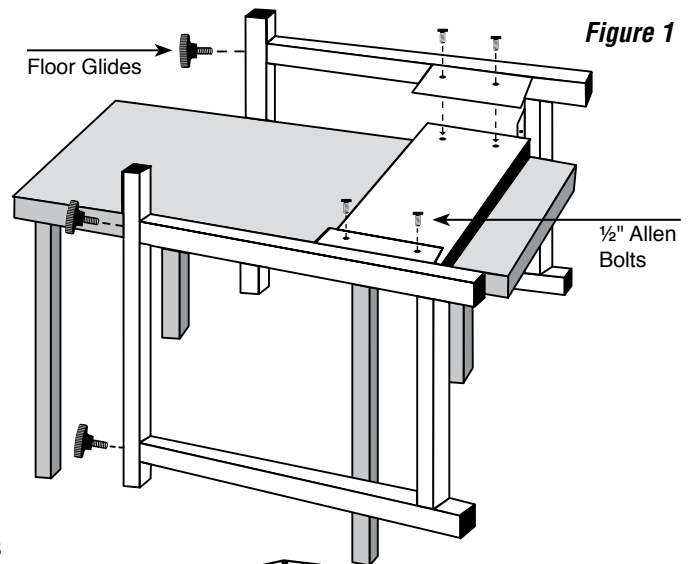
Parts Included:



To Assemble:

- 1** Unpack and inspect contents to confirm that you have all parts listed above.
- 2** Screw floor glides (**G**) or casters (**H**), whichever you prefer, into bottom tubes of left and right leg frames (**A**).
- 3** Place back panel (**C**) on a bench or table (at least 20" high) with ends hanging over the edge and threaded holes facing up.
- 4** Hang left leg frame (**A**) on top of back panel (**C**) as shown in **Figure 1**. Align holes in steel flange with holes in back panel and install 1/2" Allen bolts (**K**). Be sure ends of back panel are pushed flush against steel tubing and tighten bolts securely.
- 5** Repeat step **4** for right leg frame (**A**).
- 6** Carefully remove base assembly from table/bench and place upright on floor. Use care not to overstress back panel connections at this time.
- 7** Place shelf (**D**) with pre-drilled holes facing down onto the steel shelf flanges. Attach with 1/2" Allen bolts (**K**) from below. Be sure ends of shelf panel are pushed flush against steel tubing and tighten bolts securely.
- 8** Insert front and rear extension tubes (**E** and **F**) into base assembly. Pay close attention to correct orientation of attachment brackets on left and right rear tubes, as shown in **Figure 2**. Install height adjustment knobs (**J**) in each leg and set each extension tube in the third hole for the time being.

Hint Extension tube holes align with height adjustment knobs when half of the hole above is showing, as shown in **Figure 3**. Set base assembly aside.

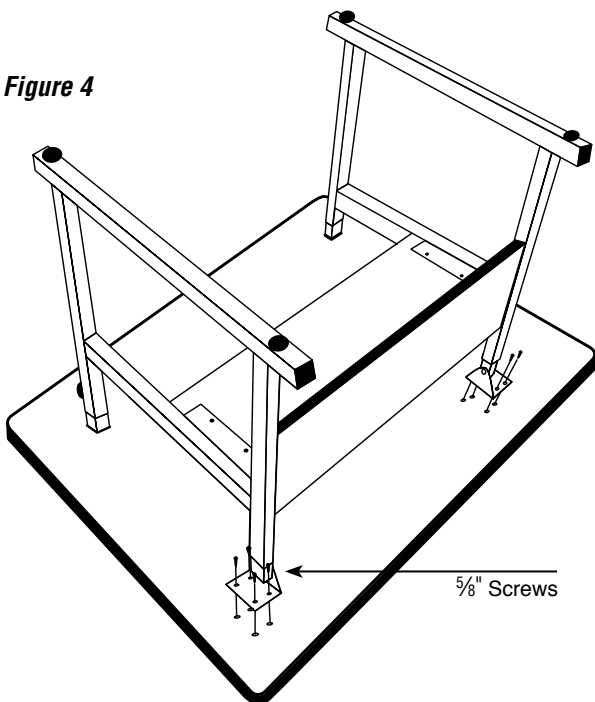


9 Place table top (B) on carpeted or protected floor with pre-drilled side up. Carefully turn table assembly upside down and place on table top. Align holes in rear leg extension brackets (E) with pre-drilled holes in table top. Connect using 5/8" wood screws (L) and tighten firmly. Use care not to over tighten and strip.

10 Carefully return table assembly to the upright position.

11 Attach pencil ledge to front edge of table top using two screws (L) as shown in **Figure 5**. Pencil ledge prevents materials from sliding off of a tilted surface and the slotted connection allows for easy adjustment from flush to elevated position.

Figure 4



12 Table is now ready to use. Adjust table top to desired height and angle using the height adjustment knobs and enjoy!

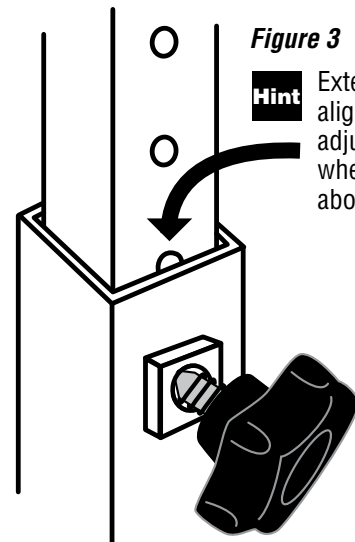
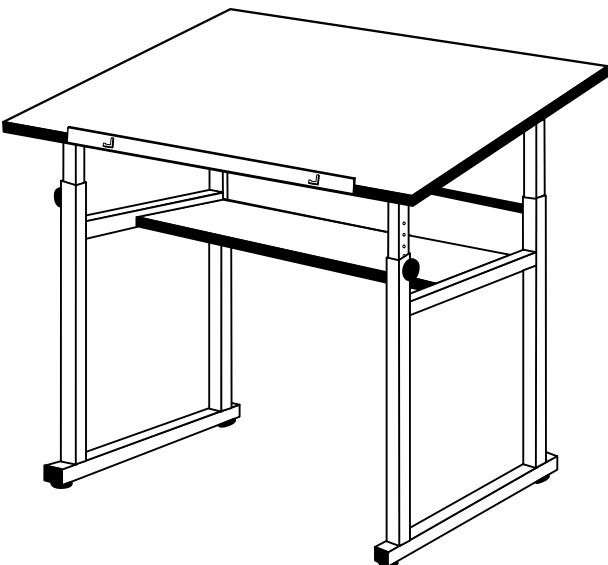
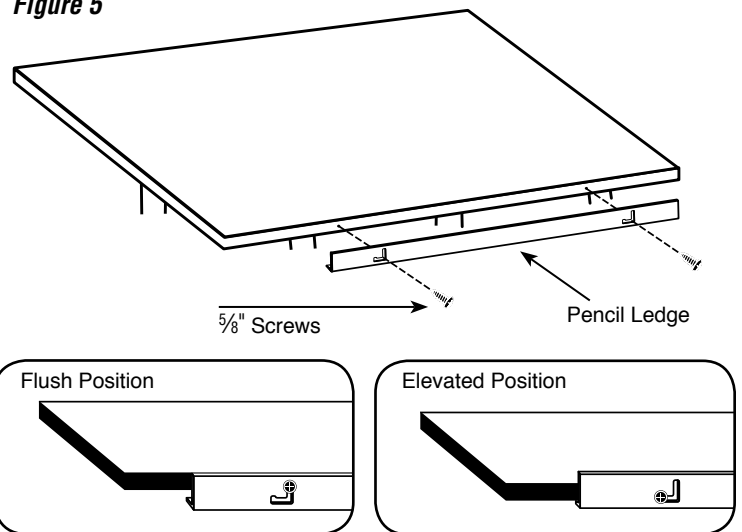


Figure 3

Hint

Extension tube holes align with height adjustment knobs when half of the hole above is showing.

Figure 5



Send us your comments and suggestions and we'll send you free Drafting Dots!



Alvin Drafting Dots (#DM123) work well to tape your paper and other media to the tilted table surface. To receive a free roll of Drafting Dots, simply visit the "Contact Us" page on our website www.alvinco.com and submit your comments and suggestions about our MiniMaster table. We are constantly working on product improvements and look forward to hearing from you.