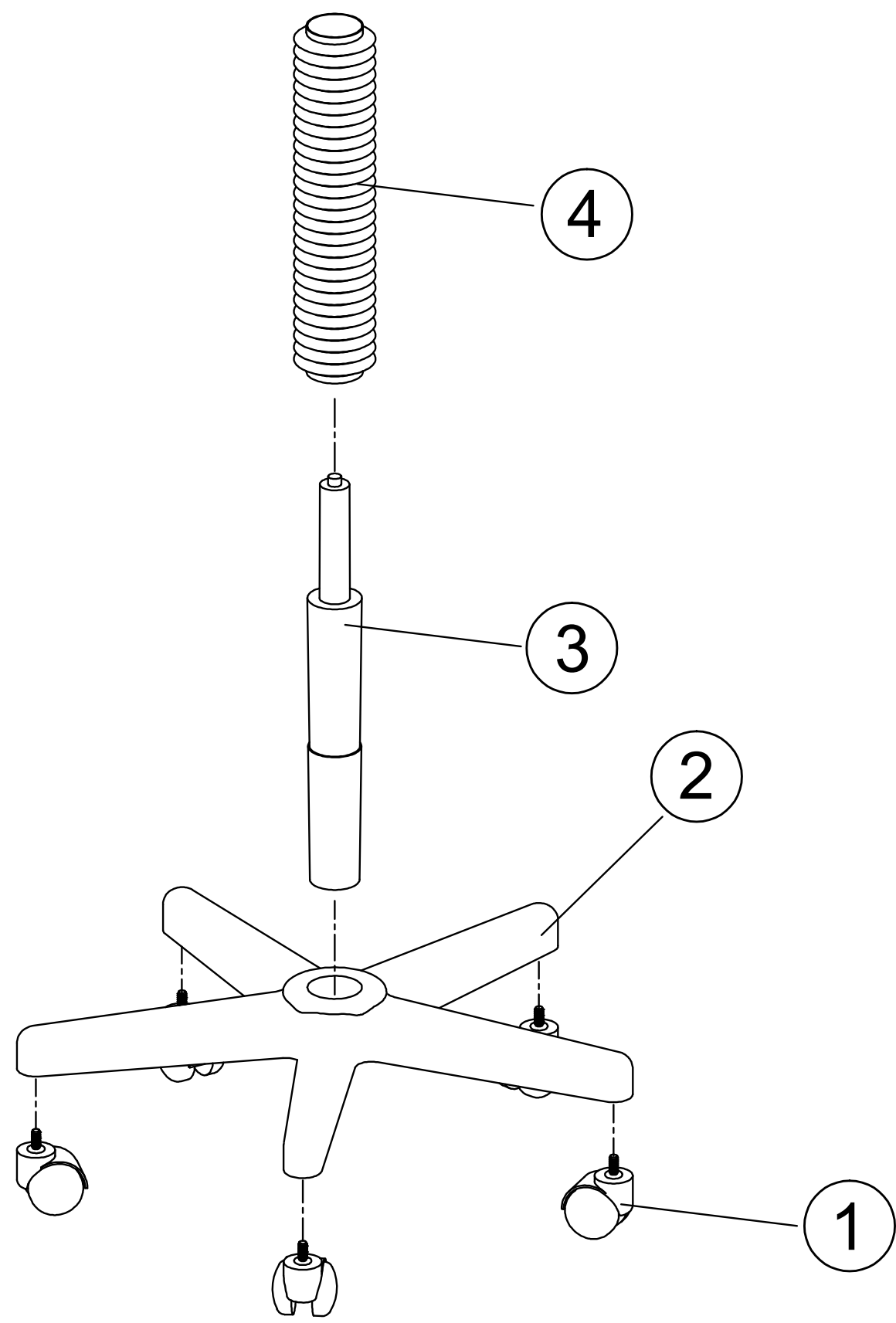




Assembly Instructions for Drafting Chair No . DC204

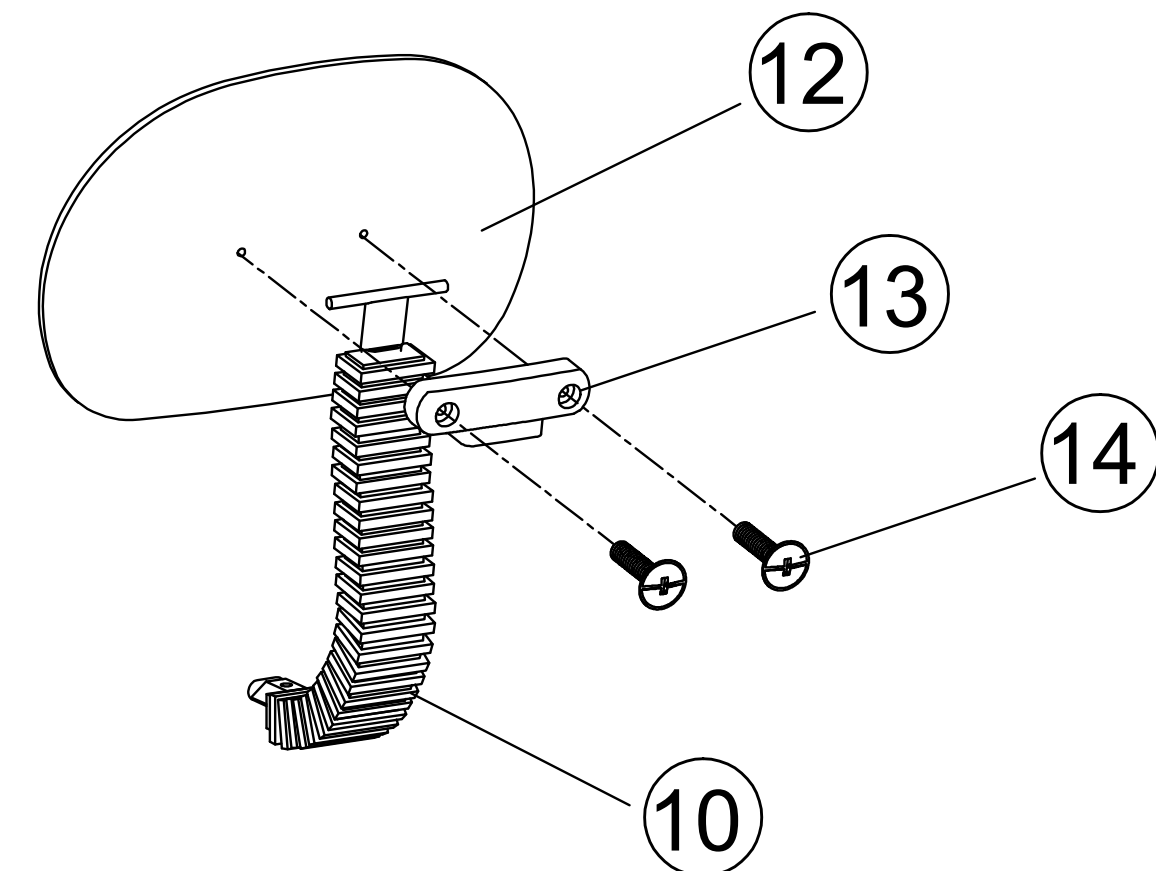
Parts List

Key	Qty	Description	Key	Qty	Description	Key	Qty	Description
1	5	Casters	6	1	Seat cushion	11	1	Backrest depth adjustment knobs and washers
2	1	Base	7	2	3/4" rear seat plate screws			
3	1	Gas cylinder	8	4	1 1/2" front seat plate screws	12	1	Backrest cushion
4	1	Cylinder cover	9	1	Footrest	13	1	Backrest connector
5	1	Seat plate	10	1	Backrest support and cover	14	2	1" backrest screws



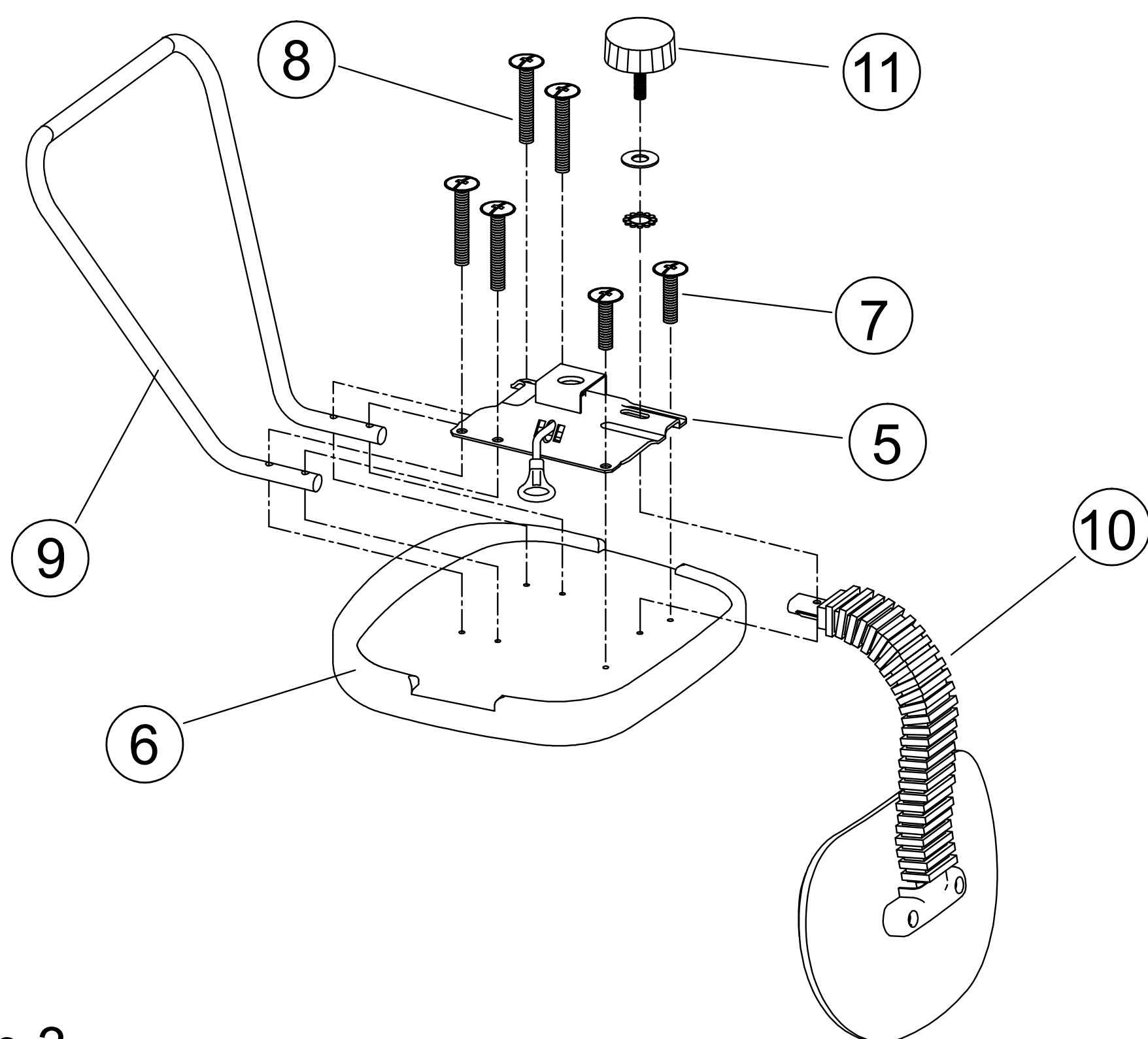
Step 1.

Insert 5 pcs casters (1) into base (2). Insert gas cylinder (3) into center of base and slide cylinder cover (4) over cylinder. Set base assembly aside.



Step 2.

Attach backrest support (10) to backrest cushion (12) using backrest connector (13) and 2 pcs 1" backrest screws (14). Tighten securely..



Step 3.

Place seat cushion (6) upside down on floor and align seat plate (5) with threaded holes. Begin by attaching with 2 pcs 3/4" rear seat plate screws (7). Next, align footrest (9) with 4 front holes and attach using 4 pcs 1 1/2" front seat plate screws (8). Tighten all 6 screws securely. Slide lower end of backrest support (10) into seat plate and secure with backrest adjustment knob (11). Take note how backrest depth can be adjusted later for comfort.

Step 4.

Place seat cushion assembly on top of gas cylinder. Make sure that it is firmly seated on cylinder before attempting to sit on chair. Adjust to desired height using lever...



Made in Taiwan

PREVENTIVE MAINTENANCE AND WARNING

- USE THIS PRODUCT ONLY FOR SEATING ONE PERSON AT A TIME.
- DO NOT USE CHAIR AS STEP STOOL/LADDER.
- DO NOT USE CHAIR UNLESS ALL BOLTS, SCREWS AND KNOBS ARE TIGHT. AT LEAST EVERY SIX MONTHS, CHECK ALL BOLTS, SCREWS AND KNOBS TO BE SURE THEY ARE TIGHT.
- IF ANY PARTS ARE MISSING, BROKEN, DAMAGED OR WORN, STOP USE OF THE PRODUCT UNTIL REPAIRS ARE MADE USING FACTORY AUTHORIZED PARTS.
- FAILURE TO FOLLOW THESE WARNINGS CAN RESULT TO SERIOUS INJURY.

