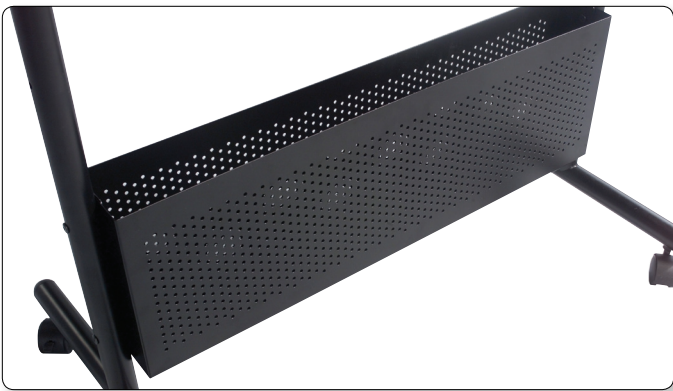


Nest Easel



In Stock





Nest Easel

- The Nest Easel is designed to nest together for ease of transport and compact storage.
- Available with silver or black powder-coated steel frame, and a double-sided dry erase markerboard surface in either magnetic porcelain steel, or Dura-Rite® HPL. Surface measures 40 3/4"H x 28 3/4"W.
- Easel features accessory trays and flip chart hooks on each side, as well as a perforated storage box that can be adjusted in height to accommodate a variety of items.
- Unit sets at 65" or 72" high. Base includes 2" locking casters.

A. Nest Easel - Dura-Rite®			
Part No.	Color	Dimensions	Ship Wt.
785*	Silver	72"H x 34 3/4"W x 24"D	57 lbs
781*	Black	72"H x 34 3/4"W x 24"D	57 lbs
B. Nest Easel - Porcelain Steel			
Part No.	Color	Dimensions	Ship Wt.
785P*	Silver	72"H x 34 3/4"W x 24"D	69 lbs
781P*	Black	72"H x 34 3/4"W x 24"D	69 lbs



Made in China.
*Ships UPS



Balt® & Best-Rite® are brand divisions of MooreCo Inc.

2885 Lorraine Ave | Temple, TX 76501
p: 800.749.2258 | f: 800.697.6258

www.moorecoinc.com