



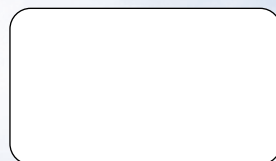
Installation Manual & Operation Instructions



BB-*i*3000

Manufactured by:
BBC Innovation Corporation
205 Berg Street
Algonquin, IL 60102
www.biobidet.com

Distributed by:



- This unit is specially manufactured for household use.
- Please read all operating instructions before installation.

Notes :

1. This product should be installed according to this manual's directions.
2. Please keep this manual for future reference.
3. Please register the attached Warranty upon purchase of bidet.
4. Observe all precautions as noted on this manual.

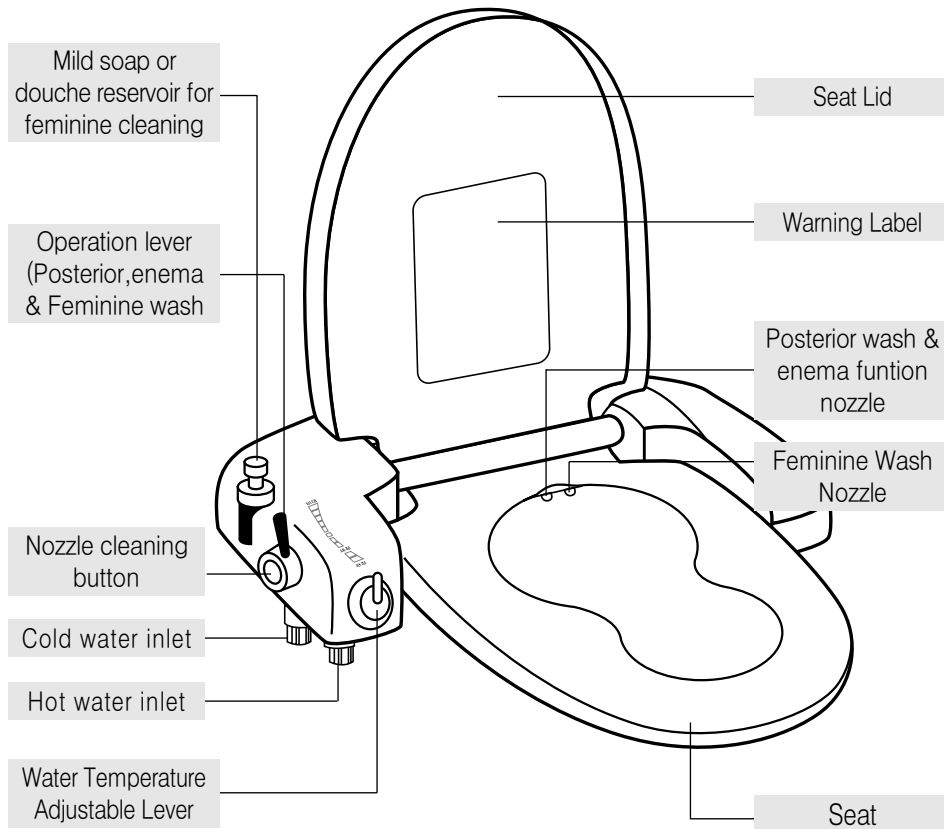


Properly installed and maintained, your new bidet should provide years of optimal operations.
Read this manual before installation.

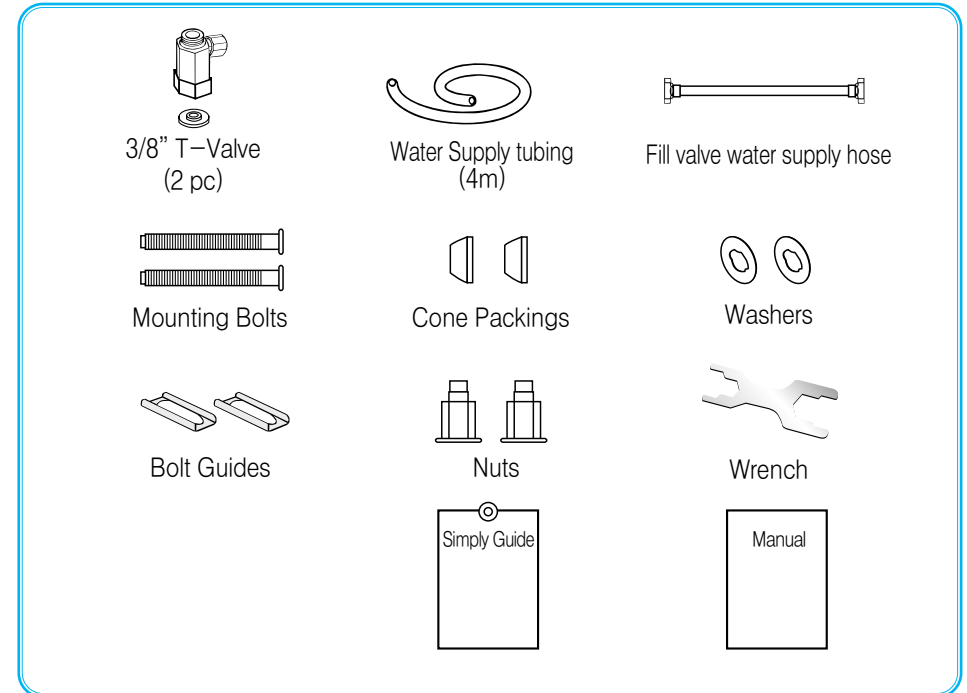
Contents

| | | |
|-----------------------|-------|----|
| IMPORTANT INFORMATION | ----- | 4 |
| IDENTIFICATION | ----- | 8 |
| GENERAL PRECAUTIONS | ----- | 9 |
| OPERATION | ----- | 10 |
| INSTALLATION | ----- | 12 |
| MAINTENANCE | ----- | 14 |
| TROUBLE SHOOTING | ----- | 15 |
| CHARACTERISTICS | ----- | 15 |
| WARRANTY | ----- | 16 |
| WARRANTY REGISTRATION | ----- | 17 |

IDENTIFICATION



IDENTIFICATION

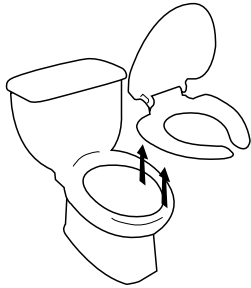


GENERAL PRECAUTIONS

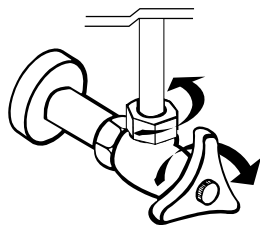
1. Water supply should have a water pressure between 2.0 – 7.5kgf/cm² (28.4psi~ 106.7psi.)
2. Only connect to clean water pipe.
3. Take the protective measures to prevent from freezing.
4. Do not expose to direct sunlight, as it may discolor the plastic.
5. Do not push or pull the connecting tubes, it may cause water leakage.
6. Do not apply excessive force to the shower nozzle.

1 Removing the existing seat and lid.

-Remove existing seat and lid

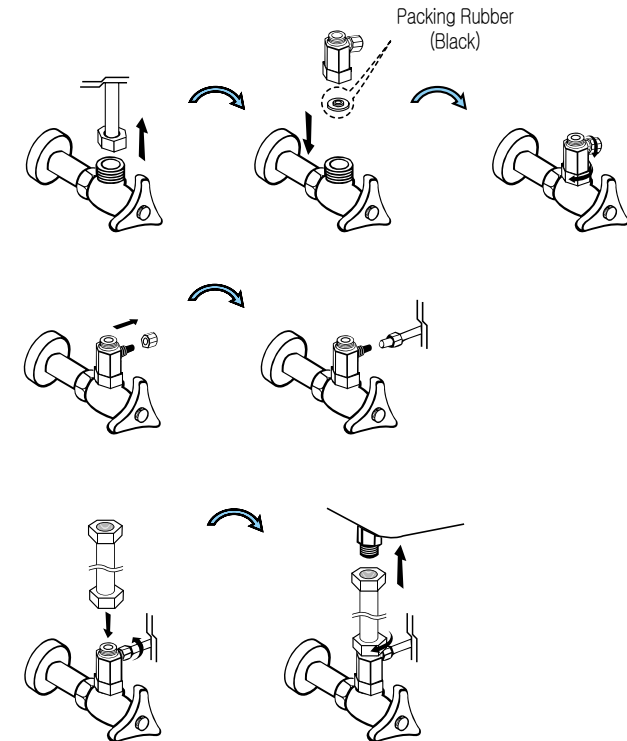


2 Close water supply shut off valve.



3 Connecting the T-Valve (Cold Water / Hot Water)

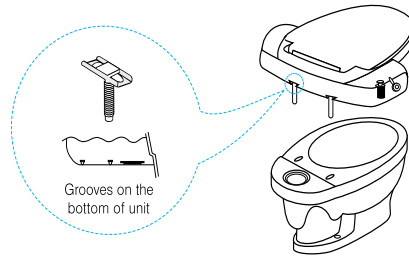
1. Flush out remaining water in water tank
2. Removing existing fill valve water supply hose.
3. Install supplied T-valve.
4. Connect "Cold" / "Hot" water supply tube.
5. Connect supplied fill valve water supply hose. (7/8" x 3/8")



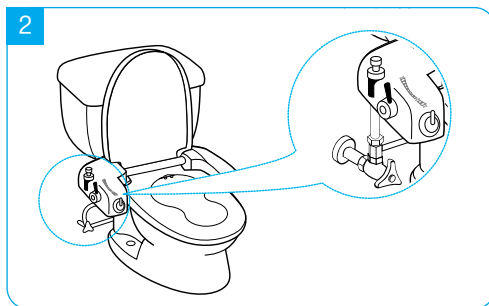
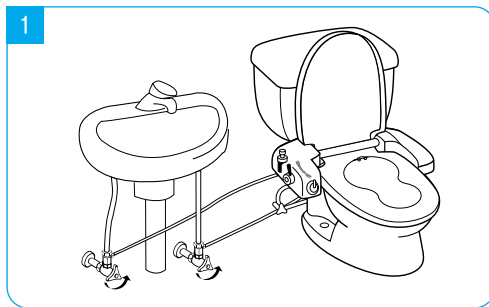
Tip:
Do not over tighten supplied parts when installing.
Use only hand pressure initially,
then tighten it gradually as checking for leakage.

4 Installing BB-i3000.

1. Place mounting bolts into mounting brackets and slide into the mounting bracket guide rail on the bottom of the main unit.
2. Securely fasten cone packing from bottom to secure the unit to toilet.



5 Connect both hot and cold water supply tube to water inlet on bidet seat.



Cleaning the nozzle

- Pull out the nozzle and clean the nozzle with toothbrush.
- After cleaning the nozzle, push the nozzle-cleaning button on the operation lever to activate the self-cleaning function.

*** CAUTIONS ***

- Do not drink the spraying water from the nozzles.
- Do not pull nozzle with excessive force.

