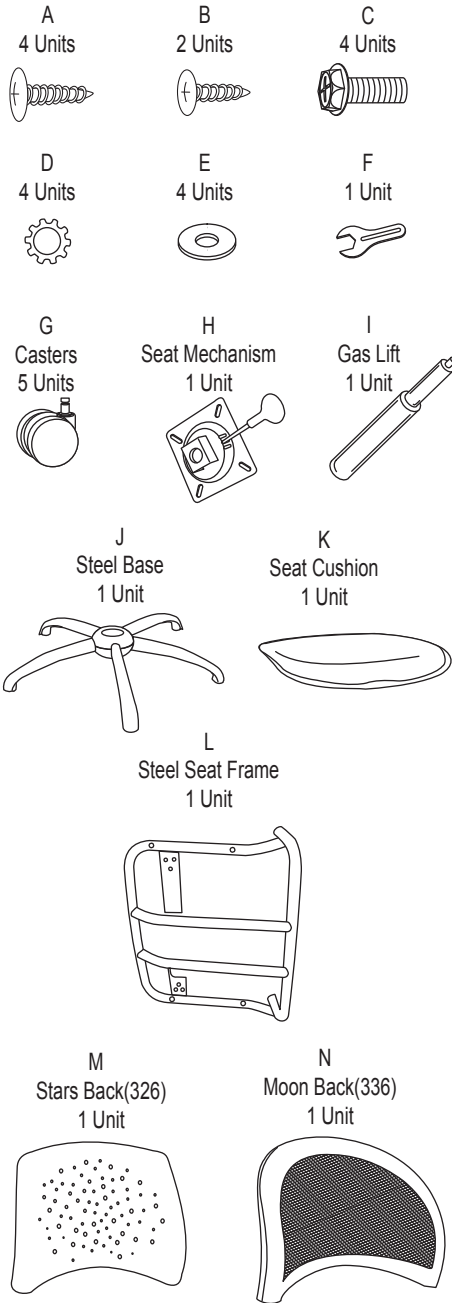


Model 326 / 326-AA3 / 326-DK / 326-AA3-DK Stars Swivel Chair 336 / 336-AA3 / 336-DK / 336-AA3-DK Moon Swivel Chair

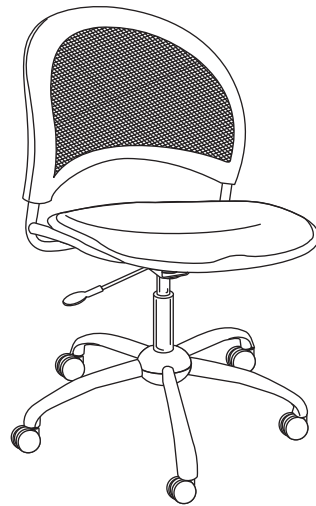
Parts Listing



326



336



WEIGHT CAPACITY: 250 lbs.

Assembly Notes:

During assembly, hand tighten screw only when all screws are in place, you may then tighten all screws completely.

CAUTION:

1. Do not use this chair as a step ladder.
2. Check for loose screws and tighten them every 6 months.

Assembly Instructions



Tools Needed: Phillips Head Screwdriver
Please read all instructions before assembly.

Step 1A: Insert Casters (G) into Swivel Base (J).



If you are assembling a model with a DK Foot Ring please proceed to subsequent pages for drafting kit assembly instructions.

Step 1B: Insert Gas Lift (I) into Swivel Base (J).

Step 2: Attach Seat Cushion(K) to Seat Frame (L) using screws (A) and washers (D). Tighten screws with phillips head screwdriver.

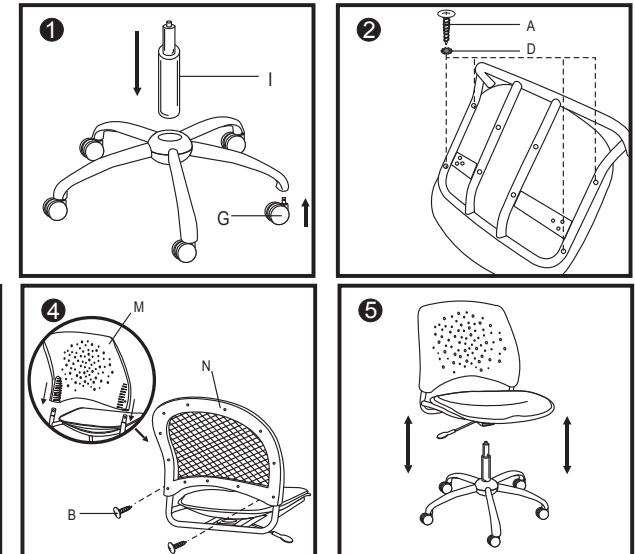
Step 3: Attach Seat Mechanism (H) to the Seat Frame (L) with 4 Bolts (C) and washers (E), using the Wrench (F) that is provided.



If you are assembling a model with optional Adjustable Arms please proceed to subsequent pages for armrest assembly instructions.

Step 4: Place the plastic Seat Back (M / N) onto top of Steel Frame (L). Line up holes in the rear of the seat back and frame and connect using two short screws (B). Tighten screws with phillips head screwdriver.

Step 5: Take entire chair frame and place Seat Mechanism (H) onto Gas Lift (I), and press down firmly to secure.



ofm
Furniture For The Real Office™

161 Tradition Trail Holly Springs, NC, 27540
800-520-7471 (voice) 919-362-4765 (fax)
919-303-6389 (voice) www.ofminc.com
support@ofminc.com

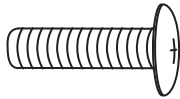
Model AA-3 Adjustable Arms

Parts Listing

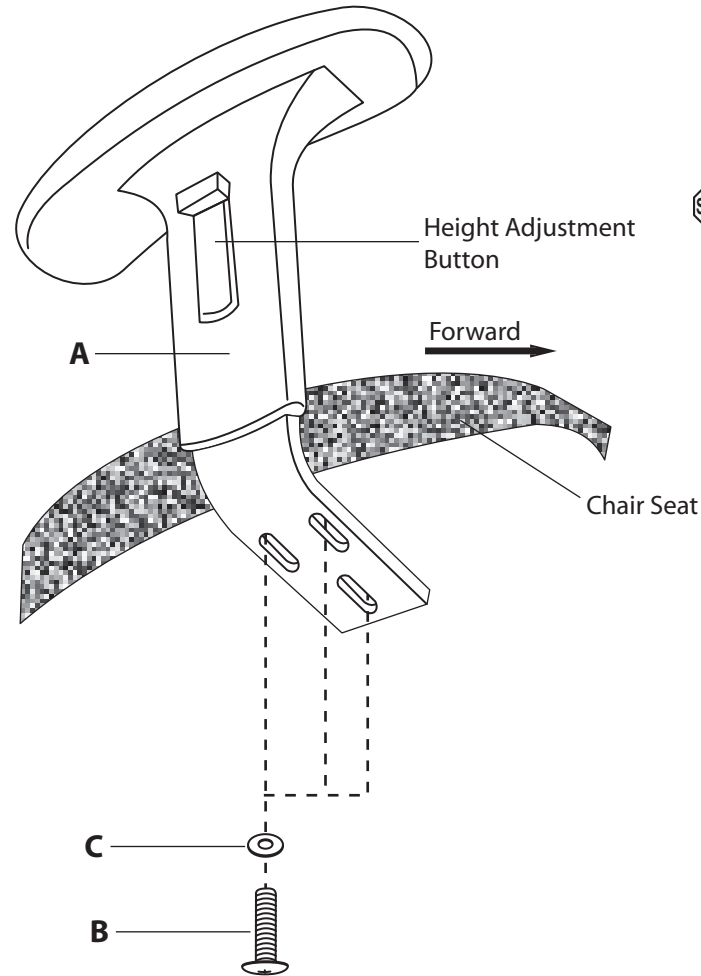
A
AA-3 Adjustable Armrest
2 Units



B
M6x30mm Screw
6 Units



C
Washer
6 Units



Assembly Instructions



Tools Needed: Phillips Head Screwdriver
Please read all instructions before assembly.

- Step 1:** Turn Chair Seat upside down and place on a clean, non-abrasive surface.
- Step 2:** Align the pre-drilled holes in the Adjustable Armrest (A) with the holes in the bottom of the Chair Seat, making sure that the arms face the correct direction.
- Step 3:** Place three Washers (C) onto three M6x30mm Hex Screws (B) and insert through the Armrest (A) holes and into the Chair Seat.
- Step 4:** Tighten Screws (B) using wrench or screwdriver. It is recommended that to assure screws are secure, a screwdriver is used to tighten.

To Adjust Arms:

Pull up on the Height Adjustment Button and slide to desired height.

Assembly Notes:

During assembly, hand tighten screw only when all screws are in place, you may then tighten all screws completely.

CAUTION:

1. Do not use this chair as a step ladder.
2. Check for loose screws and tighten them every 6 months.

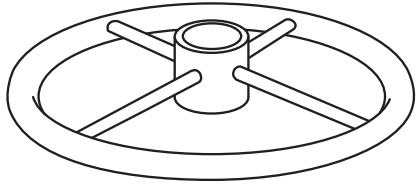
ofm^U_Z
Furniture For The Real Office™

161 Tradition Trail Holly Springs, NC, 27540
800-520-7471 (voice) 919-362-4765 (fax)
919-303-6389 (voice) www.ofminc.com
support@ofminc.com

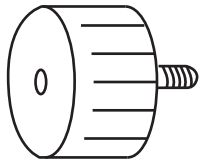
Model DK-2 Drafting Kit Assembly

Parts Listing

A
Circular Foot Rest
1 Unit



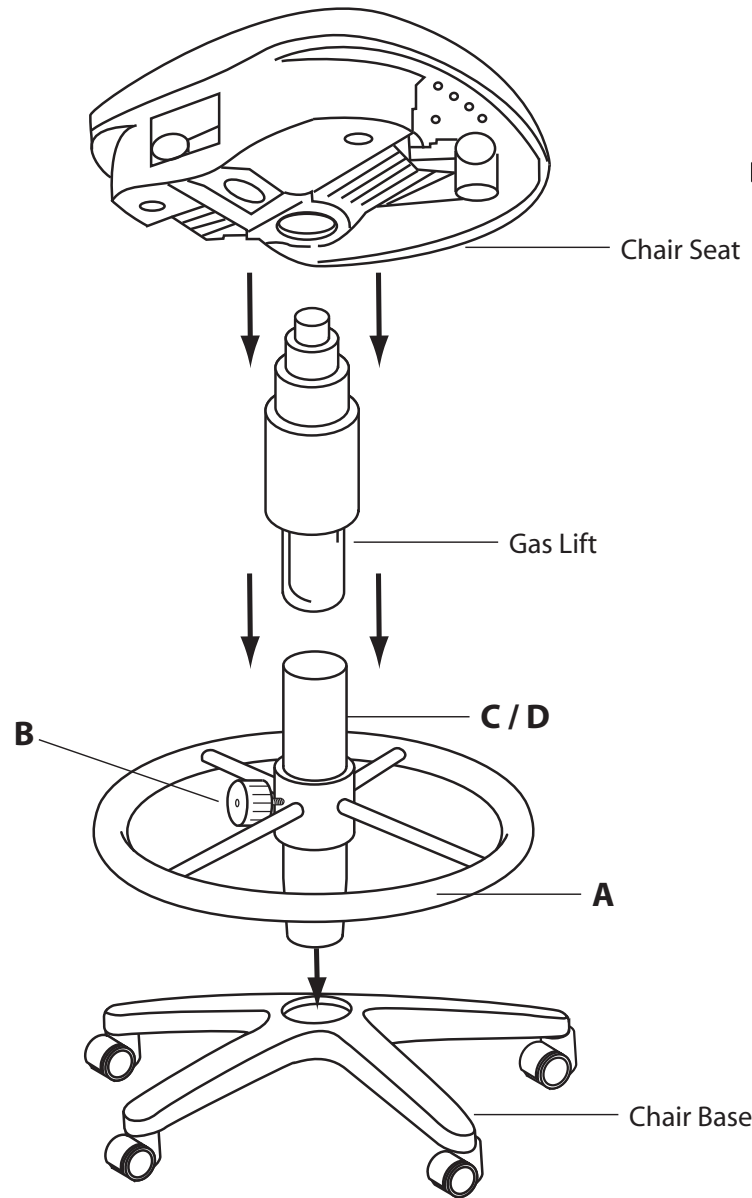
B
Tension Knob
1 Unit



C
9" Extension Tube
1 Unit



D
12" Extension Tube
1 Unit



Assembly Instructions



Please read all instructions before assembly.
Prior to assembly, select only one Extension Tube for desired Height

9" Extension Tube will change seat height from 26.75"-30.25"
12" Extension Tube will change seat height from 29.75-33.25"

- Step 1:** Slide the Circular Foot Rest (A) over the smaller tapered end of your chosen Extension Tube (C / D).
 - Step 2:** Screw in Tension Knob (B) and tighten to lock Foot Rest (A).
 - Step 3:** Place the tapered end of Extension Tube (C / D) into your Chair Base.
 - Step 4:** Insert bottom of Gas Lift Cylinder into the top end of the Extension Tube (C / D).
 - Step 5:** Place the Chair Seat onto the Gas Lift by inserting top of Gas Lift into the hole in the Seat Mechanism.
 - Step 6:** Press down firmly to secure the chair.
- Note:** Save the left over extension tube for future use.

ofm
Furniture For The Real Office™

161 Tradition Trail Holly Springs, NC, 27540
800-520-7471 (voice) 919-362-4765 (fax)
919- 303-6389 (voice) www.ofmnc.com
support@ofmnc.com 04.06.2010