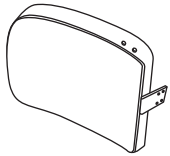


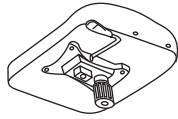
# Model 800-L Big & Tall Leather Chair

## Parts Listing

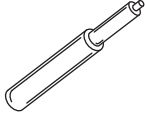
**A**  
Chair Back  
1 Unit



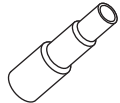
**B**  
Chair Seat  
1 Unit



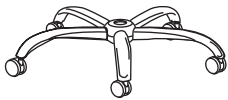
**C**  
Gas Lift  
1 Unit



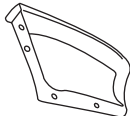
**D**  
Telescopic Bellows  
1 Unit



**E**  
Chair Base with Casters  
1 Unit



**F**  
Chair Arms  
2 Units



**G**  
8x30mm Screw  
4 Units



**H**  
Toothed Washer  
4 Units



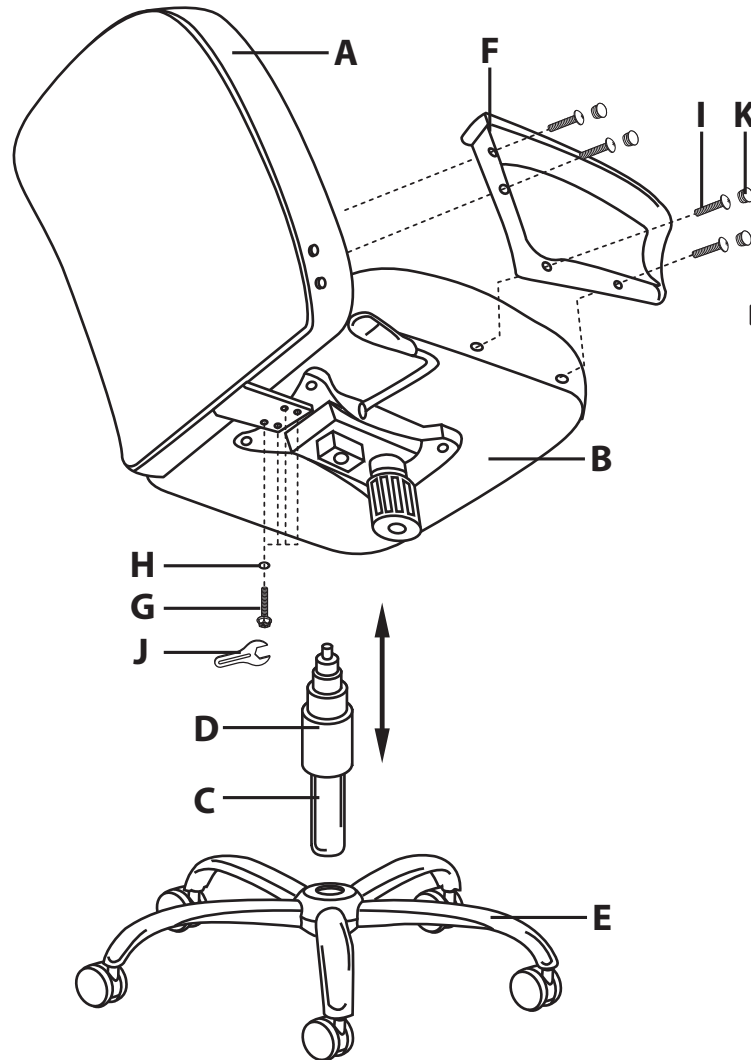
**I**  
Arm Screw  
8 Units



**J**  
Wrench  
1 Unit



**K**  
Arm Caps  
8 Units



## Assembly Instructions



**Tools Needed: Phillips Head Screwdriver**  
*Please read all instructions before assembly.*

- Step 1:** Insert Gas Lift (C) into hole in the center of Chair Base (E) and cover with Bellows (D).
- Step 2:** Attach Chair Seat (B) to Chair Base (E) by inserting the tip of the Gas Lift (C) into the hole in the center of the seat mechanism. Carefully sit on Chair Seat (B) to make sure the Gas Lift (C) is secure and properly inserted into the base.
- Step 3:** Attach Chair Back (A) to Chair Seat (B) by inserting 8x30mm Screws (G) and Washers (H) through the holes in the support bar on the Back (A) and into the Chair Seat (B), using Wrench (J).
- Step 4:** Attach Chair Arms (F) to the assembled chair by inserting Arm Screws (I) through the holes in the Arms (F) and into the pre-drilled holes in the Chair Seat (B) and Chair Back (A). Do not tighten screws until all screws have been inserted.
- Step 5:** Cover screw holes in the Arms (F) using the Plastic Arm Caps (K). Press in firmly to secure.
- Step 6:** Operate the gas lift lever to be sure the unit is working properly.

**WEIGHT CAPACITY: 400 lbs.**

### Assembly Notes:

During assembly, hand tighten screw only when all screws are in place, you may then tighten all screws completely.

### CAUTION:

1. Do not use this chair as a step ladder.
2. Check for loose screws and tighten them every 6 months.

**ofm**  
Furniture For The Real Office™

161 Tradition Trail Holly Springs, NC, 27540  
800-520-7471 (voice) 919-362-4765 (fax)  
919-303-6389 (voice) www.ofminc.com  
support@ofminc.com