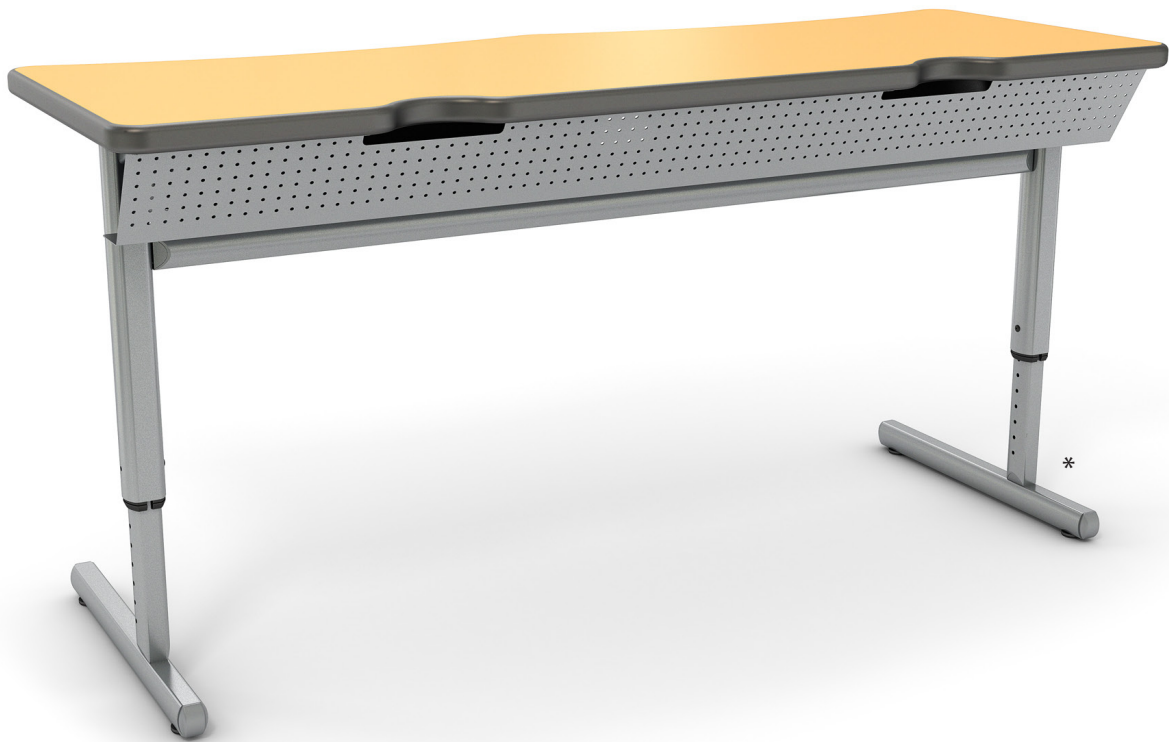




# Compute-IT<sup>\*</sup>

table solutions



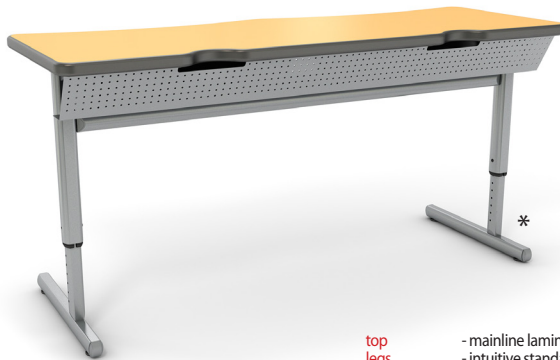
\* The systems comprising the Information Commons, Intuitive IC Shelving, Intuitive IC Mobile Shelving and Extendible Leg Assemblies are patent pending.

# Compute-IT

## product overview

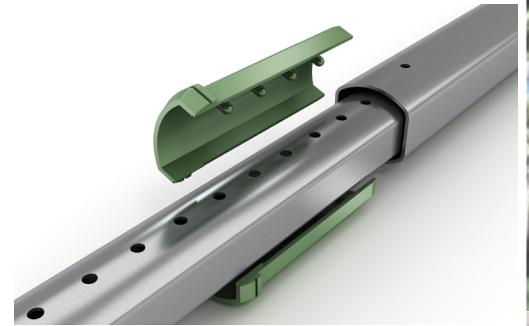
1 1/4" HPL laminate with top with 3/8" t-mold bumper edge available in black or graphite. Single post upper leg is 14 gauge steel tube with 1/4" steel u-channel cross bar weldment. Lower leg is 16 gauge steel with perforated 1/4" holes every inch. Holes allow for patent pending height adjustment bezel sleeve that contacts leg insert at 8 contact points. Milled aluminum end cap mechanism is held in place with the insertion of the floor glide. Computer lab table includes 18 gauge perforated steel wire manager that pivots for wire access.

## color options



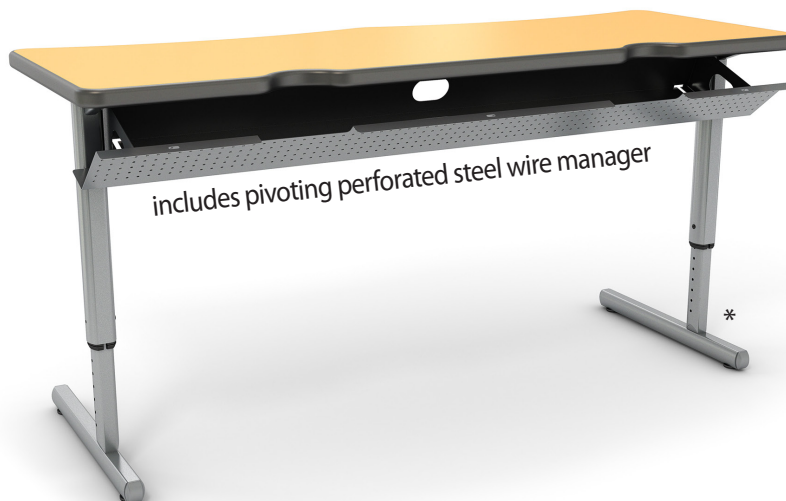
top - mainline laminate colors\*\*  
legs - intuitive standard paint colors\*\*  
accent - intuitive premium paint colors\*\*  
bumper edge - black or titanium\*\*

## adjustable leg \*



patent pending height adjustment bezel sleeve with 11" range

## dimensions



includes pivoting perforated steel wire manager

COMPUTE-IT-2229  
W 29" D 22" H 23.5-34.5"

COMPUTE-IT-2429  
W 29" D 24" H 23.5-34.5"

COMPUTE-IT-2260  
W 60" D 22" H 23.5-34.5"

COMPUTE-IT-2460  
W 60" D 24" H 23.5-34.5"