

DETAIL B
SCALE 1 : 1

SHELF

BEAM

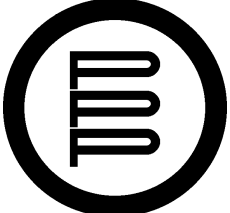
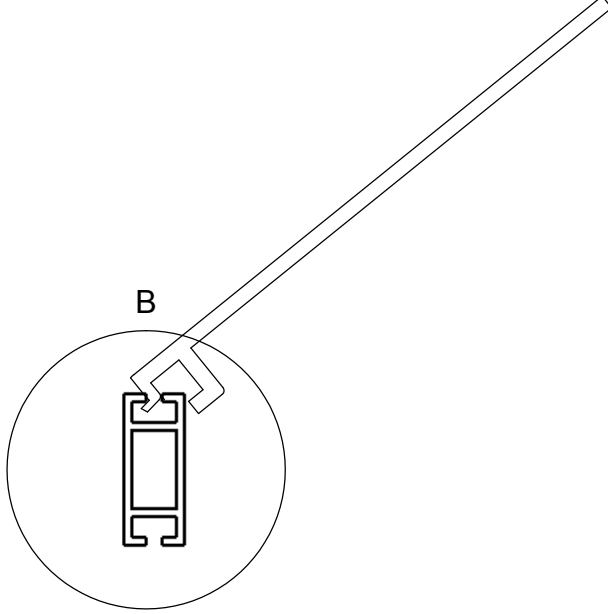
Installation Instructions

Product name ALUMINUM SHELF
Model SA48

TOOLS NEEDED
 - 1/4" Phillips Screw driver

HARDWARE INCLUDED
 - 4 pcs. drywall screws plus insert and hole covers
 - 2-end caps for beam
 - 2-end caps for shelf

INSTALLATION STEPS
 1. Set and level aluminum beam at desired height on the wall. Mark holes through the beam.
 2. Mount beam to wall with supplied fasteners.
 3. Install aluminum shelf by clipping top flange of shelf into slot on top of beam .
 4. Insert end caps and hole covers.



17929 S. Susana Road, Compton, CA 90224
Phone 800.496.0204 Phone 310.639.0390 Fax 310.639.6013
 www.peterpepper.com e-mail: info@peterpepper.com