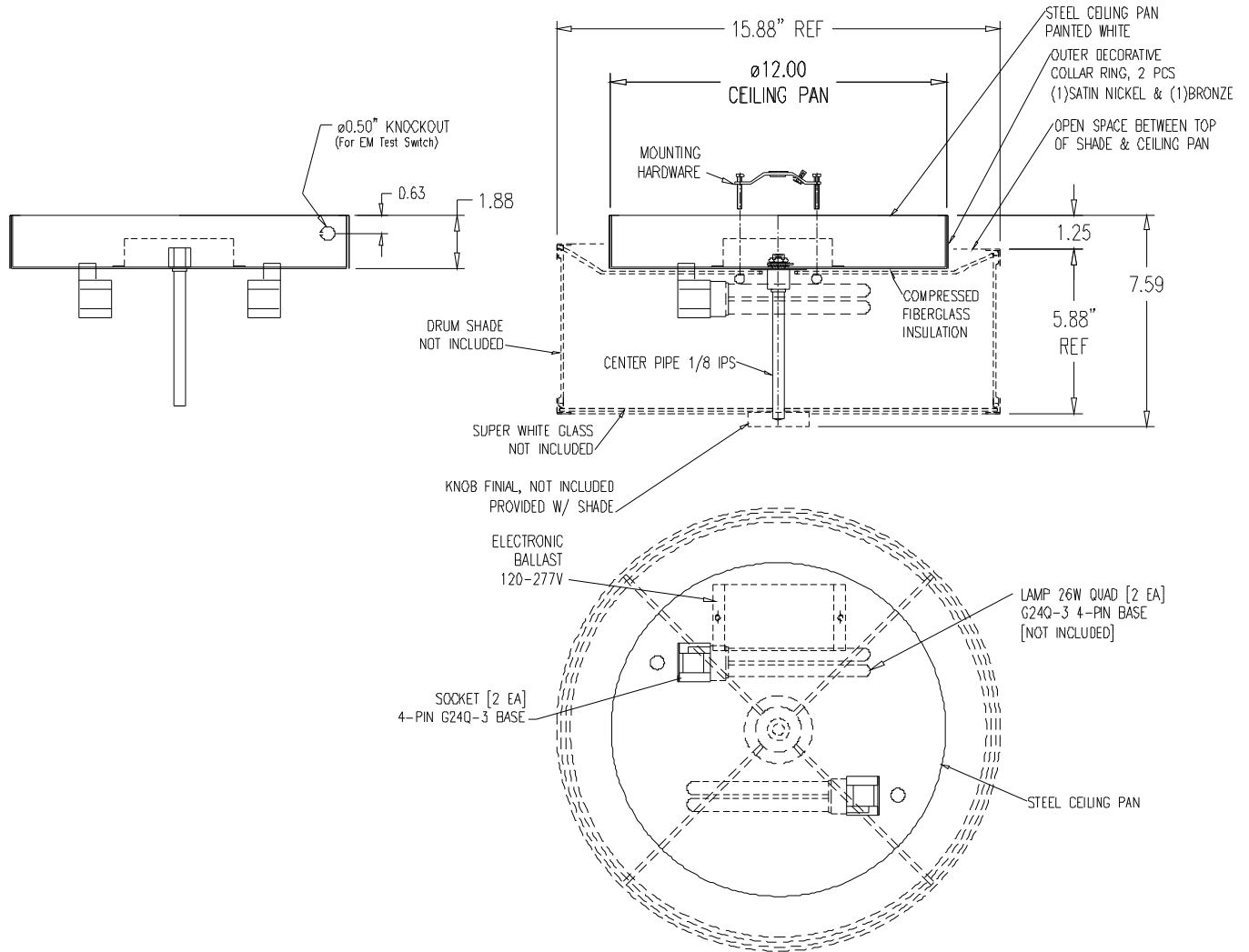


CFL CEILING PAN



CONSTRUCTION: Steel Pan

ELECTRICAL: Electronic 120/277V ballast standard. Uses 2 x 26W G24q-3 CFL. UL Approved for damp location use

FINISHES: Pan ships with both satin nickel and bronze collars. Select collar that coordinates with selected shade

MOUNTING: Mounts to octagon junction box or 4x4 junction box with round plaster adapter

OPTIONS: Dimming and emergency battery available, consult factory. Compatible with shades 1140/ 1141/1142. Specify shade separately