**PURCHASERS GUARANTEE**

Please retain these installation instructions as important information concerning the cleaning and the maintenance is detailed within.

The product guarantee number is printed on the last page.

INSTALLATION INSTRUCTIONS

simpsons 

IMPORTANT

Please read these instructions carefully before starting installation and keep in a safe place for future reference.

Check the contents of the pack carefully before installation. Simpsons will not be held responsible for any de-fit / re-fit costs where faulty product has been fitted.

If any fault is found with materials or workmanship, it must be reported immediately to the manufacturer. Remedial action will be taken, based on information received, on condition that: 1. Full details are supplied to the manufacturer; 2. The screen has not been modified or tampered with; 3. The manufacturer is informed of any damage/shortages prior to installation.

We do not accept responsibility for any problems that may occur through incorrect installation.

The success of the installation and operation of any bath screen is, of course, dependant on the squareness, alignment and construction of the walls to which fixing is to be carried out.

The hinged bath screen is designed to open outwards only.

VERY IMPORTANT

You must complete all tiling and grouting, and the bath **MUST** be fully sealed to the tiles before installation. If you do not fit the bath screen onto a tiled surface, or seal the tiles to the bath before installation, water may soak into the wall behind the wall channel.

Blue protective plastic film has been placed on the metal profiles. This film should not be removed until installation is complete. This is to protect the plating finish and prevent profiles being scratched during fitting.

A pair of gloves are also provided to wear during installation, this will reduce oils and silicon stains being transferred during installation.



INSTALLATION - Advice and safety

This bath screen is reversible for left or right hand fitting, simply turn the wall channel and hinge stile up side down.

The installation instructions are based on typical use and conditions.

These hints have been prepared for your guidance, you must exercise due care at all times.

It is recommended that 2 people carry out the installation of this bath screen.

Handle glass with care. Although the glass supplied is toughened safety glass (to EN12150), impacts can damage both the glass and the frame.

Warning! Please check for any hidden pipes or cables before drilling holes in the wall.

To stop the drill bit slipping, masking tape can be applied to the tiles when preparing the holes.

When using power tools always follow the manufacturers user instructions. Leave the silicone sealant to dry for 24 hours before using the screen.

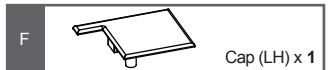
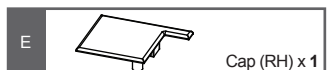
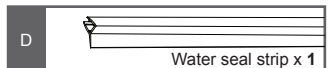
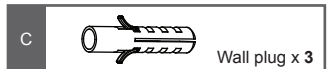
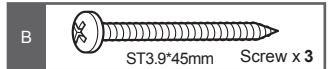
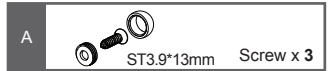
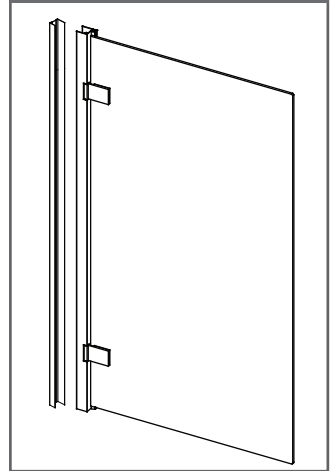
CARE AND CLEANING

Do not use solvents or abrasive materials or chemicals to clean the enclosure.

Only clean using soapy water and a soft cloth, rinse thoroughly afterwards.

CONTENTS

BATH SCREEN

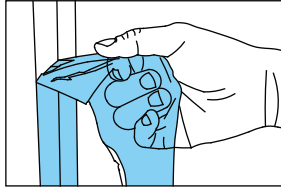
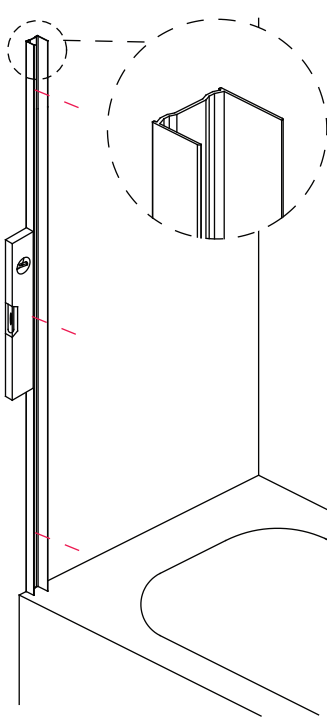


Tools and equipment needed

Drill, 6mm Masonry drill bit, 2.8mm General drill bit, Phillips screwdriver, Spirit level, Pencil, Scissors, Silicone sealant.

BATH SCREEN

Step 1

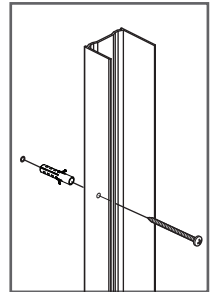
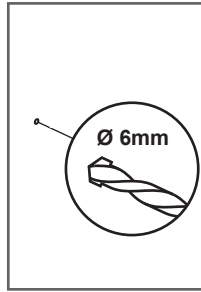
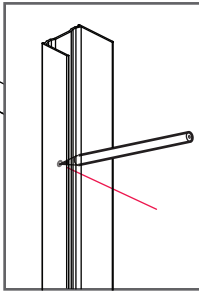


The film on wall profile should be removed before installation.

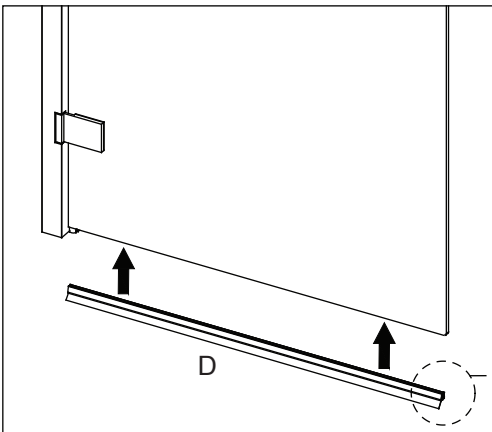
The bath screen should be positioned centrally or slightly toward the inside of the bath rim, as shown. Place the wall channel in position on the bath and against the wall, use a spirit level to ensure it is vertical and mark all 3 fixing holes onto the walls.

Drill holes in the positions marked using a 6mm masonry drill bit. Insert wall plugs (C) into all of the holes (beyond the thickness of the tile). Fix the wall channel to the wall using screws (B).

Note: Inject silicone sealant into the holes before inserting the screws to seal the holes.

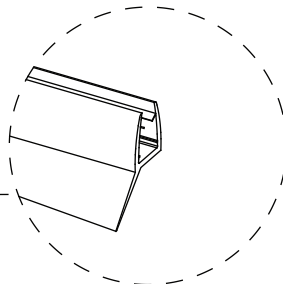


Step 2

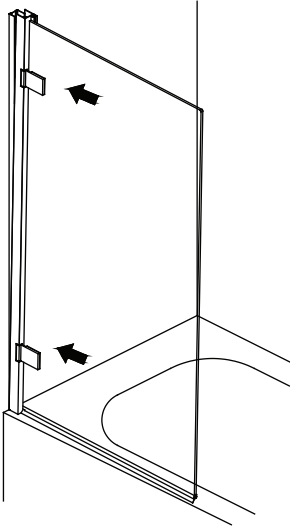


Push the water seal strip (D) fit onto the bottom of the bath screen.

Ensure the seal is flush with the back edge of the glass. If necessary, trim the seal using scissors to get a good fit against the black seal.



Step 3

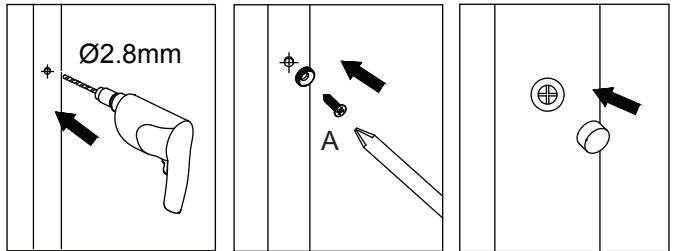


With help, push the bath screen fully onto the wall channel.

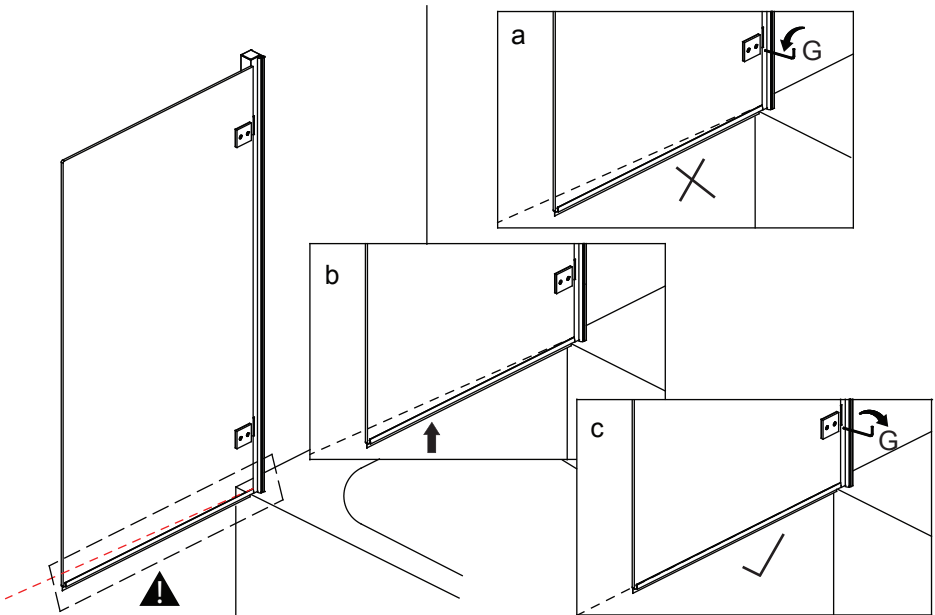
Check that the fitted water seal strip brushes the edge of the bath evenly along its length. From inside, drill 3 holes through the wall channel into the bath guard (in the marked positions) using a 2.8mm drill bit.

Note: Stop drilling as soon as you feel the drill break through the first layers of aluminium.

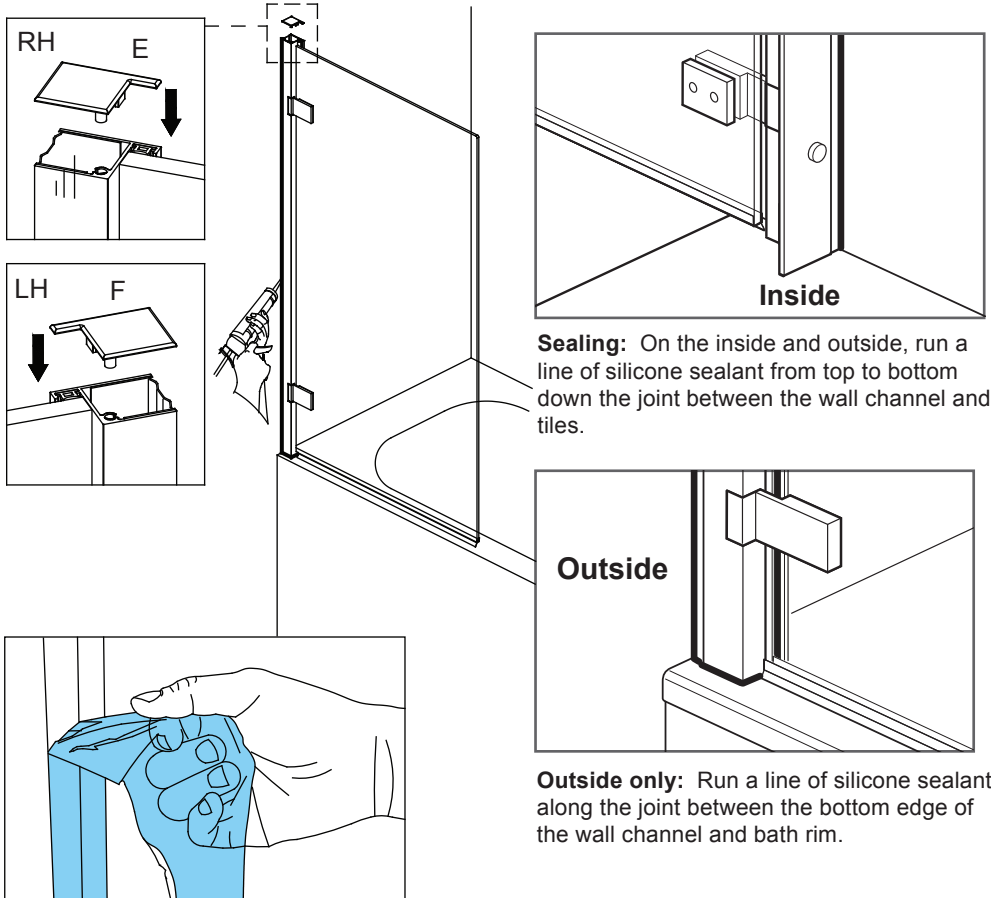
Fix using screws (A).



Step 4



Step 5



Sealing: On the inside and outside, run a line of silicone sealant from top to bottom down the joint between the wall channel and tiles.

Outside only: Run a line of silicone sealant along the joint between the bottom edge of the wall channel and bath rim.

Remove protecting film

Blue protective plastic film on profiles are used to protect the plating finish to avoid scratching during installation.

Please remove them before sealing.

PURCHASERS GUARANTEE

The product guarantee number applies to the purchaser and is non transferrable.

Guarantee No.

simpsons ✕

For any further information please contact
Simpsons on: **0845 873 5808**

Or visit our web-site at:
www.simpsons-enclosures.co.uk

The manufacturer reserves the right to make
technical modifications without prior notice.