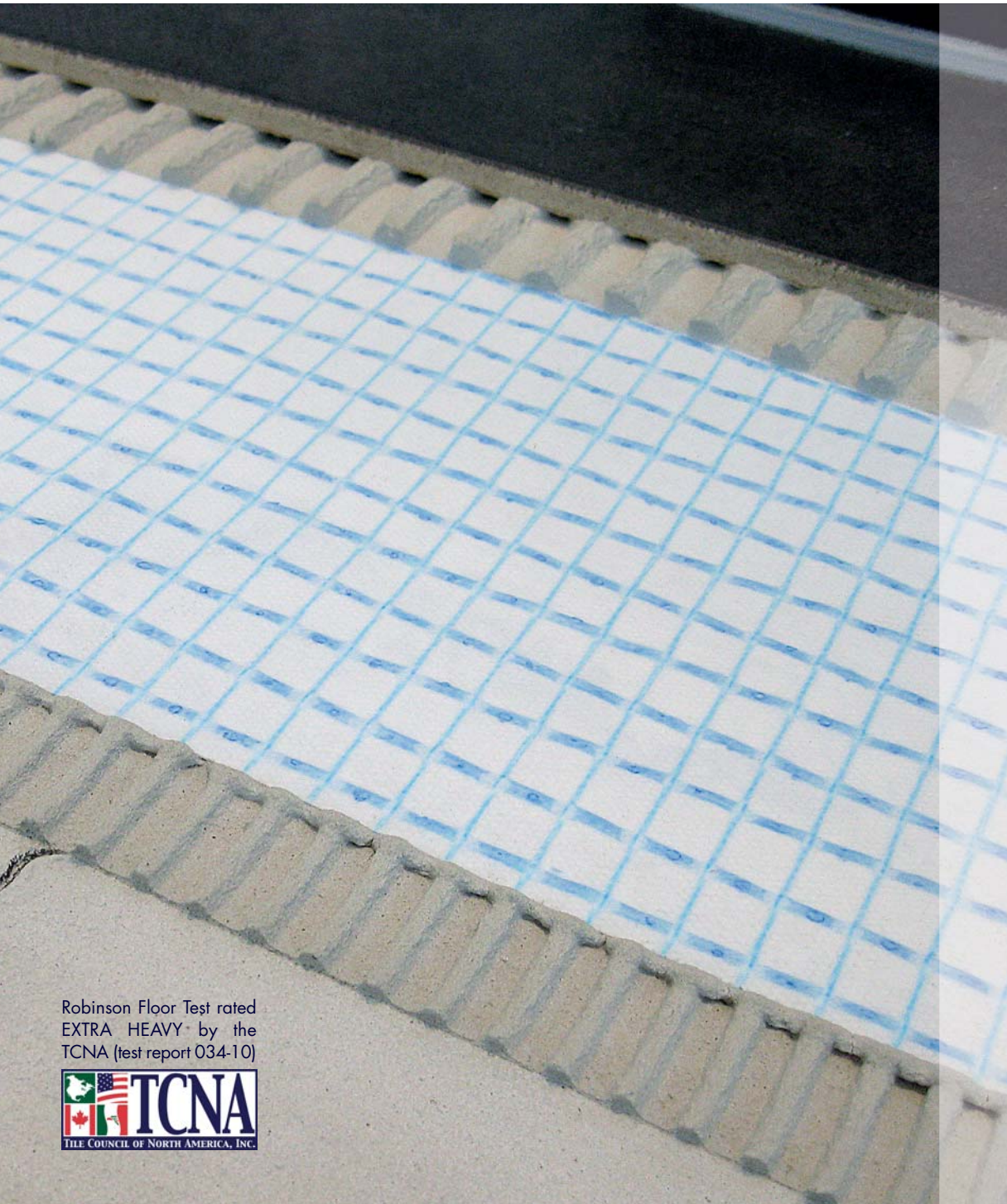
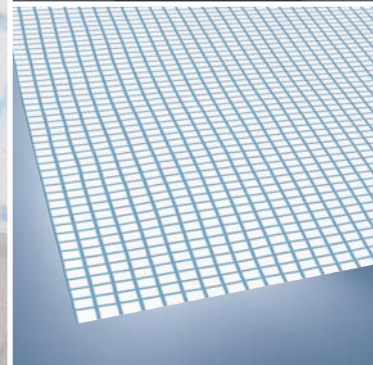
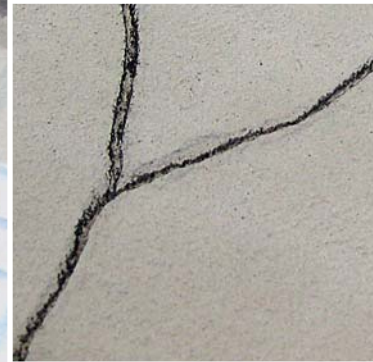




FUNCTION. DESIGN. QUALITY.



Robinson Floor Test rated
EXTRA HEAVY by the
TCNA (test report 034-10)

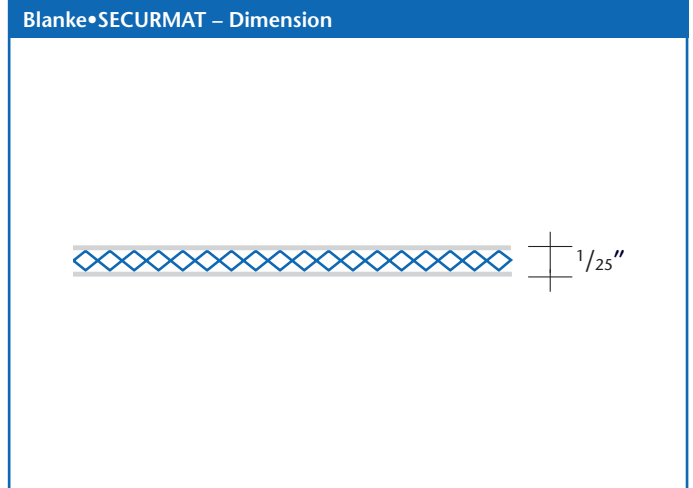
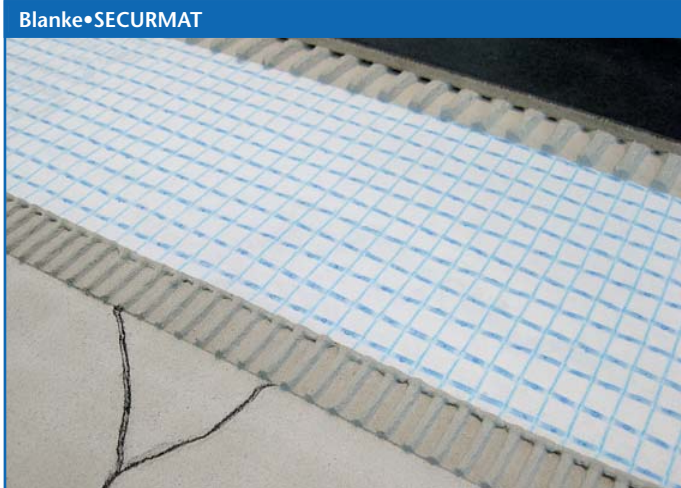


Blanke • SECURMAT

- ▶ Tear proof, thin, rolled uncoupling underlayment
- ▶ Low elevation
- ▶ Easy to cut and install
- ▶ Uses less thinset than other uncoupling products
- ▶ Provides uncoupling crack isolation properties



FUNCTION. DESIGN. QUALITY.



Product features:

Blanke•SECURMAT is a tear-proof rolled uncoupling underlayment that provides a secure bonding surface for ceramic tile and natural stone installations on both interior floors and walls. The Blanke•SECURMAT also provides crack isolation protection that helps prevent damage to the tile covering caused by lateral substrate movement. This light weight, easy-to-install underlayment features low elevation and requires less thinset than other rolled uncoupling products. The Blanke•SECURMAT is an ideal underlayment for both new installations and for renovations over existing floor coverings.

- Low elevation
- Easy to cut and install
- Uses less thinset than other uncoupling products
- Provides uncoupling crack isolation properties
- Approved for wood and cement substrates
- Approved for use of modified thinset with porcelain tile
- Approved for all tile sizes including mosaics

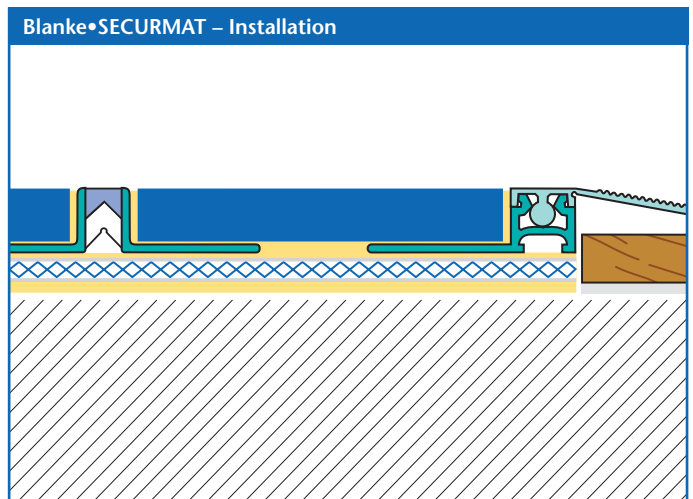
Test Results – TCNA-034-10:

The installation completed thirteen cycles with no evidence of damage to the tiles or grout joints. At the completion of cycle fourteen (steel wheels, three hundred pounds per wheel), there was one spalled grout joint. All evaluation criteria were based on 8 tiles and 8 grout joints in the wheel path of the Robinson-Type Floor Tester.



Conclusion:

In accordance with the Performance-Level Requirement Guide of the 2010 TCA Handbook for Ceramic Tile Installation, page 15, the installation is classified as "EXTRA HEAVY" for "extra heavy and high-impact use in food plants, dairies, breweries, and kitchens".



Blanke•SECURMAT – Technical data	
Material:	Reinforced fiberglass mesh embedded between two layers of polyester fabric
Thickness:	0.9 mm (nominal 1/25")
Size:	1 roll 3.28' width x 164' length (1 m x 50 m) 538 sq. ft.
Part Number:	758-904

For more information on technical data and installation:
www.blankecorp.com