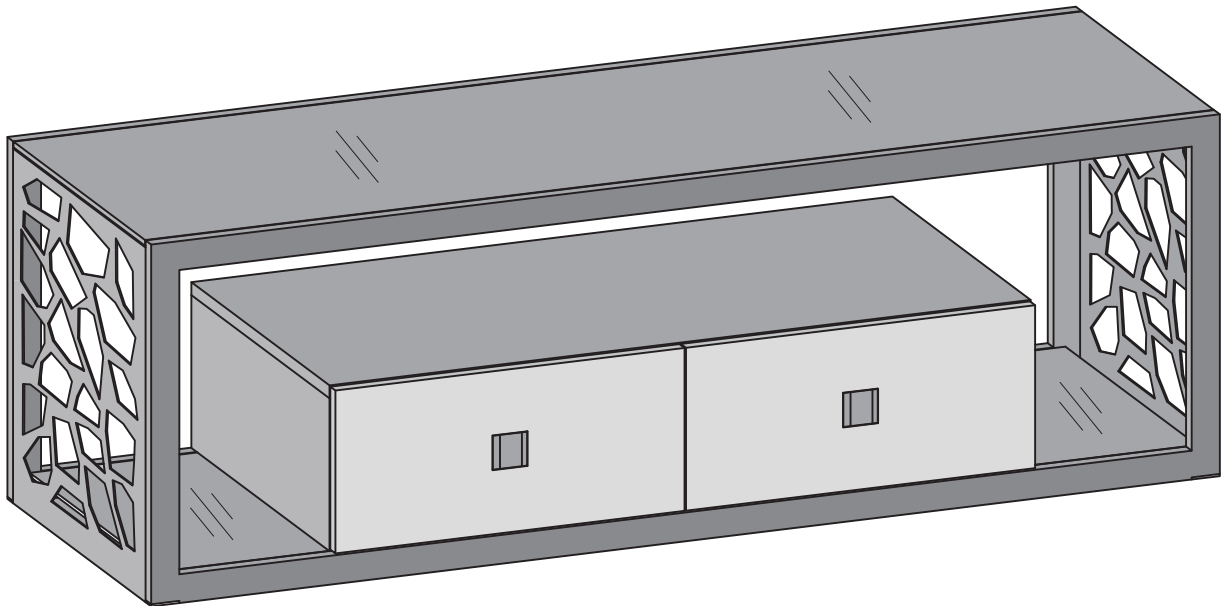


W Walker
E Edison
furniture company

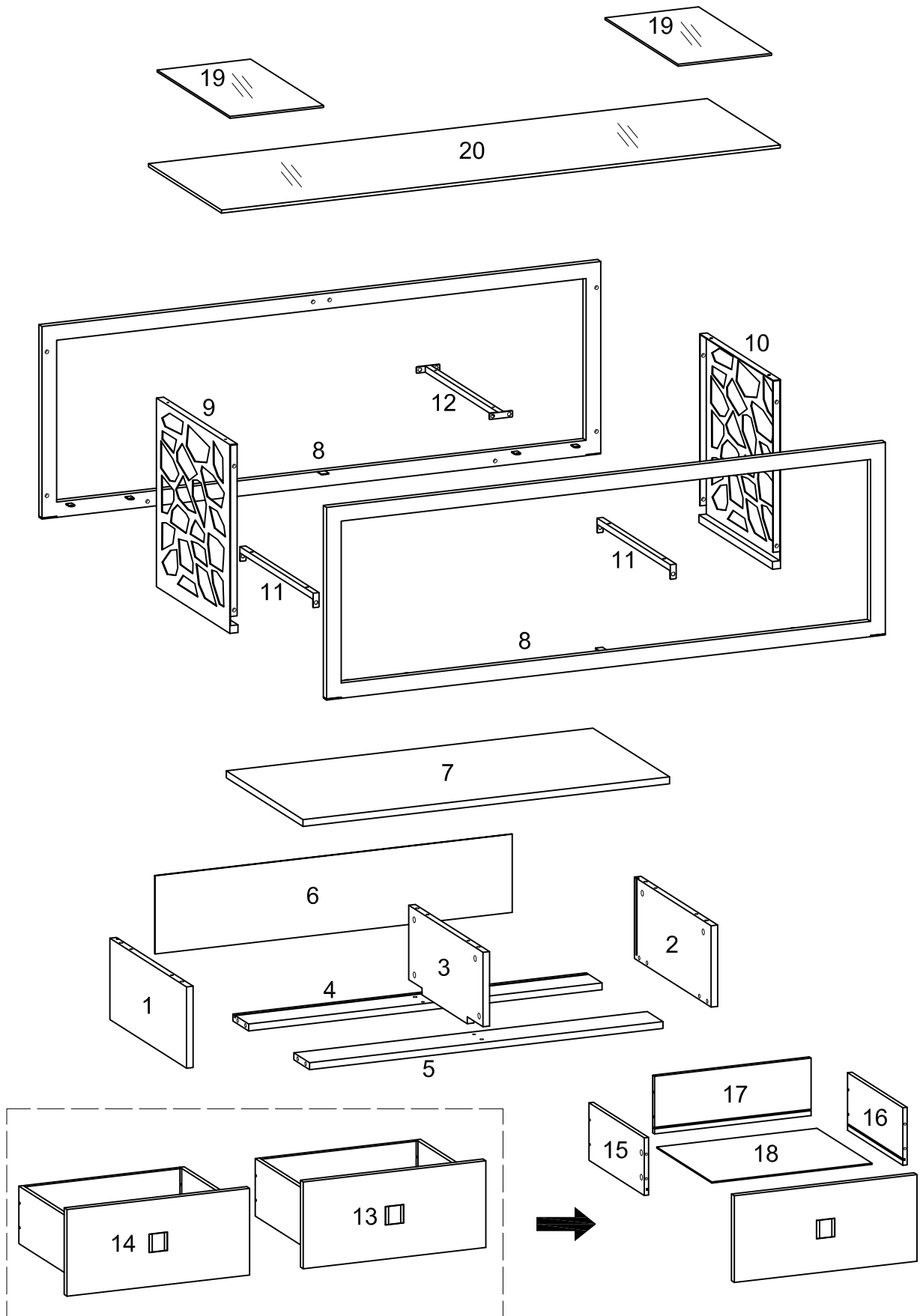
Item # :V60MSC
Assembly Instructions





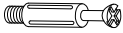


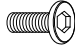
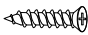
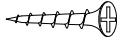






For our most current instructions, to request missing, lost or broken parts, or for any other Customer Service issues, please visit our website at www.walkeredison.com or call us at 877-207-5906.

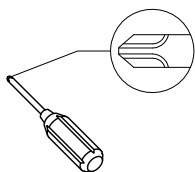
Revised 04/2013

Parts List



Hardware List

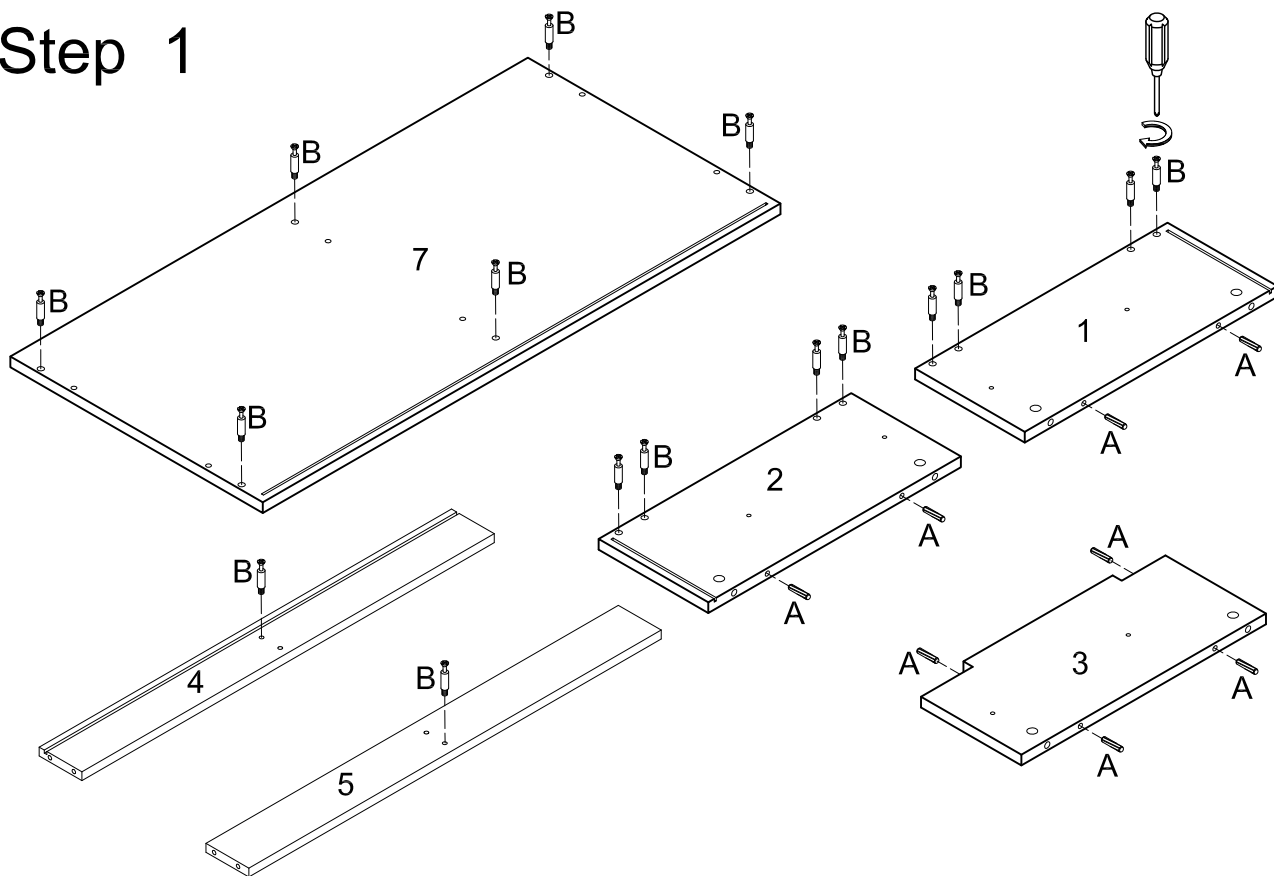
A		Ø8*30mm	Wooden dowel	8 pcs
B			Cam bolt	16 pcs
C			Cam bolt	8 pcs
D			Large cam lock	16 pcs
E			Small cam lock	8 pcs
F		Ø1/4"*5/8"	Bolt	16 pcs
G			Screw	16 pcs
H			Screw	12 pcs
J		Ø16	Washer	16 pcs
K			Left drawer track	4 pcs
L			Right drawer track	4 pcs
M			Desk feet	6 pcs
N			Rubber cup	14 pcs
P		M4(mm)	Allen wrench	1 pc



Philips head screwdriver required for assembly
(not included)

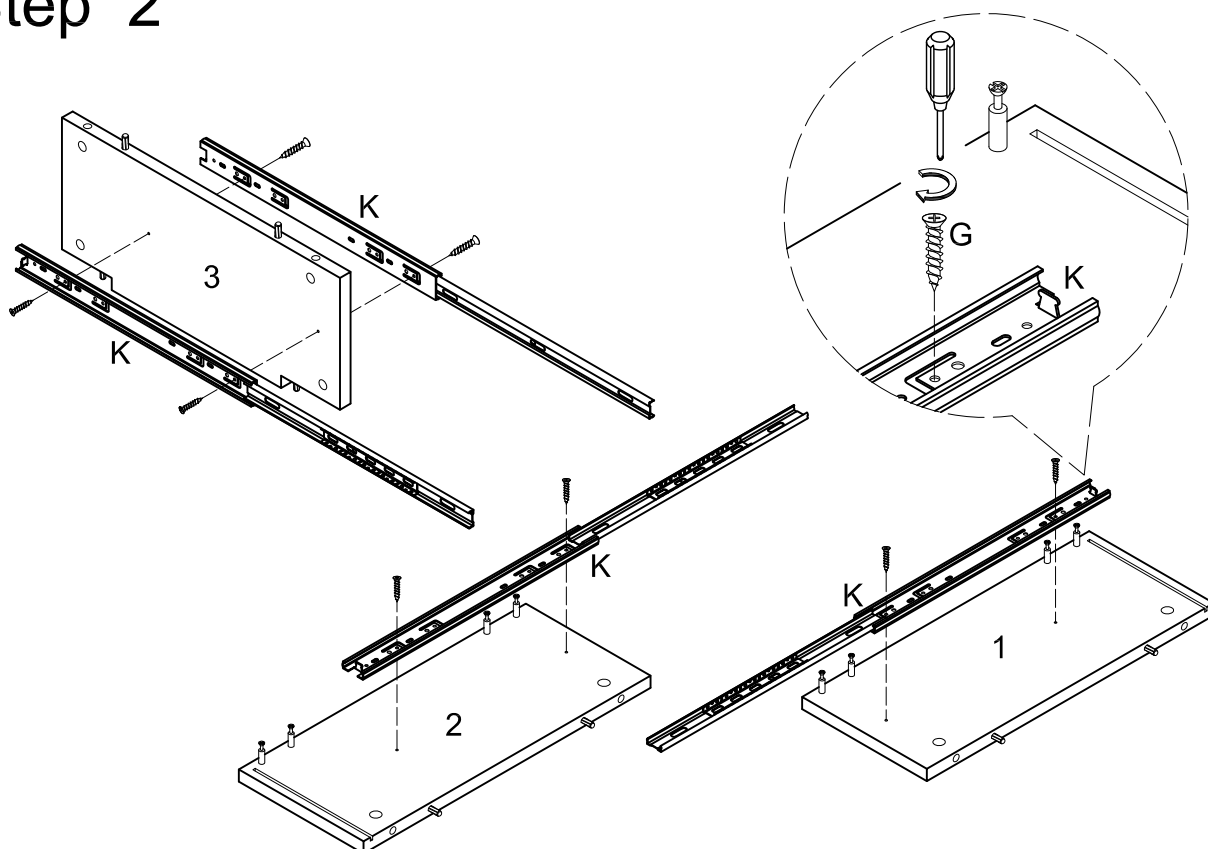
*The hardware quantities listed above are required for proper assembly.
Some extra hardware may also have been included.*

Step 1



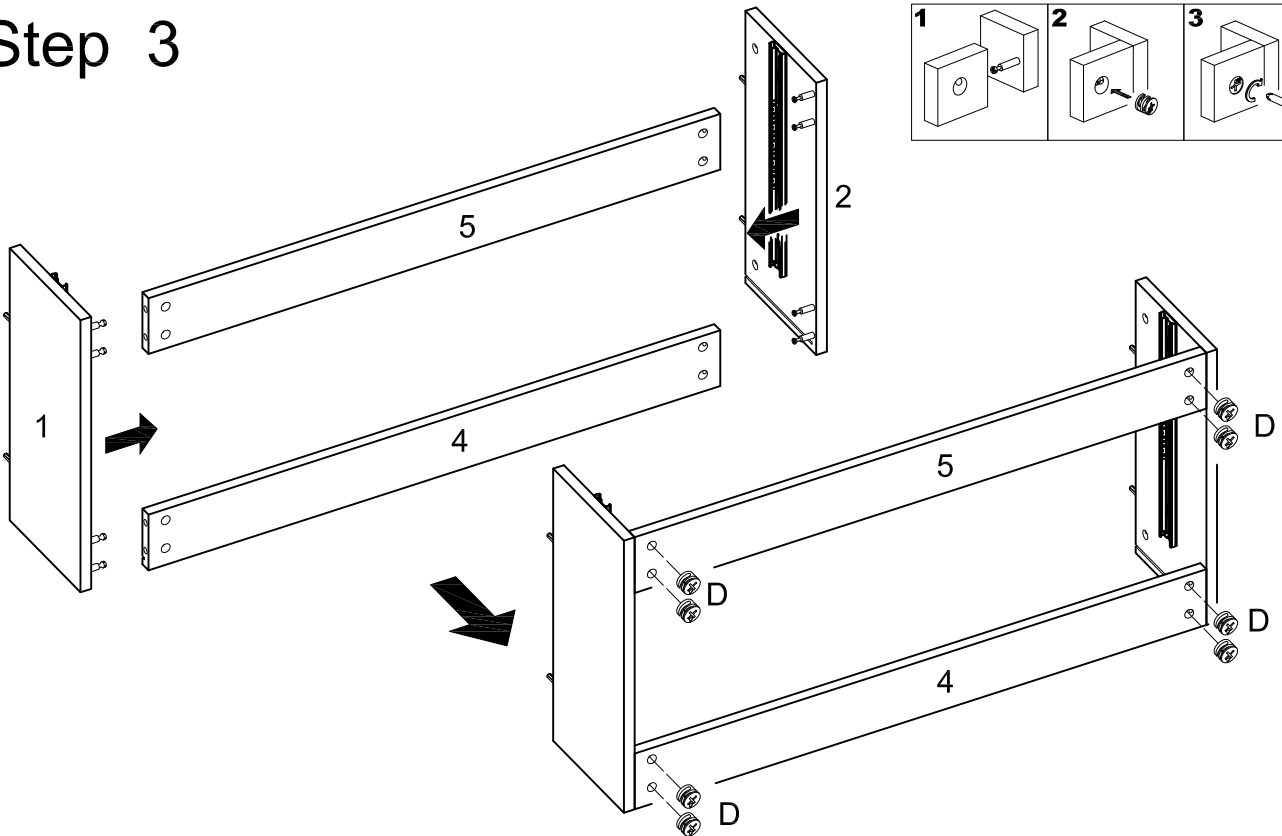
Screw cam bolts (B) into side panels (1,2) , strengthen bars (4,5) and top panel (7).
Insert dowels (A) into side panels (1,2) and middle side panel (3).

Step 2



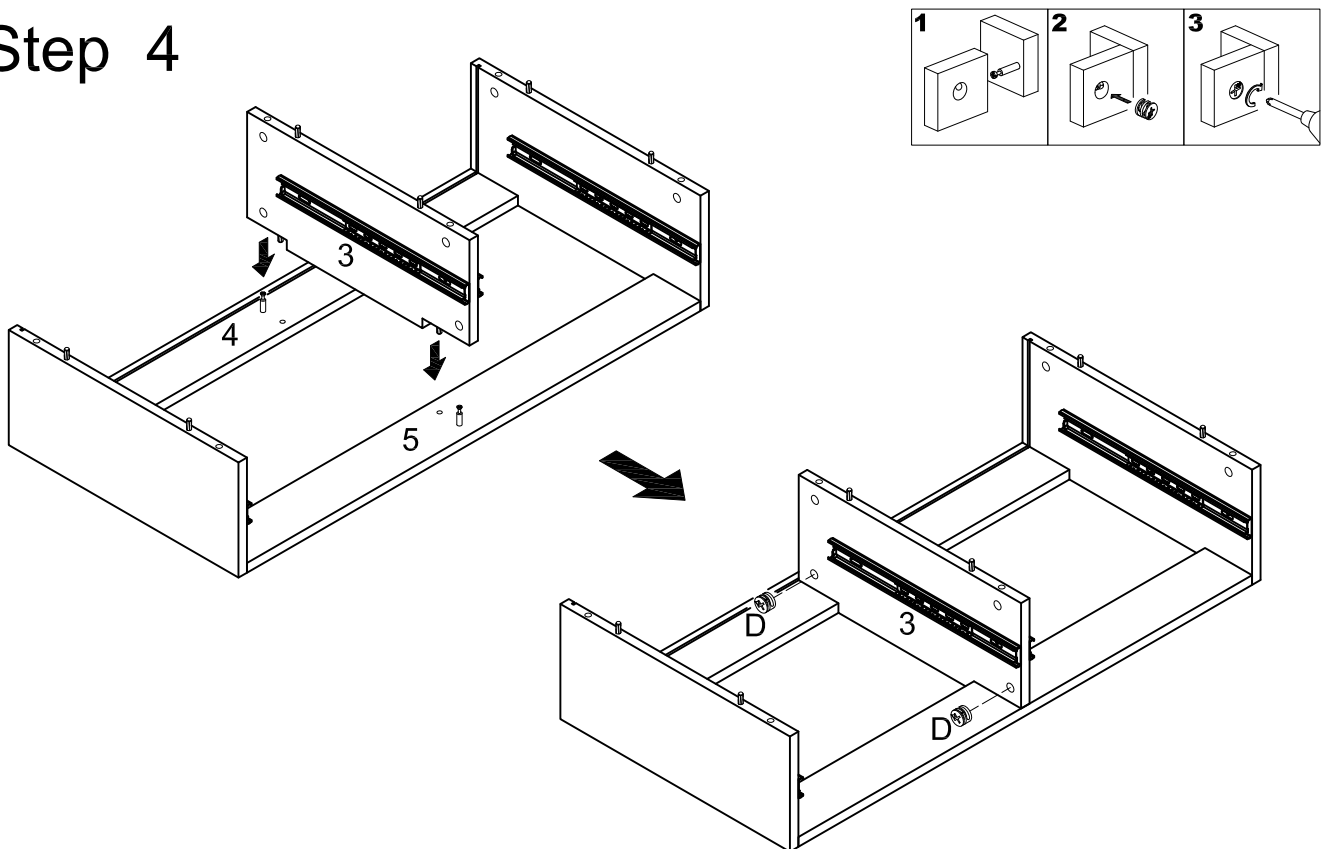
Attach left drawer tracks (K) to side panels (1,2,3) using screws (G). Tighten screws (G) with a screwdriver.

Step 3



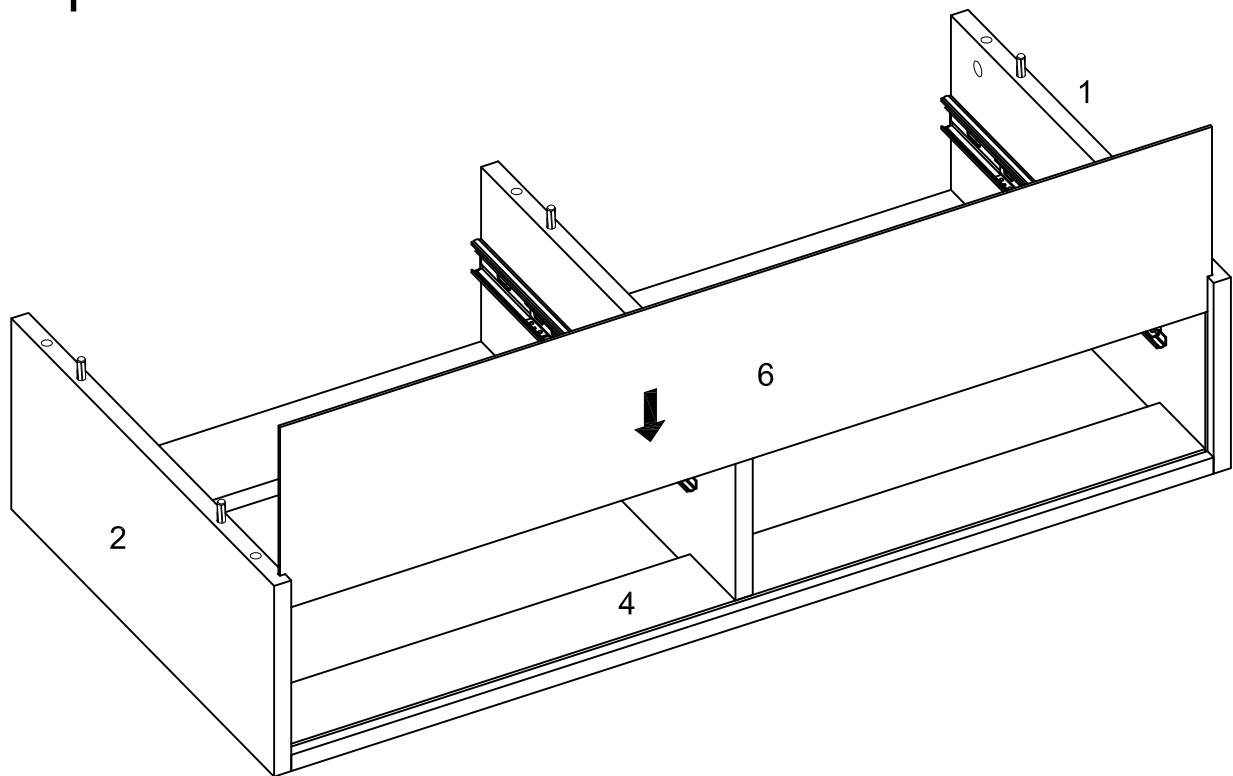
Attach side panels (1,2) to strengthen bars (4,5) using large cam locks (D). Tighten large cam locks (D) with a screwdriver.

Step 4



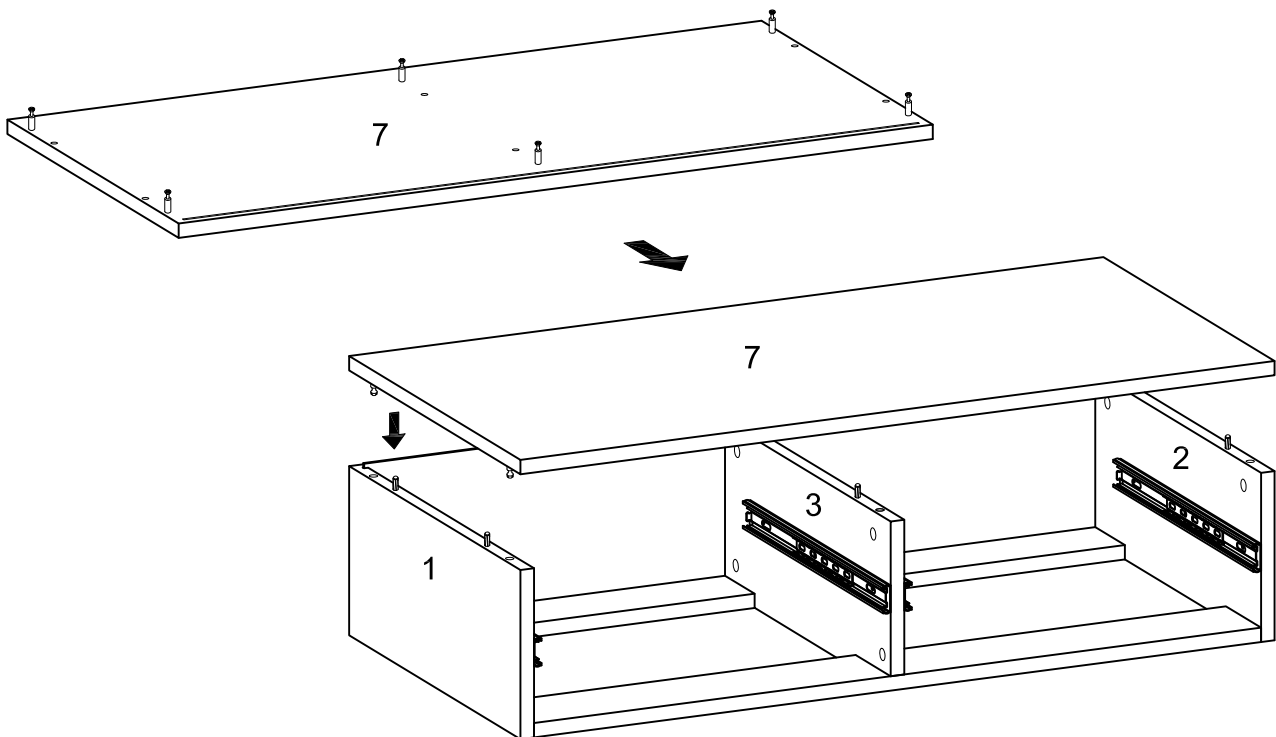
Attach middle side panel (3) to strengthen bars (4,5) using large cam locks (D). Tighten large cam locks (D) with a screwdriver.

Step 5



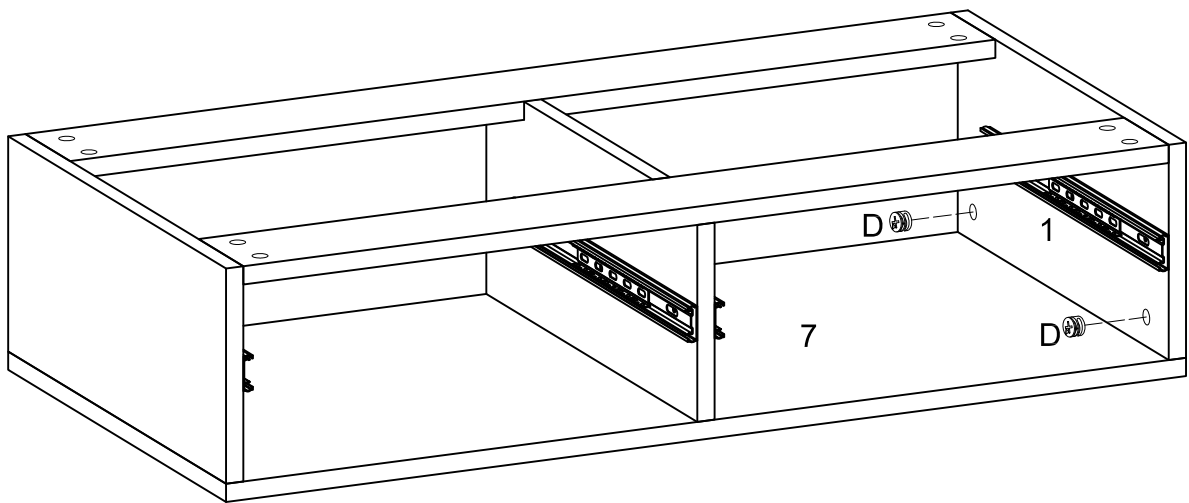
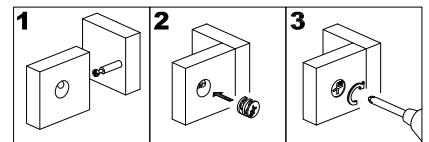
Slide back panel (6) into the stand assembly.

Step 6



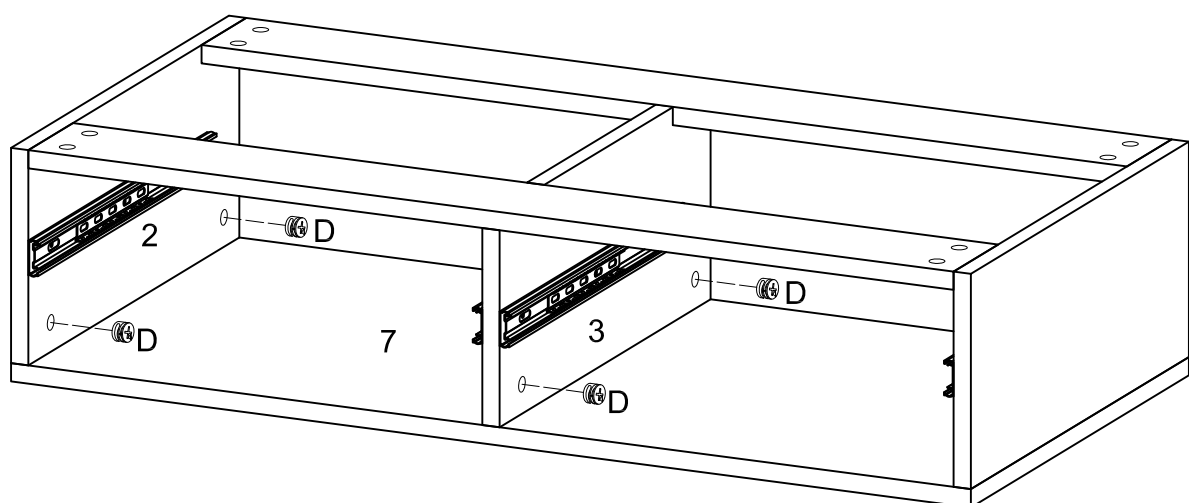
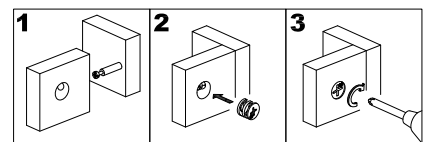
Attach top panel (7) to the stand assembly using cam bolts and dowels as guides.

Step 7



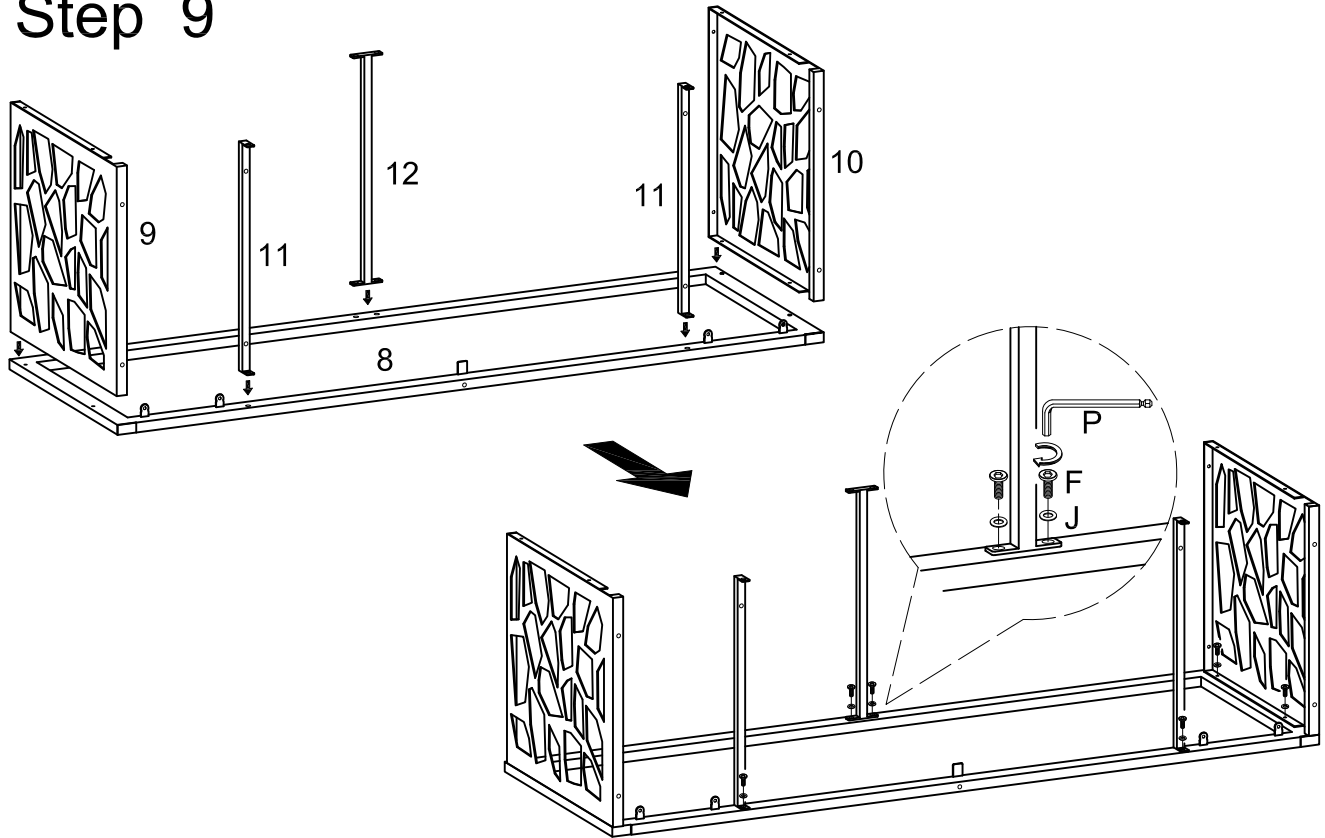
Attach left side panel (1) to top panel (7) using large cam locks (D). Tighten large cam locks (D) with a screwdriver.

Step 8



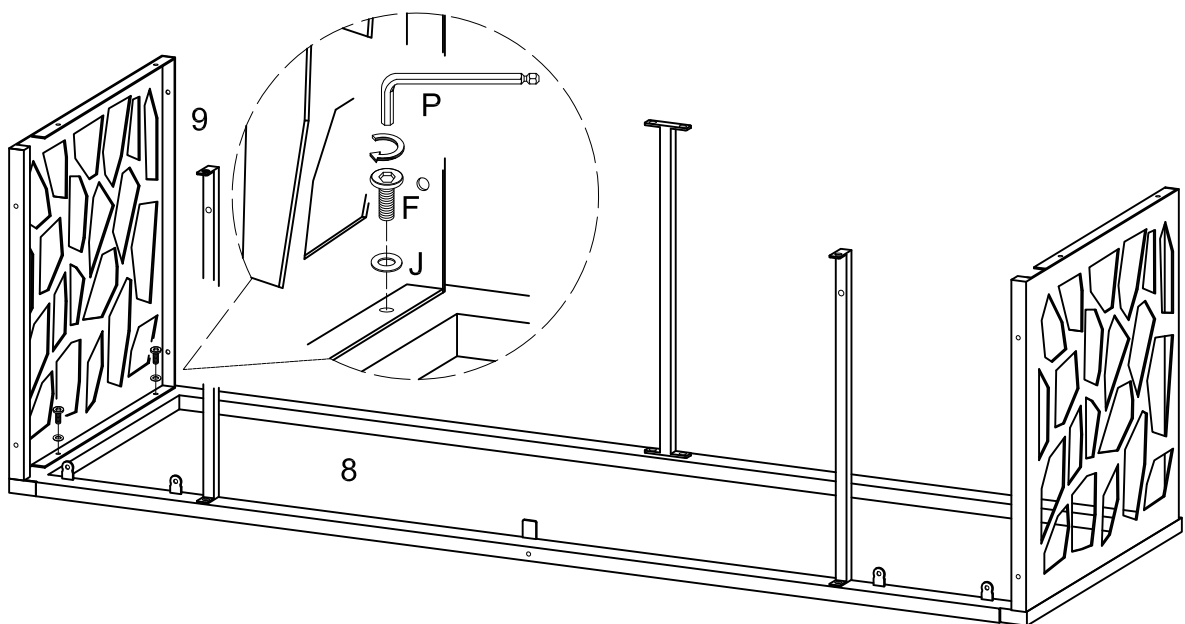
Attach right side panel (2) and middle side panel (3) to top panel (7) using large cam locks (D). Tighten large cam locks (D) with a screwdriver.

Step 9



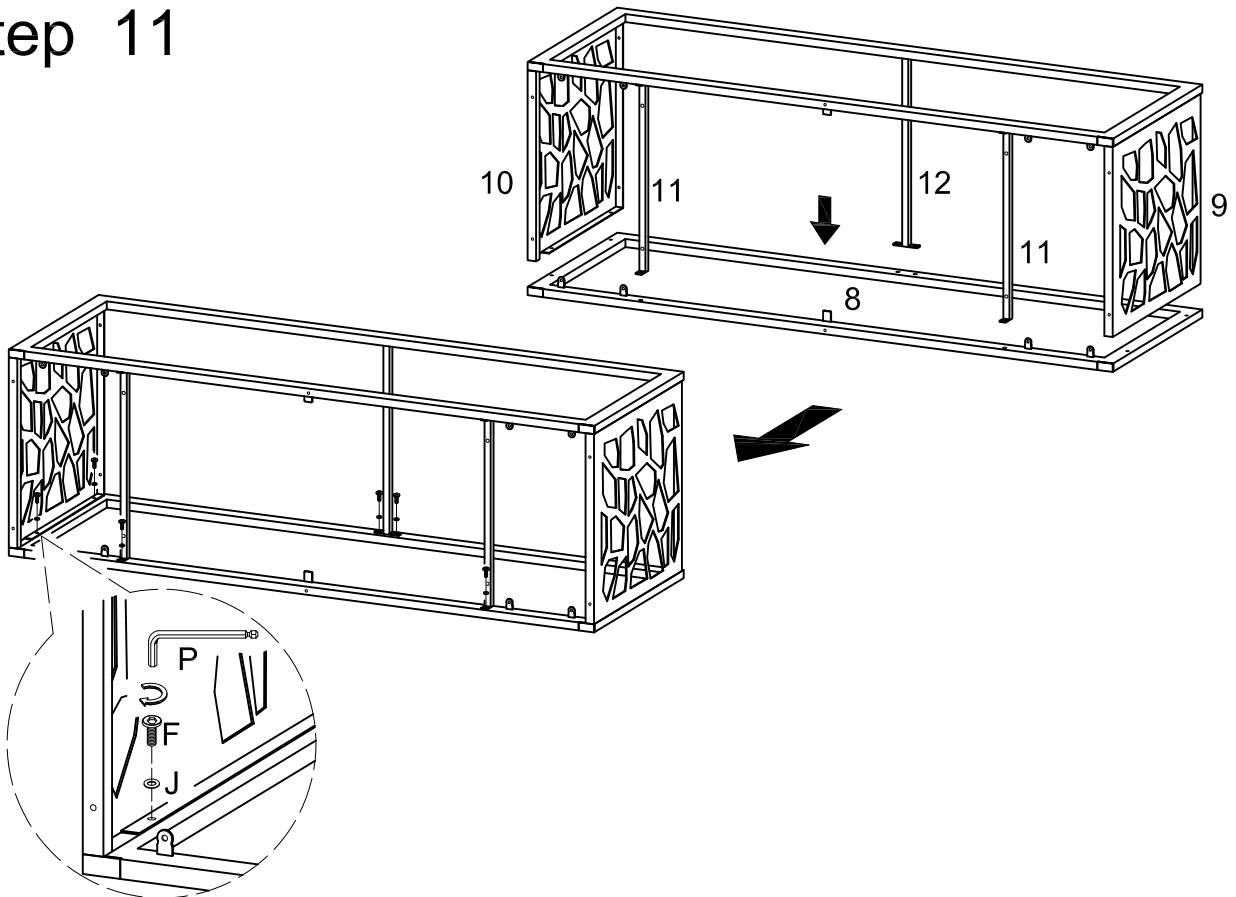
Attach side panels (9,10) and strengthen bars (11,12) to frame (8) using bolts (F) and washers (J). Tighten bolts (F) with wrench (P).

Step 10



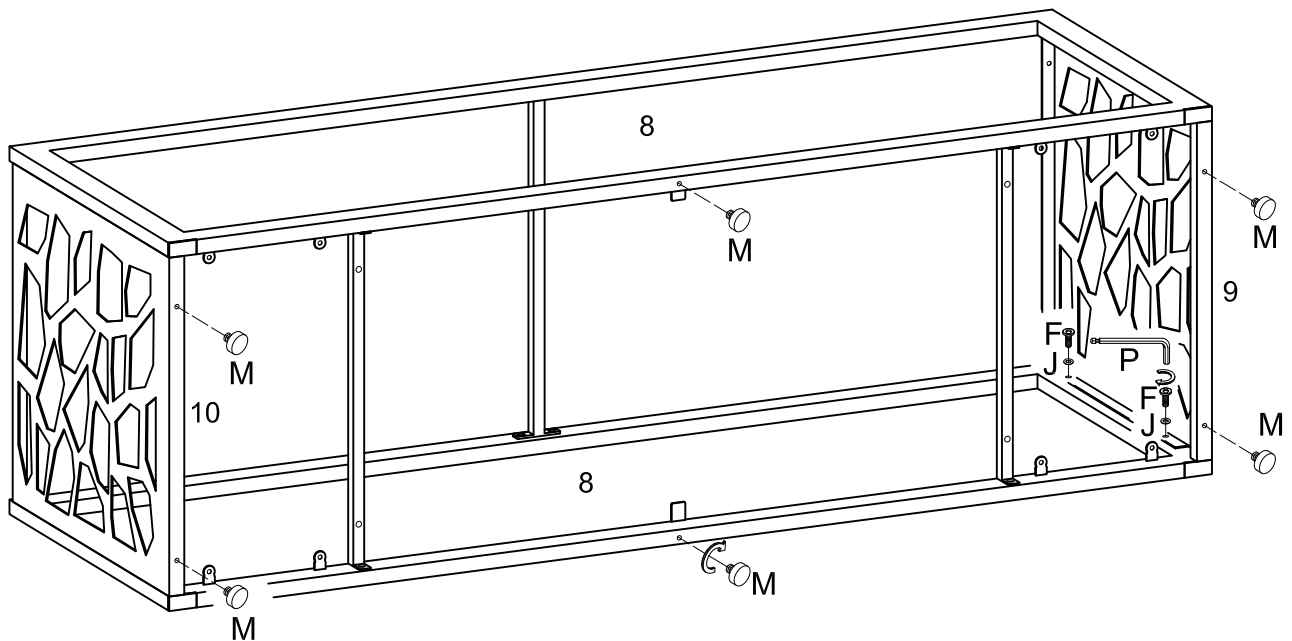
Attach side panel (9) to frame (8) using bolts (F) and washers (J). Tighten bolts (F) with wrench (P).

Step 11



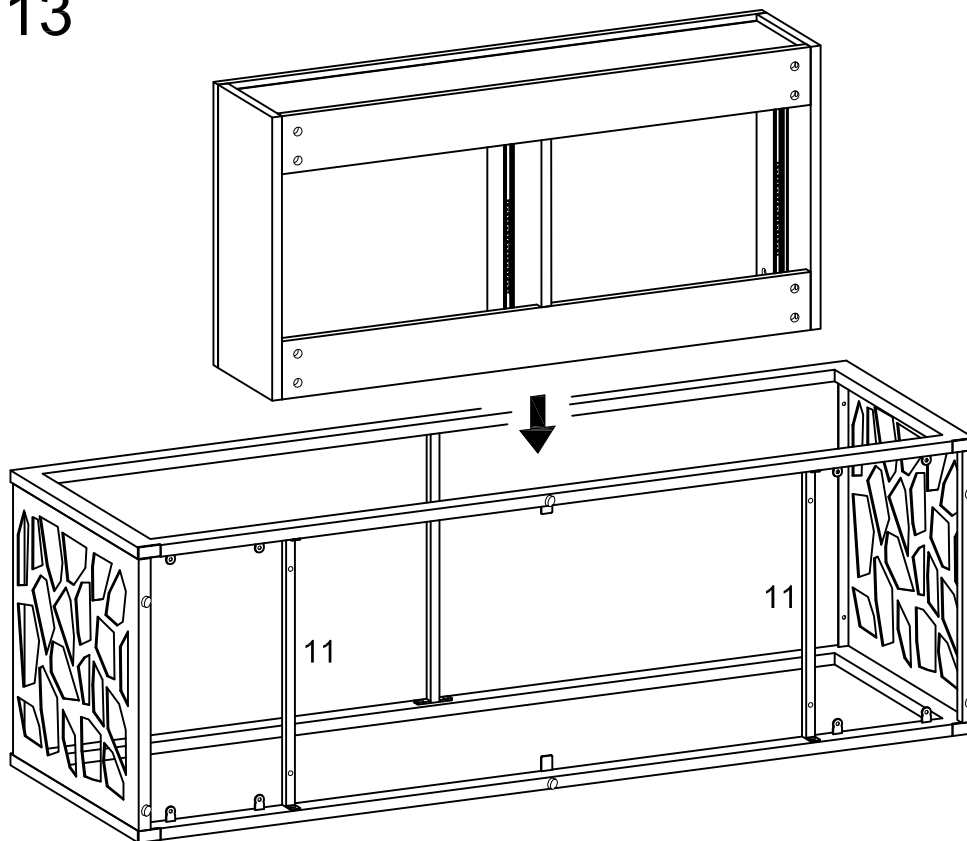
Attach side panels (9,10) and strengthen bars (11,12) to frame (8) using bolts (F) and washers (J). Tighten bolts (F) with wrench (P).

Step 12



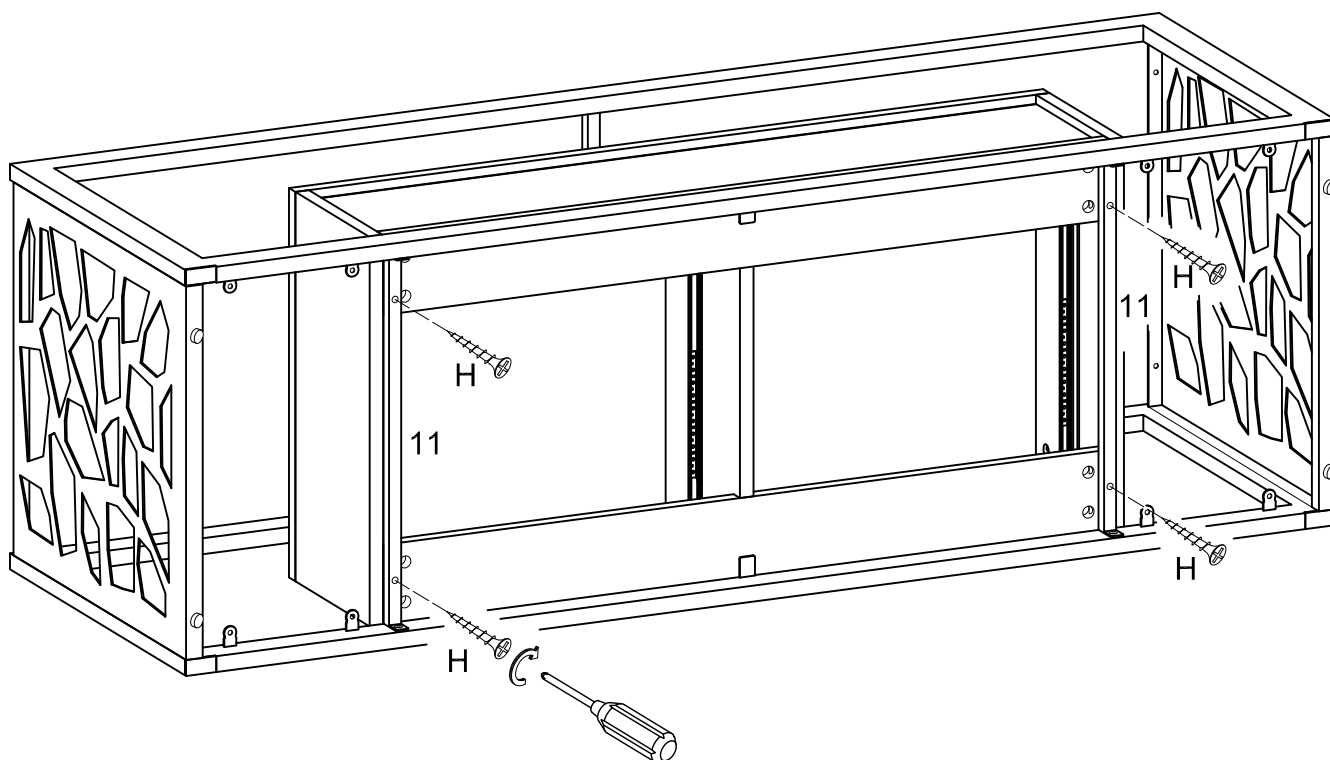
Attach side panel (9) to frame (8) using bolts (F) and washers (J). Tighten bolts (F) with wrench (P). Screw feet (M) into frames (8) and side panels (9,10).

Step 13



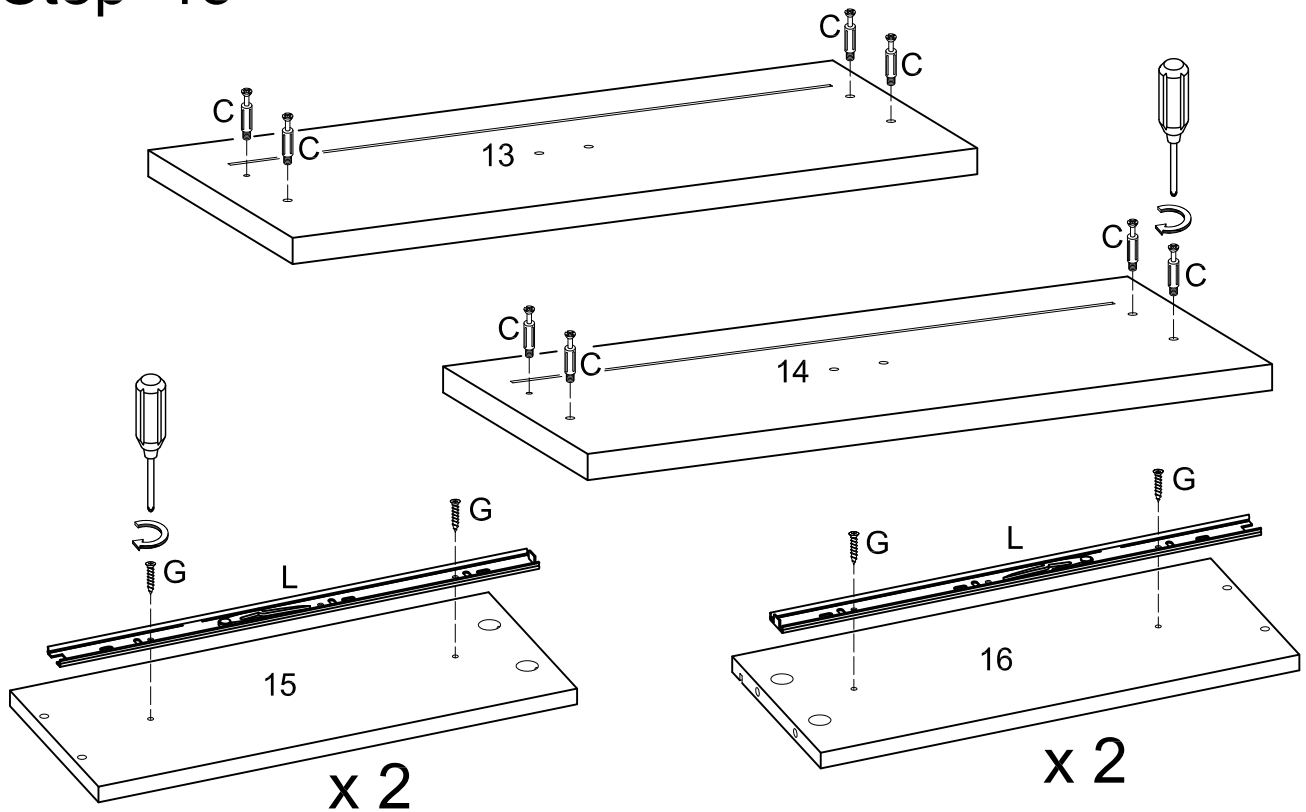
Slide wooden frame into iron frame as shown in the diagram.

Step 14



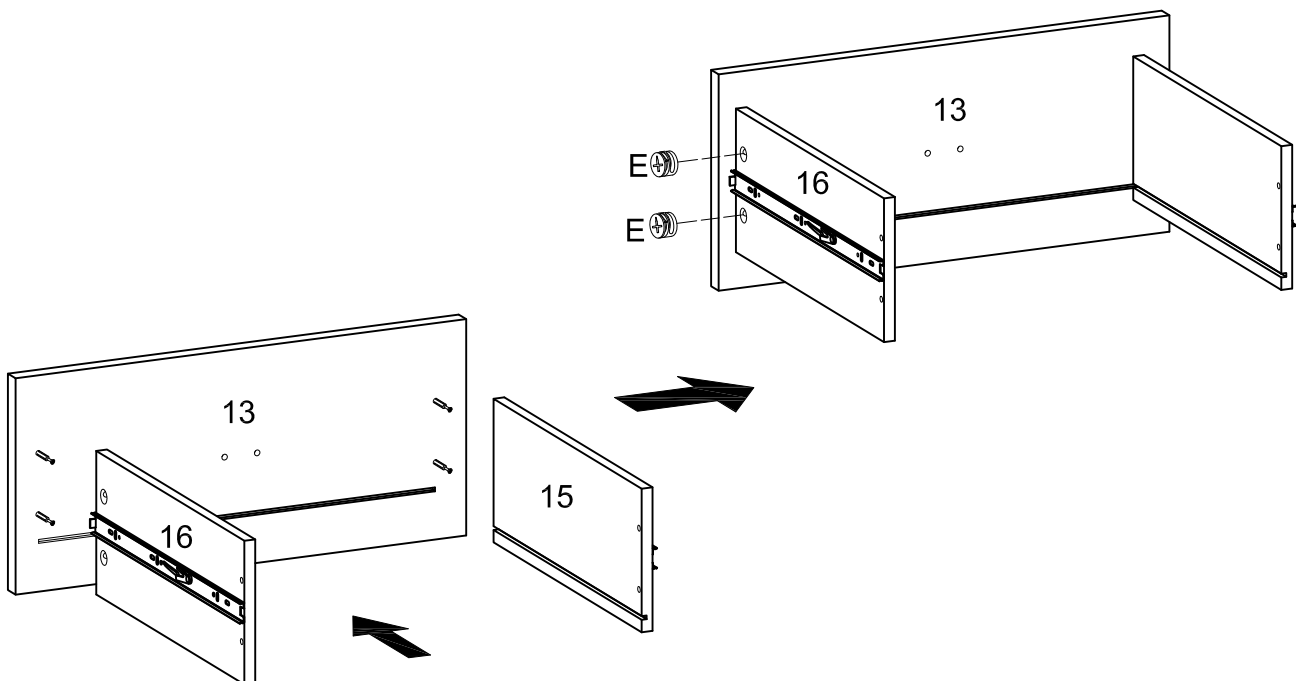
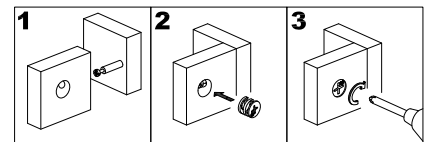
Attach strengthen bars (11) to wooden frame using screws (H). Tighten screws (H) with a screwdriver.

Step 15



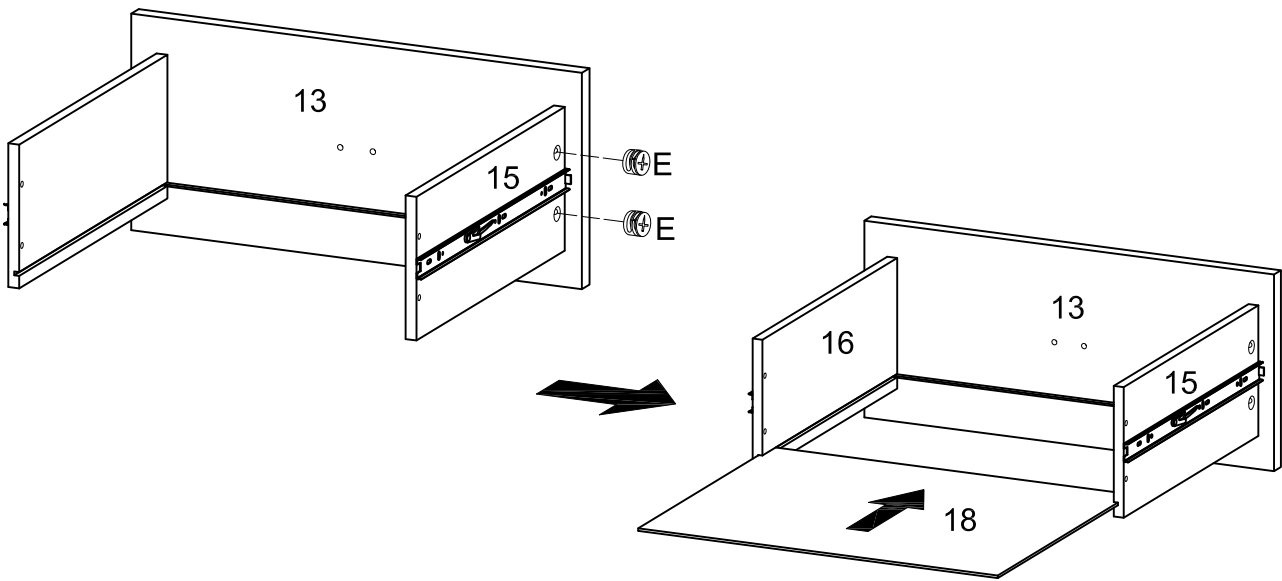
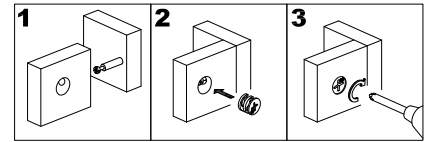
Screw cam bolts (C) into drawer front panels (13,14). Attach right drawer tracks (L) to drawer side panels (15,16) using screws (G). Tighten screws (G) with a screwdriver.

Step 16



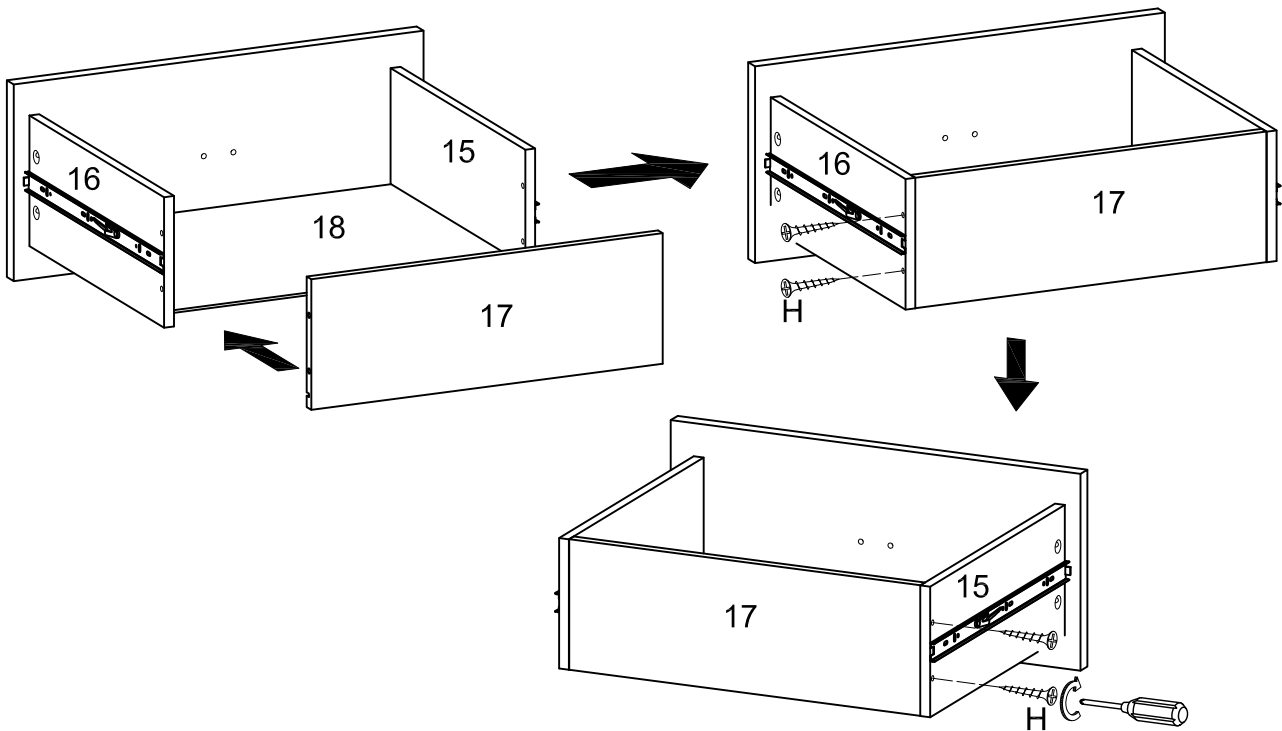
Attach drawer side panels (15,16) to right drawer front panel (13) using small cam locks (E). Tighten small cam locks (E) with a screwdriver.

Step 17



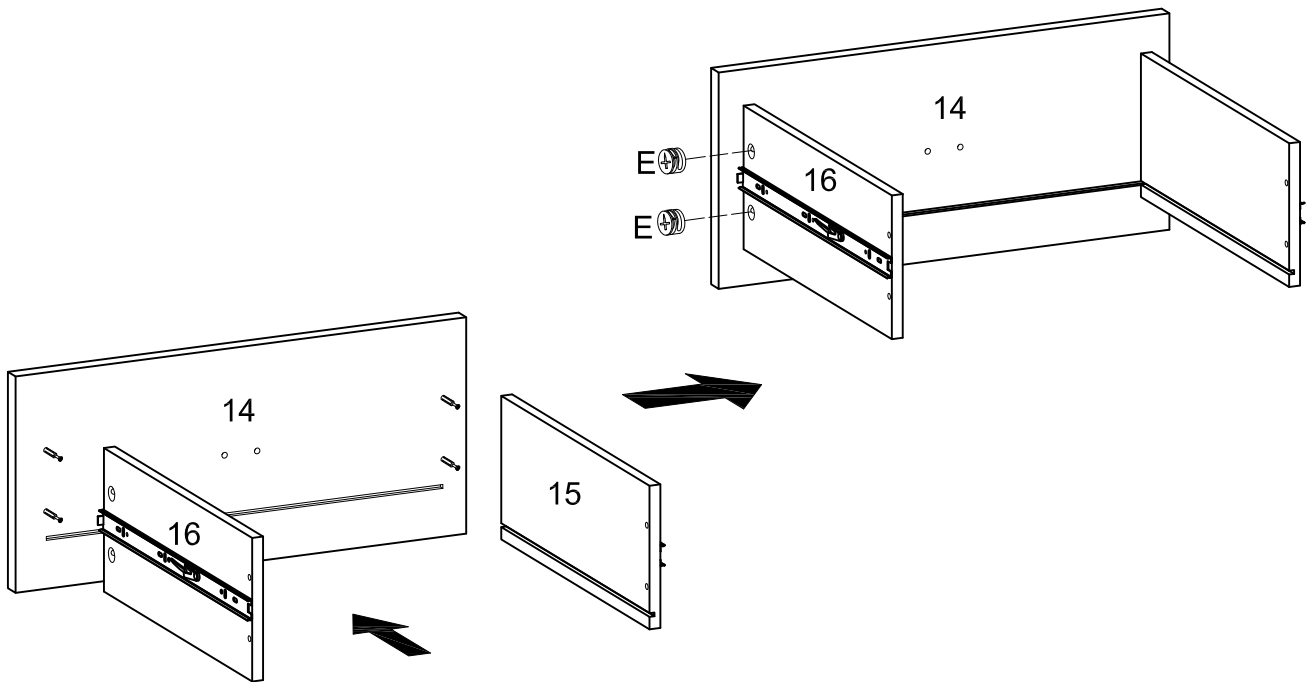
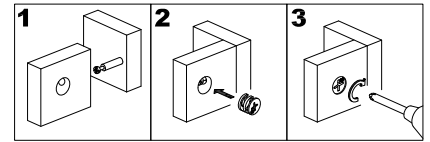
Attach drawer side panel (15) to left drawer front panel (13) using small cam locks (E). Tighten small cam locks (E) with a screwdriver. Slide drawer bottom panel (18) into the assembled drawer panels as shown in the diagram.

Step 18



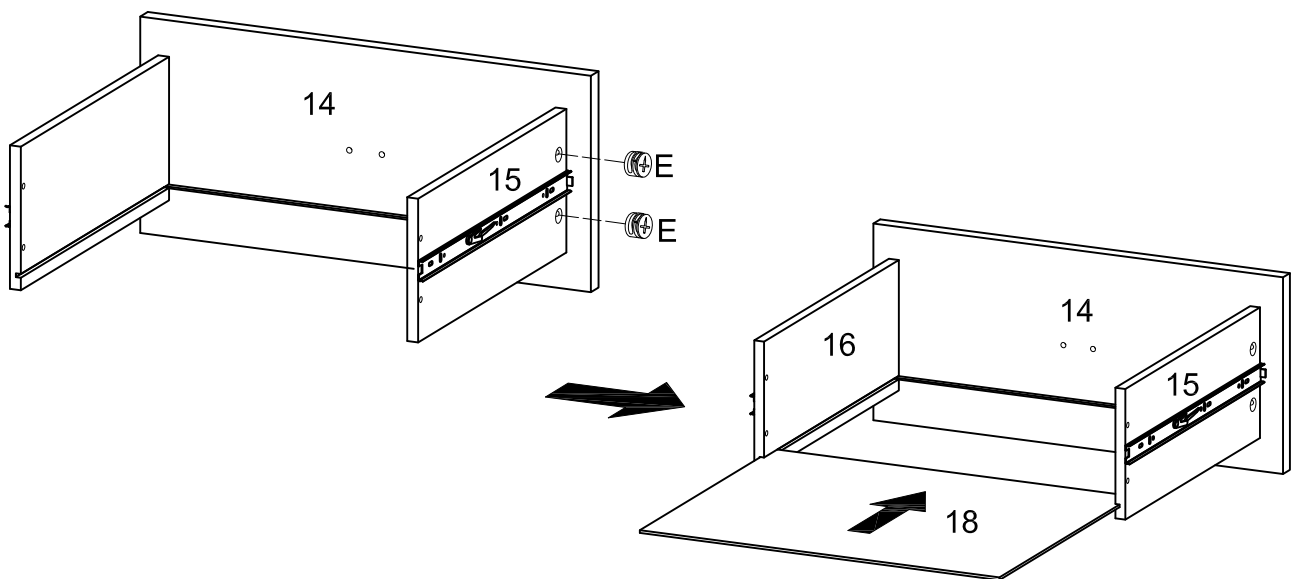
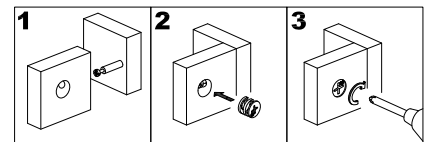
Attach drawer end panel (17) to drawer side panels (15,16) using screws (H). Tighten screws (H) with a screwdriver.

Step 19



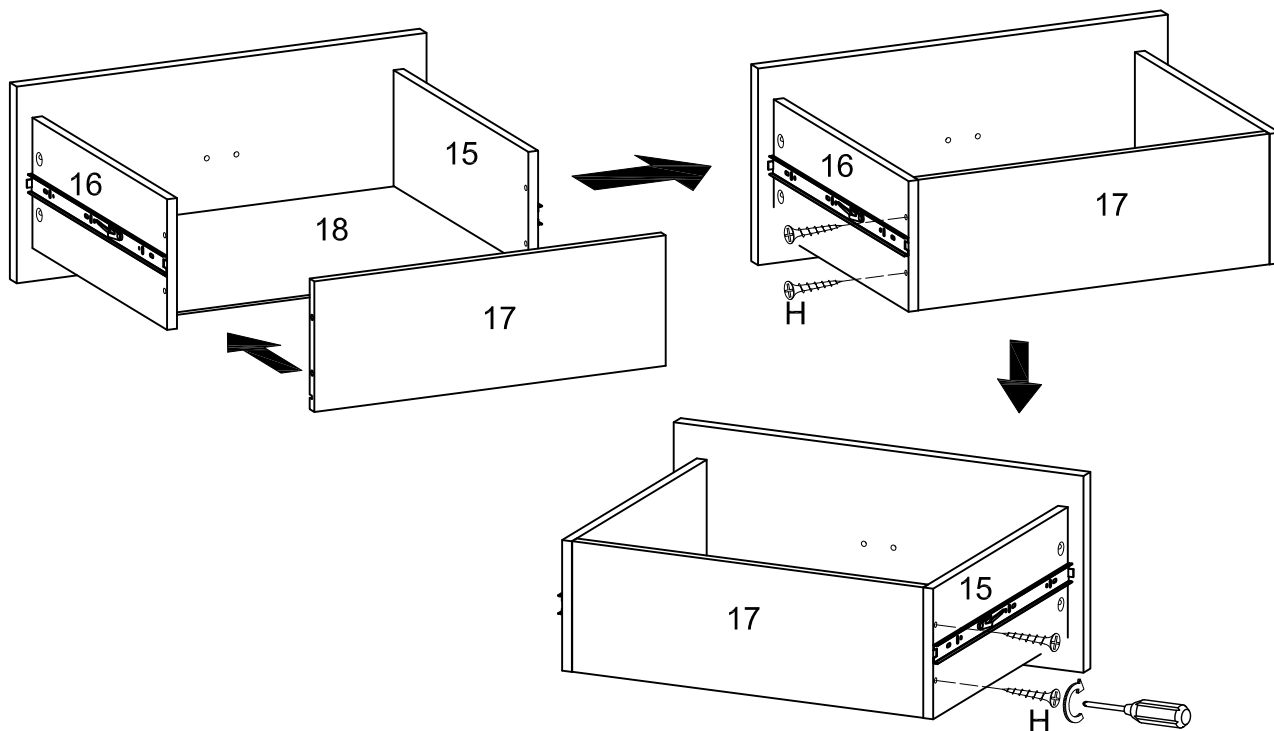
Attach drawer side panels (15,16) to left drawer front panel (14) using small cam locks (E). Tighten small cam locks (E) with a screwdriver.

Step 20



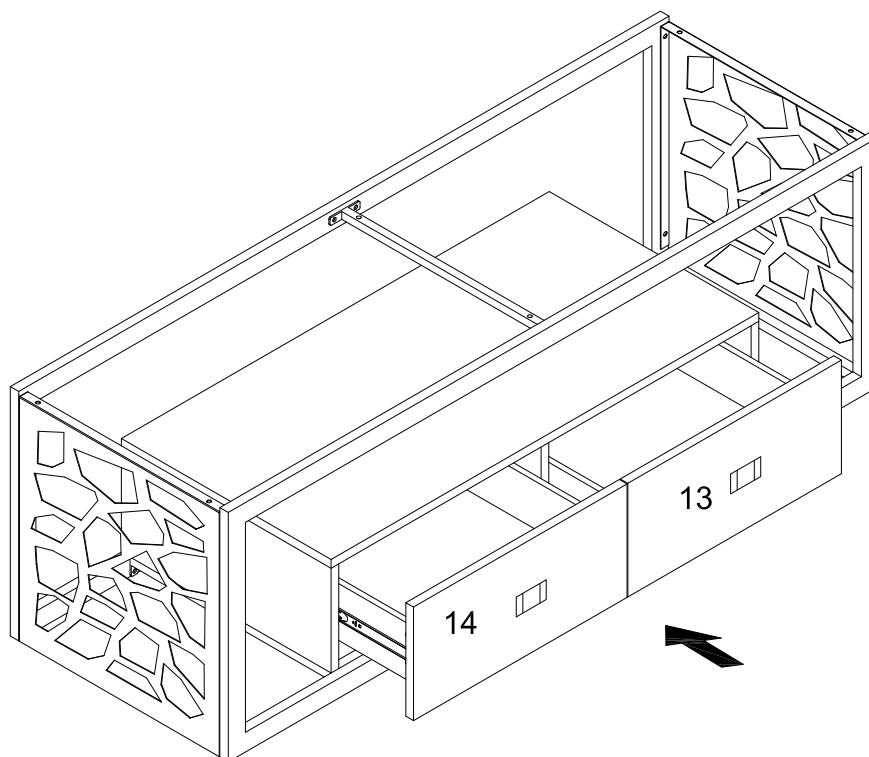
Attach drawer side panel (15) to right drawer front panel (14) using small cam locks (E). Tighten small cam locks (E) with a screwdriver. Slide drawer bottom panel (18) into the assembled drawer panels as shown in the diagram.

Step 21



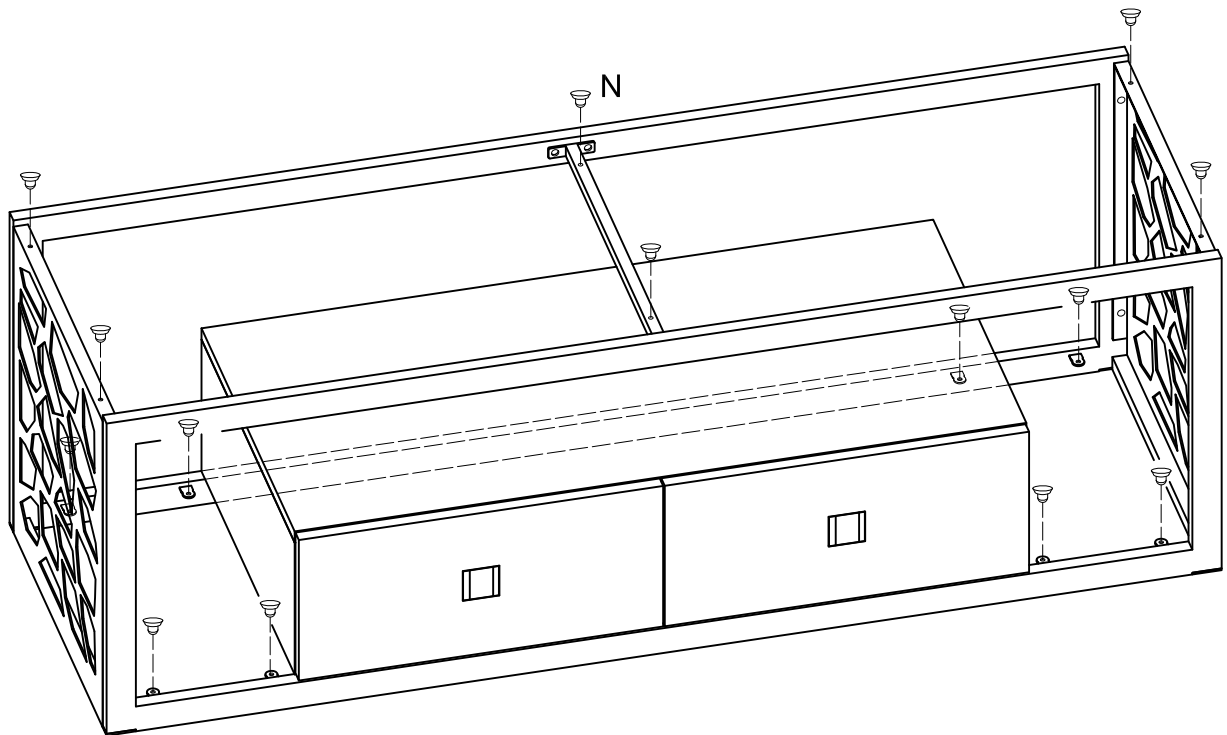
Attach drawer end panel (17) to drawer side panels (15,16) using screws (H). Tighten screws (H) with a screwdriver.

Step 22



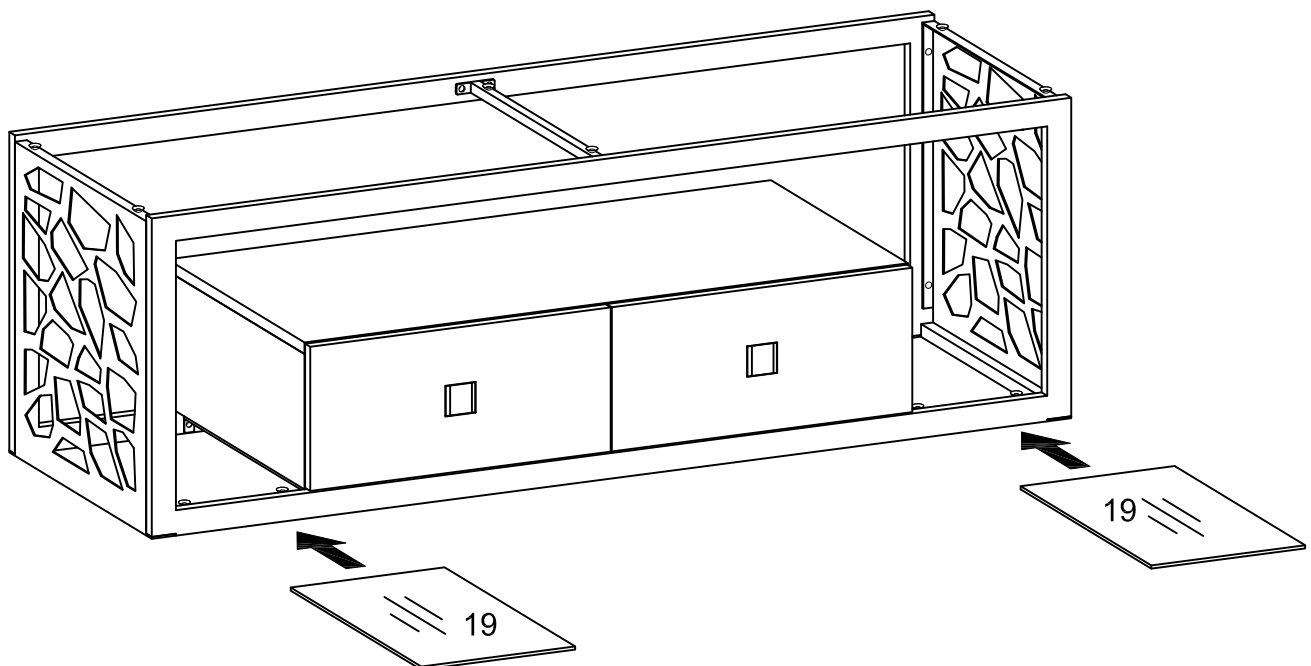
Slide assembled drawers (13,14) carefully into palce as shown in the diagram.

Step 23



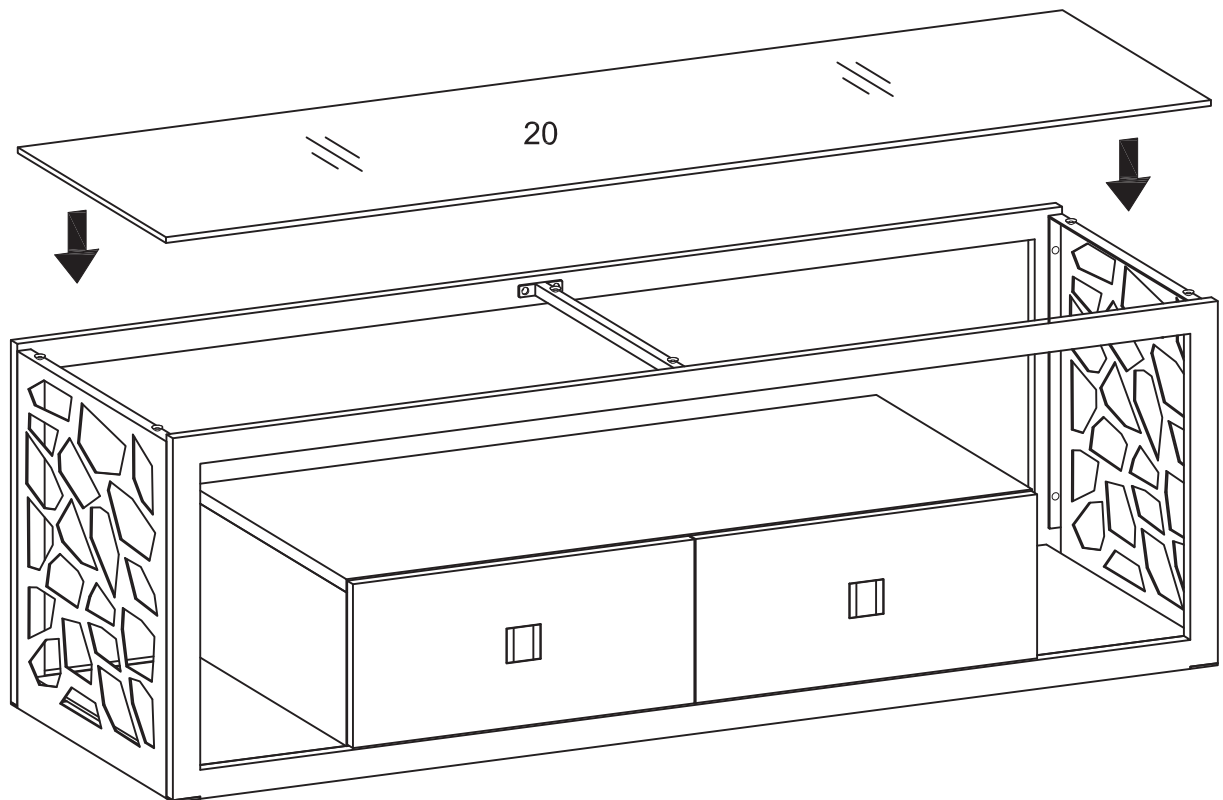
Insert rubber cups (N) into the holes on the frame as shown in the diagram.

Step 24



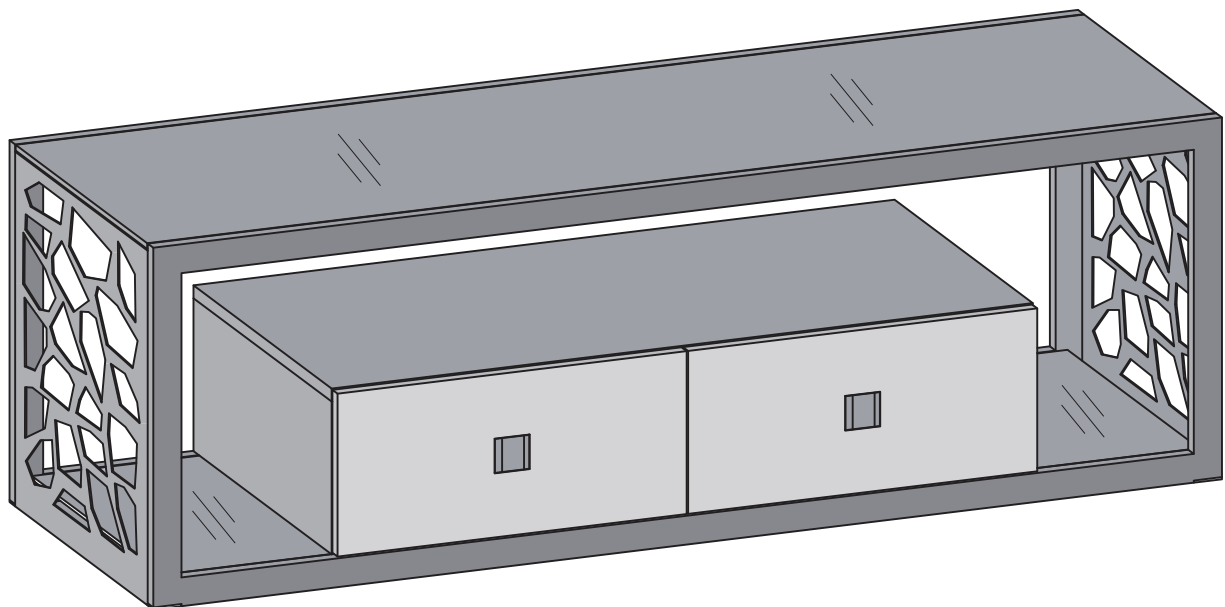
Slide lower glass shelves (19) carefully into position as shown in the diagram.

Step 25



Place top glass (20) carefully on top of the frame as shown in the diagram.

Step 26



Final Assembly