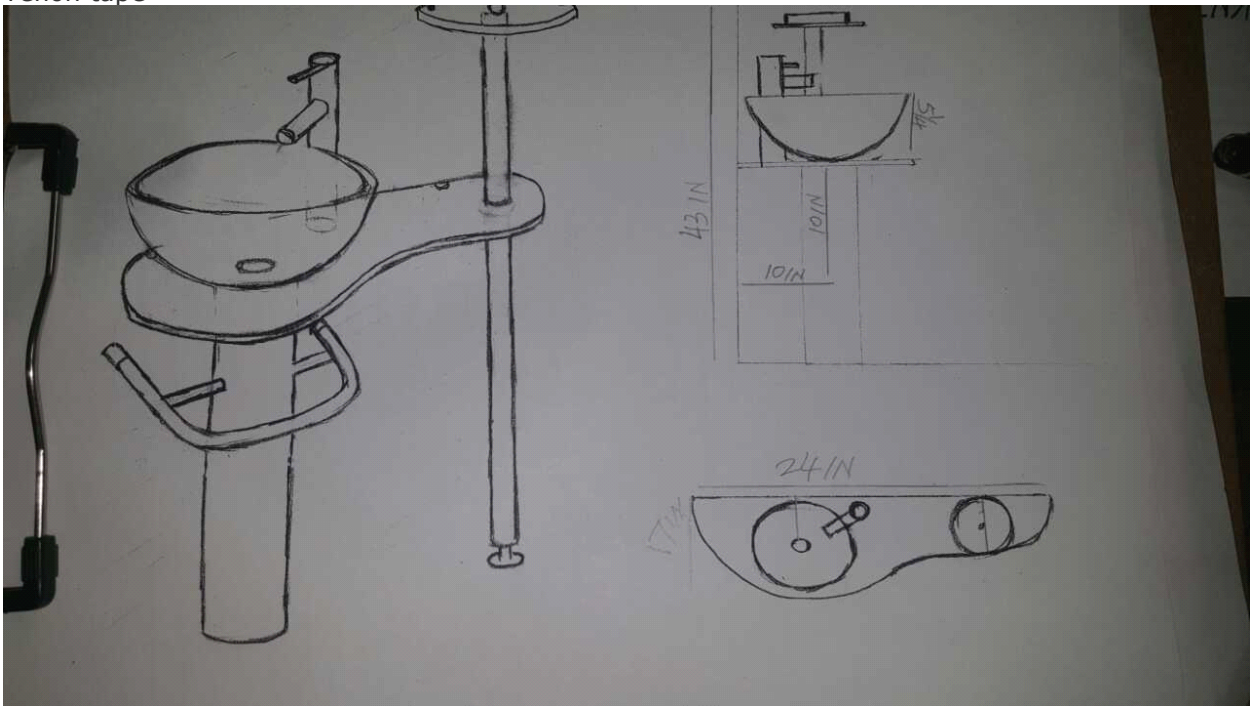
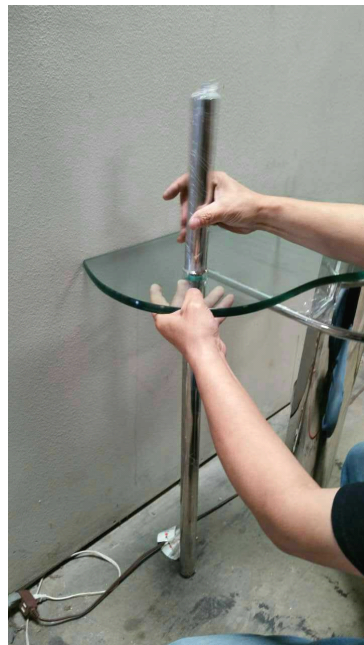
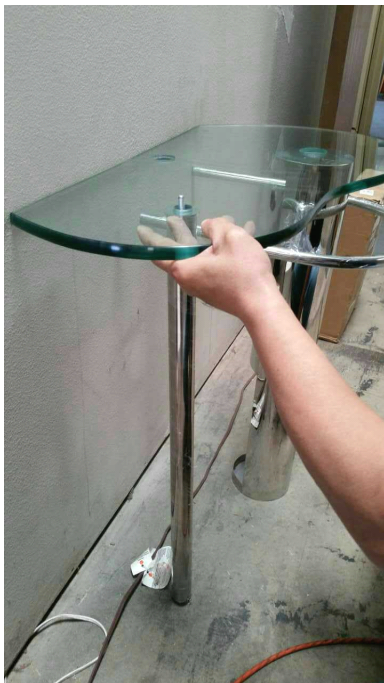


Things you might need for the installation:
vessel sink,

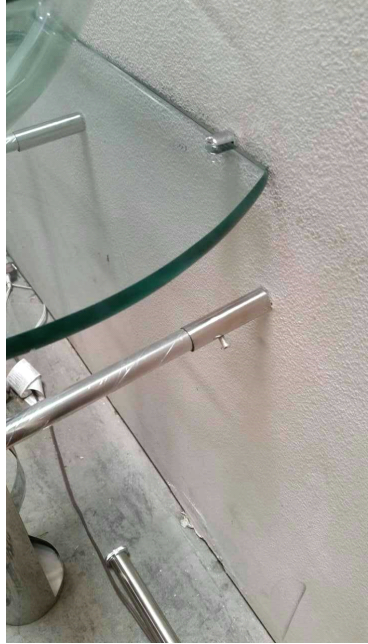
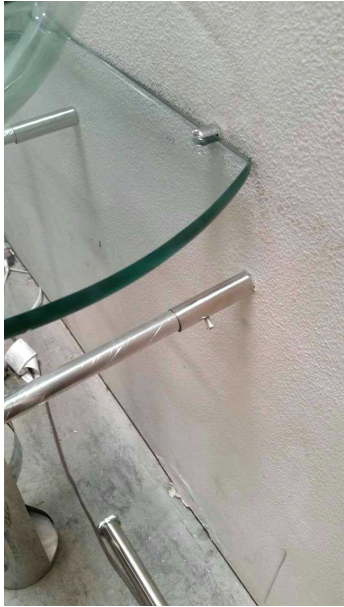
- plumber's putty(home depot), liquid nails(home depot),
- Bucket
- silicone caulk(home depot),
-
- Putty knife
- Plumber's putty
- Pipe wrench
- Channel-lock pliers
- Teflon tape



Set up steps:









Drain set up





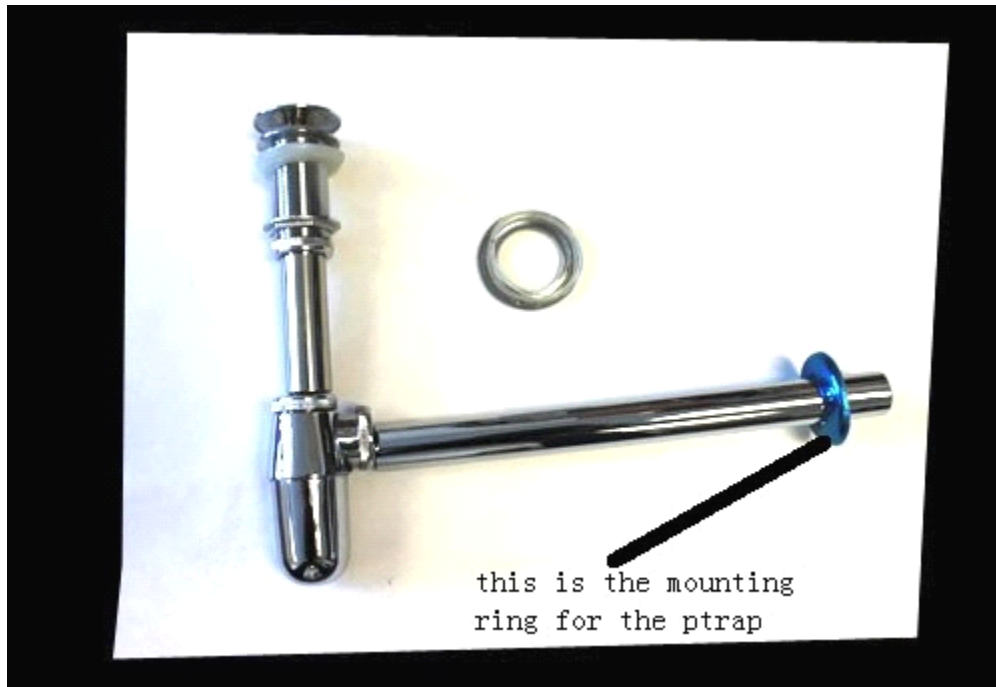
Ptrap set up





https://www.youtube.com/watch?v=_lxwNgRPsdC

video for a similar glass vanity set, it shows you the basic plumbing configuration. Your plumbing might be a little different, so consult with your plumber.



Step 1: Line Up the Drain Hole with the Cutout

- Line up the sink's drain hole with the cutout in the countertop. The homeowners in this project had the pros who supplied and installed the countertop handle the delicate job of cutting holes for the sink and faucet assembly

Step 2: Apply Putty to the Underside

- Roll out a bead of plumber's putty about 1/4" in diameter and place it around the underside of the drain.



Step 3: Attach a Rubber Gasket

On the underside of the counter, attach the rubber gasket, plastic washer and lock nut to the drain. Then, attach the drain stem. It is important that the hole for the drain through the top of the counter is not too large. It needs to be just big enough to allow the drain's pipe through. The thin metal ring and a retaining nut that screw onto the pipe from under the counter actually "clamp" the sink down. Apply a small bead of caulk to the bottom of the sink around the edge and carefully set it in place while keeping it centered over the hole.

Wipe away any excess If your drain came with a rubber upper gasket you'll want to use it. Otherwise, apply plumber's putty to the underside edge of the upper retaining ring (that which makes contact with the sink's inside surface where the drain penetrates through the bowl).

Slip the lower fastening ring and nut onto the threaded end of the pipe. Hand-tighten and then use the pipe wrench to firmly secure the sink in place.



Step 4: Dry-Fit the Pipes and Fittings

Dry-fit the PVC pipe and fittings, including the P-trap, making cuts as needed.



STEP 1



STEP 2



Step 3



step 4



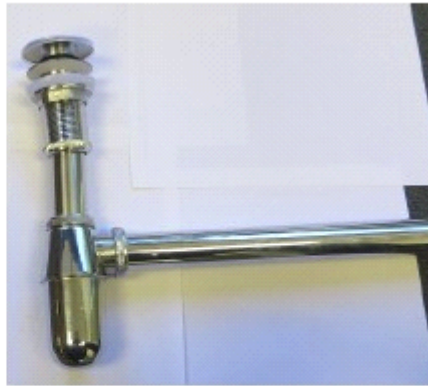
Step 5



step 6



Step 7



step 8



Step 7



step 8

This is demo how the drain connected to your ptrap without the glass top & vessel sink. In real installation, you should put the drain the the surface of the glass top, bottom drain connecting the ptrap.

Step 5: Apply Primer and Cement

Apply PVC primer and PVC cement to the appropriate surfaces and assemble the drain, tying it into the roughed-in waste pipe. Make sure to hold each connection together for several moments so the chemical reaction of the primer and cement doesn't force the pieces apart.

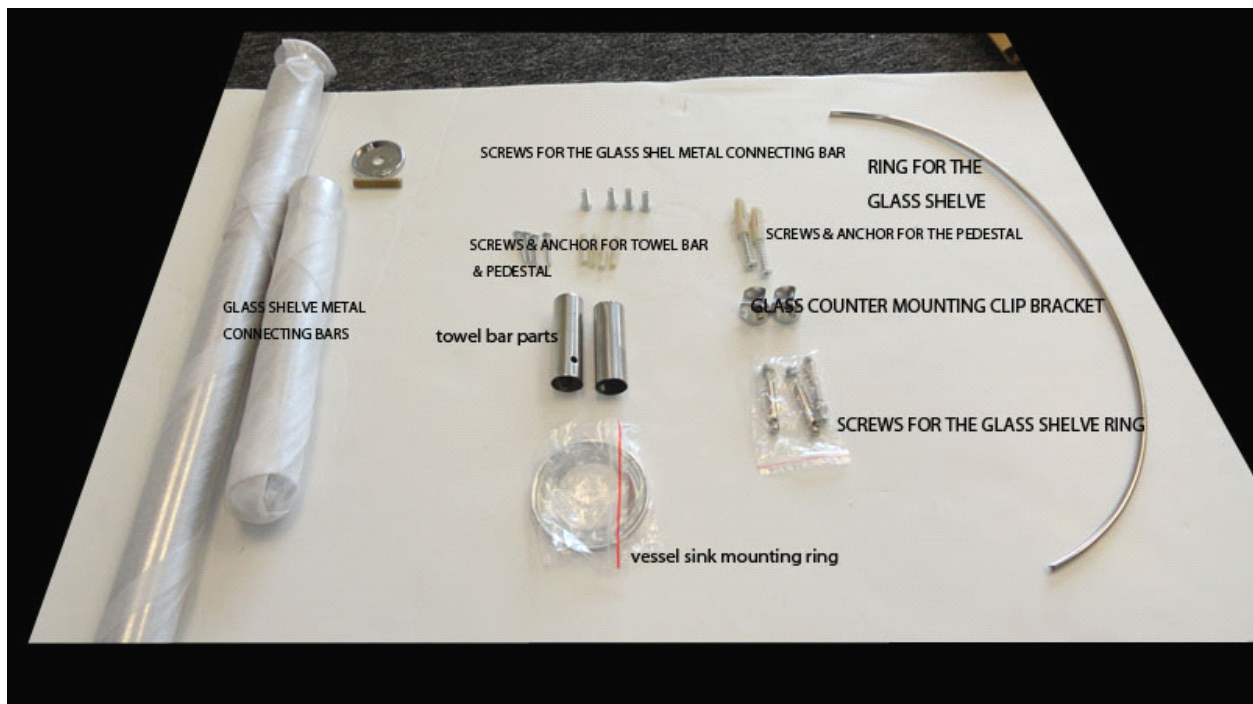
here are some videos how to change pop up drain on a similar vanity set, it will help you plumber to understand how the drain's tail piece connecting to the ptrap part.

http://www.youtube.com/watch?v=tit9r_-AbdA

<http://www.youtube.com/watch?v=NYAwdoe5RTg>

http://gmctradesecrets.aol.com/diy/replace-a-pop-up-drain/#!slide=aol_5076199

parts list



step1-

Place the mounting ring. A mounting ring is only necessary if you're installing an above-counter vessel sink. Recessed vessel sinks are supported directly by the countertop. Place the ring directly over the drain hole in the countertop, applying adhesive or plumber's putty as directed by the instructions that came with your vessel sink.

step2 Lower the sink vessel. Rest the sink either on the mounting ring or into the recessed hole in your countertop. Align the vessel drain hole facing directly

step 3: Caulk the edges of the sink hole. From beneath the countertop, use silicone caulk to seal the seam between the vessel sink and the edges of the countertop hole. This will keep moisture from dripping down

step 4. Separate the drain assembly. The drain assembly that came with your vessel sink may be completely assembled. Separate the drain body from the rest of the assembly. Since each vessel sink is different, check the manual that came with your sink to keep track of how the washers, nuts and O-rings fit on the assembly. You'll be reassembling it in Step 5.

step 5. insert the drain body. Slide the drain body down into the sink's drain hole. If the vessel sink instructions require it, apply a bead of plumber's putty around the fitting and press it firmly into place.

step 6 Reassemble the drain assembly. From underneath the vessel sink, reattach the rest of the washers and other assembly hardware to the drain body, protruding from the drain hole. Check the vessel sink instructions to be sure you assemble everything properly.

Attach the P-trap. Depending on your vessel sink design, you may be using a custom P-trap and drain fittings. Otherwise, you can attach the drain assembly to the existing P-trap, hand-tightening the connections.

Turn on the water. Release the stop valves for the hot and cold water and test the sink faucet.

To make the vessel sink stable & not moving, please apply a small bead of caulk to the bottom of the sink around the edge and carefully set it in place while keeping it centered over the hole.

Wipe away any excess.

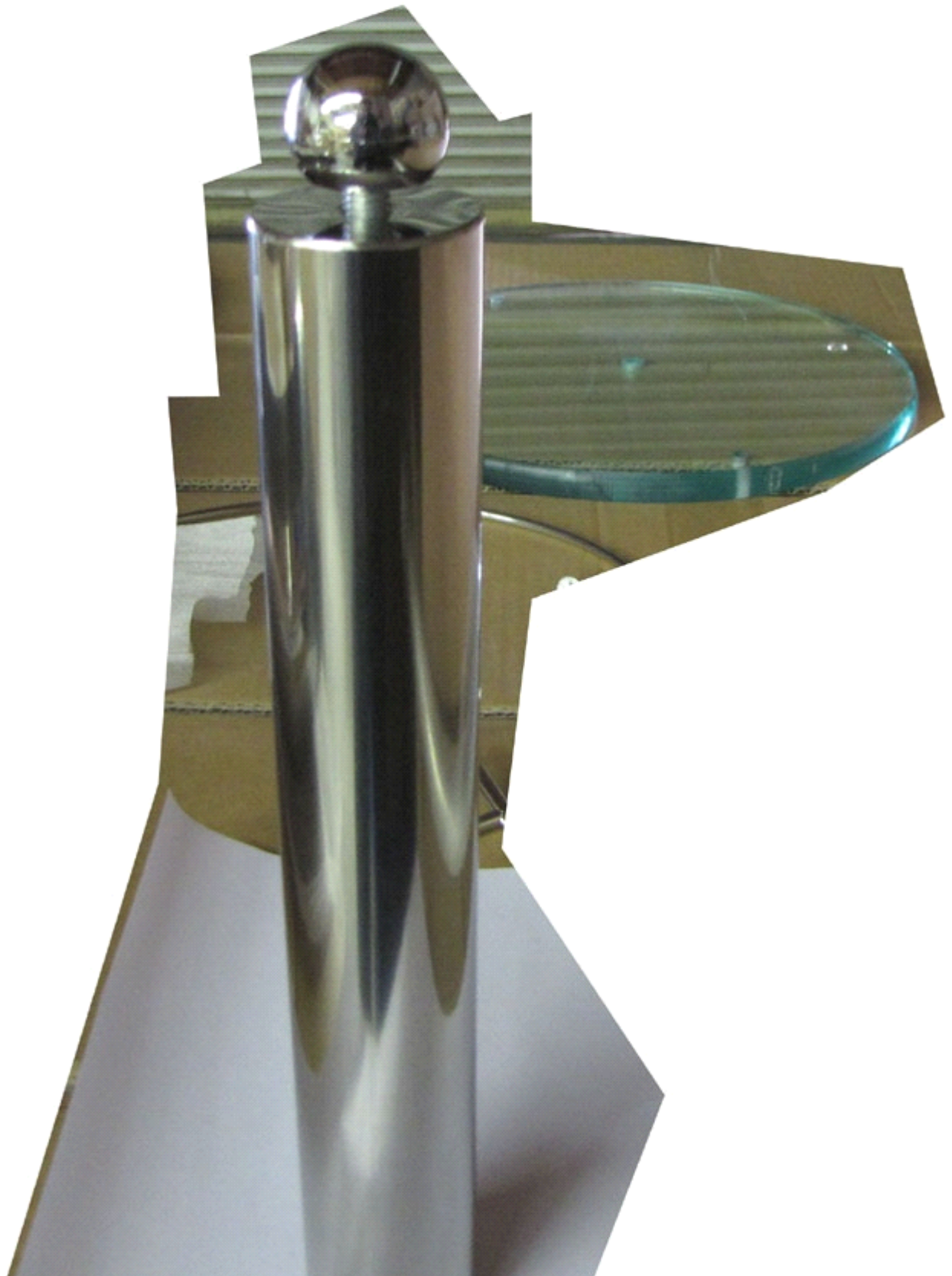
step1: measure the distance where you want to mount the pedestal, then mount the pedestal to the floor.

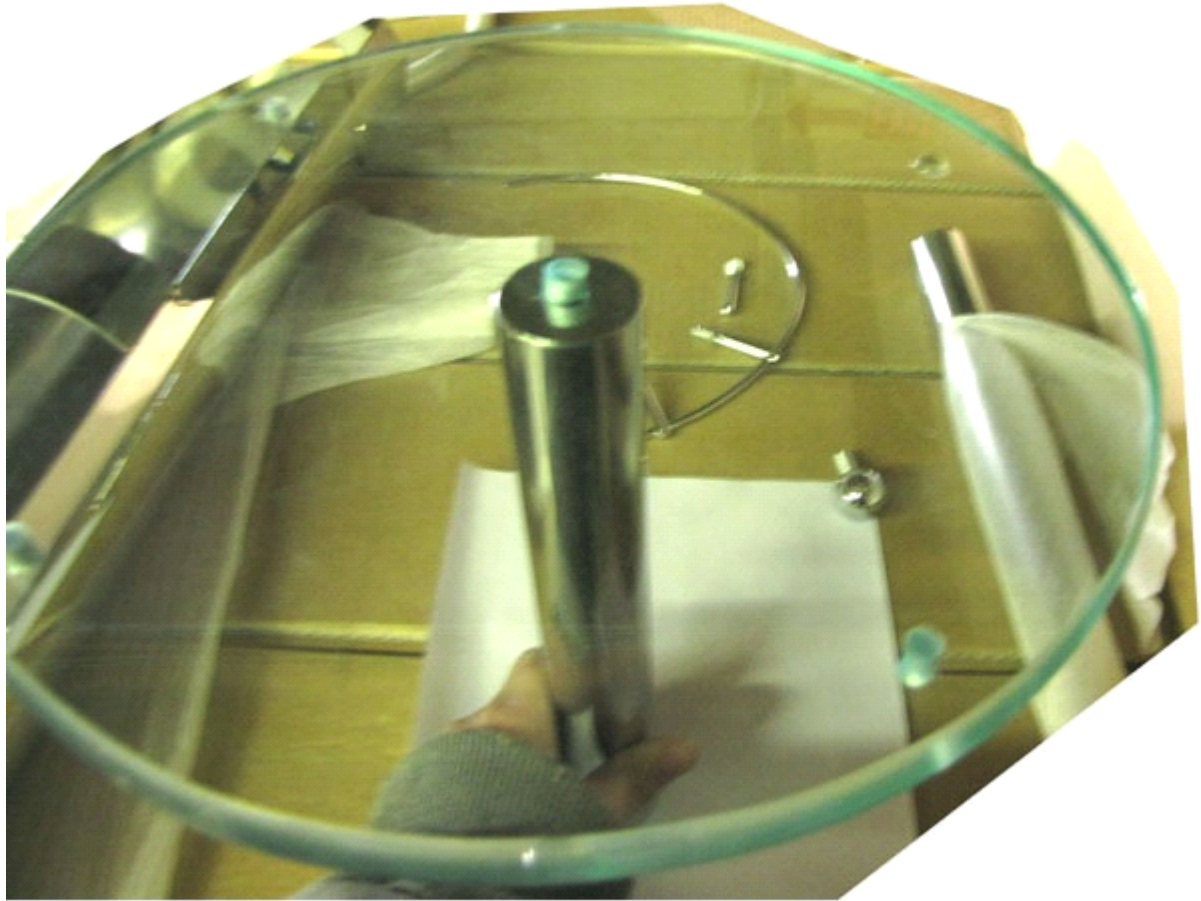
step2, assemble the left or right glass shelve bar & shelves

step3: mount the glass countertop bracket on the wall, then insert the glass countertop inside the bracket; glass countertop should be sitting on the top of pedestal & shelf leg.

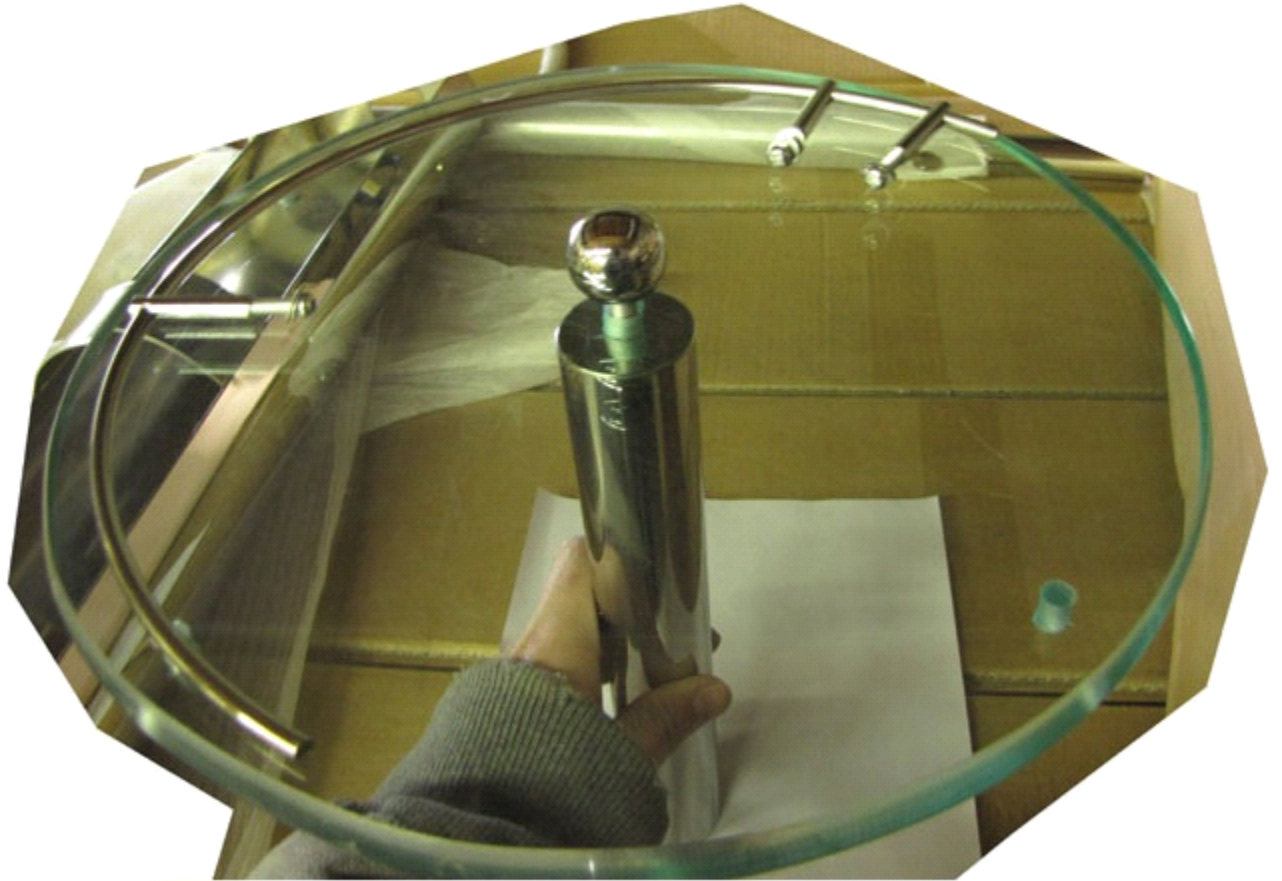
step: 4 install vessel sink, drain

step 5: mount the towel bar



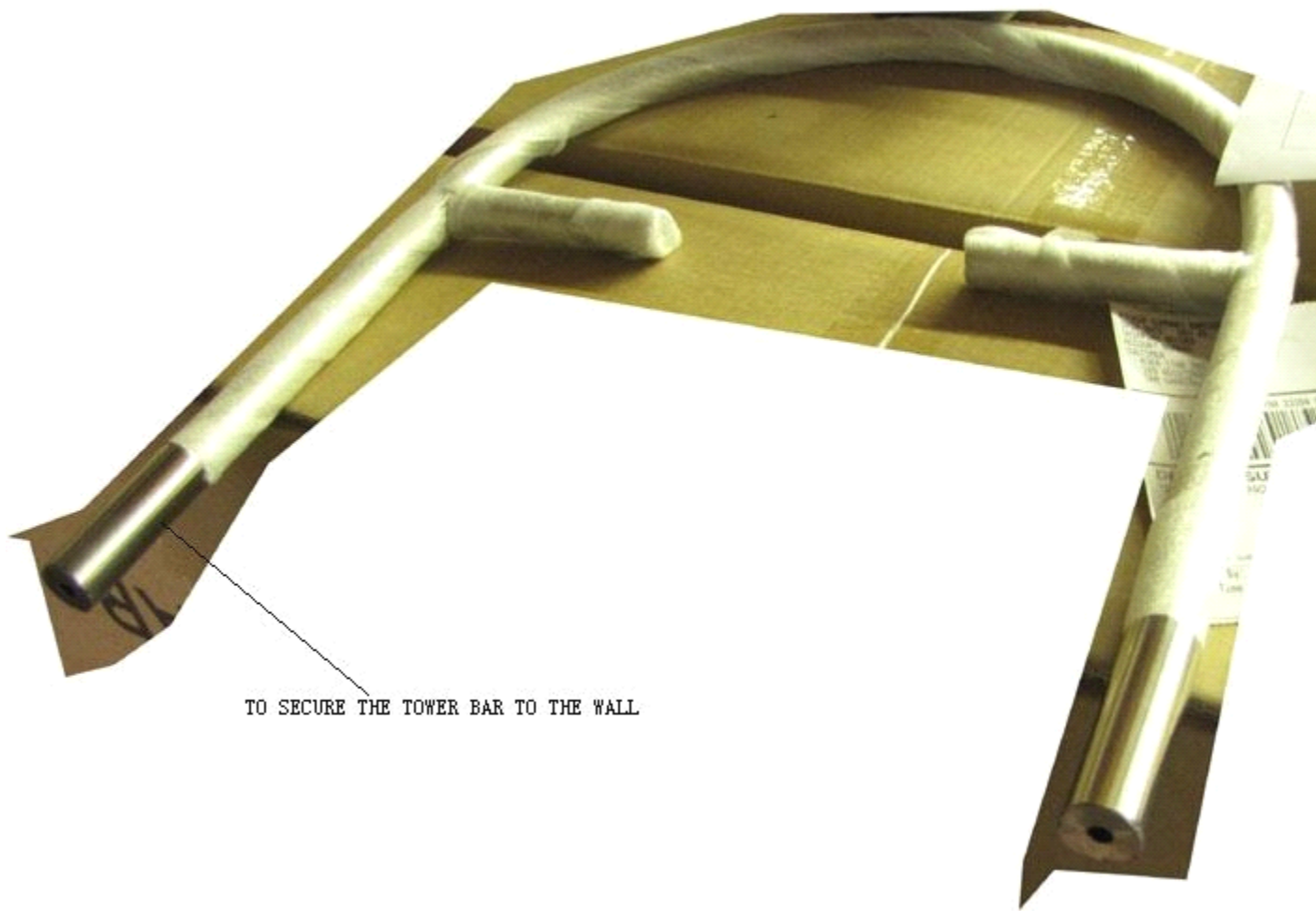




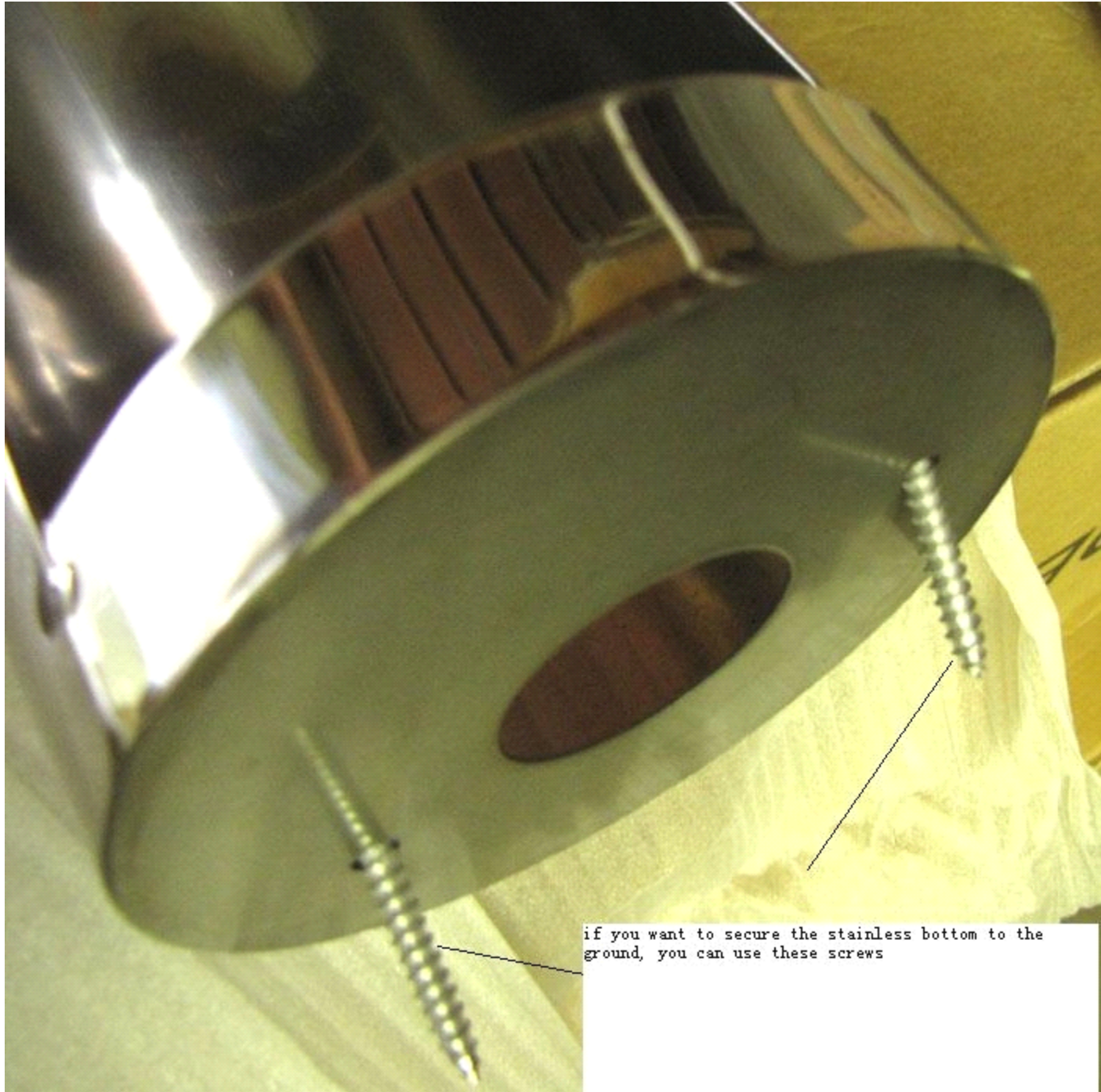








TO SECURE THE TOWER BAR TO THE WALL



if you want to secure the stainless bottom to the ground, you can use these screws