

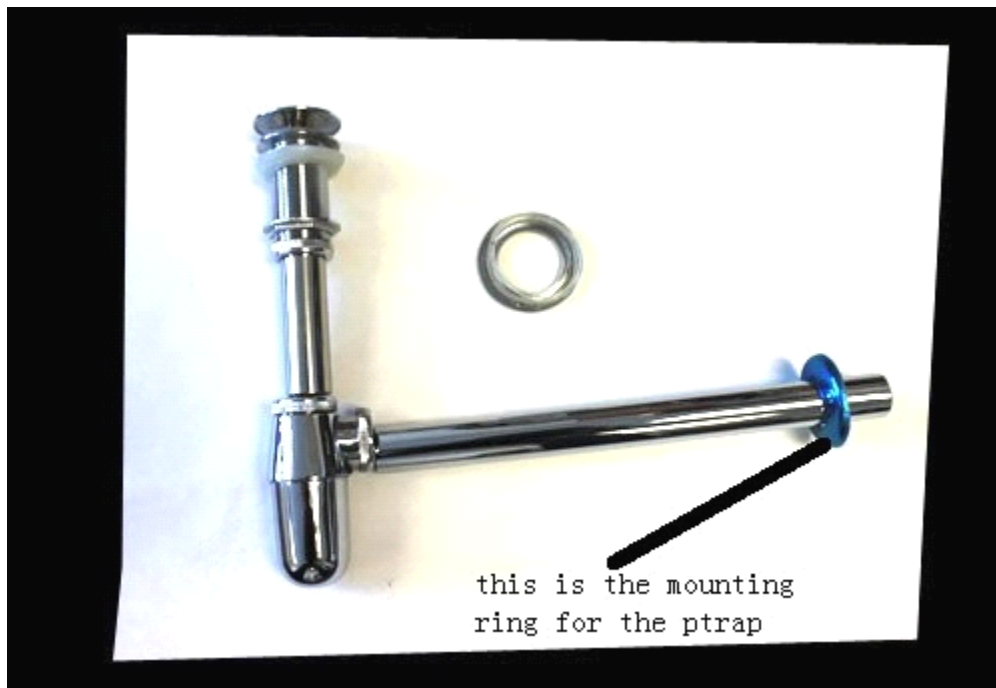
Things you might need for the installation:
vessel sink,

- plumber's putty(home depot), liquid nails(home depot),
- Bucket
- silicone caulk(home depot),
- Putty knife

- Plumber's putty
- Pipe wrench
- Channel-lock pliers
- Teflon tape

https://www.youtube.com/watch?v=_lxwNgRPsdC

video for a similar glass vanity set, it shows you the basic plumbing configuration. Your plumbing might be a little different, so consult with your plumber.



Step 1: Line Up the Drain Hole with the Cutout

- Line up the sink's drain hole with the cutout in the countertop. The homeowners in this project had the pros who supplied and installed the countertop handle the delicate job of cutting holes for the sink and faucet assembly

Step 2: Apply Putty to the Underside

- Roll out a bead of plumber's putty about 1/4" in diameter and place it around the underside of the drain.



Step 3: Attach a Rubber Gasket

On the underside of the counter, attach the rubber gasket, plastic washer and lock nut to the drain. Then, attach the drain stem. It is important that the hole for the drain through the top of the counter is not too large. It needs to be just big enough to allow the drain's pipe through. The thin metal ring and a retaining nut that screw onto the pipe from under the counter actually "clamp" the sink down. Apply a small bead of caulk to the bottom of the sink around the edge and carefully set it in place while keeping it centered over the hole.

Wipe away any excess If your drain came with a rubber upper gasket you'll want to use it. Otherwise, apply plumber's putty to the underside edge of the upper retaining ring (that which makes contact with the sink's inside surface where the drain penetrates through the bowl).

Slip the lower fastening ring and nut onto the threaded end of the pipe. Hand-tighten and then use the pipe wrench to firmly secure the sink in place.



Step 4: Dry-Fit the Pipes and Fittings

Dry-fit the PVC pipe and fittings, including the P-trap, making cuts as needed.



STEP 1



STEP 2



Step 3



step 4



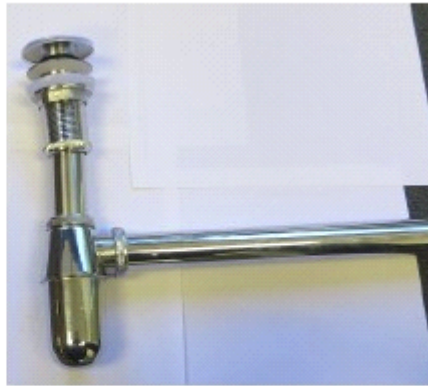
Step 5



step 6



Step 7



step 8



Step 7



step 8

This is demo how the drain connected to your ptrap without the glass top & vessel sink. In real installation, you should put the drain the the surface of the glass top, bottom drain connecting the ptrap.

Step 5: Apply Primer and Cement

Apply PVC primer and PVC cement to the appropriate surfaces and assemble the drain, tying it into the roughed-in waste pipe. Make sure to hold each connection together for several moments so the chemical reaction of the primer and cement doesn't force the pieces apart.

here are some videos how to change pop up drain on a similar vanity set, it will help you plumber to understand how the drain's tail piece connecting to the ptrap part.

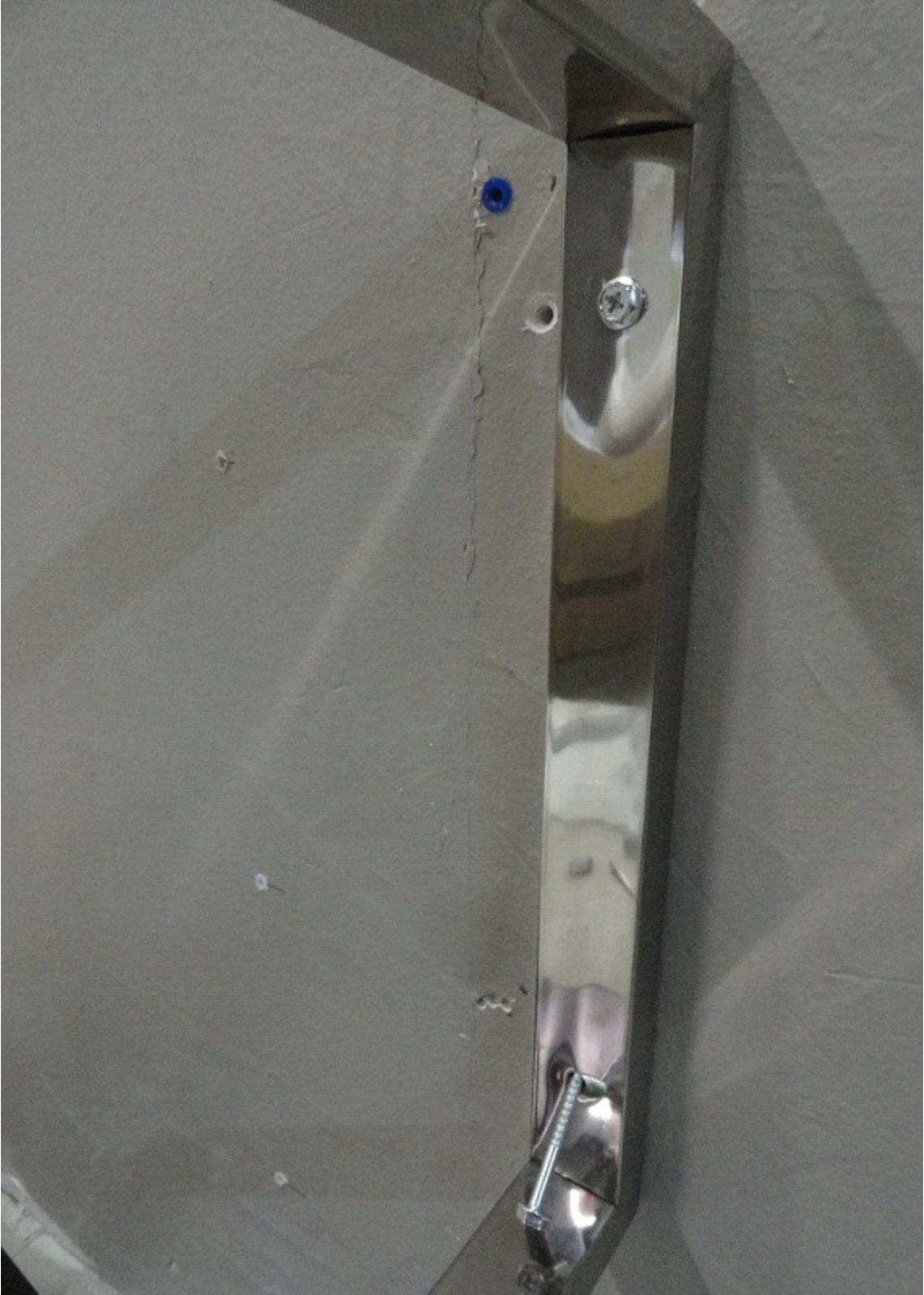
http://www.youtube.com/watch?v=tit9r_-AbdA

<http://www.youtube.com/watch?v=NYAwdoe5RTg>

http://gmctradesecrets.aol.com/diy/replace-a-pop-up-drain/#!slide=aol_5076199

kk25 installation









glass counter clip

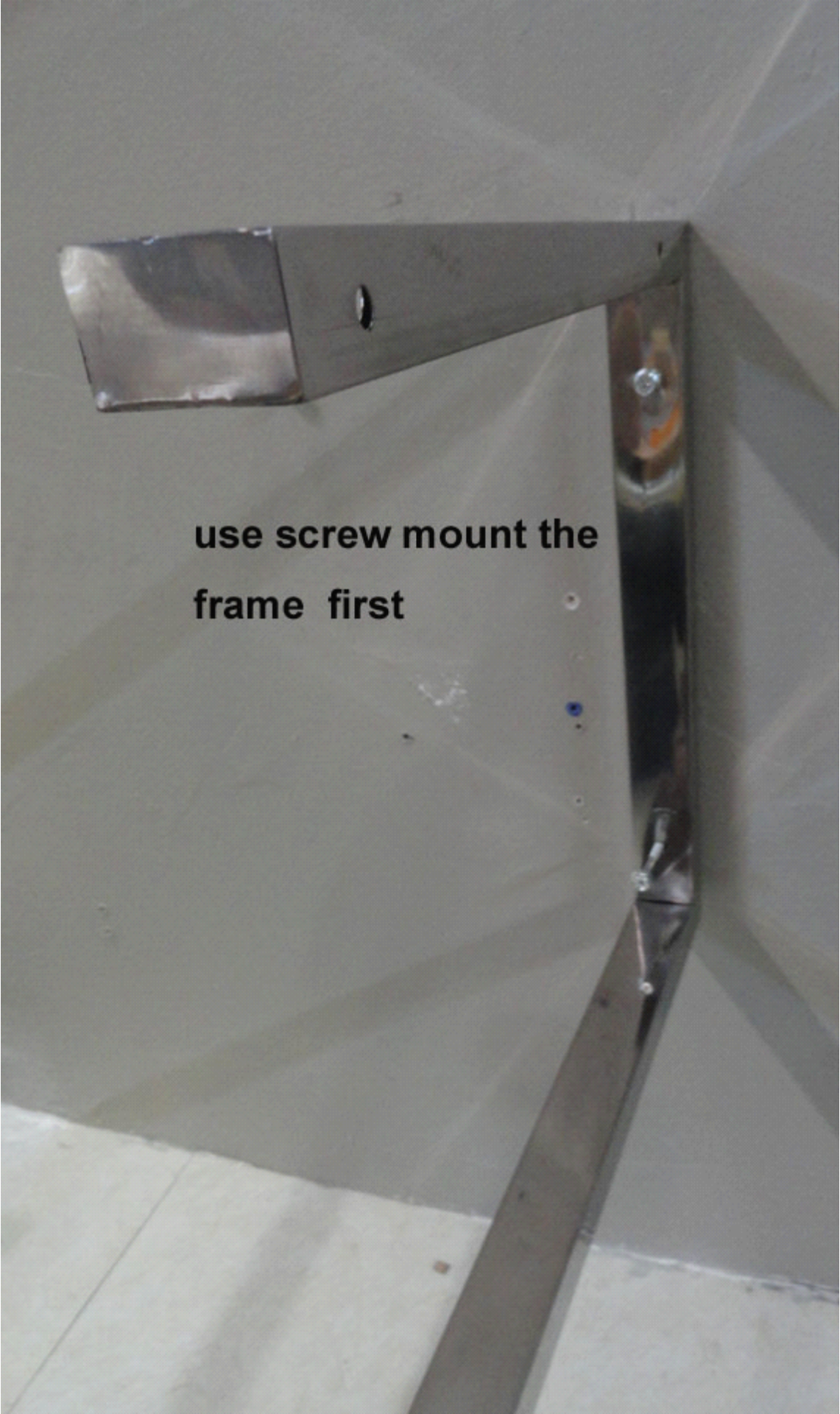
glass counter support

wall mo

glass sh

screws for the
frame

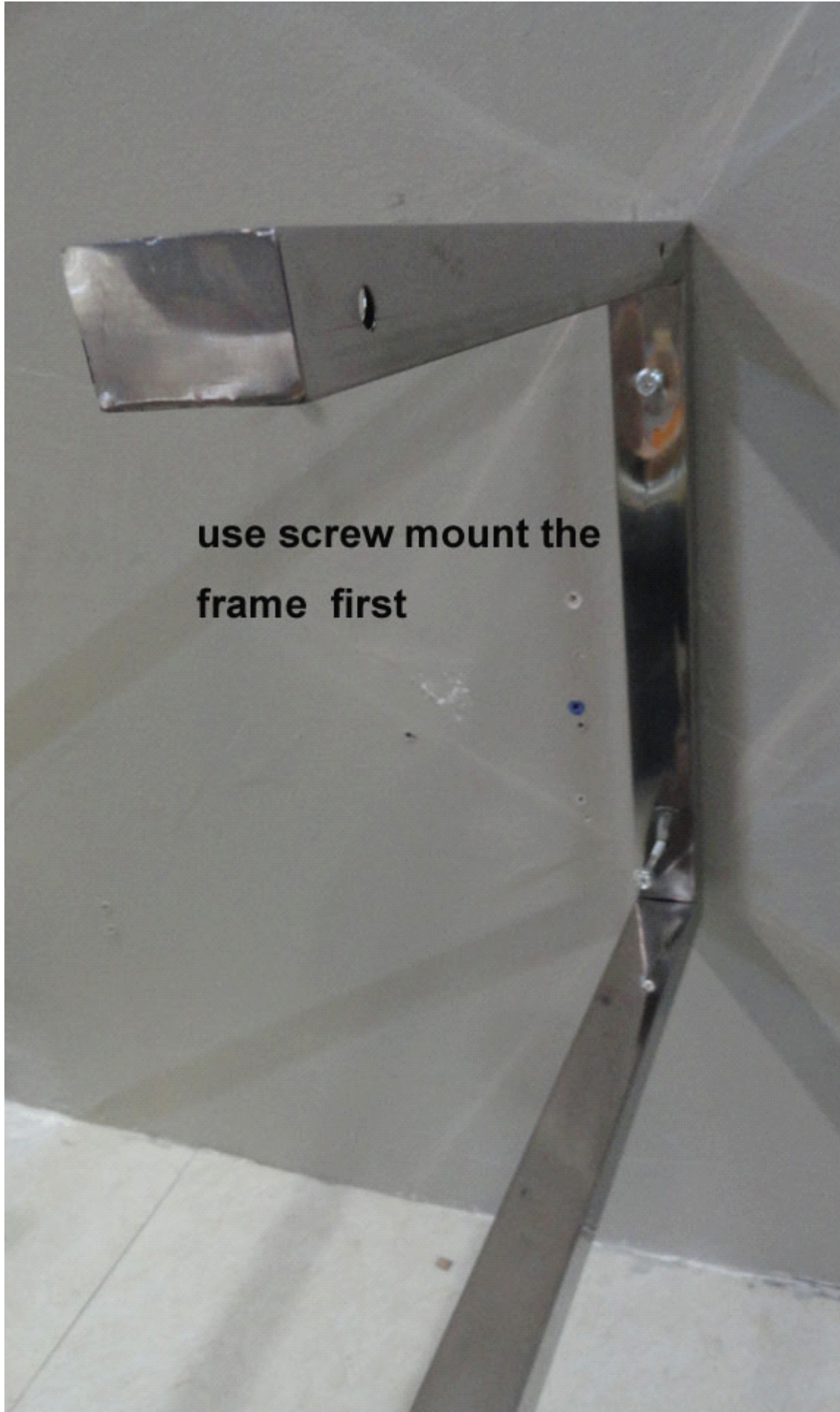
decoration caps



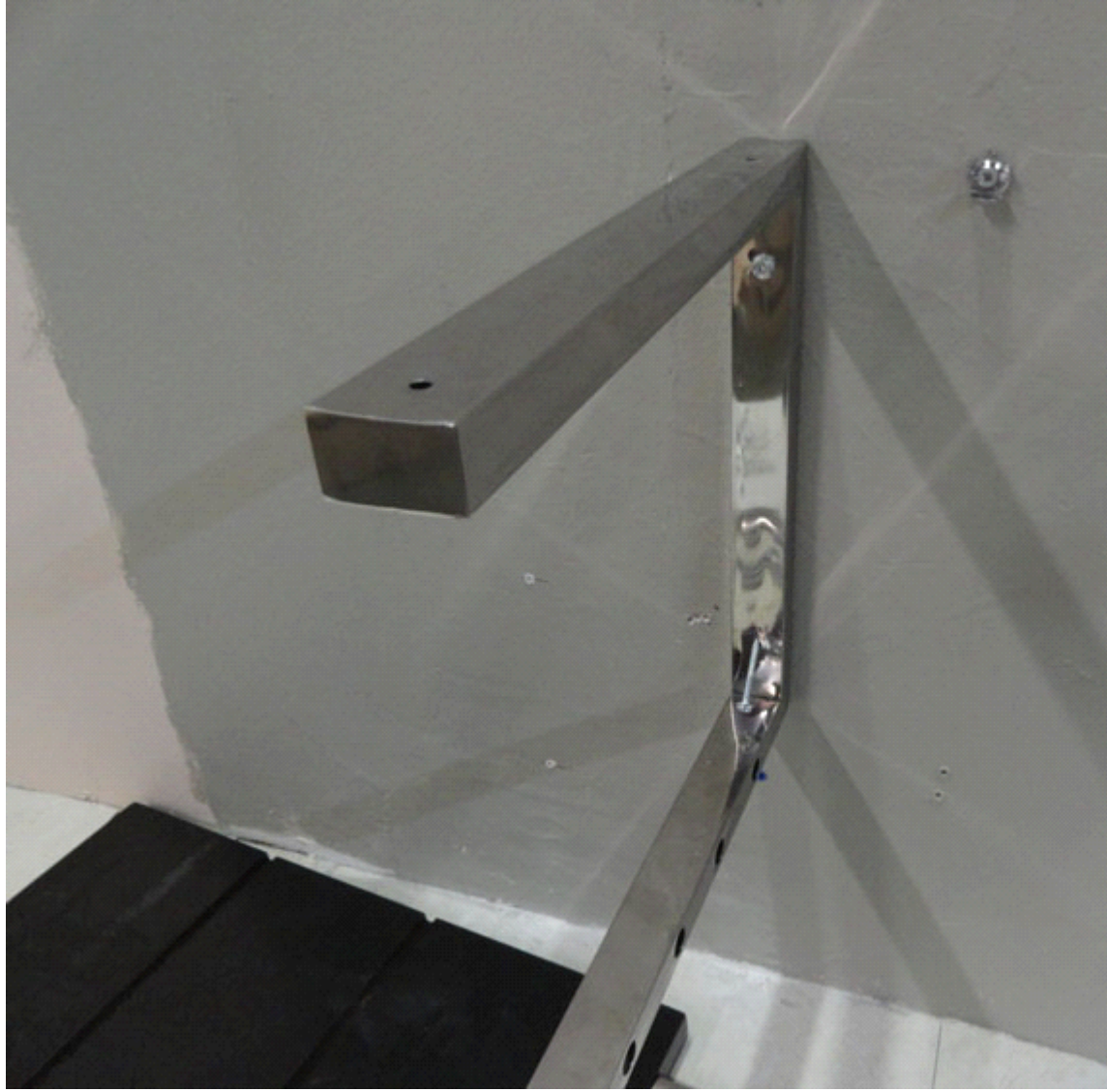
**use screw mount the
frame first**

set up the frame first, position them to where you want to set up the vanity





**use screw mount the
frame first**















the big glass counter can be sit on those 4 metal support

