

English

MULTI-FUNCTIONAL COMPUTER TABLE

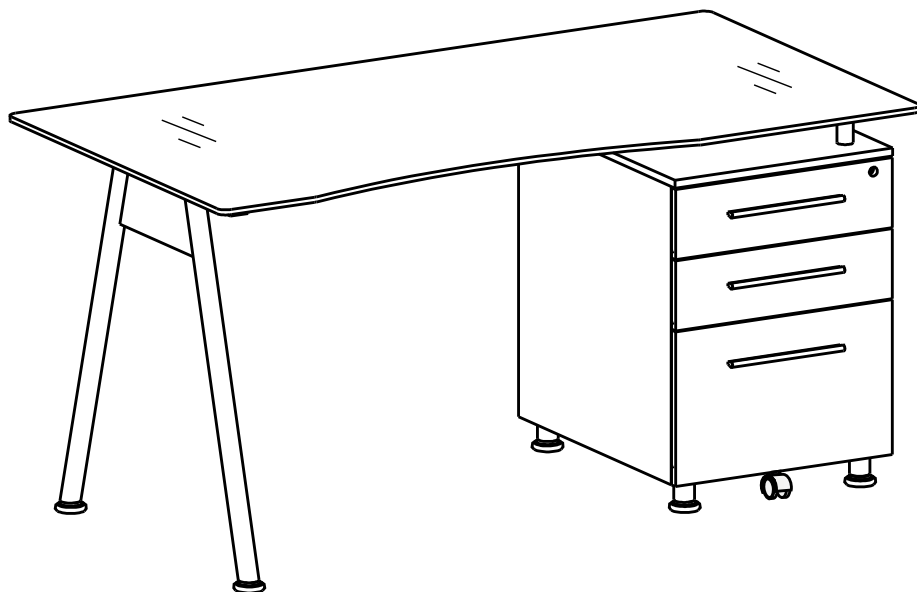
ASSEMBLY INSTRUCTION



MODEL RTA - 1565

IMPORTANT: Surfaces must be cleaned with a solution of a smooth soap and water, then cleared with a dry towel. Do not use solvents over surfaces or structural tubes.

Thanks for purchasing one of our products, please read carefully the assembly instructions before the installation (Attention: Do not tighten the screws before all screws are in place).

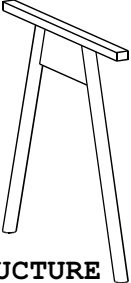
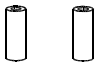
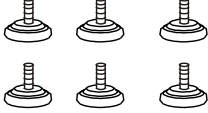
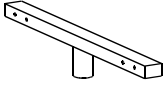
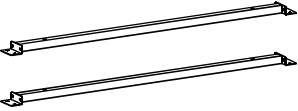
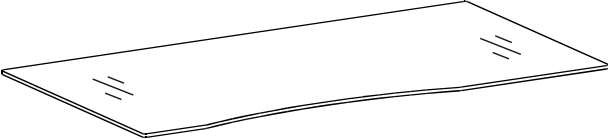
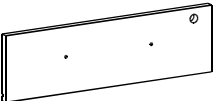
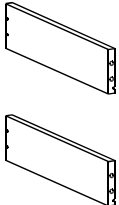
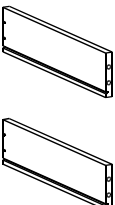
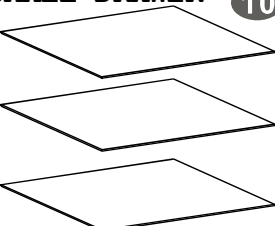
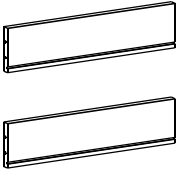
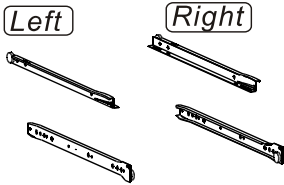
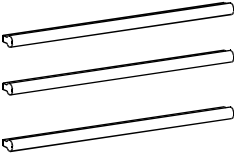
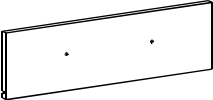
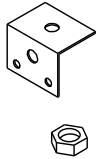
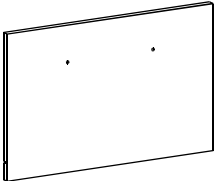
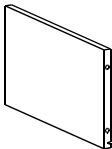
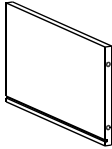
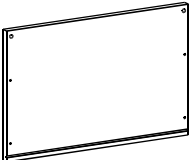


MODEL RTA-1565

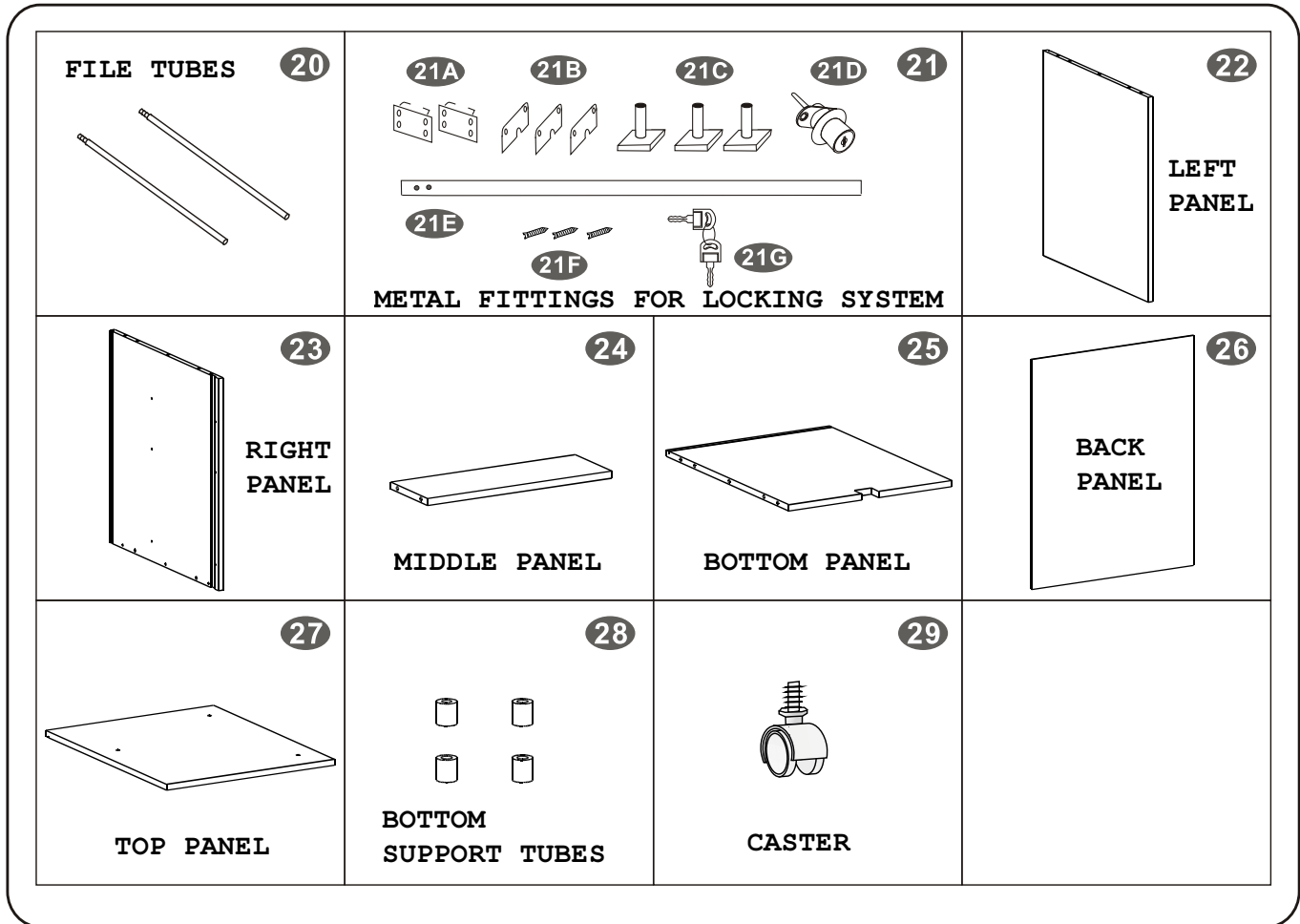




▪PARTS LIST

 <p>1</p> <p>STRUCTURE</p>	 <p>2</p> <p>TOP SUPORT TUBES</p>	 <p>3</p> <p>STUDS</p>	 <p>4</p> <p>"T" TYPE TUBE</p>
 <p>5</p> <p>HORIZONTAL BARS</p>	 <p>6</p> <p>GLASS TABLETOP</p>		 <p>7</p> <p>TOP DRAWER FRONT PANEL</p>
 <p>8</p> <p>SMALL DRAWER</p> <p>LEFT PANEL</p>	 <p>9</p> <p>SMALL DRAWER</p> <p>RIGHT PANEL</p>	 <p>10</p> <p>SMALL DRAWER</p> <p>BOTTOM PANEL</p>	 <p>11</p> <p>SMALL DRAWER</p> <p>BACK PANEL</p>
 <p>12</p> <p>SLIDERS</p> <p>Left Right</p> <p>3SETS</p>	 <p>13</p> <p>HANDLES</p>	 <p>14</p> <p>MIDDLE DRAWER</p> <p>FRONTPANEL</p>	 <p>15</p> <p>WHEEL BRACKET AND NUT</p>
 <p>16</p> <p>BOTTOM DRAWER</p> <p>FRONT PANEL</p>	 <p>17</p> <p>BOTTOM DRAWER</p> <p>LEFT PANEL</p>	 <p>18</p> <p>BOTTOM DRAWER</p> <p>RIGHT PANEL</p>	 <p>19</p> <p>BOTTOM DRAWER</p> <p>BACK PANEL</p>

▪PARTS LIST

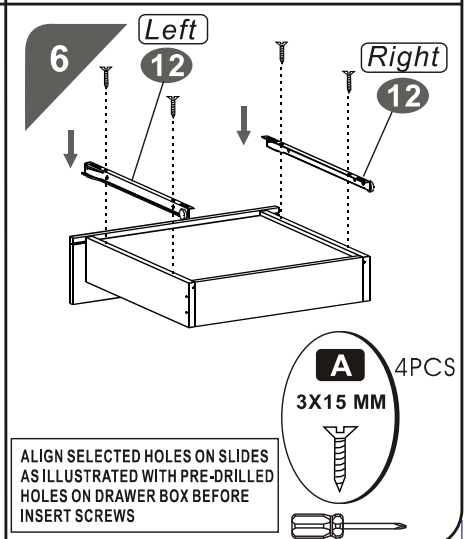
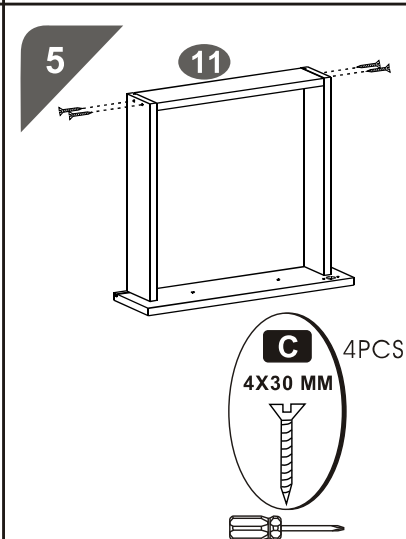
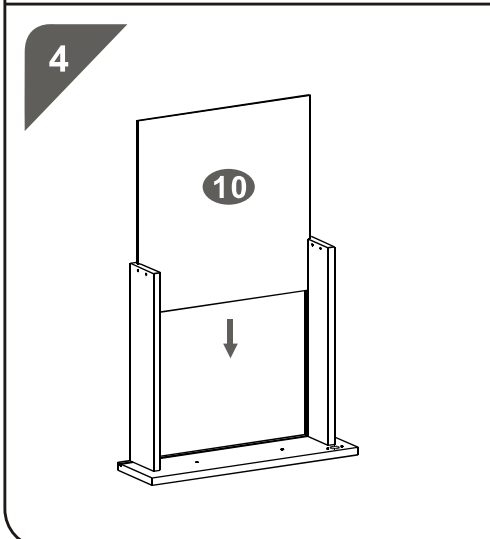
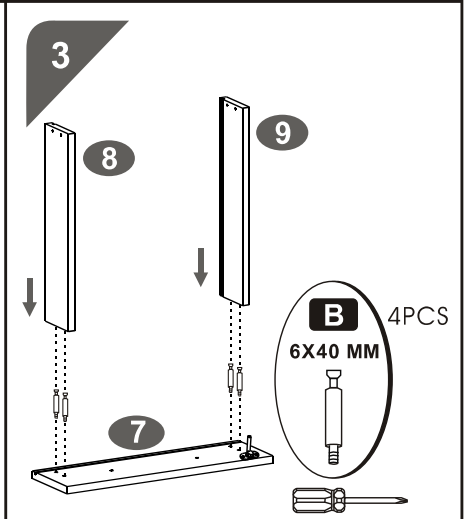
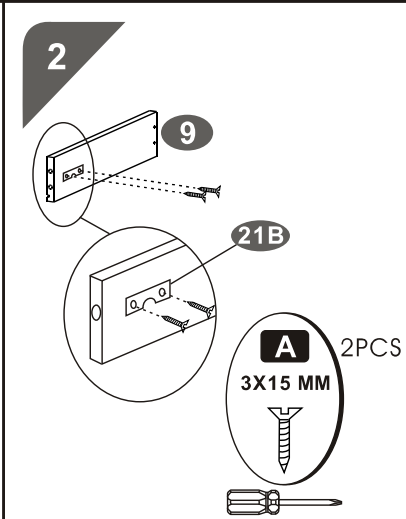
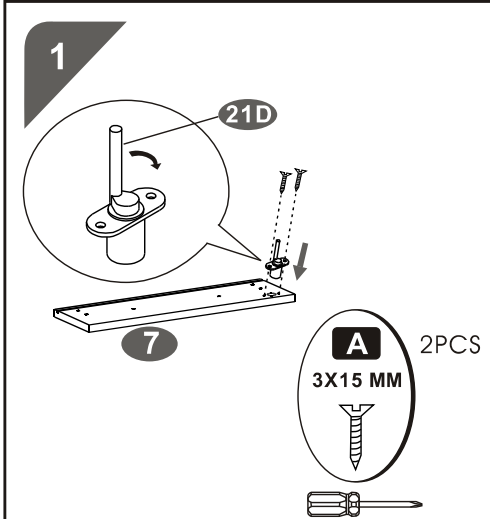
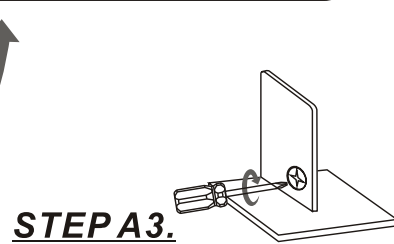
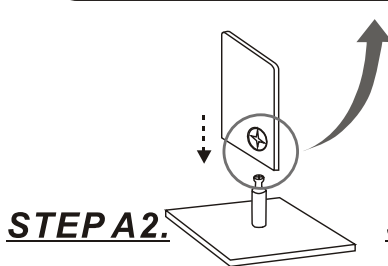
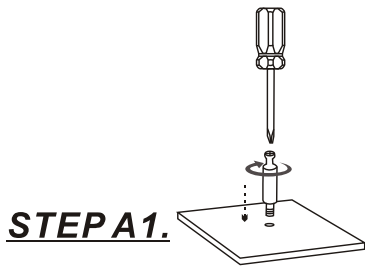
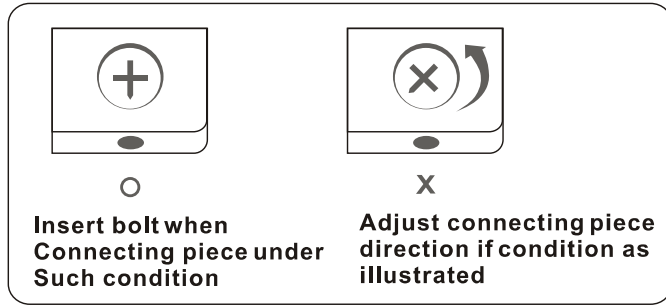
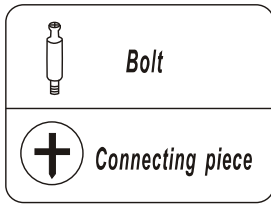


▪SCREWS LIST

PART	QTY.	ITEM	
A	40	3X15 MM	
B	28	6X40 MM	
C	12	4X30 MM	
D	6	4X20 MM	
E	2	4X14 MM	
F	17	6X12MM	

PART	QTY.	ITEM	
G	4	8X30MM	
H	2	6X25 MM	
I	3	6X35 MM	
J	4	6X30 MM	
K	3		
	1		

6x40mm bolt installation as below:



7

D 2PCS
4X20 MM

8

B 4PCS
6X40 MM

9

10

C 4PCS
4X30 MM

11

Left Right

A 4PCS
3X15 MM

ALIGN SELECTED HOLES ON SLIDES AS ILLUSTRATED WITH PRE-DRILLED HOLES ON DRAWER BOX BEFORE INSERT SCREWS

12

D 2PCS
4X20 MM

13

F 1PCS
6X12 MM

E 2PCS
4X14 MM

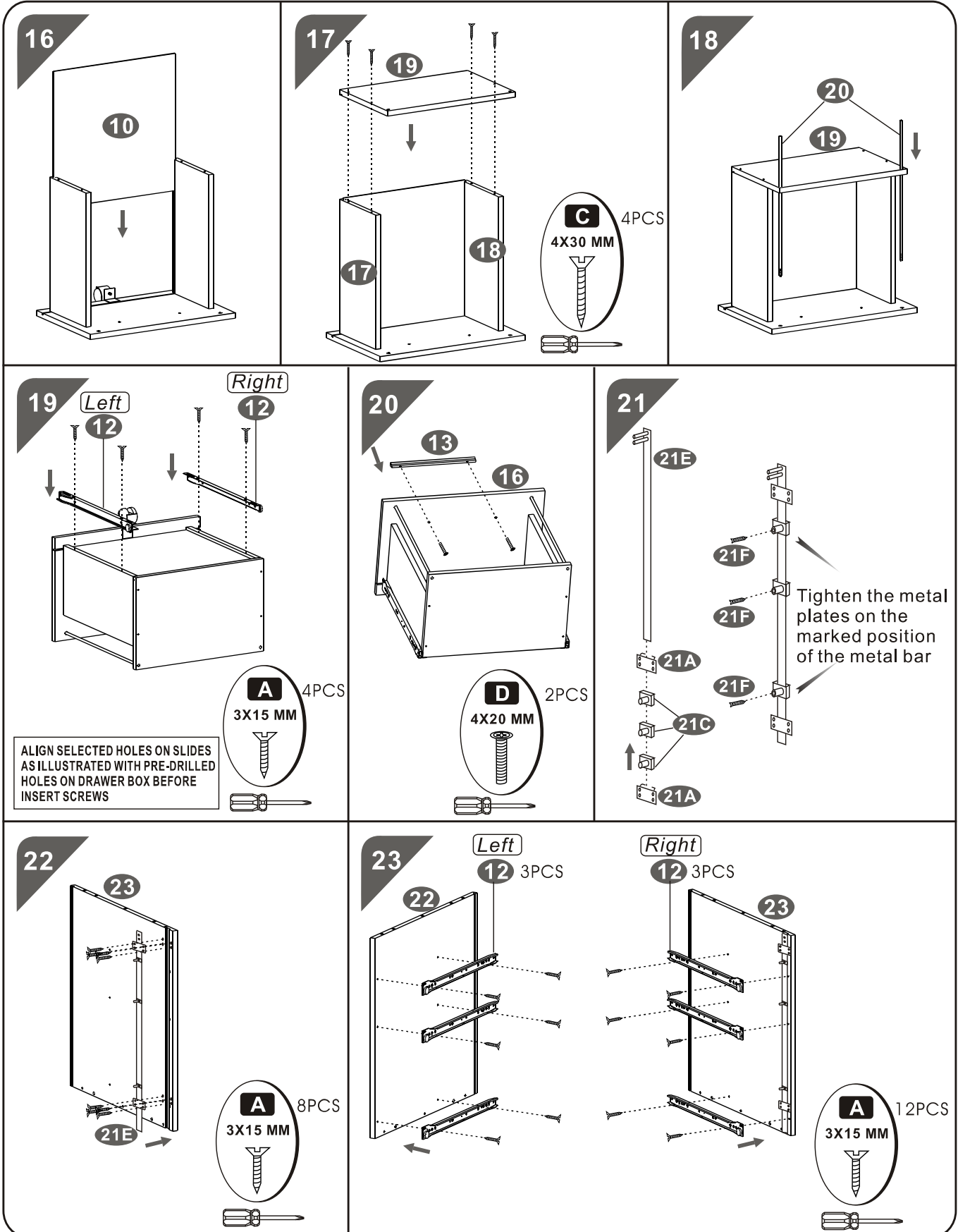
NON-LOCKING CASTER

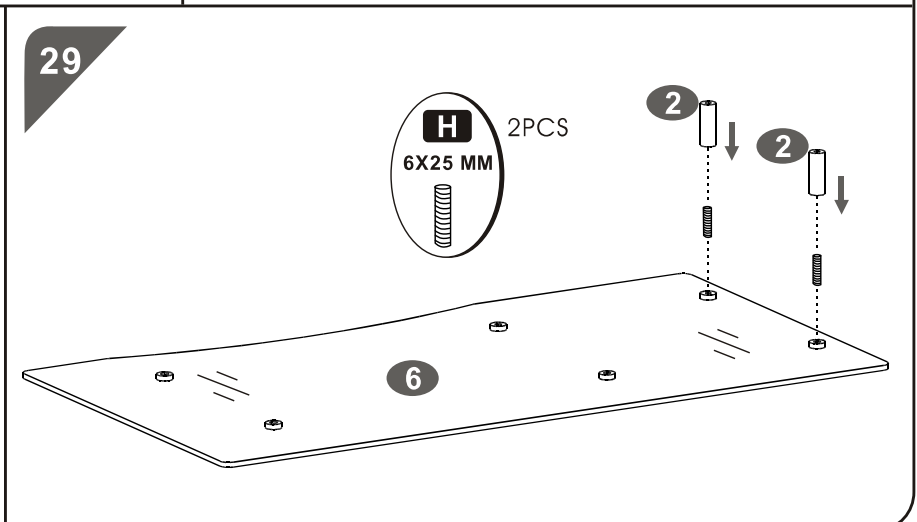
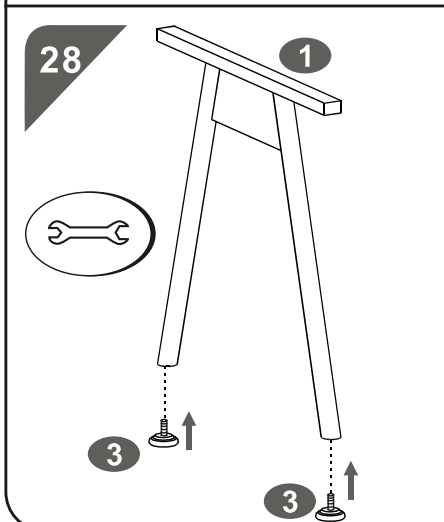
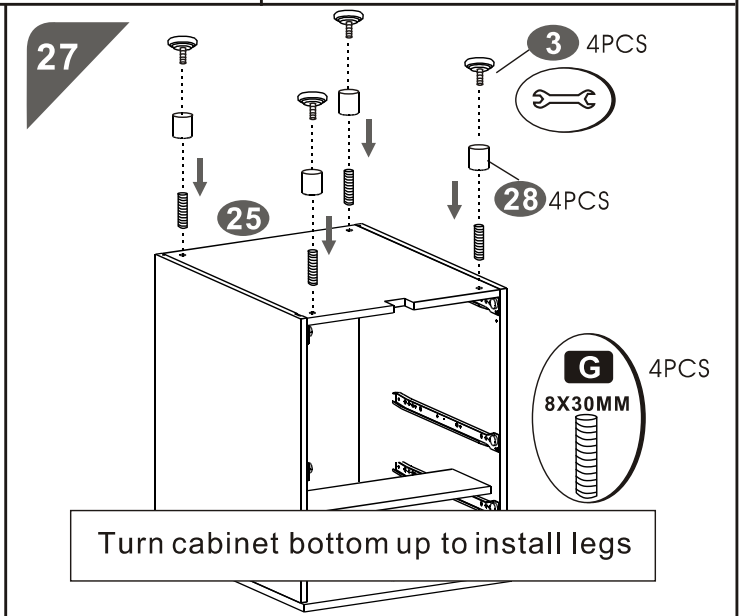
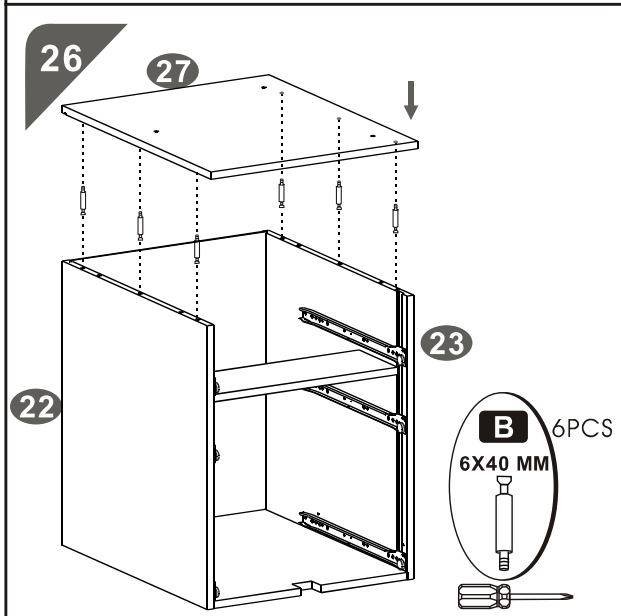
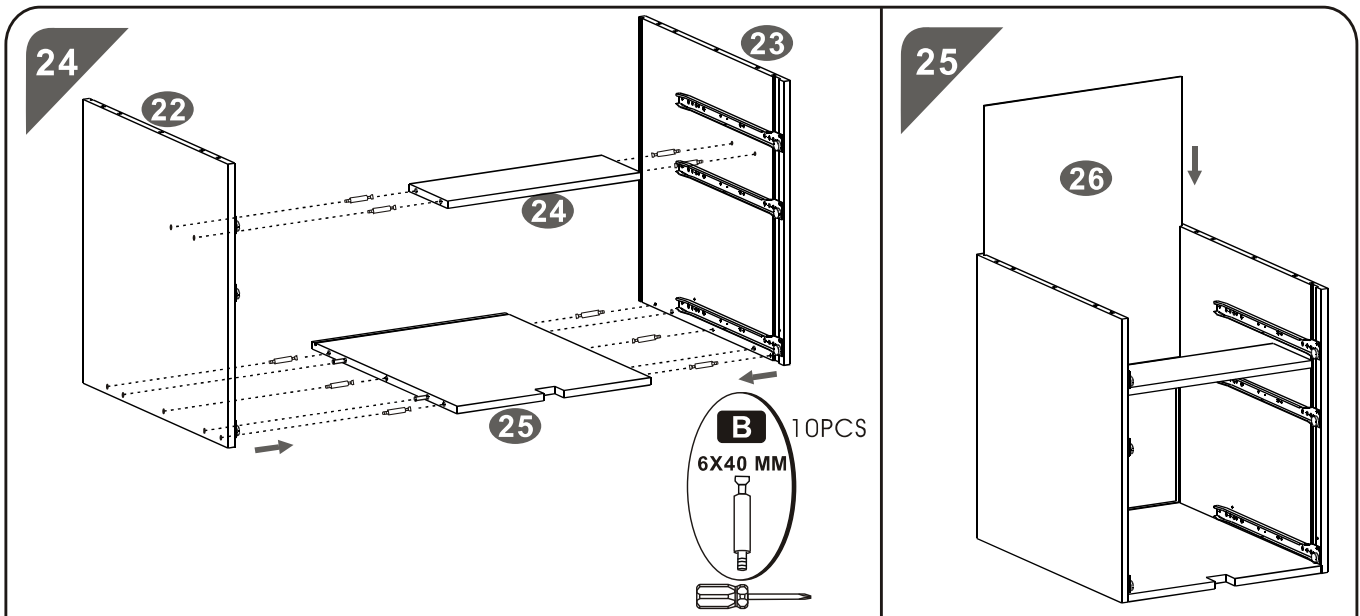
14

A 2PCS
3X15 MM

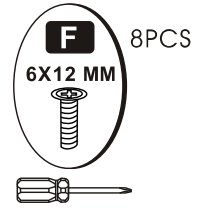
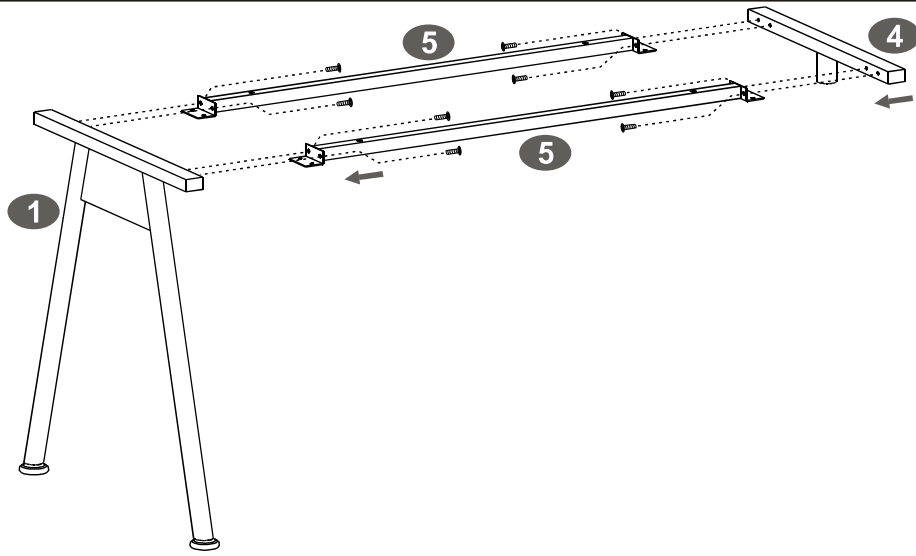
15

B 4PCS
6X40 MM

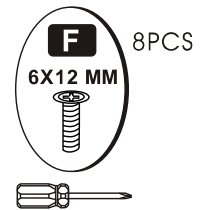
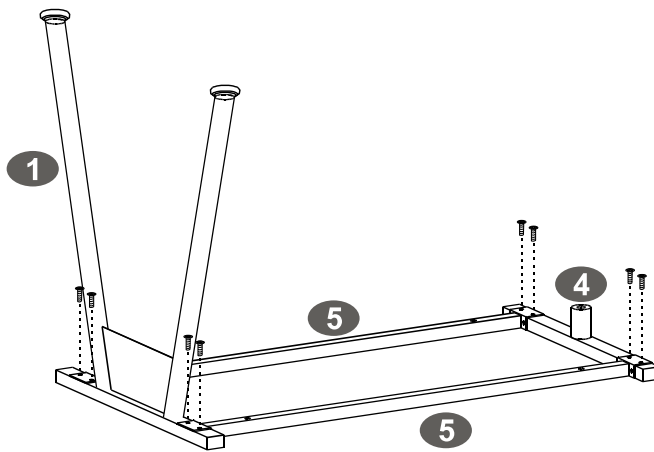




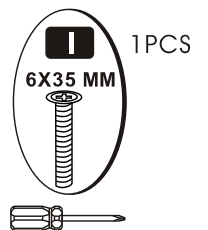
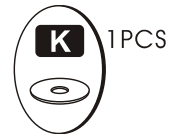
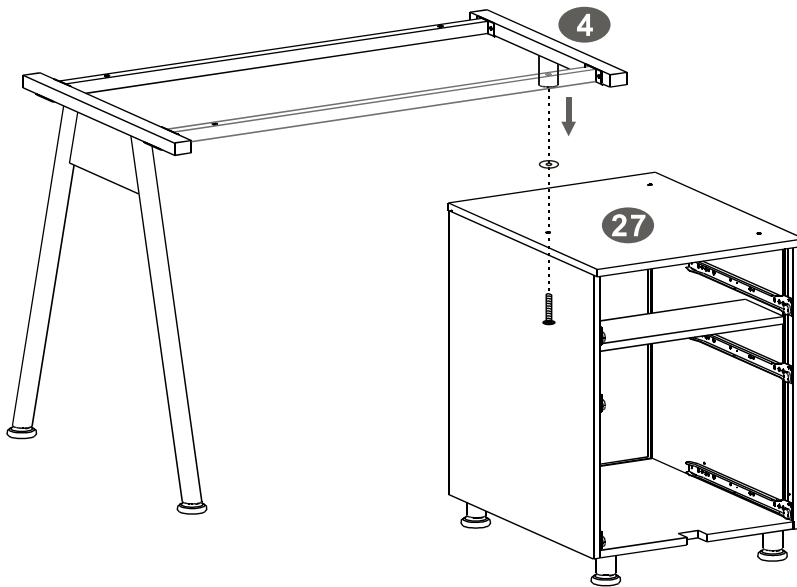
30



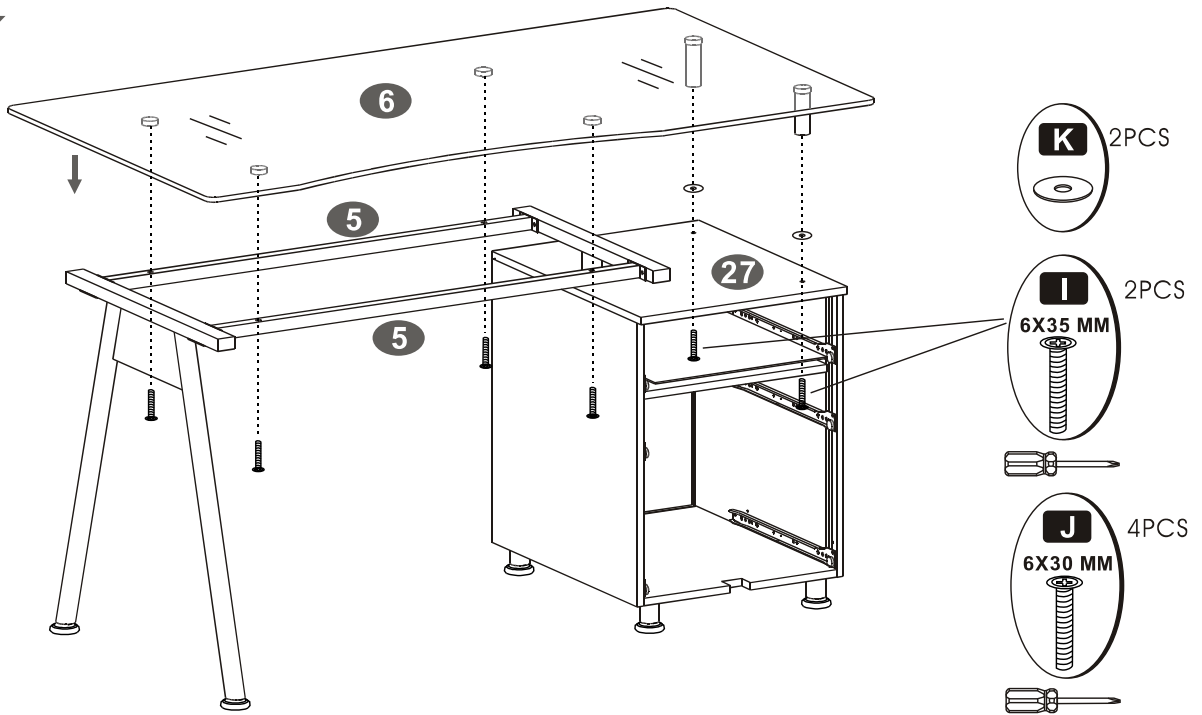
31



32



33



34

