

# Eagle Rural Mailboxes



4855E

## EAGLE RURAL MAILBOXES

### U.S.P.S. APPROVED

Made entirely of aluminum, Salsbury U.S.P.S. approved 4800 series eagle rural mailboxes feature a 1/4" thick decorative eagle door plate, handle and adjustable signal flag available in an attractive powder coated gold or silver finish. Each eagle rural mailbox also features a 1/8" thick extruded aluminum body and a 1/8" thick die cast aluminum rear cover and front door. The die cast door is attached to the body with a full width stainless steel hinge allowing for smooth operation and includes a magnetic door catch. Eagle rural mailboxes feature a durable powder coated finish available in four (4) attractive colors and can be mounted on standard, classic, decorative or deluxe mailbox posts (see pages 76-79), spreaders (see page 76) or a base of your choice. Eagle rural mailboxes are approved for U.S.P.S. curbside mail delivery.

#### 4855E Eagle Rural Mailbox

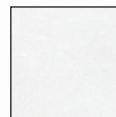
- 7-1/2" W x 9-1/2" H x 20-1/2" D
- 20 lbs.
- \$125.00

**custom**  
Numbers / Letters see page 101

Specify - color



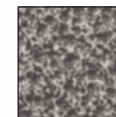
black



white



bronze

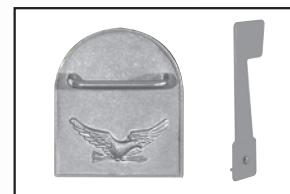


pewter

Specify - decorative eagle door plate, handle and matching flag color



gold finish



silver finish

#4855E and #4815E mounted on a decorative post (#4835 - see page 78) with custom numbers / letters (see page 101) displayed

**Volume Discount Pricing Available On-Line!**

## EAGLE NEWSPAPER HOLDERS

Made of heavy duty aluminum, Salsbury eagle newspaper holders are a unique option for eagle rural mailboxes. Each unit has a solid back and includes mounting hardware to easily attach to mailbox posts and spreaders (see pages 76-79). Eagle newspaper holders feature a durable powder coated finish available in four (4) attractive colors.

### 4815E Eagle Newspaper Holder

- 7-1/4" W x 4-1/2" H x 16" D
- 10 lbs.
- \$50.00

- Specify
- black
  - white
  - bronze
  - pewter



#4855E in a brick column displayed



4815E

COMMERCIAL MAILBOXES

RESIDENTIAL MAILBOXES



**ALL ALUMINUM CONSTRUCTION**

### REPLACEMENT FLAGS

Made of heavy duty 1/4" thick die cast aluminum, eagle mailbox replacement signal flags have a durable powder coated gold or silver finish and easily attach to eagle rural mailboxes. Mailbox flags include stainless steel mounting hardware.

#### 4816E Replacement Flag

- 2-3/4" W x 8" H x 1/4" D
- 1 lb.
- \$15.00

- Specify
- gold finish
  - silver finish



4816E

(2) #4855E's on a 2-sided classic post (#4892 - see page 77) with (2) hanging signature series plaques (#1435 - see pages 92-93) displayed

SIGNAGE

CELL PHONE LOCKERS