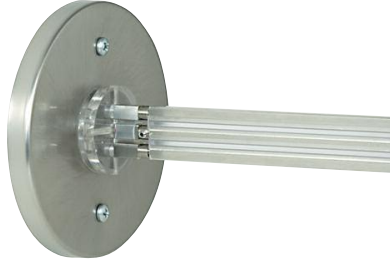
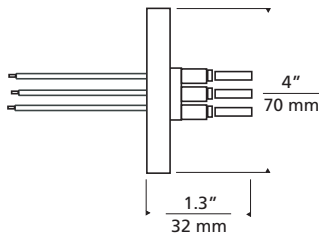


4" Round Direct-End Power Feed



Shown approx. 35% actual size.



DESCRIPTION

A direct-end power feed canopy brings power from a two-circuit remote transformer (sold separately) to the rail at one end of the run and mounts to a wall perpendicular to the run. The low-voltage leads from the remote transformer are connected to the canopy leads inside the junction box. This canopy provides two independent circuits.

INSTALLATION

This product can mount to either a 4" square electrical box with round plaster ring or an octagon electrical box (not included).

FINISH

Antique bronze, chrome, satin nickel.

USAGE

For use with a two-circuit single-feed remote transformer (sold separately).

WEIGHT

0.93 lb./0.43 kg. ±

ORDERING INFORMATION

700MO2P4CD

FINISH

- Z ANTIQUE BRONZE
- C CHROME
- S SATIN NICKEL



7400 Linder Avenue T 847.410.4400
 Skokie, Illinois 60077 F 847.410.4500

www.techlighting.com

700MO2P4CD _____

FIXTURE TYPE: _____

JOB NAME: _____

mo2_4rnd_dirnd_pwrfd_spec.pdf

