

Kable Lite Bugs

700KBUG_ 1.6

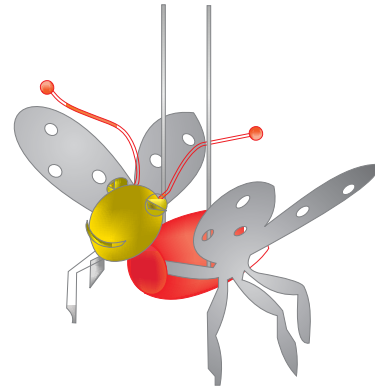


GENERAL PRODUCT INFORMATION:

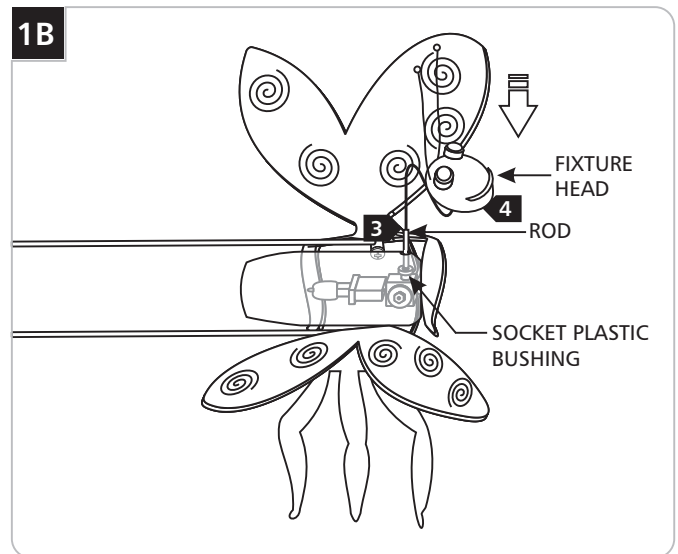
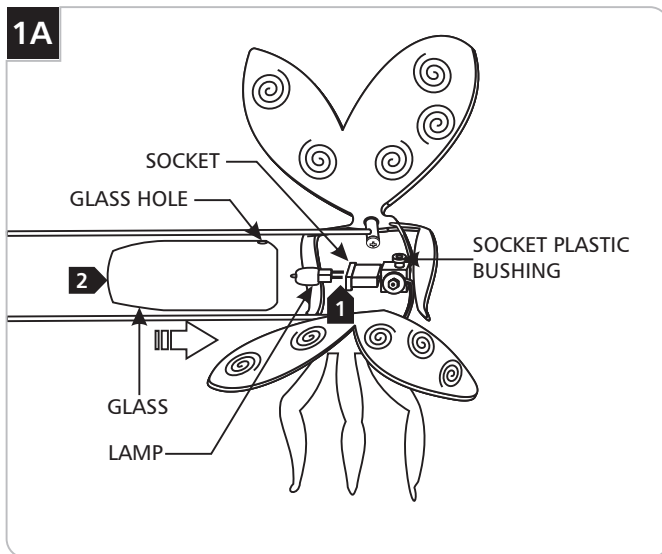


This product is suitable for indoor dry locations only.

This product should be used with Tech Lighting Kable Lite system only.



Installing the Lamp



CAUTION: To reduce the risk of a burn or electric shock during relamping, disconnect the power to the fixture.

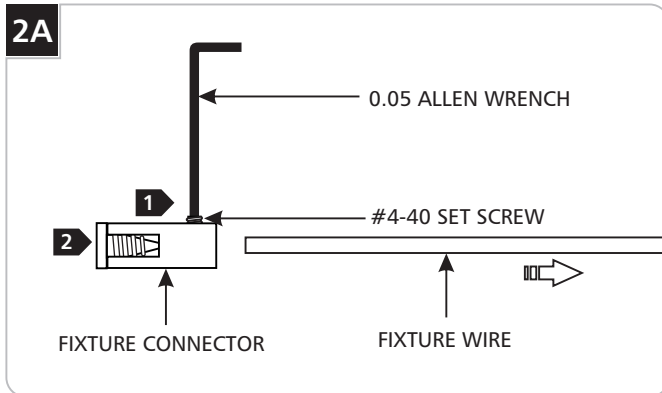
NOTE: Use only your fingers and a soft cloth to replace the lamp.

Use **MAX 20 Watt, Bi-Pin Halogen Lamp.**

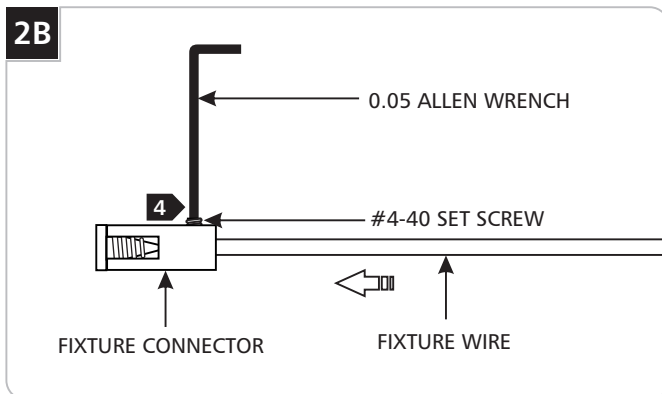
- 1** Gently insert the lamp pins completely into the socket holes.
- 2** Slide the glass onto the socket and align the glass hole with the socket plastic bushing.

- 3** Push the close end of the rod through the glass hole all the way into the socket plastic bushing.
- 4** Push the fixture head wire all the way into the rod.

Resizing Fixture Wires (If Necessary)

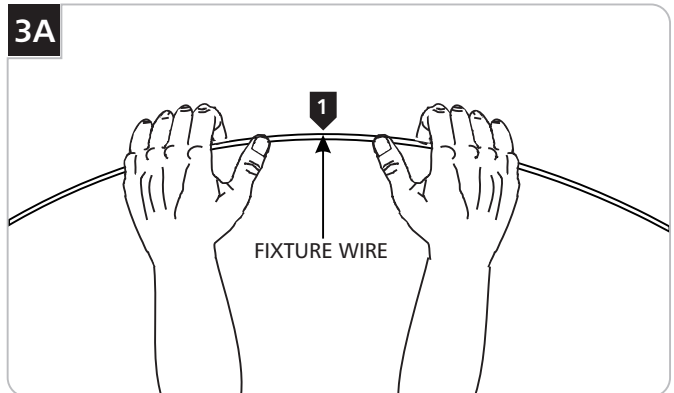


- 1 Loosen (Do Not Remove) the #4-40 set screw on the fixture connectors with the 0.05 Allen wrench.
- 2 Remove the fixture connectors.
- 3 Cut the wires to the desired length with a sharp cutter.



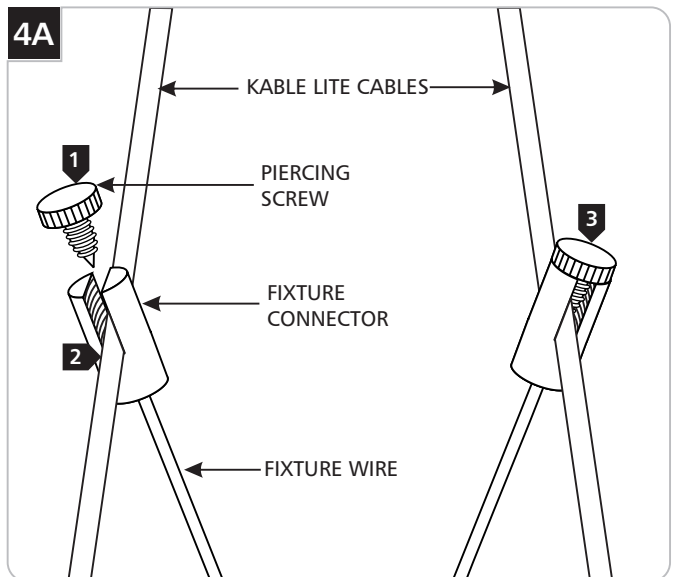
- 4 Feed the fixture wires into the fixture connector holes and tighten the #4-40 set screw with the 0.05 Allen wrench.

Shaping the Fixture Wires (If Necessary)



- 1 Bend the fixture wires to the desired shape by hands.

Hanging the Bug



- 1 Loosen and remove the piercing screws from tip of the fixture connectors.
- 2 From bottom of the Kable Lite cables, feed one fixture connector onto each Kable Lite cable.
- 3 Replace and tighten the piercing screw on the fixture connectors.

IMPORTANT SAFETY INSTRUCTIONS

To reduce the risk of fire, electrical shock, exposure to excessive UV radiation, or injury to person:

- Use this fixture indoors only.
- Do not look directly at the lighted lamp.
- Do not remain in light if skin feels warm.
- Risk of fire: Use only the type of lamp and maximum wattage indicated in this instruction manual.
- Never cover the halogen lamp with anything other than a Tech Lighting lamp shield and never place flammable material close to your fixture.
- Never turn the fixture on and off by connecting and disconnecting the halogen lamp.
- Do not touch the fixture shades or lamp shield while the fixture is on. These surfaces may be HOT.

Halogen Lamp General Information

- A new halogen lamp may smoke slightly when it is used for the first time. This is perfectly normal; the protective coating is simply being vaporized.

Two Tips For Prolonging Halogen Lamp Life

- First avoid touching the lamp with bare hands during installation. Any contaminant, even the oil from your hands can deteriorate the lamp. Rubbing alcohol can be used to remove any contaminant.
- Second, do not run the lamps at full power when you do not need to. However, if dimming the fixture for an extended period of time, occasionally bring the light up to full brightness for a few minutes to complete the halogen cycle.

SAVE THESE INSTRUCTIONS!



7400 Linder Ave, Skokie, IL 60077
847.410.4400

www.techlighting.com

© 2008 Tech Lighting, L.L.C. All rights reserved. The "Tech Lighting" graphic is a registered trademark of Tech Lighting, L.L.C. Tech Lighting reserves the right to change specifications for product improvements without notification.
A Generation Brands Company