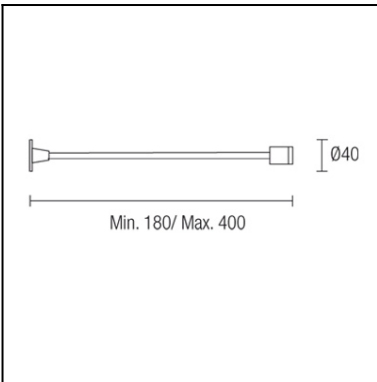
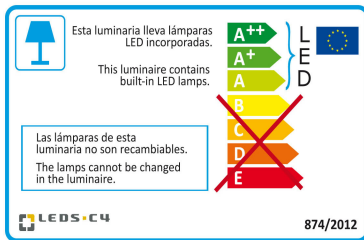


The photograph may not match the reference exactly. Please read the product description to identify the finish.



[Download photometric file .ldt / .ies](#)



[Click on image to download energy label](#)

## Description

Wall recess mounted fitting made of anti-corrosion treated metal. Decorative surround in grey/silver epoxy finish metal plate. Anodised matt aluminium asymmetric reflector and transparent tempered glass. Available in three versions according to size and light source. For halogen lamps, compact fluorescent lights and T5 fluorescent lights (ballast included).

## TECHNICAL CHARACTERISTICS

Type:	Wall fixture
IP Protection degrees:	IP20
Light source 1:	1 x LED Cree 1,2W Warm White - 3000K 107 lm <sup>(N)</sup> CRI 80
Angle of the optics / Reflector:	15°
Voltage / Frequency:	100-240V/50-60Hz
Warranty (Years):	2
Option to extend the guarantee (Years):	5
Units per box:	50
Net Weight (Kg):	0.14
EAN:	8435111066294



## MATERIALS / FINISHES

**Structure material:** Anodized aluminium

## GEAR

Multi-voltage electronic gear included (110-240 V / 50-60 Hz)

Lm<sup>(N)</sup>: Nominal flow of light in actual working conditions. Its actual flow will depend on the environmental conditions and the efficiency of the optics and/or diffuser.

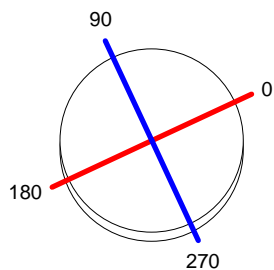
LEDS-C4 reserves the right to make the necessary technical changes they deem adequate, in order to improve the features of the product.

Please consult the sales team to clarify any doubt.

Luminaire		Measur.		Lamp	
Code	05-2835-54-54	Code	05-2835-54-54	Code	LAMP 05-2835-54-54
Name	Aplique WALL 1x1.2W led prisma	Name	Aplique WALL 1x1.2W led prisma	Number	1
Line	Eulumdat	Date	26-07-2010	Position	
Efficiency	100.00%	Coordinate system	CG	Total Flux	39.45 lm
Maximum value	334.99 cd	Position	C=0.00 G=0.00	Double Symmetrical	
Round Luminaire	Diam.	24 mm	Height	28 mm	
Round Luminous Area	Diam.	17 mm	Height	1 mm	
Horizontal Luminous Area	0.000227 m2	Emitting area on Plane 180°	0.000017 m2		
Emitting area on Plane 0°	0.000017 m2	Emitting area on Plane 270°	0.000017 m2		
Emitting area on Plane 90°	0.000017 m2	Glare area at 76°	0.000071 m2		
Symmetry Type	Double Symmetrical	Maximum Gamma Angle	90		
Measurement Distance	0.00	Measurement Flux	39.45 lm		
Operator	Asselum	Source voltage			
Temperature	25.00 °C	Source current			
Humidity	60.00 %	Photocell			
Notes					

Luminaire Lamps						
Line	Code	Name	Flux [lm]	Pow. [W]	Q.ty	
Eulumdat	LAMP 05-2835-54-54	LAMP 05-2835-54-54 - 1.00 W	39.45	1.00	1	
C.I.E.	97 99 100 100 100	D DIN 5040	A60			
F UTE	1.00 A	B NBN	BZ 1			

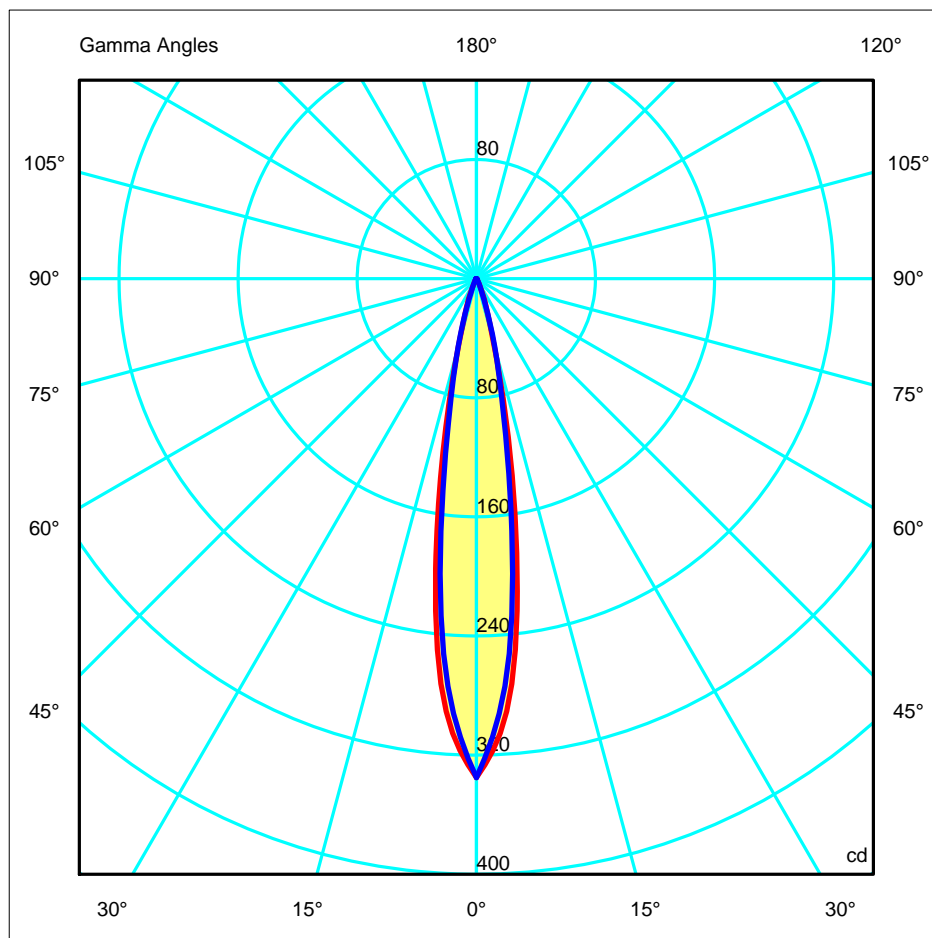
Diam=24mm

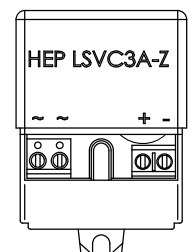
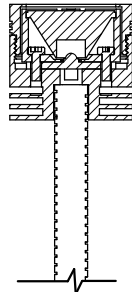
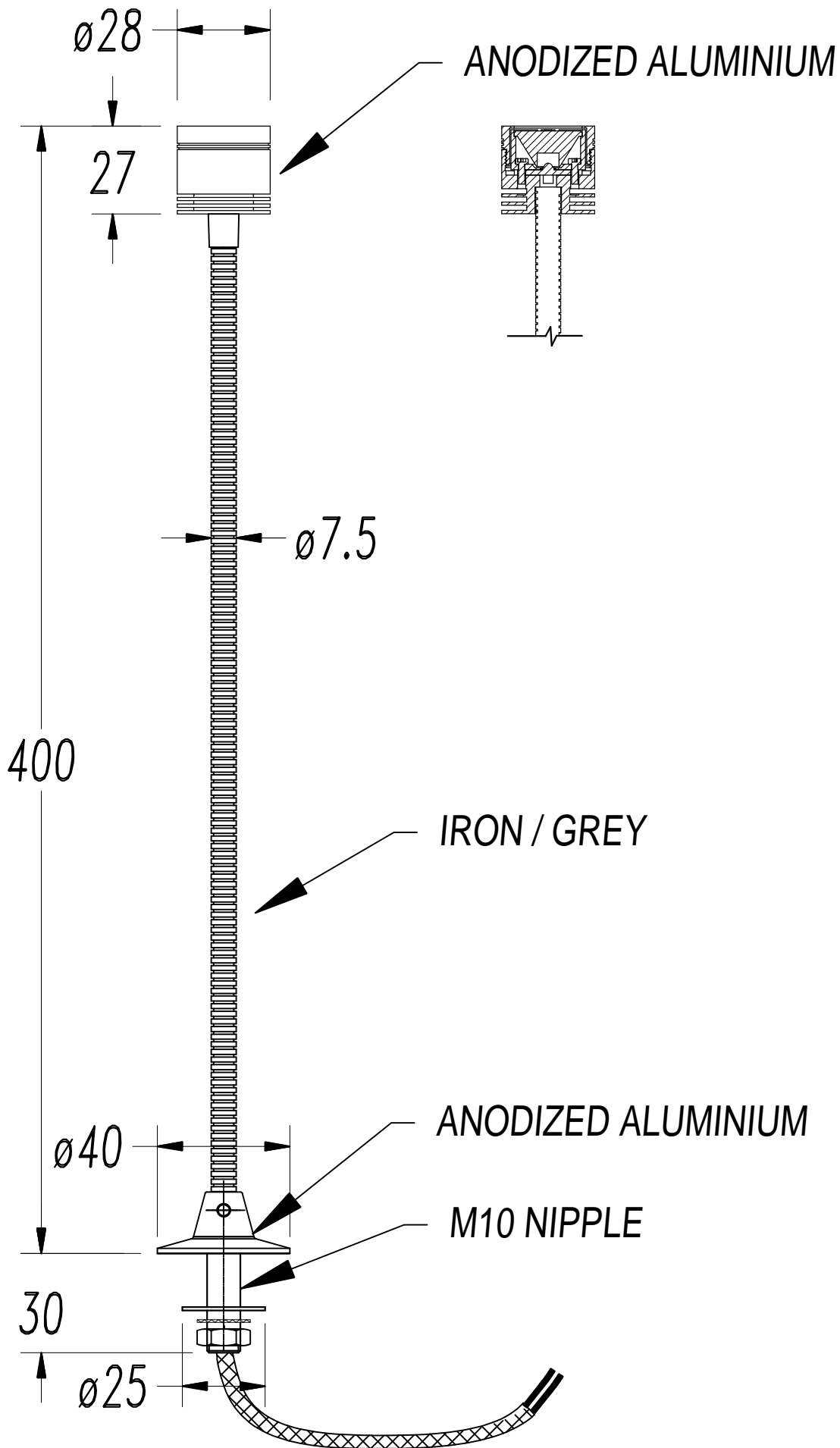


C Halfplanes

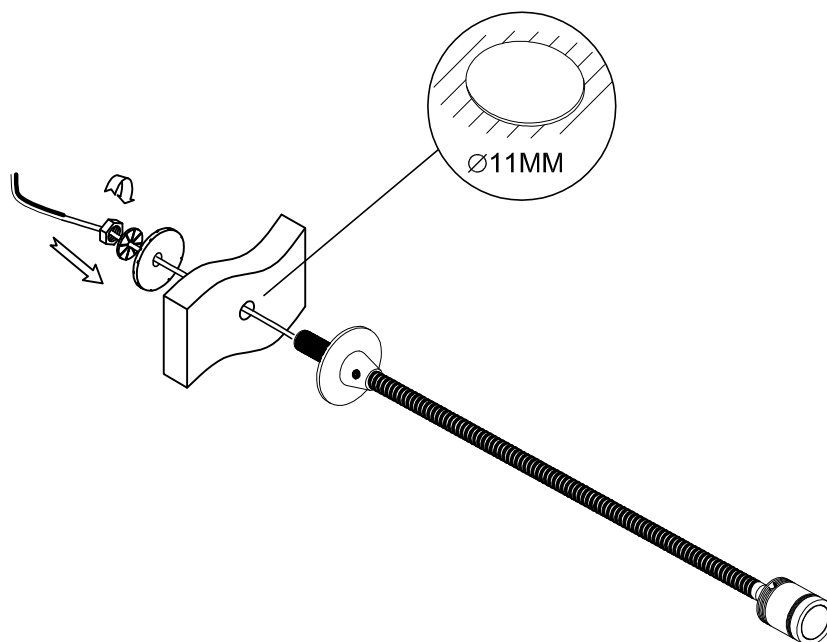
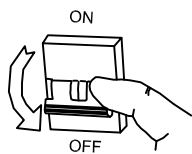
180.0 — 0.0  
270.0 — 90.0

ULOR 0.00 %  
DLOR 100.00 %  
RN 0.00 %

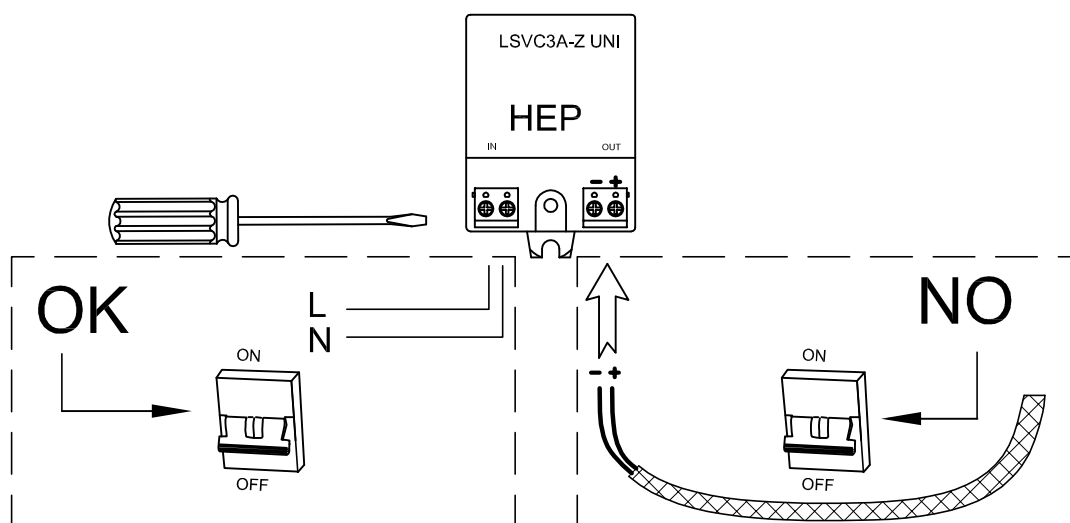




**1**



**2**



**3**

