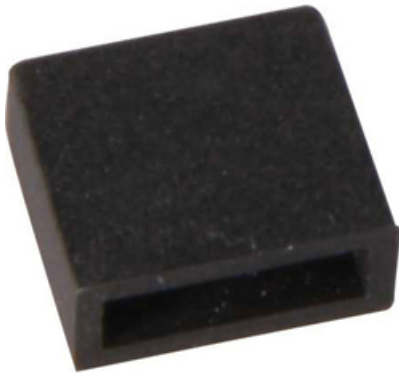




Product Specifications for E53269

Job Name:	Job Type:
Quantity:	Comments:



E53269
StarStrand 4-Pin Silicone End Cap (10/PK)

Finish

Glass/Shade

Product Category
LED Tape Accessory

Lamping

Number of Bulb(s)	N/A
Light Type	N/A
Bulb Type	
Max Bulb Wattage	N/A
Max Fixture Wattage	
Rated Life	N/A
Rated Lumens	N/A
Color Temp	N/A
Bulb(s) Included	No
Light Up/Down	N/A
Beam Spread	N/A
CRI	N/A
Photo Cell Included	N/A
Ballast/Driver/Transformer	No
Dimmable	N/A

Measurements

Width	0.50"
Height	0.10"
Length	0.75"
Extension	N/A
Back Plate Width	N/A
Back Plate Height	N/A
HCO	N/A
Min Overall Height	N/A
Max Overall Height	N/A
Hanging Weight	0.07 lb(s)
Height Adjustable	N/A
Slope	N/A
Chain Length	N/A
Wire Length	N/A
Canopy Width	N/A
Canopy Height	N/A
Canopy Length	N/A

Shipping

Carton Weight	0.10 lb(s)
Carton Width	3.39"
Carton Height	2.37"
Carton Length	4.53"
Carton Cubic Feet	N/A
Master Pack	10
Master Pack Weight	1.07 lb(s)
Master Pack Width	13.99"
Master Pack Height	9.85"
Master Pack Length	18.12"
Master Cubic Feet	N/A
UPS Shippable	Yes

Certification

Safety Rating	DRY
Energy Star	No
CA Title 24	No
CA Title 20	No
ADA	No

Other

UPC Code	845094026976
Material	N/A

Equivalents

Incandescent Watts	N/A
Fluorescent Watts	N/A

ET2 Contemporary Lighting and all designs, logos and images © 2013 ET2 Contemporary Lighting. All Rights Reserved. ET2 Contemporary Lighting reserves the right, at any time, to make changes in the design and/or construction of the product including the discontinuation of product without prior notice. Color may vary from what is pictured above due to limitations inherent to photographic processes. Always consult a qualified, licensed electrician before installation of any product weighing 35 pounds or more. We recommend that a qualified, licensed electrician do the installation. Always install to a mechanically sound structure.