

QUATTRO

FR49458BNI



Bulbs: 75W MED.

Replacement Parts: SHADES: R49450SH, R49458SH

DIFFUSER: R49450DF, R49458DF

ASSEMBLY INSTRUCTIONS

Assembly of this fixture will be accomplished by first assembling the main body, installing the mounting hardware to the junction box, making all necessary electrical connections, hanging the fixture and then attaching the fixture shades.

SAFETY WARNING: Read wiring and grounding instructions [FRIS 18] and any additional directions. Turn power supply off during installation. If new wiring is required, consult a qualified electrician or local authorities for code requirements.

STEP 1

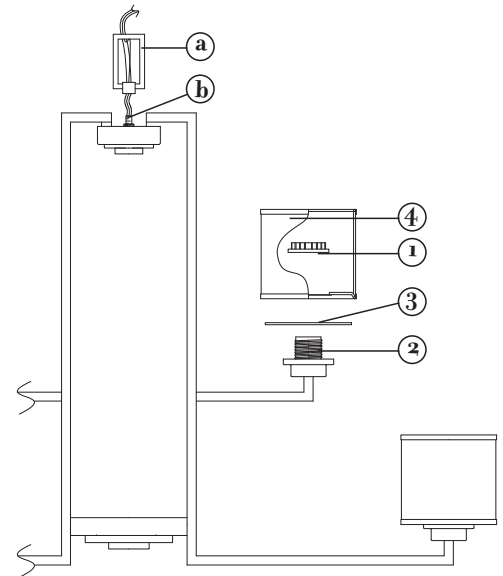
- 1 Slip loop (a) along wire and thread onto tubing (b).

STEP 2 Refer to Hanging Instruction Sheet [FRIS19] to hang fixture. Then refer back to this sheet to install shades.

STEP 3

- 1 To install acrylic lens and shade, remove socket ring (1) from threaded socket (2).
- 2 Slip lens (3) over threaded socket (2).
- 3 Slip shade (4) over threaded socket (2). Making sure acrylic lens (3) seats properly in the bottom of shade (4).
- 4 Thread socket ring (1) onto socket (2) and tighten to secure parts.
- 5 Fixture can now be lamped accordingly.

[DRAWING 1]



FREDRICK RAMOND

ESTABLISHED 1965

800.421.3517 WWW.FREDRICKRAMOND.COM

2.23.10