

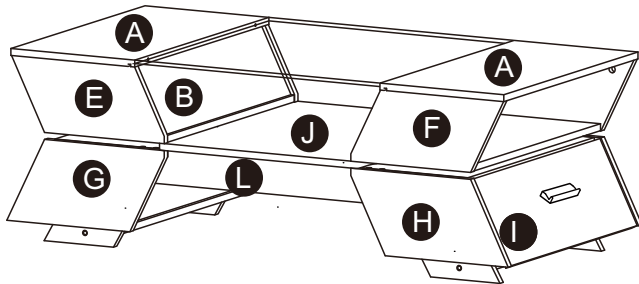
# COFFEE TABLE

## ASSEMBLY INSTRUCTIONS

MODEL # YNJ-128-2

Please keep for future reference

### PARTS LIST



ITEM OVERSIZE: 47.01"(W)\*23.62"(D)\*16.81"(H)

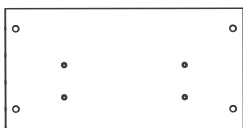
**A** 2PCS



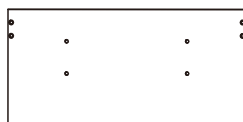
**C** 2PCS



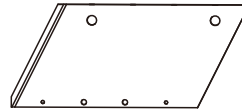
**B** 2PCS



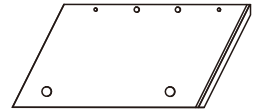
**D** 2PCS



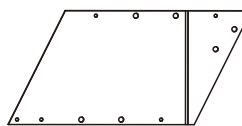
**E** 2PCS



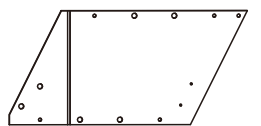
**F** 2PCS



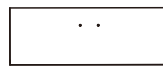
**G** 2PCS



**H** 2PCS



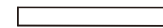
**I** 2PCS



**J** 1PCS



**K** 2PCS



**L** 2PCS



**M** 2PCS



**N** 2PCS



**O** 2PCS



**P** 2PCS



**Q** 1PCS (glass)



### HARDWARE LIST

**1** 32 PCS CAM LOCK PIN



**2** 32 PCS CAM LOCK NUT



**3** 36 PCS WOOD DOWEL



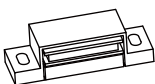
**4** 20PCS ALEN WOOD BOLT



**5** 2 PCS METAL PLATE



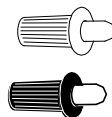
**6** 2 PCS MAGNET UNIT



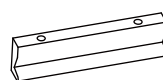
**7** 4 PCS GLASS BRACE



**8** 2 SETS



**9** 2 PCS HANDLE



**10** 2 PCS SHORT-SIZE WOOD SCREW



**11** 4 PCS (for handles) PHILIP HEAD BOLT



**12** 4 PCS WOOD SCREW



**13** 8 PCS ALEN WOOD BOLT



**14** 8 PCS SHORT WOOD DOWEL



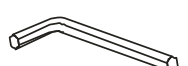
**15** 1 PCS GLUE



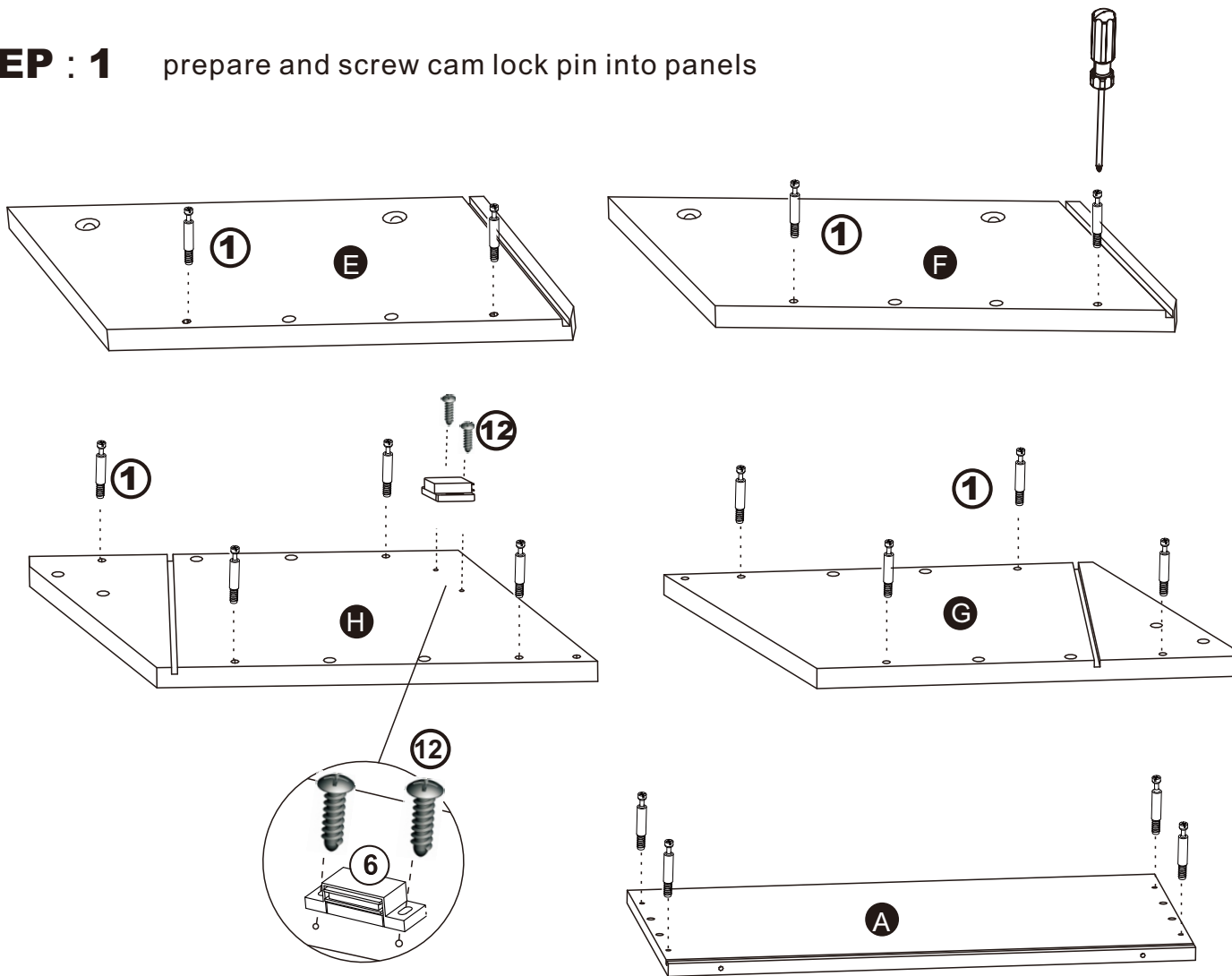
**16** 4 PCS FOOT CAP



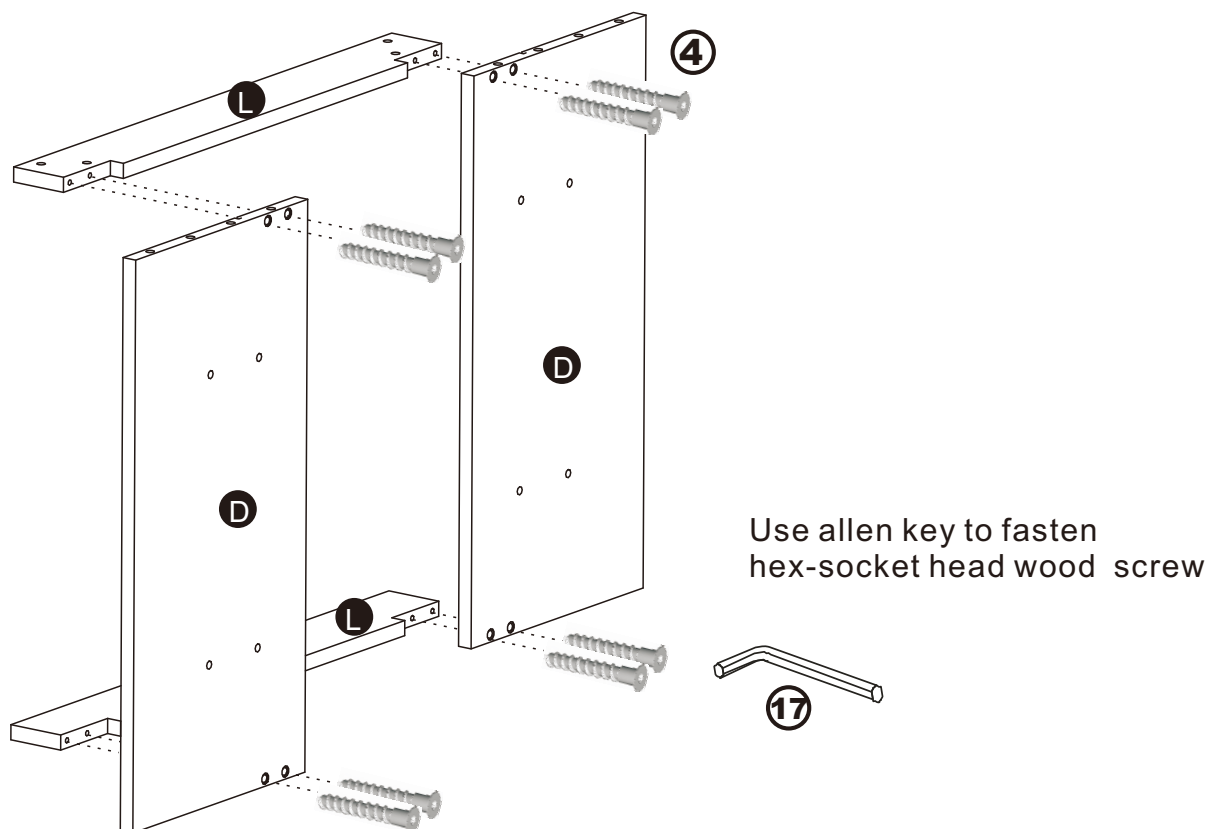
**17** 1 PCS GLUE



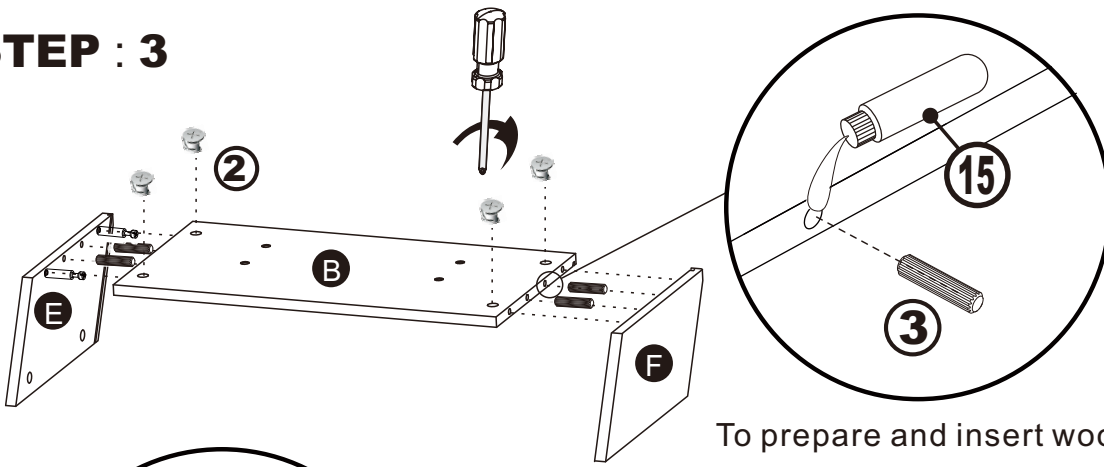
**STEP : 1** prepare and screw cam lock pin into panels



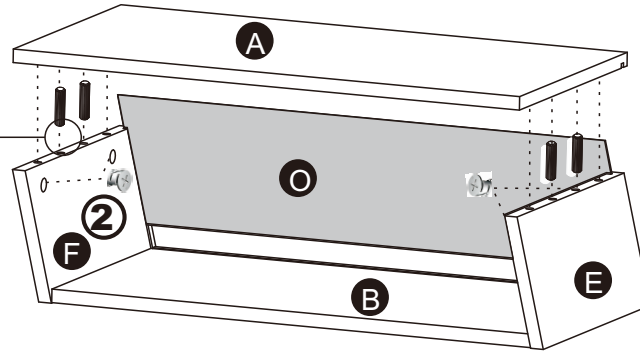
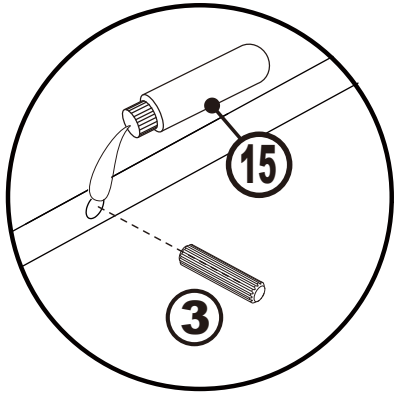
**STEP : 2**



### STEP : 3



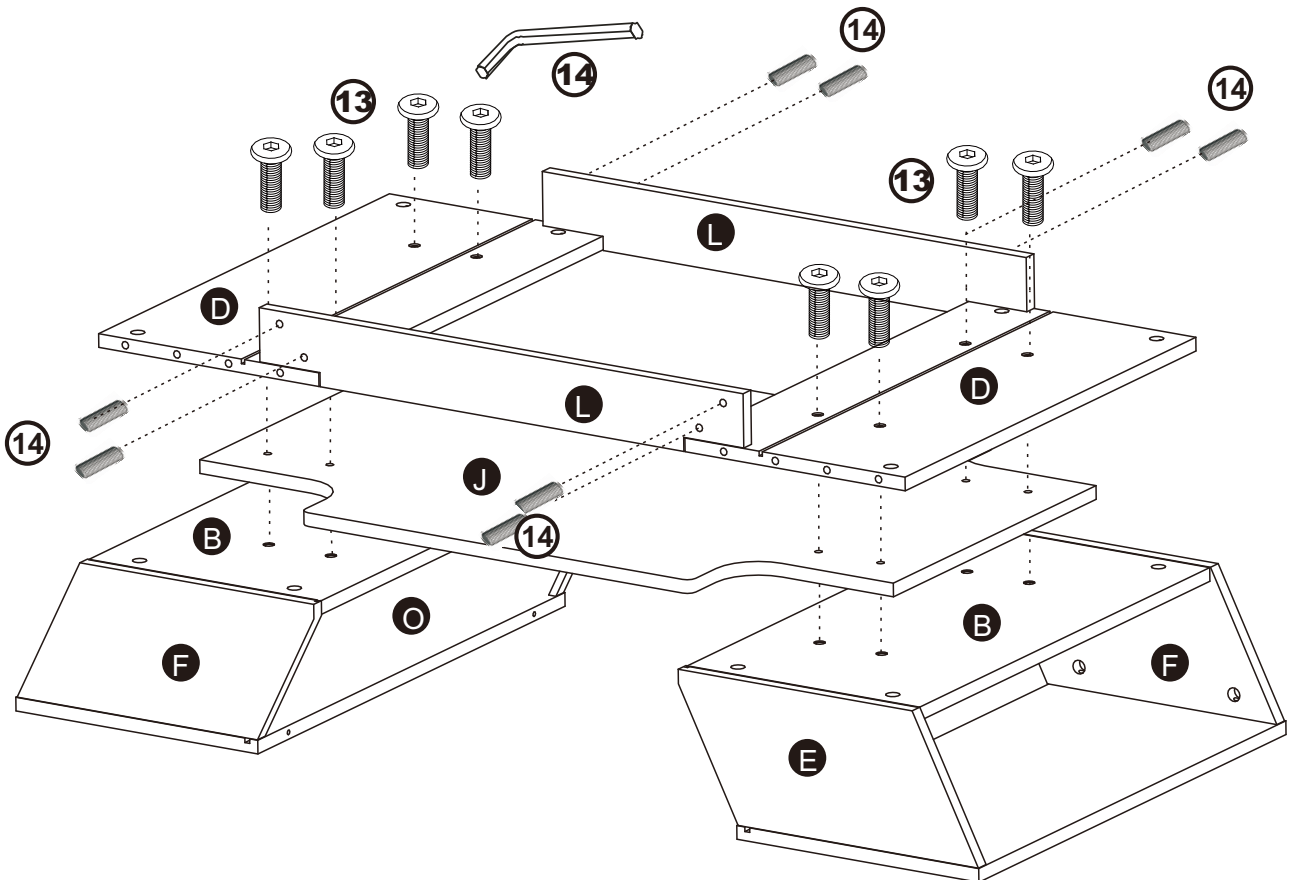
To prepare and insert wood dowels to panels **B**



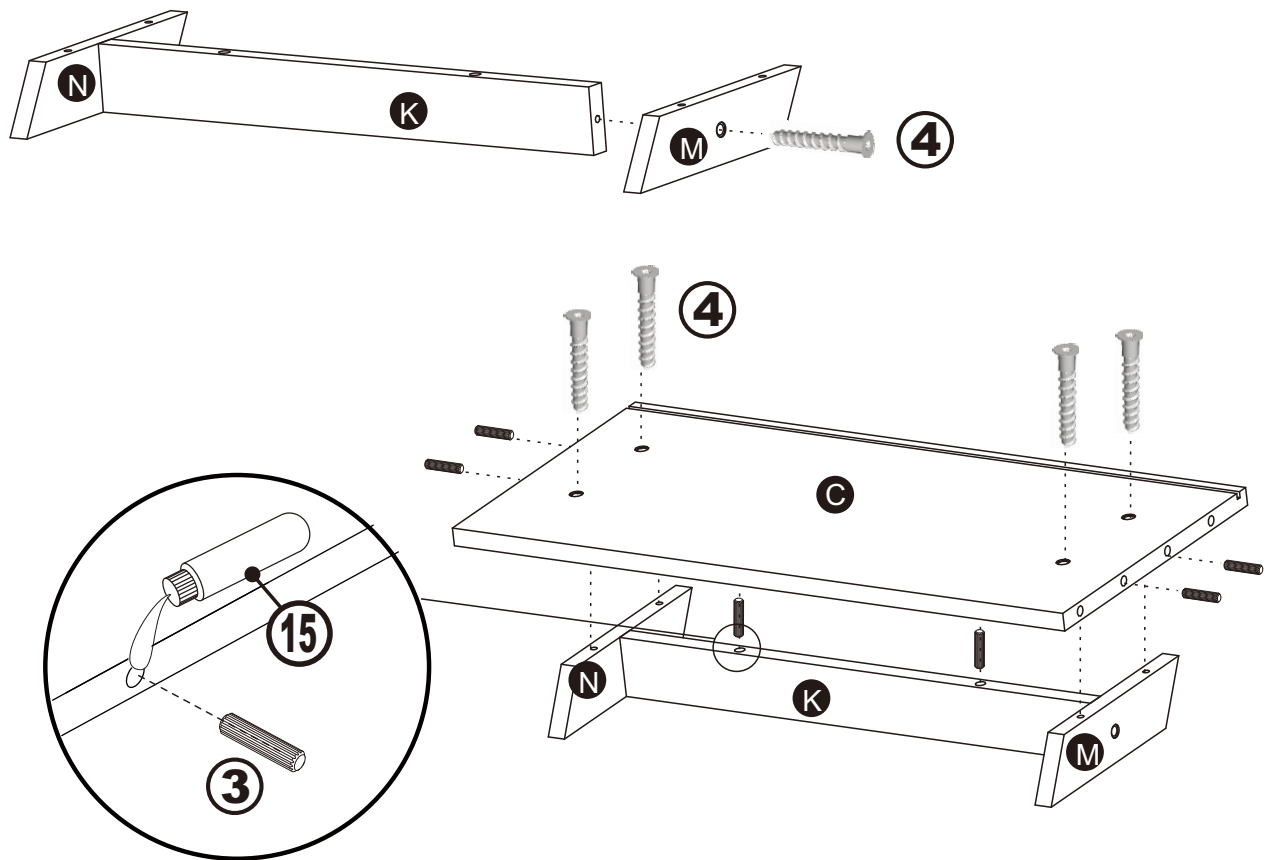
Knock down panel **A** before lock (4pcs) cam-nut up

### STEP : 4

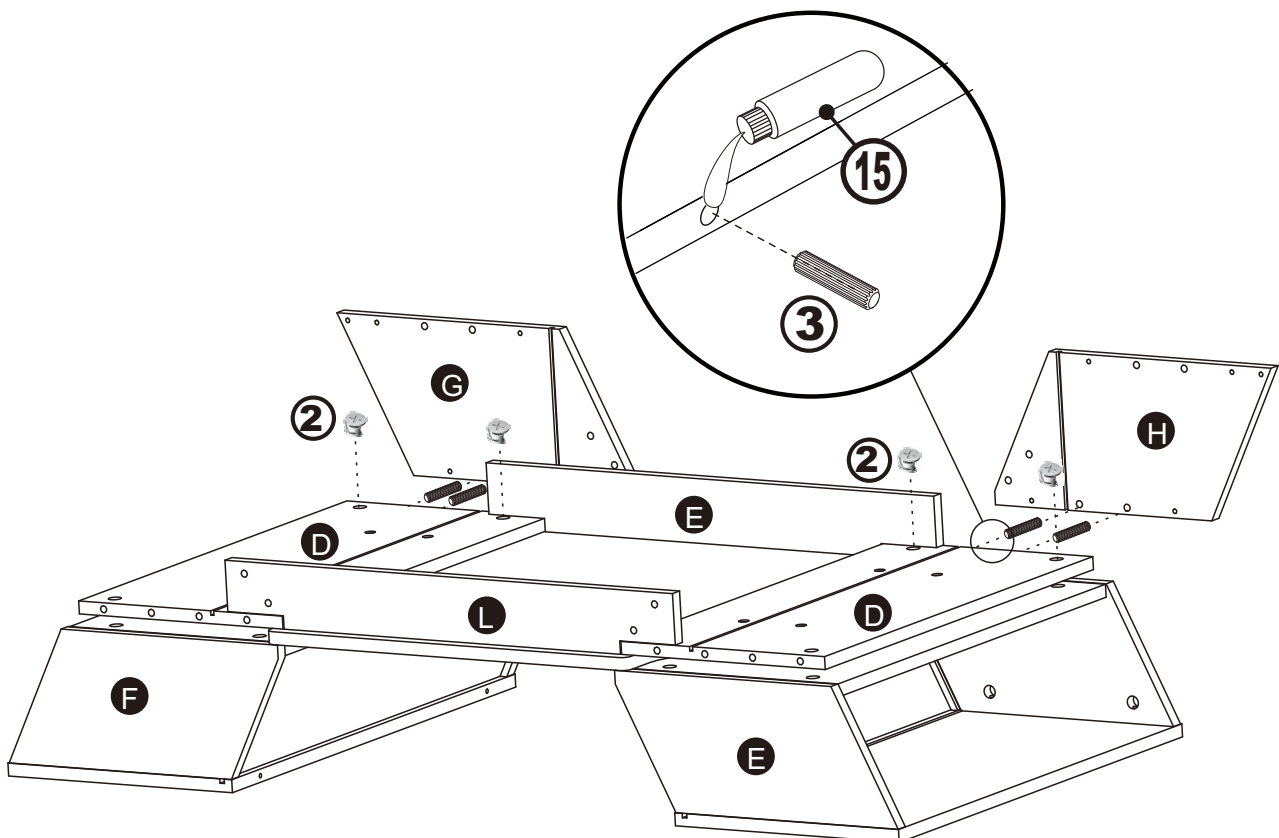
To prepare and insert short wood dowels to panels **L**



## STEP : 5 (preparation)

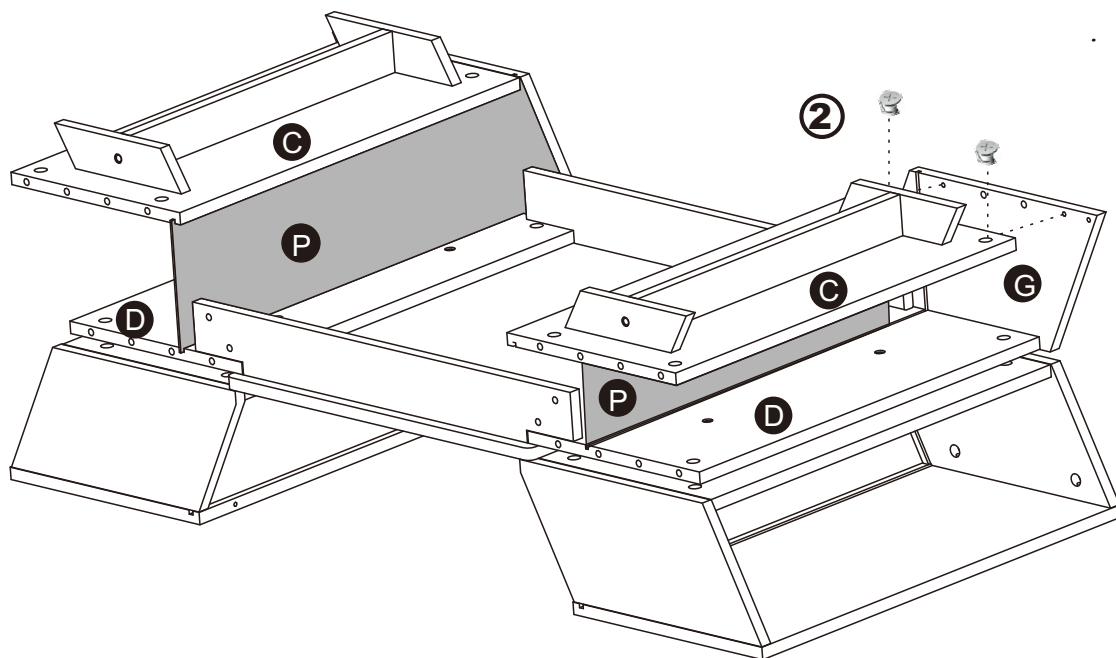


## STEP : 6 To prepare and insert wood dowels to panels first

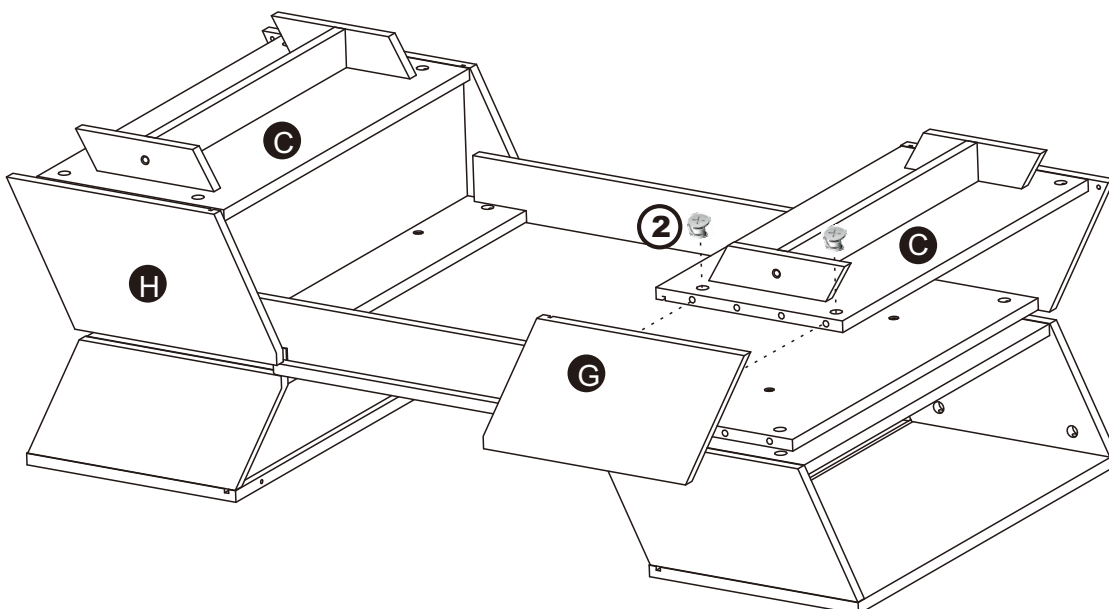


## STEP : 7

Insert back panel **P** before knock panels and lock cam-nut up

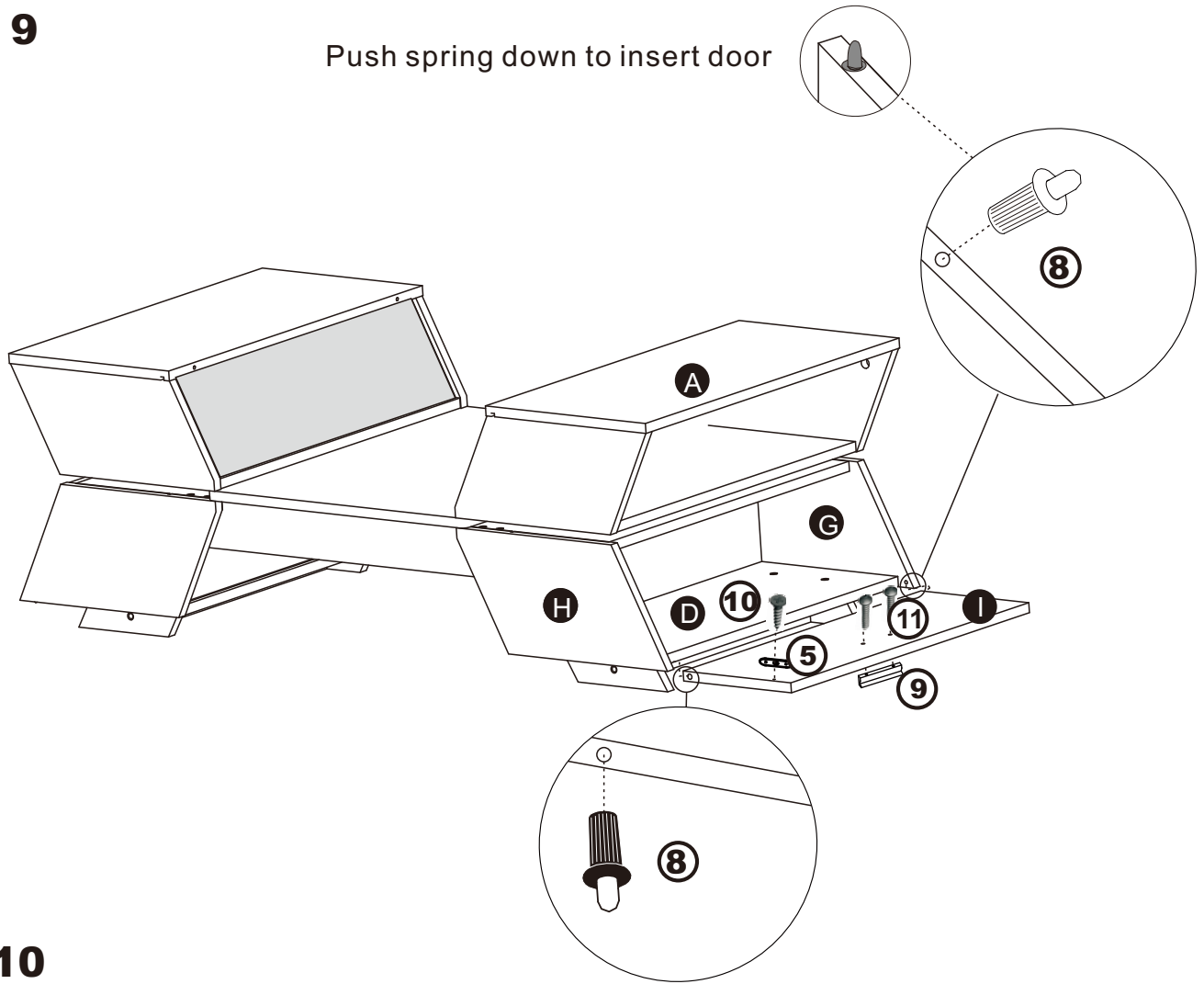


## STEP : 8



## STEP : 9

Push spring down to insert door



## STEP : 10

