

Kitchen Bath Collection is not liable for any inaccuracies in this booklet resulting from printing or transcription errors. Kitchen Bath Collection reserves the right to modify the product as it considers necessary, without compromising the essential safety and operating characteristics of the item.

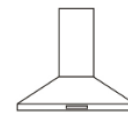
INSTRUCTION BOOKLET



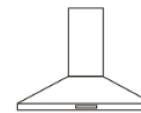
HA75



HA90



STL-75LED



STL-90LED



KitchenBathCollection

RANGE HOOD



A WARNINGS

The warnings in this manual have been provided for your safety and the safety of others. Be sure to read the entirety of this booklet carefully prior to installing and operating this appliance.

- Please keep this instruction manual for your future reference. If the appliance is sold or consigned to another party, ensure that this booklet is passed to the new owner.
- Prior to installation, confirm that the appliance has sufficient suction power for your stove and specific application. Failure to comply may compromise the safety of the item and cause injury and/or damage. Kitchen Bath Collection is not liable for any injuries or damage caused by misuse of the item.
- This appliance is not intended for use by young children.
- This appliance must be installed by qualified personnel, in compliance with all building codes.
- Prior to performing any cleaning or maintenance operations, be sure to first disconnect the appliance from the power supply.
- If the power cord is damaged, it must be replaced by the manufacturer or a qualified electrician in order to avoid any hazards. Any modifications to the electrical system that may be required for the installation or repair of the range hood must only be made by qualified electricians.
- It is dangerous to modify or attempt to modify the components of this appliance. In the event of any malfunctions, do not attempt to resolve the issue on your own. Contact Kitchen Bath Collection customer service for assistance.
- Repairs performed by unqualified persons may cause damage. For all repair and other work on the appliance, please contact a qualified professional.
- Always check that all the electrical parts (lights, motor) are off when the appliance is not being used.
- This range hood must only be used to exhaust cooking fumes in a residential application. Kitchen Bath Collection disclaims all liability for any other use of this appliance.
- The maximum weight of any object placed on or above the hood must not exceed 3 lbs.
- After installing the stainless steel hood, clean the appliance to remove any residue. Be sure to use a cleaning method compliant with the instructions in this booklet. Kitchen Bath Collection accepts no liability in case of damage caused by the use of cleaning methods not recommended in this booklet.

- Ensure that the room is adequately ventilated when the range hood is in use at the same time as appliances burning gas or other fuels.
- The exhaust air must not be discharged into a duct that is used to exhaust fumes from appliances burning gas or other fuels.
- Ensure that all regulations concerning the discharge of exhaust air have been met and fulfilled before you use the appliance.
- During installation, handle the stainless steel chimney pieces with care, as the edges are sharp and can cause injury.
- On applicable models, ensure that the tempered glass canopy is completely free of damages prior to installation. Also, ensure that the screws used to install the glass are not secured too tightly. The screws should be snug, but no tighter than that. Failure to comply may cause the glass to shatter.
- Prior to performing any cleaning or maintenance operations, disconnect the appliance by unplugging the power cord. Kitchen Bath Collection disclaims all liability for any damage that may be directly or indirectly caused to people, items, and animals resulting from a failure to follow the instructions provided in this booklet and all the warnings above relating to the installation, operation, and maintenance of the appliance.

H WARRANTY

This appliance is covered by a one-year manufacturer's defect warranty. Please fill in the information below for your future reference.

Name: _____

Order Number: _____

Date of Purchase: _____

Website ordered from: _____

Please contact Kitchen Bath Collection with any warranty questions:

Kitchen Bath Collection
www.kitchenbathcollection.com
info@kitchenbathcollection.com
310-808-9600

Warning: Installation in a manner other than the method advised in this manual voids the warranty.

2. CHARCOAL FILTERS

Charcoal filters are required for ventless/ductless installation only. If you are installing the range hood with a duct to the outside, you may discard the charcoal filters.

The charcoal filters trap the odors and impurities present in the stream of air that passes through them. The air is purified by passing through the filters and then recirculates into the kitchen through the vented slits at the top of the chimney. The charcoal filters cannot be cleaned, and should be replaced at minimum once every 4 months, or more often as needed.

Additional charcoal filters can be purchased from generic brands at your local home improvement store or online retailer. Or, you may contact KitchenBathCollection.com to order additional filters.

F PACKING LIST

Model No.	Parts	Quantity
	Instruction Booklet	1
	Range hood main body	1
HA75-LED	Chimney cover	1
HA90-LED	Chimney extension	1
STL75-LED	Bracket	1
STL90-LED	Support bar	1
	Aluminum duct	1
	Screws, washers, etc.	1 bag

G SAFETY WARNINGS

- For safety, the appliance must be disconnected during installation. Before installation, confirm that the voltage corresponds to the values on the rating plate located inside the range hood.
- The recommended distance between the cooktop and the range hood is 26 to 28 inches. For safety, the range hood must be mounted no closer to the cooktop than 26 inches.
- Never flambé or cook with open flames under the range hood.
- This appliance is not for use with deep fryers.

B MOUNTING INSTRUCTIONS

Prior to installing the appliance, plug the power cord into a working electrical outlet and test the various functions of the unit. Ensure that the fan is functional on all speeds and that the lights operate normally before proceeding with installation.

To mount the range hood, follow the below steps.

Step 1:

- Rest the support bar against the wall at a height from the cooktop determined by X+(26 to 28 inches). See Figure 1 for details.
- Make sure the support bar is level; then mark the four holes to be drilled.
- Drill the holes and insert four 8 mm diameter screws (2). Then fasten the bar using the corresponding screws (3). See diagram for details.

Step 2:

- Place the bracket (B) in the appropriate position (see Figure 2). The bracket should be flush with the ceiling. Make sure the bracket is level, and mark the two holes to be drilled.
- Drill the holes (4), insert two 8mm diameter screw anchors (5) and fasten the bracket (B) using the corresponding screws (6).

Step 3:

- For applicable models only: Place the tempered glass canopy on the hood and fasten it using the four provided screws. Safety warning: Ensure that the glass is completely free of damage prior to installation. Also, ensure that the screws used to install the glass are not secured too tightly. The screws should be snug, but no tighter than that. Failure to comply may cause the glass to shatter.
- Insert the duct into the duct opening, and secure the duct using two of the appropriate screws (7).

Step 4:

- Prior to installation, remove the white protective film from the surface of both chimney cover pieces.
- Slide the chimney extension to the desired height (8).
- Slide the chimney cover and the extension onto the main body (there is a small lip) until it is fully inserted.
- Tighten the chimney cover to the main body using four M4x8 screws (9).

Step 5:

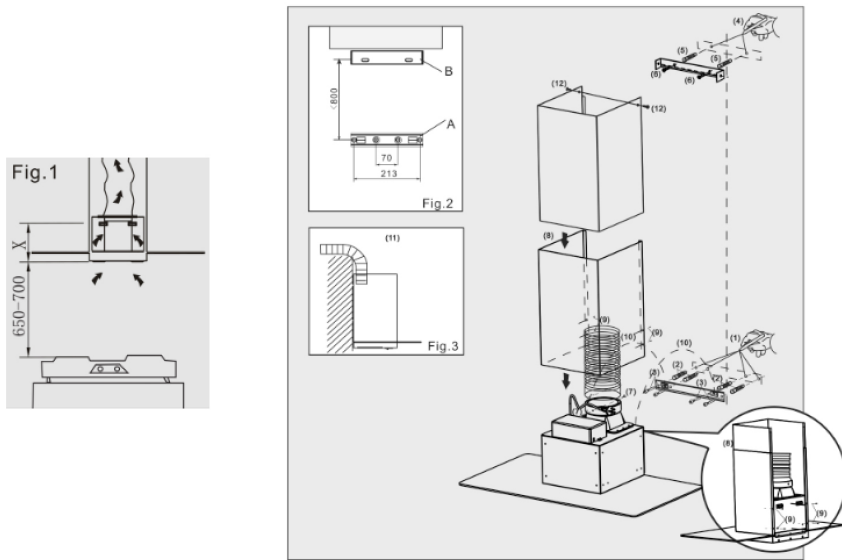
- Hook the range hood to the support bar. Ensure that the range hood is fully supported and stable (10).

Step 6:

- Direct the duct out of the kitchen as shown in Figure 3 (11).
- If you are installing the appliance for ventless/ductless operation, skip this step.

Step 7:

- Tighten the chimney extension to the bracket (B) using the provided screws (12).



C TECHNICAL SPECIFICATIONS

Model No.	HA75-LED HA90-LED STL75-LED STL90-LED	Dimensions	29.6 inches wide x 19.7 inches deep. Max height of 41 inches. 35.5 inches wide x 19.7 inches deep. Max height of 41 inches.
Illumination	2W x 2	Motor input power	190W
Power	110 – 120V / 60 Hz	Duct Output	150 mm
Noise	58 dB(A) 52 dB(A) 48 dB(A)	Suction Capacity	700 m ³ /h 460 m ³ /h 300 m ³ /h

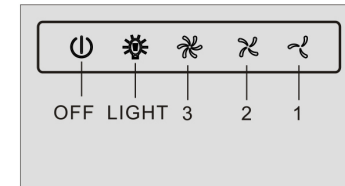
D OPERATION

Light button:

- Touch once to turn the lights on.
- Touch once to turn the lights off.

Fan buttons 1, 2, and 3:

- Button 1: Touch once to turn the fan on at low speed.
- Button 2: Touch once to turn the fan on at medium speed.
- Button 3: Touch once to turn the fan on at high speed.



Off button:

- Touch once to activate delay shut-off. The indicator light will flash in delay mode. The fan will continue to run for 2 to 3 minutes before automatically shutting off.
- Touch the off button again to shut off the fan immediately.

E MAINTENANCE AND CLEANING

Proper maintenance and care of your range hood will ensure smooth operation and help maintain efficiency of the appliance over time. Special attention should be paid to the aluminum and charcoal filters. Frequent cleaning and/or replacement of the filters will prevent the buildup of cooking residue and grease on the filters, thereby reducing the risk of fire.

1. ALUMINUM FILTERS

The aluminum filters trap the fat and grease particles present in cooking exhaust. As a part of proper maintenance, they should be washed once every month at minimum, and more often as needed. To wash, use hot water and detergent, and take care not to bend the filters. They are also dishwasher safe. Only replace the filters on the hood when completely dry.

WARNING: Do not use the stove or operate the range hood without the aluminum filters in place. Doing so will line the interior of the appliance with cooking residue and grease, resulting in a fire hazard.