

Please Do Not Return Your Item to the Retailer

Thank you for your purchase of an Epic Furnishings item
You should enjoy many years of trouble free, dependable use

**If for any reason you are missing parts,
have damaged parts, or need help with
assembly or trouble shooting, please email:**

service@epicfurnishings.com

Please have your order # as well as
access to the item

Assembly Instructions

DO NOT RETURN PRODUCT TO YOUR RETAILER
Contact Technical Support

24/7 email: service@epicfurnishings.com (reply within one business day)

(you must provide a valid order #)

Video Assembly Instructions ... www.youtube.com/epicfurnishings

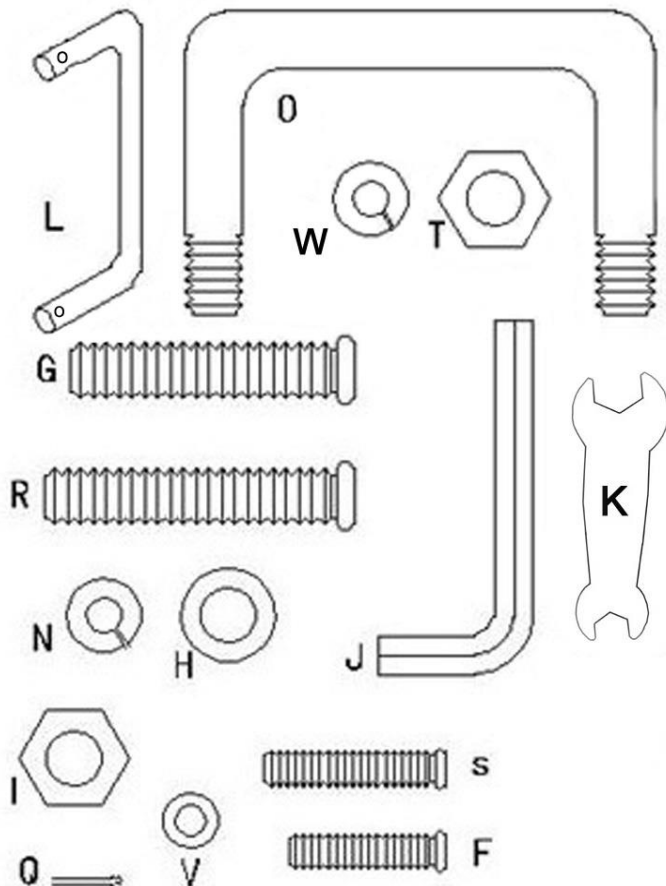
Full-size or Queen-size Grid Mainframe

Getting Started

THANK YOU for selecting an Epic Furnishings futon. We've taken great care in the design and hand crafting of each piece so that assembling your futon is enjoyable and rewarding. By carefully following the simple assembly instructions, you will have created a piece of furniture that will provide years of enjoyment.

BEFORE YOU BEGIN ASSEMBLY be sure you have both boxes for the frame. This box and the box containing the two arms. Select a suitable area for assembly of the unit, preferably an open space on soft carpet. If assembling on a hard floor, we recommend laying down a blanket so that you will not scratch or mark either furniture or floor. We take great care to make sure each piece comes with everything you'll need. If you find a part missing, or have questions, just call us toll-free in the U.S.A. at 888.608.6086 during business hours.

Part #	Description	Qty	Part #	Description	Qty
A	Left Hinge	1	Z	Rail Support Bracket	4
B	Right Hinge	1			
C	Seat Section	1			
D	Back Section	1			
E	Stretcher Rail	4			
F	Medium Bolt	1"			4
G	Longer Bolt	1 3/4"			8
H	Large Silver Washer	16			
I	Large Nut	8			
J	Allen Wrench	1			
K	Open Wrench	1			
L	Hook	1			
M	Rubber Pad	4			
N	Large Lock Washer	8			
O	Mattress Retainer	2			
P	T Leg	2			
Q	Cotter Pin	2			
R	Longest Bolt	3 1/2"			8
S	Shortest Bolt	3/4"			10
T	Small Nut	4			
V	Small Flat Washer	8			
W	Small Lock Washer	8			

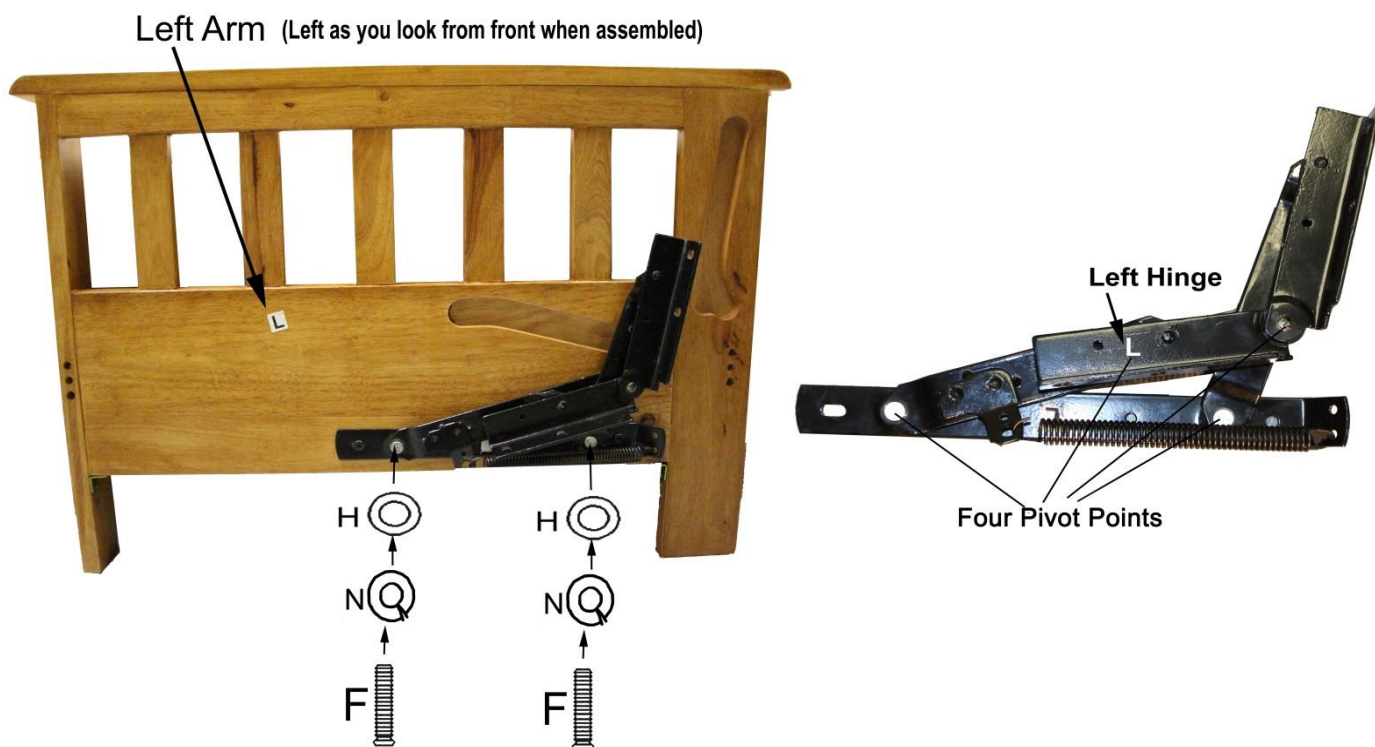


*As long as you have these quantities, don't worry about extras.

Full-size or Queen-size Grid Mainframe

Page 2 of 7

Step 1 Attaching Hinges to Wooden Arms



1. Remove the 2 hinges inside your hardware kit. You will find an "L" and "R" sticker on the hinges. Match the "L" Hinge to the "L" Arm and the "R" Hinge to the "R" Arm
2. Starting with Left Arm and "L" Hinge, make sure hinge is position as shown in the diagram; keep in mind that your particular arm will look different, this diagram is a generic arm presentation
3. Using the Medium Bolt (F), then a Large Lock Washer (N), then a Large Silver Washer (H), then the hinge, then the Arm. Tighten the bolt loosely. Repeat for second bolt to attach hinge
4. Tighten both bolts using the Allen Wrench (J)
5. Repeat steps 2 through 4 for Right Arm
6. Note: if the hinges are tight when opening and closing, use a little oil on the four pivot points

Assembly Instructions

DO NOT RETURN PRODUCT TO YOUR RETAILER
Contact Technical Support

24/7 email: service@epicfurnishings.com (reply within one business day)

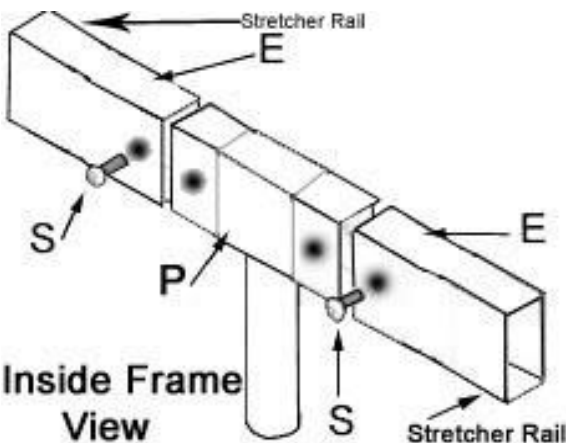
(you must provide a valid order #)

Video Assembly Instructions ... www.youtube.com/epicfurnishings

Full-size or Queen-size Grid Mainframe

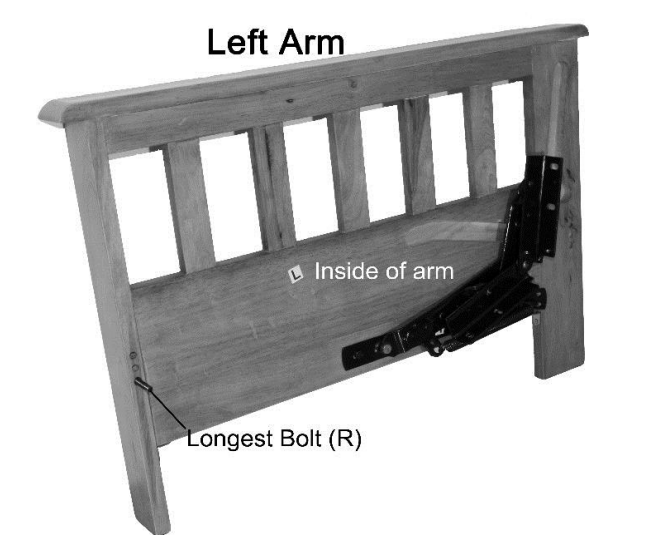
Page 3 of 7

Step 2 Assemble Front and Back Stretcher Rails



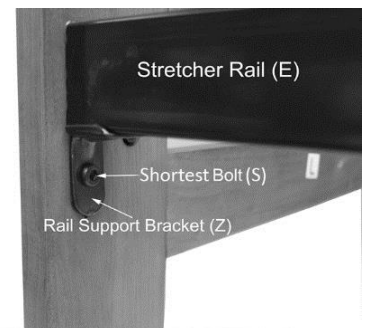
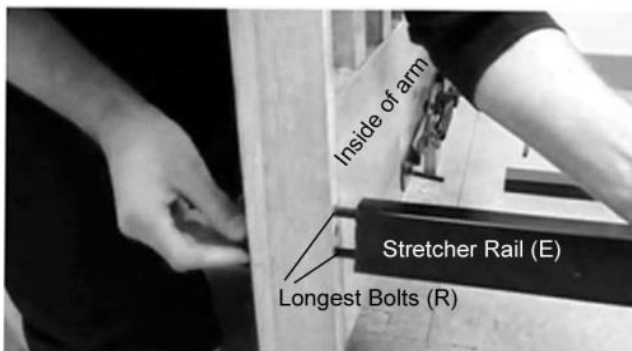
1. Remove and discard the protective plastic insert at one end of each Stretcher Rail Section (E), also noted by a sticker (total of four)
2. Insert each end of the T-Leg (P) into the hollow end of two Stretcher Rail Sections. The Stretcher Rail Section should be **outside** of the T-leg
3. Align the two face holes with the holes in the T-Leg as shown in the diagram
4. Insert the Shortest Bolt (S) in each hole and tighten loosely
5. Using Allen Wrench (J), snug both Shortest Bolts (S). Do over
6. Repeat steps 1 through 5 for the other Stretcher Rail (E)

Step 3 Attach Arms to Stretcher Rails



Note: The bolt heads associated with the T-Leg (P) attachment in Step 2 should be facing the inside of the frame; otherwise it does not matter which Stretcher Rail is used for the Front or Back

1. Using 4 of the Longest Bolts (R) attach the assembled Stretcher Rails (E) to the front and back of the Left Arm as shown in diagram. Tighten **VERY LOOSELY** the 4 Longest Bolts (R)
2. Repeat Step 1 for other arm. **Note:** Tighten slightly the bolts on opposite corners to ensure that Stretcher Arms (E) are lined up with the screw holes. Then tighten all 8 Longest Bolts (R) evenly using Allen Wrench (J)
3. Attach 4 Rail Support Brackets (Z) using Shortest Bolt (S), then Small Lock Washer (W), then Small Flat Washers (V) under Stretcher Rail (E).



Assembly Instructions

DO NOT RETURN PRODUCT TO YOUR RETAILER
Contact Technical Support

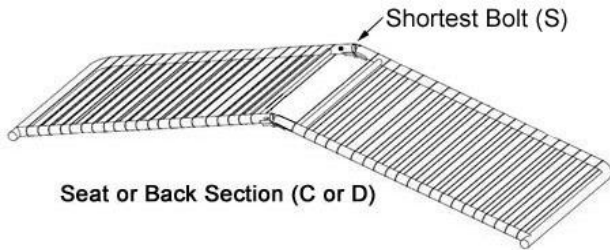
24/7 email: service@epicfurnishings.com (reply within one business day)

(you must provide a valid order #)

Video Assembly Instructions ... www.youtube.com/epicfurnishings

Full-size or Queen-size Grid Mainframe

Step 4 Assemble Seat and Back Sections



1. Assemble Seat & Back Sections (C,D), unfold each.
2. Insert one Shortest Bolt (S) into the center front edge of both the Seat & Back Sections (C,D) as shown in the diagram

Step 5 Attach Seat and Back Sections to Hinges



Note: Wire Rods Up.

Note: To identify Seat Section (C) from Back Section (D), Seat Section (C) has 4 holes along the front edge.

(to be used for the Mattress Retainers (O) described in Step 7)

1. Attach Seat Section (C) **WIRE RODS UP**, to the front part of the Hinge using a Longer Bolt (G), then Seat Section (C), then Hinge, then a Large Silver Washer (H), then a Large Lock Washer (N) and then screw the Large Nut (I) from the bottom of the Hinge. **TIGHTEN LOOSELY**. Repeat for the second hole.
2. Repeat step 1 for the Right side of the Seat Section (C). During shipment hinges may get compressed. If Seat Section does not easily reach the Right Hinge (B), simply pull hinge and Seat Section (C) together to decompress hinge.
3. Repeat steps 1 and 2 for the Back Section (D) except attaching to the back portion of the Hinge.
4. **DO NOT TIGHTEN** the 8 Longer Bolts (G) yet.



- G - Longer Bolt**
- H - Large Silver Washer**
- N - Large Lock Washer**
- I - Large Nut**

Full-size or Queen-size Grid Mainframe

Page 5 of 7

Step 6 Insert Seat and Back Sections Connecting Hook

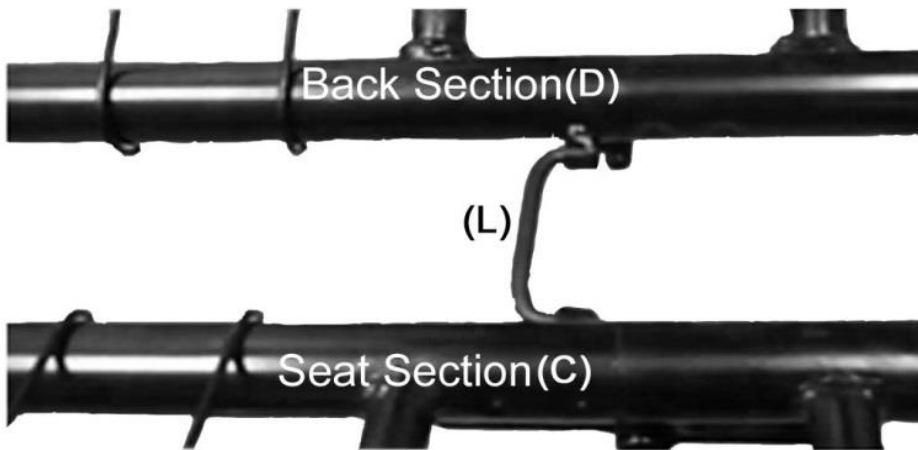
Seat Section(D)



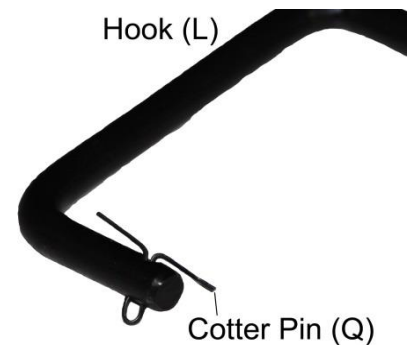
1. With not tightened Longer Bolts (G), lift Back Section (D) so that Hook (L) can reach loops on Seat & Back Sections (C,D). Insert Hook (L) into metal loops of the Seat & Back Sections (C,D).

2. Insert Cotter Pins (Q) through both holes at the ends of Hook(L) then split and flare ends to secure, as shown in diagram.

3. Now tighten all 8 Longer Bolt (G) with Allen Wrench (J), stabilizing Large Nut (I) with Open Wrench (K).



Flare ends
to secure
Cotter Pin (Q)



Assembly Instructions

**DO NOT RETURN PRODUCT TO YOUR RETAILER
Contact Technical Support**

24/7 email: service@epicfurnishings.com (reply within one business day)

(you must provide a valid order #)

Video Assembly Instructions ... www.youtube.com/epicfurnishings

Full-size or Queen-size Grid Mainframe

Page 6 of 7

Step 7 Attach Mattress Retainers



- Small Silver Washer (V) then
- Small Lock Washer (W) then
- Small Nut (T)

Right Arm



Note: If you are using the Perfect® Sit & Sleep Cover, DO NOT ATTACH THE MATTRESS RETAINERS (O); skip this step 7

1. Insert the Left & Right Mattress Retainers (O) from the top of the front edge of the Seat Section (C) as described in the diagram.

Note: Mattress Retainers (O) stick up above the Seat Section (C).

2. Using the Small Silver Washer (V), then the Small Lock Washer (W), then Small Nut (T), tighten with Open Wrench (K).

3. Repeat for 3 remaining bolts.

Step 8 Attach Rubber Pads



Right Seat Rubber Pad

Note: The purpose of the Rubber Pads (M) is to prevent metal on metal wear and tear and minimize noise.

1. Convert the frame to the Bed Position (see page 6 for instructions on how to convert your frame to the Bed Position).

2. Attach the four Rubber Pads (M) **to the top of the Stretcher Rail (E)** at the four points where the Seat and Back Sectionis (C & D) touch the Stretcher Rails (E).

Diagram shows placement for the Right side Seat Section. Repeat for the other three points including the Left side Seat Section, Left side Back Section, and Right side Back Section.



Assembly Instructions

**DO NOT RETURN PRODUCT TO YOUR RETAILER
Contact Technical Support**

24/7 email: service@epicfurnishings.com (reply within one business day)

(you must provide a valid order #)

Video Assembly Instructions ... www.youtube.com/epicfurnishings

Full-size or Queen-size Grid Mainframe

Page 7 of 7

Opening and Closing Your Futon



Sofa Position



Bed Position

Start by standing directly in front of your futon frame

To position your futon frame in the bed position:

1. Place both hands on the seat of the frame.
2. Pull upward until the hinge tightens. In the same motion, gently pull back and push down until frame is fully flat.

To bring you futon back up to the sofa position:

1. Lift up on seat frame until hinge releases and begins to fold.
2. Push forward and then down until back to the sofa position.

Note: You can also lift from either side of the back, if you prefer, to bring it back up to the sofa position

Care and Maintenance

The care required for your new futon frame is no different from any other piece of fine furniture in your home. A soft damp cloth will easily clean your furniture. Avoid excessive moisture (especially from condensation forming on cold drinks) and open flame or hot candle wax. As with all fine furniture, exposure to direct sunlight, over time, will lighten the finish.