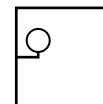


IDEAL LUX®

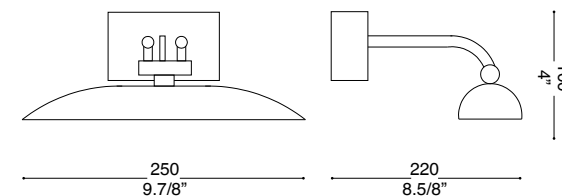


Mirror 20 AP2

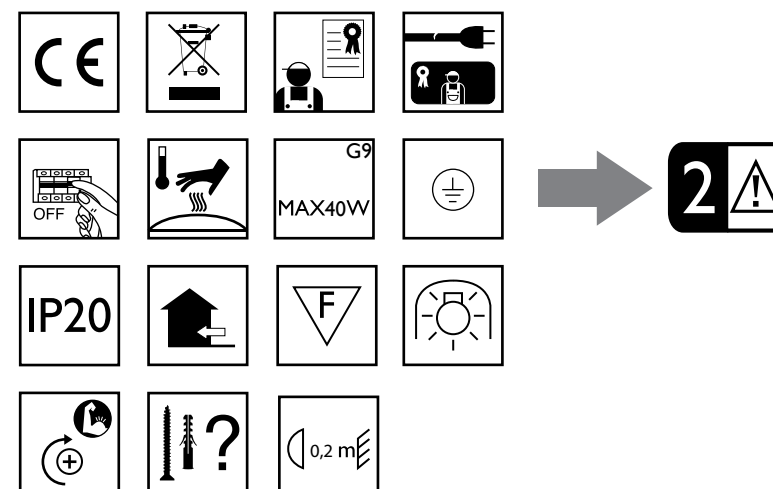
Lampada da parete
Wall lamp
Applique
Wandleuchte
Lámpara de pared
Настенные светильники



max 2 x 40W G9 / 240V
- 8021696017327 BRUNITO
- 8021696017334 CROMO
- 8021696031507 NICKEL



IDEAL LUX®

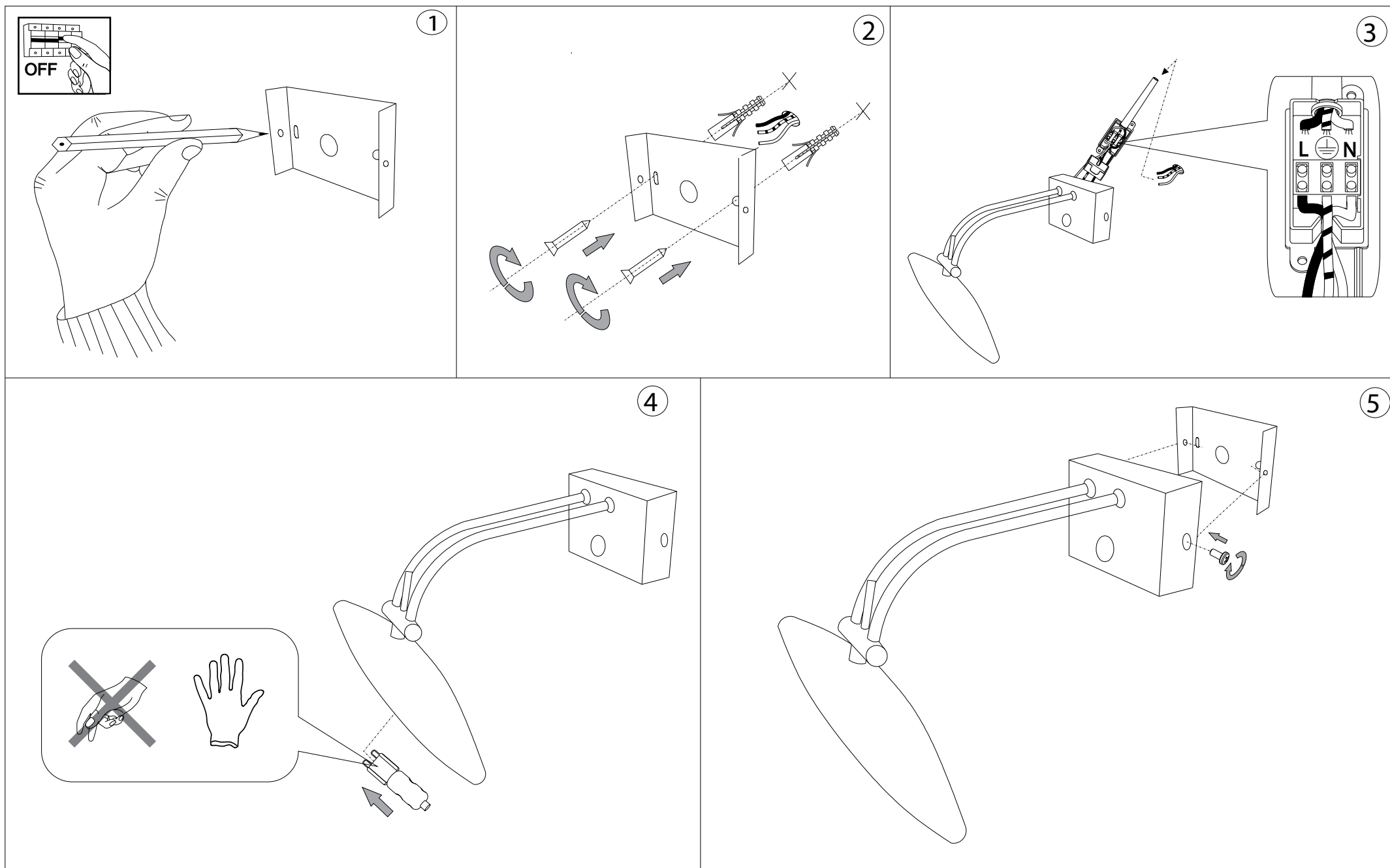


IDEAL LUX s.r.l. Via Taglio Destro 32 30035 Mirano (VE) Italy p.i. / c.f. 02420040277	IDEAL LUX Web www.ideal-lux.com info@ideal-lux.com	IDEAL LUX Office Tel. +39 041 5790500 Fax +39 041 5700085	IDEAL LUX Showroom Tel. +39 041 5790501 Aperto dal Lunedì al Sabato
--	--	---	---

Per reclami o suggerimenti scrivete a: • For complaints or suggestions, please write to:

customer.service@ideal-lux.com

ESEGUIRE LE OPERAZIONI DI MONTAGGIO, SEGUENDO L'ORDINE NUMERICO PROGRESSIVO.
FOLLOW THE ASSEMBLY INSTRUCTIONS BY READING THE NUMERICAL PROGRESSION



La sicurezza di questo apparecchio è garantita solo con l'uso appropriato di queste istruzioni pertanto è necessario conservarle.
The safety and reliability are guaranteed only when installation instructions are properly followed. Please retain this instruction sheet for future reference.