



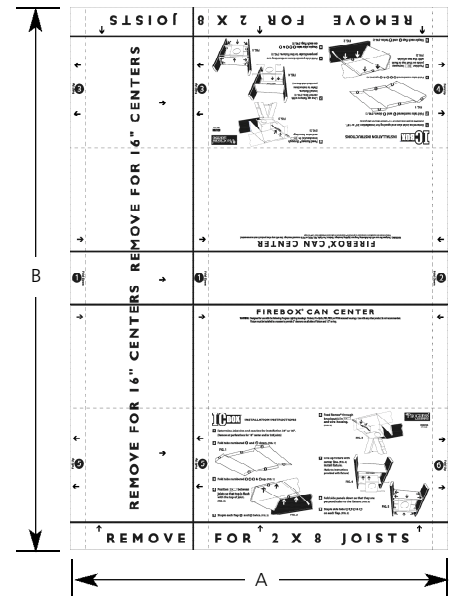
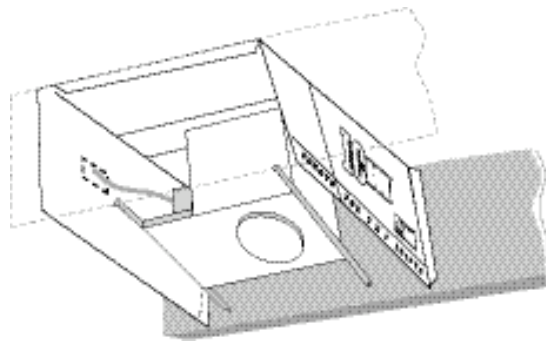
Accessory

Recessed Enclosure for Non-IC Housings in IC Applications

Recessed

Type _____
-01
P8555

Catalog No.	Dimensions (Inches)	
	A	B
P8555 -01	24-1/2	35



Specifications:

General

- Material is Coroplast™, which is made from polypropylene co-polymer resin
- Deflection temperature F (@66psi) = 194 (90C)
- Melting point = 162C, 324F
- Normal temperature performance range = -17F to 160F
- MSDS available upon request

Application

- Use to create a barrier to keep insulation from making contact with the following type Non-IC rated recessed housings:

- P821-FB
- P821-FBFC
- P85-FB
- P831-FB
- P85-TG
- P830-TG
- P86-TG
- P816-TG

All Pro-Optic® housings from Progress Lighting

- P63 P8213
- P66 P8218
- P68 P8226
- P69

Progress Lighting
Post Office Box 5704
Spartanburg, South Carolina
29304-5704

www.progresslighting.com