

Incandescent

Polycarbonate Globe Wall Lantern

Outdoor

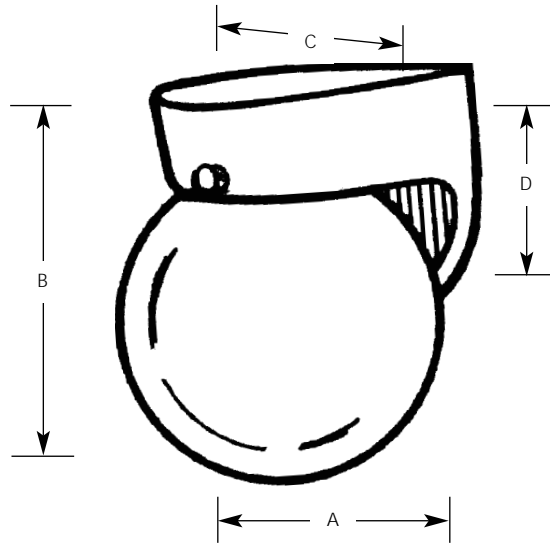
Energy Star

Type _____

-30EB -31EB

P5816

Catalog No.	Finish		Lamping	Dimensions (Inches)			
	White	Black		A	B	C	D
P5816	-30EB	-31EB	1-18w triple tube CF	6	7-3/4	6-1/2	2-1/2



Specifications:

General

- White (-30) or black (-31) finish
- 6" acrylic globe
- Polycarbonate construction
- Energy star certified

Mounting

- Wall mounted outdoor
- Covers standard 4" recessed hexagonal outlet box
- Mounting strap for outlet box included

Electrical

- GX24q-2 base socket
- 120v NPF electronic ballast
- Unit will start down to 0 degrees F
- Integral photocell included to turn off unit during the daytime
- Pre-wired

Labeling

- UL-CUL wet location listed



Progress Lighting
 701 Millennium Blvd.
 Greenville, South Carolina
 29607

www.progresslighting.com

Rev. 8/07