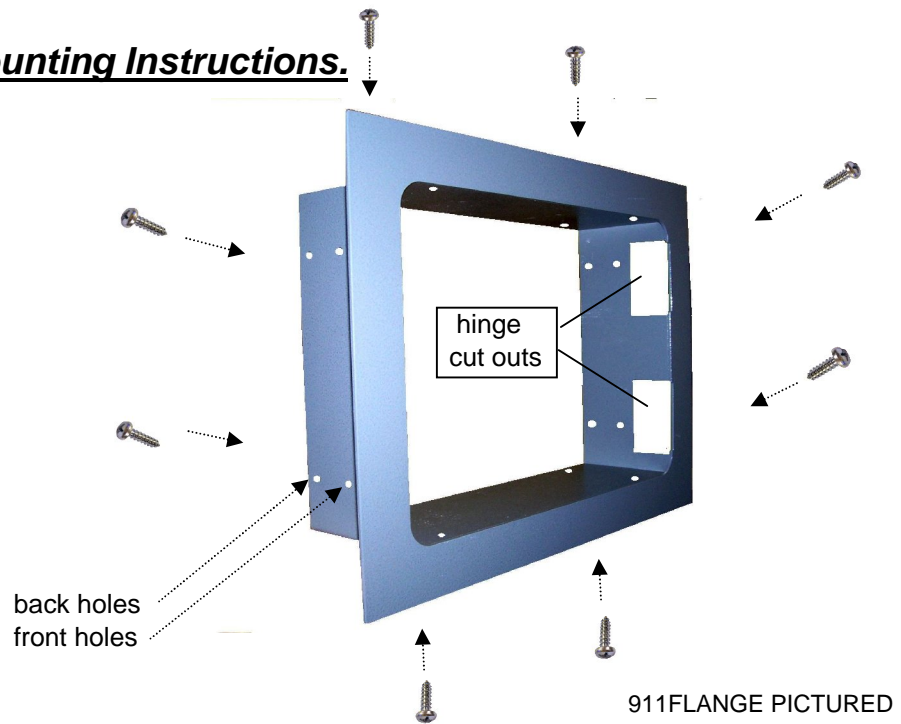


## Microwave Flange Mounting Instructions.

### Please Note:

- \* Flange does not mount to the wall, **ONLY** to body of safe.
- \* Flange is for cosmetic use only. Safe must be anchored independent of flange.



### Flush Mount

- Safe front is flush with flange.
- Use back holes for top & bottom.
- Use either back holes or front holes for sides.

### Recessed Mount

- Safe is recessed approx. 1 1/2" inside flange.
- Must use back holes on all 4 sides



WMS911-G-C



WMS129-G-C

- 1.) Decide how you want your flange mounted to the safe, flush or recessed.  
(Note: Recessed mount, you cannot open door full swing)  
(Note: Flush mount, the dial & hinges will stick out)
- 2.) Mount flange to **BODY** of safe in desired position with the (8) screws provided.
- 3.) Hole in wall should face a closet or stairwell (safe is deeper than standard wall depths)
- 4.) Wall hole must have brace to support safe and to bolt center of safe down.