



Conversion Rails (M5789- Sold Separately) Assembly Instructions

*For all 4 in 1 cribs, please contact a retailer to order your full size adult wooden bed rails for your full size bed conversion.

Congratulations on purchasing a Million Dollar Baby Product. This product will provide many years of service if you adhere to the following guidelines for assembly, maintenance, and operation. This product is for residential use only. Any institutional use is strictly prohibited.

Please be sure to follow the instructions for proper assembly. Use a Phillips head screwdriver for assembling the product in addition to the Allen wrench included in the hardware box. Do not use power screwdrivers. All of our products are made from natural woods. Please understand that natural woods have color variations which are the result of nature and not defects in workmanship.

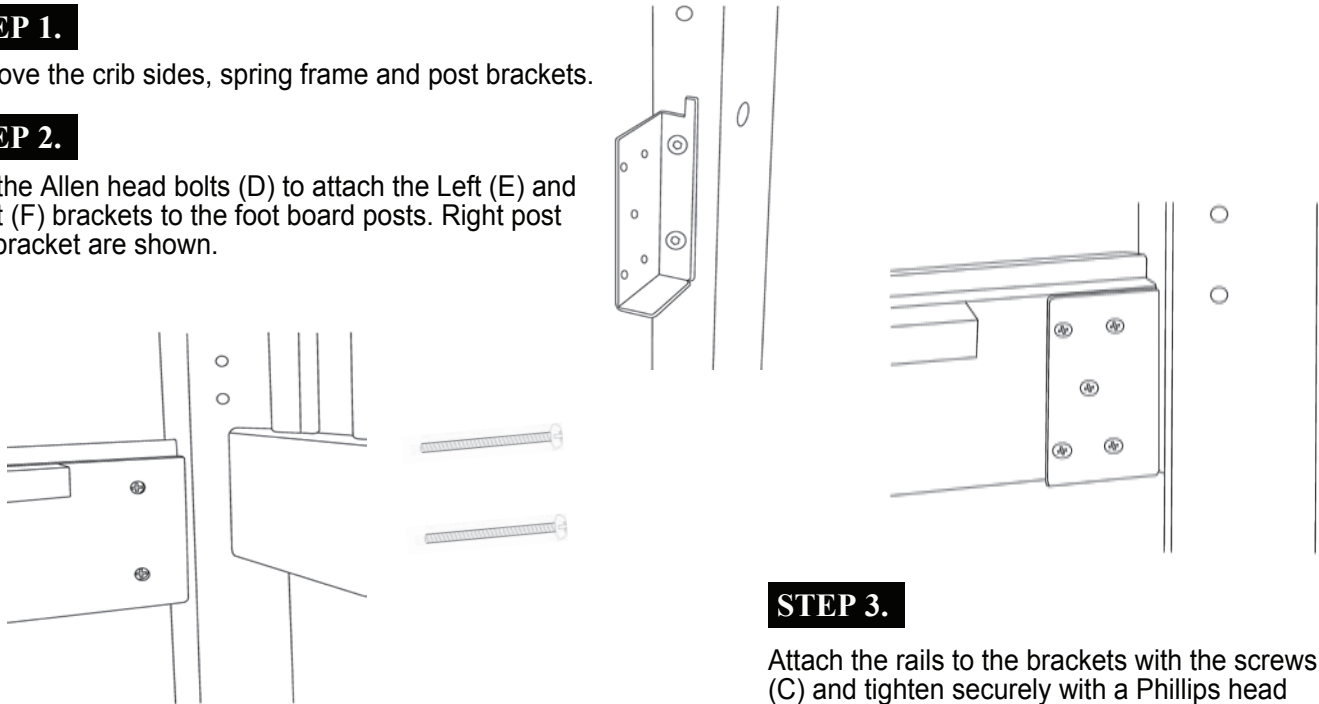
DO NOT SUBSTITUTE PARTS. ALL MODELS HAVE THE SAME QUANTITY OF PARTS AND HARDWARE. YOUR MODEL MAY LOOK DIFFERENT FROM THE ONE ILLUSTRATED DUE TO STYLISTIC VARIATIONS.

STEP 1.

Remove the crib sides, spring frame and post brackets.

STEP 2.

Use the Allen head bolts (D) to attach the Left (E) and Right (F) brackets to the foot board posts. Right post and bracket are shown.



STEP 3.

Attach the rails to the brackets with the screws (C) and tighten securely with a Phillips head Screwdriver.

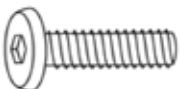
STEP 4.

Attach the rails to the headboard with the barrel nuts and bolts you removed in step 1.

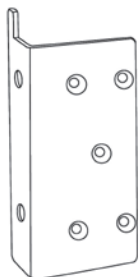
HARDWARE



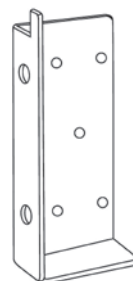
C. 3/4" Flat head screw (10)



D. 3/4" Allen head bolt (4)



E. Left bracket



F. Right bracket

Tools Needed
(not included)



Phillips
screwdriver