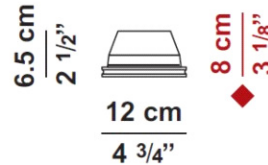
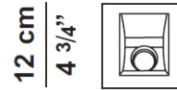
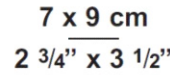
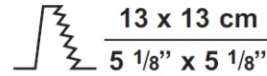
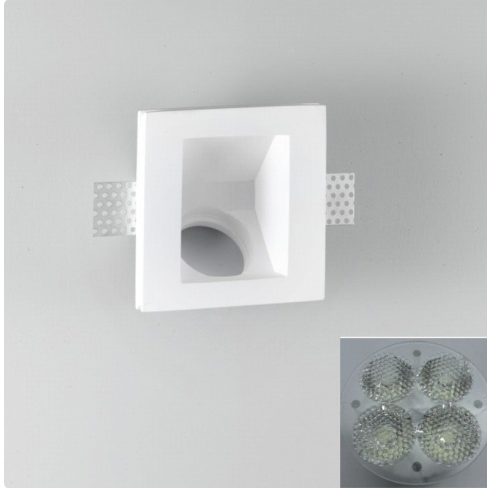


Date: _____


Project: _____

Fixture Type: _____

Specifier/Rep: _____



◆ WITH LED (D8-6100)

Certified by  for North American Standard

APPLICATION:

Wall - Recessed

CONSTRUCTION:

Fixture Material:

Plaster

Fixture Finish:

(See next page for available options)

Available Finish/Size/Lamping Options

Options Available (See next pages)

Component Requirement:

Component(s) Required, see Components Page

ELECTRICAL:

Lamp Category: LED

Power Supply:

Not Included

Voltage/Constant Current:

350mA

(277v or 347v available upon request)

Emergency:

N/A

IP RATING:

N/A

OPTICS:

Diffusor Material:

N/A

Diffusor Finish:

(See next page for available options)

Reflector: N/A

Efficiency:

N/A

PRODUCT FEATURES:

Plaster Housing Frame with 4.8W LED - Driver sold separately (see system components)



Invisibili - 4" Step Lights 4.8W

Date: _____

Project: _____

Fixture Type: _____

Specifier/Rep: _____

Available Sizing/Lamp Options:

Model No	Fixture - Diffuser	Details
D8-6220	White - N/A	L: 12cm / 4 3/4" W: 12cm / 4 3/4" H: 6.5cm/ 2 1/2", One LED, Max. 4.8W, (3000°)K, 40°
D8-6221	White - N/A	L: 12cm / 4 3/4" W: 12cm / 4 3/4" H: 6.5cm/ 2 1/2", One LED, Max. 4.8W, (4000°)K, 40°


Date: _____

Project: _____

Fixture Type: _____

Specifier/Rep: _____

COMPONENTS:

Model Number	Description	Image	Application/Line-art
DR009350	LED - Driver, Driver 1-9w 350mA		
DR017350	Invisibili - LED Driver, Driver 17w 350mA		

Date: _____

Project: _____

Fixture Type: _____

Specifier/Rep: _____

Installation Guide

