



## OfficeWorks™ Mobile Training Tables

Strong. Durable. Versatile.



# OfficeWorks™ Mobile Training Tables



48" Trapezoid Mobile Training Table, Gray



Top: 18"x60" Mobile Training Table, Gray  
Bottom: 18"x72" Mobile Training Table, Mahogany

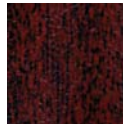


Functional, durable mobile training tables can easily be reconfigured to improve meeting productivity. Durable, wear resistant 3/4" melamine top. Strong 1-1/2" offset dual legs allows for maximum legroom and no inference with the perforated modesty panel.

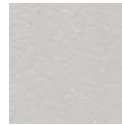
## Features

- Durable and long lasting, 18" deep, 3/4" t-molded wear resistant melamine top
- 1-1/2" Diameter, powder coated, heavy gauge offset dual leg design maximizes leg room
- Perforated modesty panel adds stability and function
- 3" Diameter casters, 2 locking, 2 non-locking, for improved navigation over transoms
- Top and legs sold together in one carton

## Finishes



Mahogany



Gray



48" Gray Trapezoid and 18"x72" Mobile Training Tables in possible configuration

Specifications				
Item #	Size	Finish	Leg Color	Ship Wt. (lbs)
68057	18"x60"	Gray	Charcoal	39
68058	18"x60"	Mahogany	Black	39
68067	18"x72"	Gray	Charcoal	45
68068	18"x72"	Mahogany	Black	45
68077	48" Trapezoid	Gray	Charcoal	39
68078	48" Trapezoid	Mahogany	Black	39