



Middle Atlantic Products, Inc.

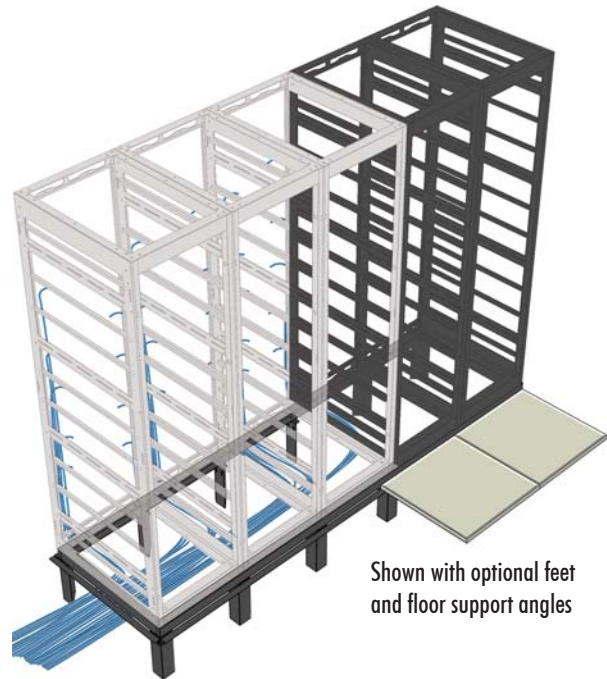
middleatlantic.com

## RIB Series Riser Bases

RIB Series Riser bases provide advanced cable management

### Features

- 1/8" thick fully welded construction
- Riser bases allow for field rough-in prior to arrival of racks and enclosures
- Riser bases act as a lower cable chase for passing cables between racks in multi-bay installations
- Ideal for use in raised floor installations when used with optional VFEET and ANGLE / WANGLE / DANGLE
- Available in custom widths, depths, heights and configurations
- Durable black textured powdercoat finish



Shown with optional feet and floor support angles

### Architects' and Engineers' Specifications

Riser base shall be Middle Atlantic Products model # RIB-\_\_-\_\_-\_\_ (see chart for available models) to accommodate \_\_ qty (refer to chart) \_\_ (WRK / DRK / MRK / VRK / VMRK) Series \_\_" depth racks. Riser base shall be constructed of 11-gauge steel. Riser base shall be 2-1/2" H x \_\_" W x \_\_" D (refer to chart). Riser base shall have one knockout on each side for cable pass-through measuring 1.71" H x \_\_" W (refer to chart for width dimension). Riser bases shall be phosphate pre-treated and finished a durable textured black powdercoat. Riser base shall be warrantied to be free from defects in material or workmanship under normal use and conditions for the lifetime of the product.

\* Seismic Riser base option available (see SRB Spec Sheet 96-01027)

#### OPTIONS

Raised floor riser feet shall be Middle Atlantic Products model # VFEET-\_\_-12 for \_\_ (refer to chart on page 3) bay installations for use with \_\_ (refer to chart on page 3) bay RIB series riser base. Raised floor riser feet shall be 11.5" tall, constructed of 11-gauge steel, and designed for 12" raised floors. Raised floor riser feet shall be phosphate pre-treated and finished in a durable black powdercoat.

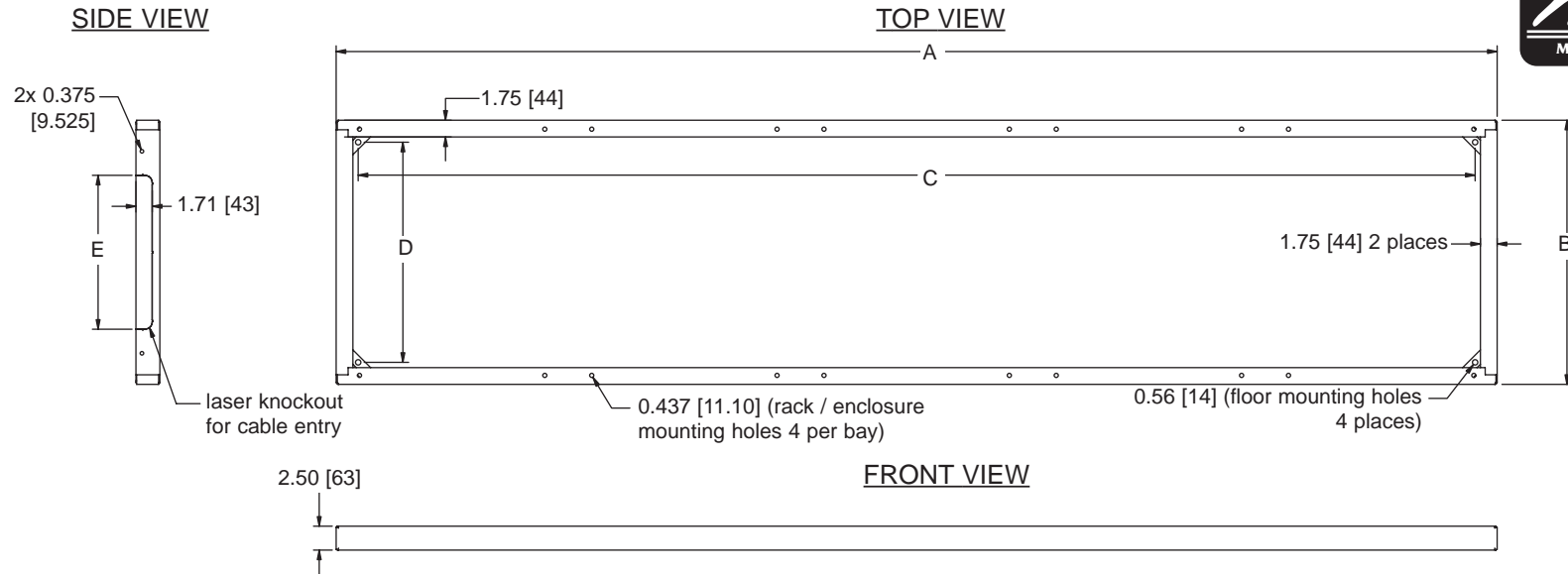
Support angles shall be Middle Atlantic Products model # ANGLE-\_\_-\_\_ (for use when mounting MRK / VRK / VMRK Series racks) (refer to chart on page 4) / WANGLE-\_\_ (for use when mounting WRK Series racks) (refer to chart) for use with \_\_ (refer to chart on page 4) / DANGLE-\_\_ (for use when mounting DRK Series Racks) (refer to chart). Support angles shall be constructed from 11-gauge steel. Support angles shall be phosphate pre-treated and finished in a durable black powdercoat.

electronic version available at [middleatlantic.com](http://middleatlantic.com)

### Engineered Mounting Solutions

US: New Jersey • California • Illinois • Voice: 973-839-1011 Fax: 973-839-1976 • [middleatlantic.com](http://middleatlantic.com)  
Canada: Ontario • British Columbia • Voice: 613-836-2501 Fax: 613-836-2690 • [middleatlantic.ca](http://middleatlantic.ca)

# RIB Series Riser Bases basic dimensions (5 Bay shown)



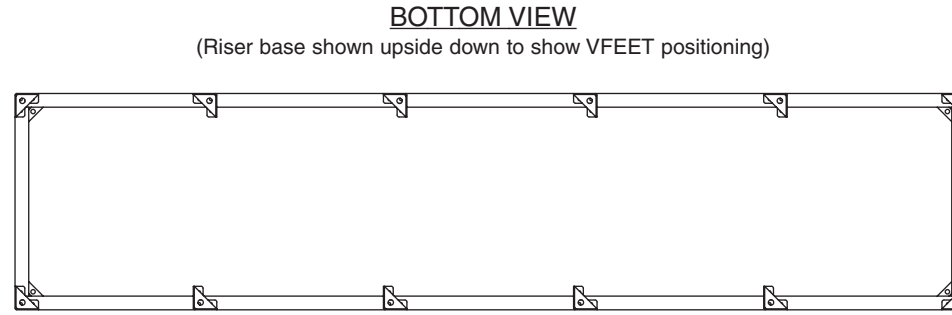
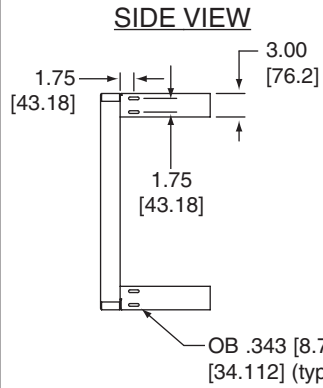
**RIB Riser Base**

Part #	A OVERALL WIDTH	B OVERALL DEPTH	C FLOOR MOUNTING HOLES	D FLOOR MOUNTING HOLES	E KNOCKOUT WIDTH	# OF RACKS ACCOMMODATED	Part #	A OVERALL WIDTH	B OVERALL DEPTH	C FLOOR MOUNTING HOLES	D FLOOR MOUNTING HOLES	E KNOCKOUT WIDTH	# OF RACKS ACCOMMODATED
RIB-1-WRK-27	24.25 [616]	27.63 [702]	19.65 [499]	23.00 [584]	16.10 [409]	1	RIB-1-MRK-26	22.00 [559]	26.40 [671]	17.40 [442]	21.80 [554]	14.87 [378]	1
RIB-2-WRK-27	48.53 [1233]	27.63 [702]	43.93 [1116]	23.00 [584]	16.10 [409]	2	RIB-2-MRK-26	44.03 [1118]	26.40 [671]	39.43 [1002]	21.80 [554]	14.87 [378]	2
RIB-3-WRK-27	72.81 [1849]	27.63 [702]	68.21 [1733]	23.00 [584]	16.10 [409]	3	RIB-3-MRK-26	66.06 [1678]	26.40 [671]	61.46 [1561]	21.80 [554]	14.87 [378]	3
RIB-4-WRK-27	97.09 [2466]	27.63 [702]	92.49 [2349]	23.00 [584]	16.10 [409]	4	RIB-4-MRK-26	88.09 [2237]	26.40 [671]	83.49 [2121]	21.80 [554]	14.87 [378]	4
RIB-5-WRK-27	121.37 [3083]	27.63 [702]	116.77 [2966]	23.00 [584]	16.10 [409]	5	RIB-5-MRK-26	110.12 [2797]	26.40 [671]	105.52 [2680]	21.80 [554]	14.87 [378]	5
RIB-1-WRK-32	24.25 [616]	32.63 [829]	19.65 [499]	28.00 [711]	21.10 [536]	1	RIB-1-MRK-31	22.00 [559]	31.40 [798]	17.40 [442]	26.80 [681]	19.87 [505]	1
RIB-2-WRK-32	48.53 [1233]	32.63 [829]	43.93 [1116]	28.00 [711]	21.10 [536]	2	RIB-2-MRK-31	44.03 [1118]	31.40 [798]	39.43 [1002]	26.80 [681]	19.87 [505]	2
RIB-3-WRK-32	72.81 [1849]	32.63 [829]	68.21 [1733]	28.00 [711]	21.10 [536]	3	RIB-3-MRK-31	66.06 [1678]	31.40 [798]	61.46 [1561]	26.80 [681]	19.87 [505]	3
RIB-4-WRK-32	97.09 [2466]	32.63 [829]	92.49 [2349]	28.00 [711]	21.10 [536]	4	RIB-4-MRK-31	88.09 [2237]	31.40 [798]	83.49 [2121]	26.80 [681]	19.87 [505]	4
RIB-5-WRK-32	121.37 [3083]	32.63 [829]	116.77 [2966]	28.00 [711]	21.10 [536]	5	RIB-5-MRK-31	110.12 [2797]	31.40 [798]	105.52 [2680]	26.80 [681]	19.87 [505]	5
RIB-1-DRK-31	30.00 [762]	31.40 [798]	25.40 [645]	26.80 [681]	19.87 [508]	1	RIB-1-MRK-36	22.00 [559]	36.00 [914]	17.40 [442]	31.40 [798]	24.47 [622]	1
RIB-2-DRK-31	60.03 [1525]	31.40 [798]	55.43 [1408]	26.80 [681]	19.87 [508]	2	RIB-2-MRK-36	44.03 [1118]	36.00 [914]	39.43 [1002]	31.40 [798]	24.47 [622]	2
RIB-3-DRK-31	90.06 [2288]	31.40 [798]	85.46 [2171]	26.80 [681]	19.87 [508]	3	RIB-3-MRK-36	66.06 [1678]	36.00 [914]	61.46 [1561]	31.40 [798]	24.47 [622]	3
RIB-1-DRK-36	30.00 [762]	36.00 [914]	25.40 [645]	31.40 [798]	24.47 [622]	1	RIB-4-MRK-36	88.09 [2237]	36.00 [914]	83.49 [2121]	31.40 [798]	24.47 [622]	4
RIB-2-DRK-36	60.03 [1525]	36.00 [914]	55.43 [1408]	31.40 [798]	24.47 [622]	2	RIB-5-MRK-36	110.12 [2797]	36.00 [914]	105.52 [2680]	31.40 [798]	24.47 [622]	5
RIB-3-DRK-36	90.06 [2288]	36.00 [914]	85.46 [2171]	31.40 [798]	24.47 [622]	3	RIB-1-MRK-42	22.00 [559]	42.00 [1067]	17.40 [442]	37.40 [950]	30.47 [774]	1
RIB-1-DRK-42	30.00 [762]	42.00 [1067]	25.40 [645]	37.40 [950]	30.47 [774]	1	RIB-2-MRK-42	44.03 [1118]	42.00 [1067]	39.43 [1002]	37.40 [950]	30.47 [774]	2
RIB-2-DRK-42	60.03 [1525]	42.00 [1067]	55.43 [1408]	37.40 [950]	30.47 [774]	2	RIB-3-MRK-42	66.06 [1678]	42.00 [1067]	61.46 [1561]	37.40 [950]	30.47 [774]	3
RIB-3-DRK-42	90.06 [2288]	42.00 [1067]	85.46 [2171]	37.40 [950]	30.47 [774]	3							

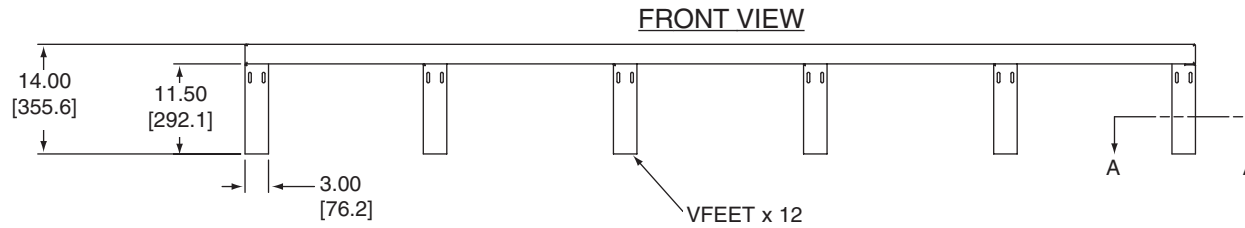
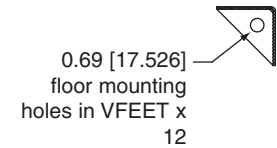
All dimensions in inches unless otherwise noted [All bracketed dimensions are in millimeters]

# VFEET Raised Floor Riser Feet basic dimensions

All dimensions in inches unless otherwise noted [All bracketed dimensions are in millimeters]



**SECTION A-A**



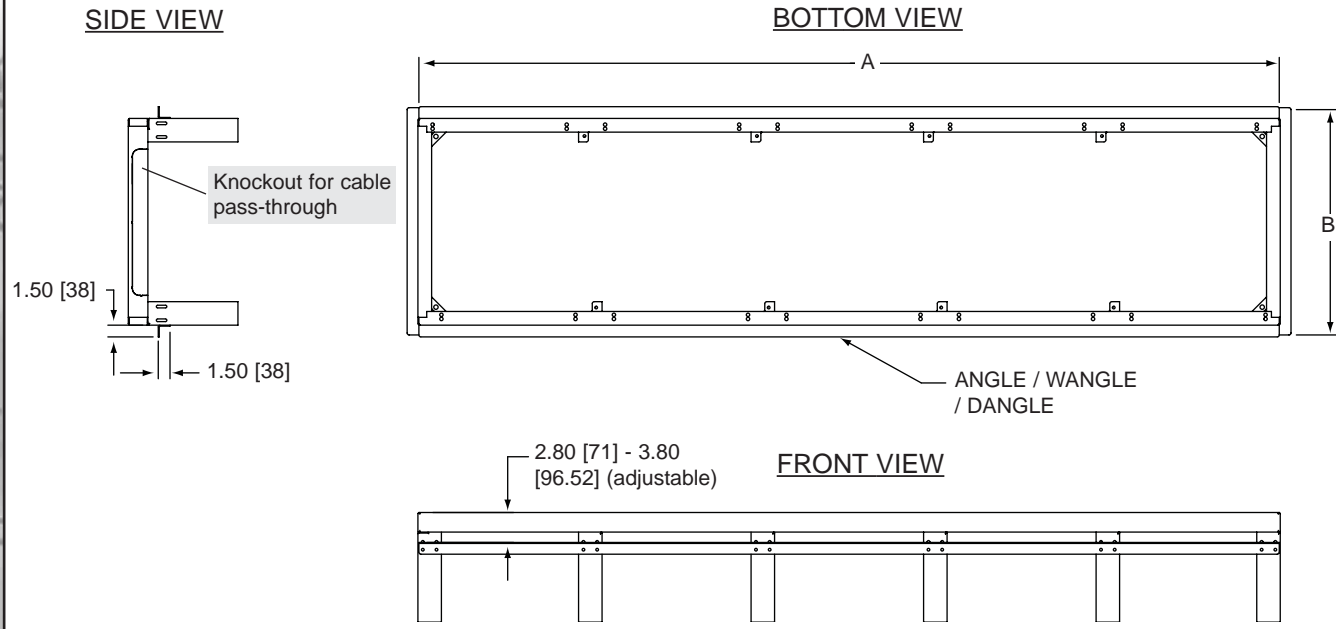
**VFEET Raised Floor Riser Feet**

Part #	# OF FEET	USED ON	# OF RACKS ACCOMMODATED
VFEET-1-12	4	RIB-1	1
VFEET-2-12	6	RIB-2	2
VFEET-3-12	8	RIB-3	3
VFEET-4-12	10	RIB-4	4
VFEET-5-12	12	RIB-5	5



# Raised Floor Support Angles basic dimensions

All dimensions in inches unless otherwise noted [All bracketed dimensions are in millimeters]



## ANGLE / WANGLE / DANGLE Raised Floor Support Angles

Part #	A OVERALL WIDTH	B OVERALL DEPTH	USED ON	RACK SERIES	# OF RACKS ACCOMMODATED
ANGLE-1	21.75 [552]	29.15 [740]	VFEET-1-12	MRK/VRK/VMRK	1
ANGLE-2	43.78 [1112]	29.15 [740]	VFEET-2-12	MRK/VRK/VMRK	2
ANGLE-3	65.81 [1672]	29.15 [740]	VFEET-3-12	MRK/VRK/VMRK	3
ANGLE-4	87.84 [2231]	29.15 [740]	VFEET-4-12	MRK/VRK/VMRK	4
ANGLE-5	109.87 [2791]	29.15 [740]	VFEET-5-12	MRK/VRK/VMRK	5
ANGLE-1-36	21.75 [552]	38.75 [984]	VFEET-1-12	MRK 36" depth racks	1
ANGLE-2-36	43.78 [1112]	38.75 [984]	VFEET-2-12	MRK 36" depth racks	2
ANGLE-3-36	65.81 [1672]	38.75 [984]	VFEET-3-12	MRK 36" depth racks	3
ANGLE-4-36	87.84 [2231]	38.75 [984]	VFEET-4-12	MRK 36" depth racks	4
ANGLE-5-36	109.87 [2791]	38.75 [984]	VFEET-5-12	MRK 36" depth racks	5
DANGLE-1-31	29.75 [756]	29.15 [740]	VFEET-1-12	DRK	1
DANGLE-2-31	59.78 [1518]	29.15 [740]	VFEET-2-12	DRK	2
DANGLE-3-31	89.91 [2284]	29.15 [740]	VFEET-3-12	DRK	3

Part #	A OVERALL WIDTH	A OVERALL WIDTH	USED ON	RACK SERIES	# OF RACKS ACCOMMODATED
WANGLE-1	24.00 [610]	30.38 [777]	VFEET-1-12	WRK	1
WANGLE-2	48.28 [1226]	30.38 [777]	VFEET-2-12	WRK	2
WANGLE-3	72.56 [1843]	30.38 [777]	VFEET-3-12	WRK	3
WANGLE-4	96.84 [2460]	30.38 [777]	VFEET-4-12	WRK	4
WANGLE-5	121.12 [3076]	30.38 [777]	VFEET-5-12	WRK	5
ANGLE-1-42	21.75 [552]	38.75 [984]	VFEET-1-12	MRK 42" deep racks	1
ANGLE-2-42	43.78 [1112]	38.75 [984]	VFEET-2-12	MRK 42" deep racks	2
ANGLE-3-42	65.81 [1672]	38.75 [984]	VFEET-3-12	MRK 42" deep racks	3
DANGLE-1-3642	29.75 [756]	38.75 [984]	VFEET-1-12	DRK 36" and 42" depth racks	1
DANGLE-2-3642	59.78 [1518]	38.75 [984]	VFEET-2-12	DRK 36" and 42" depth racks	2
DANGLE-3-3642	89.91 [2284]	38.75 [984]	VFEET-3-12	DRK 36" and 42" depth racks	3

