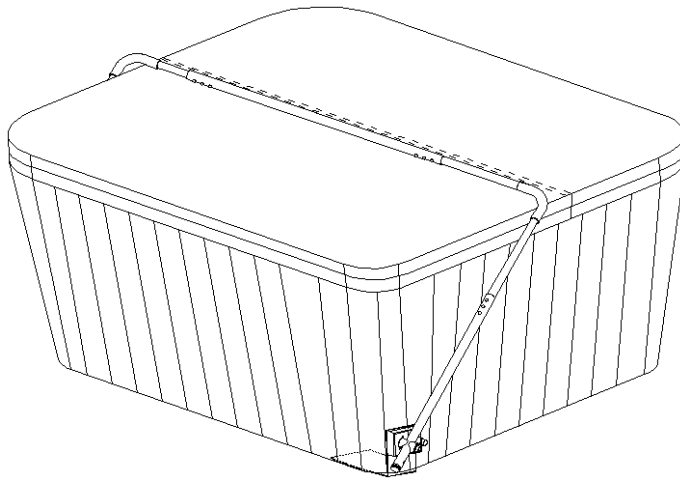


# LOW MOUNT SPA COVERLIFT

## Installation Sheet

**IMPORTANT!!**

**PLEASE READ CAREFULLY BEFORE INSTALLATION**



*(Spa and Spa Cover Not Included)*

### **!! CAUTION !!**

***Please read all instructions and precautions in this installation sheet before using this equipment. Save this installation sheet for future reference. Use this Spa Coverlift only as described in this installation sheet. Inspect and tighten all parts regularly, replace any worn or missing parts immediately.***

### **!! WARNING !!**

***Adult assembly required. This package contains small parts which are a choking hazard. Keep children away from bags and parts until assembled. Dispose of packaging with care.***

**!!! WARNING !!!**

**PLEASE READ**

**!!! WARNING !!!**

**DO NOT** attach or incorporate electrical appliances or accessories into or onto The Spa Coverlift as an electrical hazard could be created, resulting in injury or death.

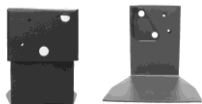
**DO NOT** lean, sit, stand on or play around The Spa Coverlift that could cause a loss of balance resulting in injury.

Use of The Spa Coverlift for any application other than for which it was designed is solely at the purchaser's risk and manufacture, importers, distributors, agents, resellers, dealers and retailers will not be held liable for such use resulting in injury, property damage or damage to the product.

**BEFORE YOU GET STARTED SPA MUST BE COMPLETELY DRAINED**

You will need to make sure you have at least 2 feet of clearance of all 4 sides of your spa. We recommend the coverlift opens toward the back of the spa away from the control panel. Mounting the coverlift in any other orientation may cause interference with the spa's front access panel if any repairs or maintenance of spa is required in the future.

**Assembly Accessories and Parts List**



Foot Pedals(2)



Screw End Caps (24)



1" Self Tapping Screws (18)

**Tools required for assembly:**

1. Phillips Screwdriver
2. Power drill with a 1/16" drill bit
3. Adjustable wrench (2)
4. Pen, Pencil or Marker



Spacer Block (4)



Washers (6)



Coupler Extension (2)



#M12 Locknuts (4)



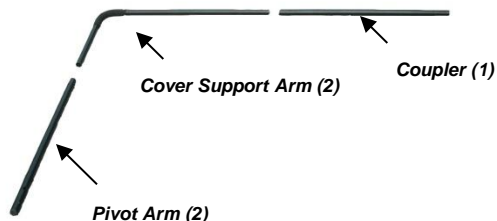
Locknut caps (4)



Pivot Arm Bolts B (2)



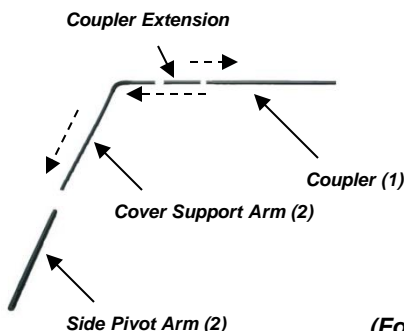
#M12 Nuts (4)



(For Spa Cover up to 72")



Pivot Bolts A (2)  
(with rubber padding)



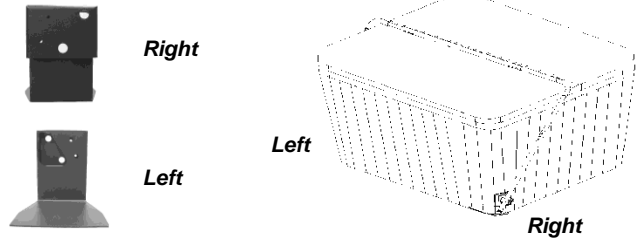
(For Spa Cover between 73"~92")

## SET-UP AND ASSEMBLY:

1. Place all parts in a cleared area and remove the packing materials from the spa shell; do not dispose of the packing materials until assembly is completed and the spa is in operation.
2. Assembly requires two people and the spa needs to be empty so the Foot Pedals can be positioned underneath the spa. Foot Pedals should be placed under the spa just past the radius corner equally on both sides.
3. During assembly, make sure that all parts are oriented as shown in the drawings. Read each assembly step before you begin. **IMPORTANT:** Self tapping screws need to face away from the spa/spa cover - see illustration at the bottom of page 4. Side pivot arms have a dimple indicating where the screws should be placed.
4. Tighten all parts as you assemble them, unless instructed to do otherwise.

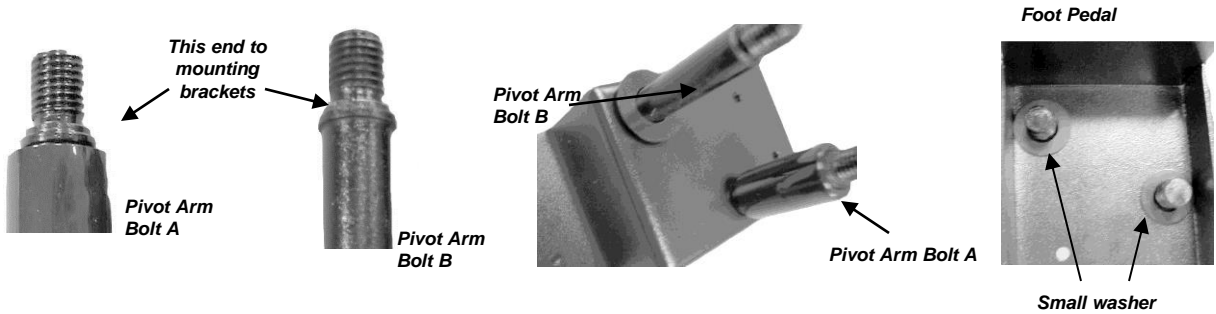
### Step 1:

Identify Right Mounting bracket and Left Mounting Bracket. Repeat Step 2 to 4 for both right and left.



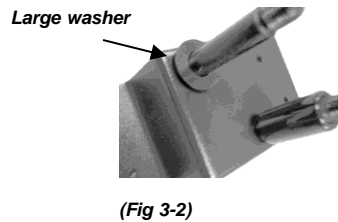
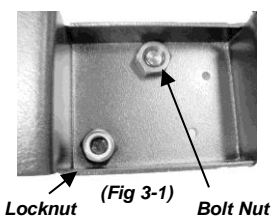
### Step 2:

Insert Pivot Arm Bolt A into center hole of Mounting Bracket and Pivot Arm Bolts B into side corner of Mounting Brackets, then insert small Washer on back side of Mounting Bracket.



### Step 3:

Using #M12 Locknut for Pivot Arm Bolt A and #M12 Bolt Nut for Pivot Arm Bolt B. Secure the bolt tightly on the back side of the FOOT PEDAL (Fig 3-1). Insert Large Washer to Pivot Arm Bolt B (Fig 3-2). Slide left and right Foot Pedals in place to the appropriate sides of the spa.



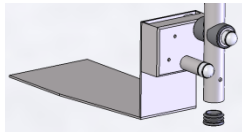
## Step 4:

Secure Bolt Nut to Pivot Arm Bolts A (Fig 4-1) secure tightly and place Nut caps to both nuts. Insert Locknut to Pivot Arm Bolts B (Fig 4-2) and secure tightly and cover nut with Nut Caps (Fig 4-3). Slide the long end of the cover support arm into either side of the Coupler piece and then slide the short end of the Cover Support Arm into the top of the Side Pivot Arms (Fig 4-4). Do the same with the other side. The Cover Support Arm and the Coupler will now be laying on top of the spa cover along the fold. **THIS WILL FIT A SPA COVER UP TO 72”.**

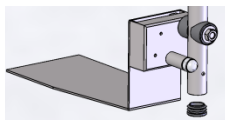
**NOTE:** For spa covers between 73” to 92”, attach Coupler Extension in between Cover Support Arm and Coupler and secure with 3 Self Tapping Screws.



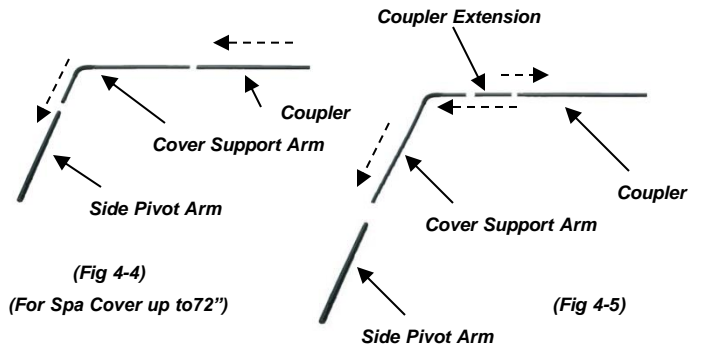
(Fig 4-1)



(Fig 4-3)



(Fig 4-2)



(Fig 4-4)  
(For Spa Cover up to 72”)

(Fig 4-5)

(For Spa Cover between 73”-92”)

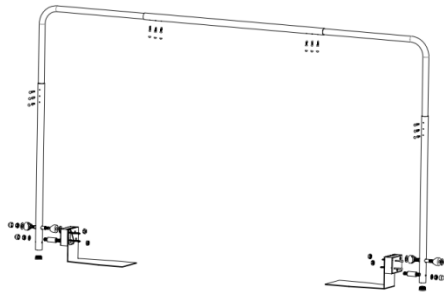
## Step 5:

Adjust the Coupler extension and Support Arms so that the coupler extension is laying approximately 1/2” away from the spa cover's seam (middle). Once you have the lifter fitted to the size of your spa, pre-drill the holes that connect all the arms together-using a 1/16 drill bit . Using the 1” Self Tapping Screws, fasten support arms to the Coupler Pieces. There will be 3 Self Tapping Screws inserted into each end of the Coupler Pieces and 3 Self Tapping Screws inserted into each Cover Support Arm where it connects to the Side Pivot Arm. Place Screw Caps on top of each screws.

## Step 6:

To remove the cover from the spa with the Coverlift, fold the spa cover (at the hinge) over the Cover Support Arm. Then, lift the cover up and toward the back of the spa. The cover will slide back and down the back side of the spa and stop.

**And, you are done and enjoy!!**



## Limited Warranty

We, (“We”, “Our” and “Us” herein refers to manufacture, importer, distributors, dealers, agents, agencies, representatives, partners, retailers, subsidiaries, and affiliates), warrants this product to be free from defects in workmanship and material, under normal use and service conditions, for a period of ninety (90) days from the date of purchase. This warrant extends only to the original purchaser and proof of purchase is required. Product are not purchased from an authorized dealer are specifically excluded from warranty coverage of any kind. We obligate under this warranty is limited to replacing or repairing, at Our option, the product at one of its authorized service centers. All products for which warranty claim is made must be received by Us at one of its authorized service centers with all freight and other transportation charges prepaid, accompanied by sufficient proof of purchase. All returns must be pre-authorized by Us.

Exceptions to the warranty: This warranty does not extend to any product or damage to a product caused by or attributable to freight damage, abuse, misuse, improper or abnormal usage or repairs not provided by Our authorized service center. Products used for commercial or rental purposes, or products used as store display models. No other warranty beyond that specifically set forth above is authorized by Us. We are not responsible or liable for indirect, special or consequential damages arising out of or in connection with the use or performance of the product or damages with respect to any economic loss, loss of property, loss of revenues or profits, loss of enjoyment or use, costs of removal, installation or other consequential damages of whatsoever nature. Some states do not allow the exclusion or limitation of incidental or consequential damages. Accordingly, the above limitation may not apply to you.

The warranty extended hereunder is in lieu of any and all other warranties and any implied warranties of merchantability or fitness for a particular purpose is limited in its scope and duration to the terms set forth herein. Some states do not allow limitations on how long an implied warranty lasts. Accordingly, the above limitation may not apply to you.

This warranty gives you specific legal rights. You may also have other rights which vary from state to state.