

C301AUTO

40.88" x 29.88" x 23.5" (H x W x D)

30 inch wide All-In-One Combination Kitchens with two burners, auto defrost refrigerator-freezer, sink, cabinet

Highlights:

Two easy-to-clean cast iron burners

Includes our automatic defrost FF41 refrigerator-freezer

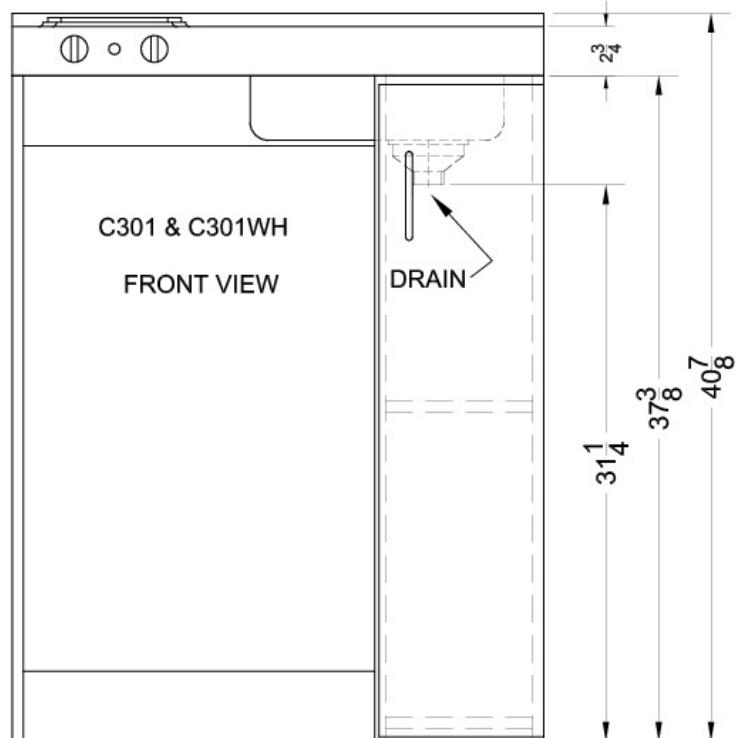
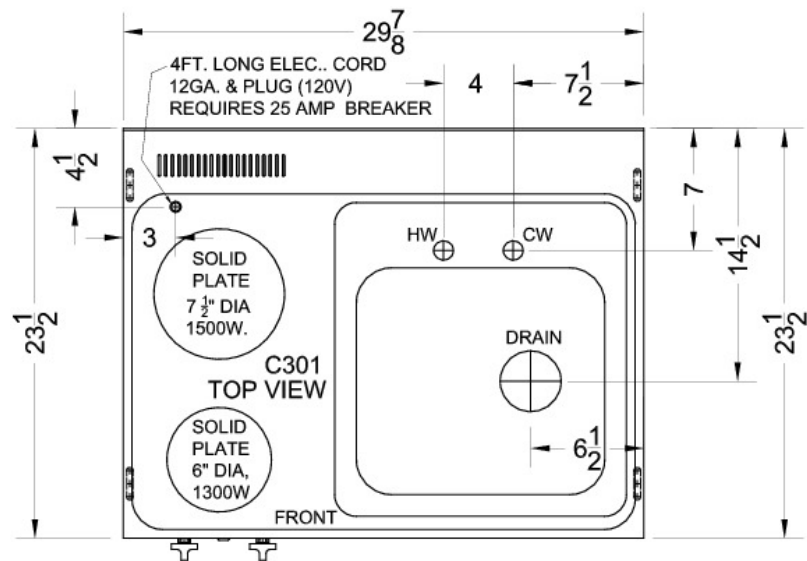
Perfect in small quarters or as a temporary kitchen



Two electric burners	Solid cast iron construction lets you boil and fry with no mess on no-spill surfaces
One piece stainless steel countertop	Easy to clean and built to last
Sink and faucet	Stainless steel sink comes ready to wash
110V Operation	Just plug in and cook
Storage compartment	Convenient cabinet with center shelf lets you store dry goods behind a door
Refrigerator-freezer included	Includes SUMMIT FF41, an automatic defrost refrigerator-freezer with adjustable shelves, door storage, adjustable thermostat, and reversible door
Ships fully assembled	Base model comes in one box. Just slide the refrigerator-freezer into its opening and plug in
100% CFC free	Environmentally friendly design without ozone-damaging chemicals

Specifications:

Height	40.88"
Width	29.88"
Depth	23.5"
Capacity	3.9 cu.ft.
Interior Height 1	22.5"
Interior Width 1	17.0"
Interior Depth 1	14.0"
Interior Height 2	6.0"
Interior Width 2	17.0"
Interior Depth 2	11.0"
Comp Step Height	7.75"
Comp Step Width	17.0"
Comp Step Depth	4.75"
Shipping Weight	224.0 lbs.
Weight	200.0 lbs.
Voltage/Frequency	115 V AC/60 Hz
US Electrical Safety	UL
Amps	20.0
Door Swing	Reversible
Shelf Quantity	3
Adjustable Shelf	true
Shelf Type	Wire
Full Door Shelf Quantity	1
Can Storage	true
Defrost Type	Automatic
Number of Burners	2
Heating Type	Radiant
Burner Temperature Control	Dial
Condensor Location	Rear of Unit
Thermostat Type	Dial
High Side PSI	250.0
Freon Type	R134a
Level Legs Quantity	2
Freon Oz	2.0
Low Side PSI	103.0
Parts/Labor Warranty	1 Year



Summit Appliance Division, Felix Storch, Inc.
770 Garrison Ave • Bronx, NY 10474
Phone: 718-893-3900 • Fax: 718-842-3093
Email: info@summitappliance.com