

The Arthur Dollhouse Kit

#8012

Greenleaf

ASSEMBLY INSTRUCTIONS

• Note: Save the kit box photo for reference during assembly.

Welcome to the exciting world of miniatures! Enjoy building your Arthur dollhouse kit and look forward to a fascinating and rewarding hobby that you and your family can enjoy now and for generations to come.

Before you begin building, read the instructions carefully. Pay particular attention to the "Warm-Up Sheet". It will give you many important tips and should help you to "get off on the right foot"! Before beginning, check to see that you have everything you need.

THIS KIT CONTAINS:

- Pre-cut wood sheets
- 1 silkscreened plastic window sheet
- Instructions
- Schematic diagrams
- Shingles

You'll also need:

- A soft lead pencil with an eraser.
- **Glue.** We strongly recommend a hot melt glue gun and glue sticks (available in most craft, hardware, or miniatures shops). A glue gun will save you considerable time, but if you prefer, it is possible to use any household glue which is suitable for bonding wood. We suggest that you have on hand white or clear household glue for affixing the windows because the glue gun can melt the acetate.
- **Masking tape, empty cans or containers.** The "warm-up sheet" explains how to use tape for applying shingles, and the containers will help keep things organized as you go.
- **Extra sandpaper.**
- A **straight edge or ruler** to help in alignments.
- A **razor, x-acto knife**, or best of all, **amble-type pruning shears** for cutting the shingles.

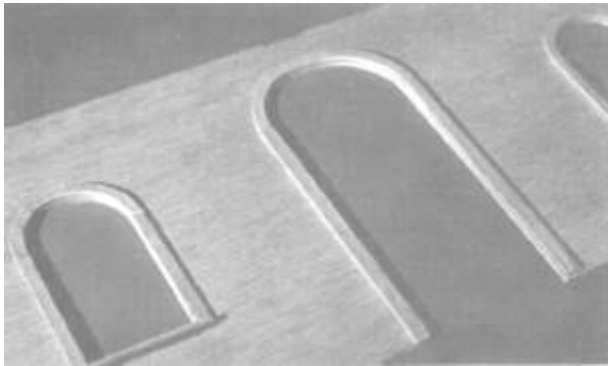
For putting a finish on your house you will need:

- Wood fill
- A fifty-fifty combination of clear shellac and wood alcohol. If you paint your house, you'll require less paint to cover, and sealing helps prevent warping. If you don't paint your house, the seal will keep the wood from drying out. Do not seal the wood if you plan to stain it as the stain won't take.
- Paint, stain, and miniature wallpaper if you choose to finish your house.

Note: Numbers in brackets (6) refer to the sheet number on which that part will be found.

A. WINDOW AND DOOR TRIM

1. Remove and prepare front wall bottom section (5). Find and prepare front wall top section (E), right wall (C) and left wall (B).
2. Remove and prepare all door and window trim, and door molding (1, 2, 3, 11).
3. Lay wall sections flat on work surface with outside facing up. Glue in place all window sills, all side trim, and finally all curved top pieces.



4. Glue in place front door side and curved top trim.
5. Remove all windows from plastic window sheet. Turn all walls over on work surface, run a bead of white glue along the edge of each window opening, center and align the plastic window over the opening, and glue in place. (Note: do not use hot glue on plastic windows!)
6. Glue door molding over the front door sandwiching the plastic window between.

B. FOUNDATION

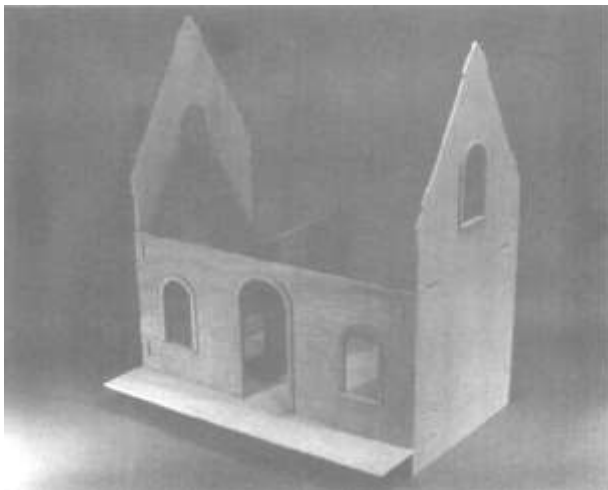
1. Find and prepare the first floor: remove and prepare foundation backwall (10)



2. Lay the first floor flat on work surface good side down. Glue foundation backwall on the first floor piece, along and flush with the back edge.

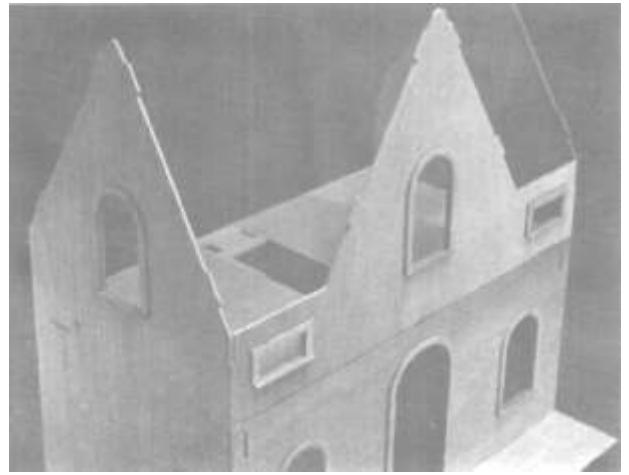
C. WALLS & FLOORS

1. Align right and left walls (9, 9A) with tabs on edge of first floor and flush with end of foundation backwall. Glue in place. (Note: Be sure the vertical edges of the walls without tabs are to the back of house.)



2. Align the front wall bottom section with slots in the first floor and tabs along edge of right and left walls. Glue to first floor first, then walls.

3. Remove and prepare first floor partition (4). Align tabs with slots in first floor. **Glue to first floor only.**



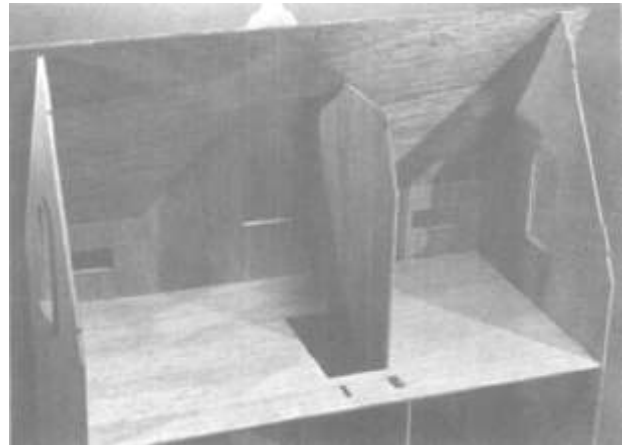
4. Find and prepare second floor. Align with slots in right and left walls, notches along top edge of front wall bottom section, and tabs at top of first floor partition. Glue in place.
5. Align front wall top section (8) with notches in top of the bottom section and the left and right walls. Glue in place.

D. PORCH FOUNDATION

1. Remove and prepare porch foundation ends (8) and porch foundation front wall (10).
2. Preassemble porch foundation front and ends by aligning corresponding slots and gluing in place.
3. Turn the house upside down, align the preassembled porch foundation butting against and flush with the right and left walls, and set in from the front and end edges of the porch. Be sure the two slots in the front piece are along the bottom edge of the house. Glue in place.

E. MAIN ROOF

1. Remove and prepare second floor partition (10) and prepare front roof right section and front roof left section (7).



2. Align second floor partition with long slot along the edge of the stairwell, being sure the angled edge faces to the back of the house.
3. Align front roof left section with tabs on the edge of the left wall. The notch in the roof section sits on the top edge of the second floor partition. Glue to left wall only.
4. Align and glue in place the front roof right section.
5. Butt the edges of the left and right front roof sections together and glue. Sight along the roof peak, when peak is straight, glue left front roof section to the second floor partition, and glue the partition to the front wall.
6. Remove and prepare the back roof (9). Align back roof with tabs on edge of right and left walls and second floor partition. Glue in place.



10 KEYS TO SUCCESSFUL ASSEMBLY OF YOUR ARTHUR DOLLHOUSE

1. Set up a comfortable work area with all supplies handy. A table or smooth surface about 36" by 48" would be great.

2. Carefully follow the instructions in order. Don't jump ahead of yourself! Complete one step before going on to the next.

3. Keep all the wood sheets together in the kit box until they are asked for in the instructions. Return them to the box after needed parts are removed.

4. Don't remove any wood pieces from the sheets until instructed to do so. You will have a hard time figuring out what is what if you have lots of loose pieces around! When you do punch out the pieces, do so CAREFULLY or you may break a part!

5. Follow the schematic diagrams. It will be helpful to lightly write the name of each part in pencil directly on the wood pieces and sheet. This can easily be erased later on.

6. When you see the words REMOVE AND CAREFULLY PREPARE in the instructions it means: (1) "Punch the piece out CAREFULLY from the front to the back. (The front is the side of the wood where the cut marks are clearly visible.) (2) Sand all edges lightly and (3) paint, wallpaper, stain, or otherwise decorate, if desired.

7. ALWAYS work with the smooth finished front side of the wood (the side where the cut marks are visible) facing up or towards the outside of the house unless directed otherwise.

8. Don't glue until instructed to do so! This will give you flexibility in working with the parts. Always check the fit of the pieces before applying the glue.

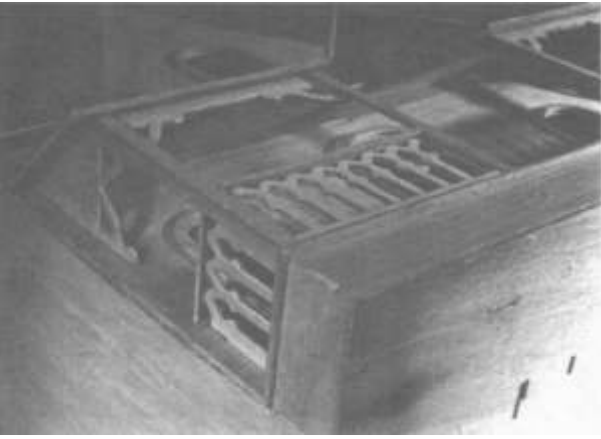
9. If you plan to paint the trim a different color than the rest of the house, paint the house and the parts separately and glue the trim to the house LAST! Again, read the "Warm-up Sheet" before you begin building!! It will give you many important suggestions for wallpapering, painting, electrifying, shingling, and siding your dollhouse.

10. ENJOY yourself. Building a dollhouse is not something that you can complete all in one evening, but it is a craft project of which you will be proud!

- Remove and prepare right and left sections of gable roof (6). Align with tabs on edge of front wall, be sure they align at the peak, and glue in place.

F. PORCH ROOF

- Remove and prepare two porch roof ends (3) porch roof (6) and porch roof gable (6).



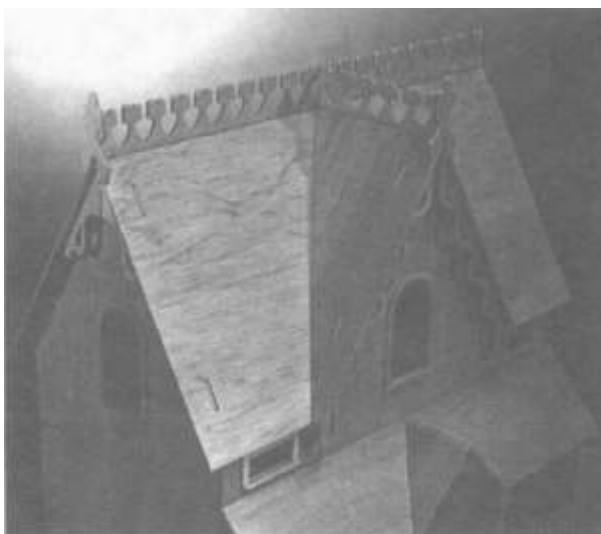
- Align porch roof end pieces with slots in front wall and glue in place.
- Align slots in porch roof with tabs on porch roof ends and glue in place.
- Align right and left sections of porch roof gable with notches in the porch roof, be sure the gable peak aligns, and glue in place.

G. PORCH RAILINGS

- Align tabs on short railing sections with slots in the front wall and glue in place.
- The two porch posts with angled tops align against the outside of the porch end pieces along the front edge and up against the roof. The bottom end aligns inside the L mark embossed on the porch floor. Glue in place, then glue the end of the short railing section to the post. The post overlaps the porch roof end and the short railing about 1/4".
- Glue two long railing sections to the end of the two short sections and the overlapping posts. (At this point the long sections are unsupported at the other end.)
- Notice the ends of the two porch roof trim pieces are not the same. Be sure the wider end of each is towards the center of the porch. Glue them in place against the front edge of the porch roof end pieces and the corner porch posts. (Do not glue to the roof at this point!)
- Glue in place the center porch posts first to the porch floor, then overlapping and flush with the end of the long railing section, and finally overlapping and flush with the end of the porch roof trim. (Be sure the porch roof trim pieces are aligned horizontally.)
- Glue the porch roof trim to the underside of the roof.
- Glue a railing trim piece on top and at the bottom of each of the short and long railing sections.
- Align and glue in place a porch post at both front corners so that the post overlaps and is flush with the corner post already in place.

H. GABLE AND ROOF TRIM

- Remove and prepare all gable and roof trim pieces (1, 2, 3).



- Align and glue in place trim piece for porch roof gable. (Note: all gable trim should be set in from edge of gable about 1/4").
- Align and glue in place long pieces of trim in the front gable.
- Align and glue in place small gable trim pieces in left and right wall gables.
- Glue in place short section of roof trim on the front gable peak. Set it back about 1/4" from the front edge.
- Glue a finial in place at the front edge.
- Glue in place the two long pieces of roof trim end to end along the main roof peak leaving about 1/4" at each end.
- Glue a finial in place at each end of the roof trim.

I. PORCH STEP

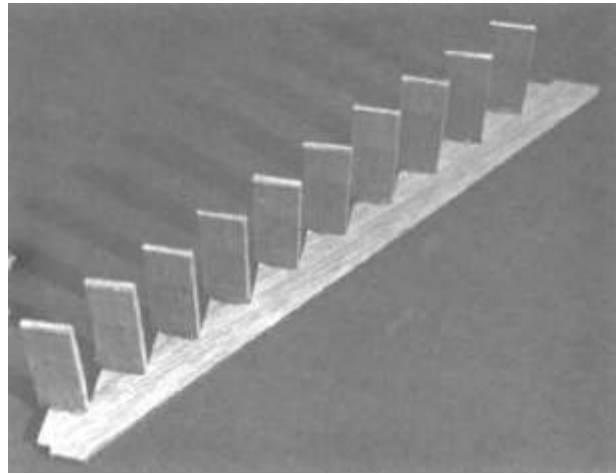
- Remove and prepare porch step parts (4,5). Pre-assemble front step ends and front step riser. (Riser overlaps front edge of side pieces).

- Align this preassembled unit with front step ends in slots in the porch foundation front wall. Glue in place.

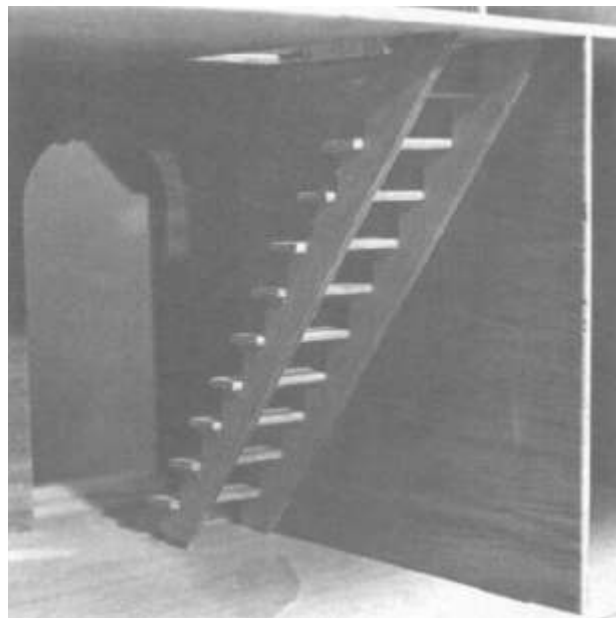
- Center step on riser and glue in place.

J. STAIRCASE

- Remove and prepare ten steps (9A, 8). Find and prepare two staircase sides (8). (Note: the end of the staircase sides with the smaller tab is the bottom and it fits into slots in the first floor.)



- Lay one staircase side flat on work surface with small tab at the left bottom, and the larger tab at the above right. Glue one step on each riser with the end of the steps flush against work surface. Glue on all 10 steps, starting at bottom. (2nd floor becomes top step). (Do not glue on other side at this point!)



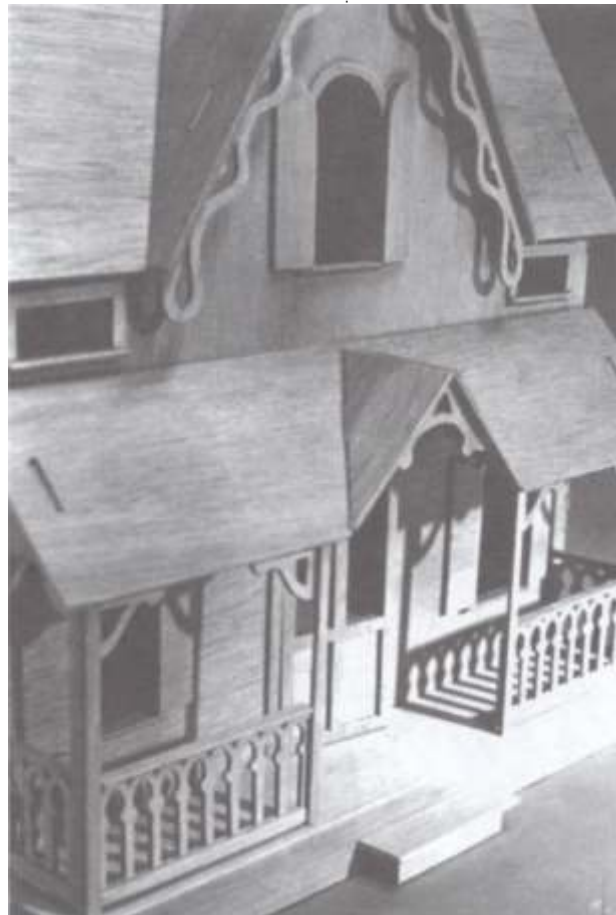
- Install this preassembled unit in the house in the slots in the first and second floors next to the first floor partition.
- Fit the remaining staircase side in place in its slots, be sure the steps are aligned correctly and glue in place. (The steps overlap the right staircase side.)

K. INSTALL DOOR

- Glue in place or hinge the front door.

L. SHUTTERS

- Prepare and glue shutters to each side of window trim, either edge to edge, or overlapping as if they could shut on window.



M. SHINGLING YOUR DOLLHOUSE

The Shingles in this kit come in sheets, so it is possible to apply them in rows. To do this, lay out a sheet of Shingles **good** side up and run a narrow strip of masking tape the full length of each row as close to the top cut as possible. Run it a bit to be sure it's stuck down. Use scissors or an exacto knife along the pre-cut horizontal lines to cut out each strip of Shingles from the sheet. Sand any rough edges. Do this for all the rows.

Note that the Shingles in each row are generally of a uniform color. If you would prefer more variation within each row, then it is easy to cut the Shingles apart and re-create the rows. Again, use scissors or an exacto knife to remove the Shingles from the sheet. Lay out a strip of masking tape about 1/2" in length and on it place a row of individual Shingles **wrong** side up. Each Shingle should butt against the next and the bottom edges should be lined up. Press them down so they stick, and you will now have a row of Shingles. Create as many rows as you need in this fashion.

Refer now to the "Warm-up Sheet" for specific ways in which to attach the Shingles to the Roof. This sheet gives you other variations for creating the rows, and gives you many helpful ideas for applying the Shingles to the Roof. Complete your shingling with the aid of those suggestions.

N. CONGRATULATIONS!

You have just completed your Arthur dollhouse. Enjoy it today and for many years to come!



THE GREENLEAF GUARANTEE

Thank you for buying Greenleaf, the nation's leader in die-cut dollhouses, bringing you quality and dependability for over a decade. We make every effort to bring you our products in perfect condition, but if you find any missing or defective parts during the first 12 months you own this product, please send us a copy of your purchase receipt along with the name and sheet number of the part you need. (This information is found on the schematics.) We'll happily send you a replacement part. If you have any other questions or comments about our products, please contact us directly.

GREENLEAF PRODUCTS INC.
436 Lake Road
Schenevus, NY 12115
1-800-253-7150

The Arthur Dollhouse: 8012
Copyright 1981 Greenleaf Products Inc.
All rights reserved. Made and printed in the USA.

Revised 8/93

8012

© Copyright 1981 Greenleaf Products Inc.
Schenevus, New York 12115
All rights reserved. Made and printed in U.S.A.