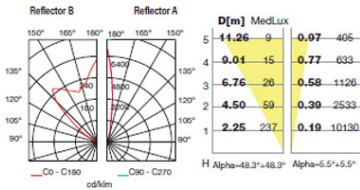




The photograph may not match the reference exactly. Please read the product description to identify the finish.

TECHNICAL CHARACTERISTICS

Type:	UPLIGHT RECESSED
Adjustable:	Adjustable $\pm 15^\circ$ on the vertical axis
IP Protection degrees:	IP67
IK Protection degrees:	IK10
Light source 1:	1 x G12 35W
Total power consumption (W):	45W
Angle of the optics / Reflector:	12°, 100°
Voltage / Frequency:	220-240V/50Hz
Warranty (Years):	2
Units per box:	2
Net Weight (Kg):	4.78
EAN:	8435111059272

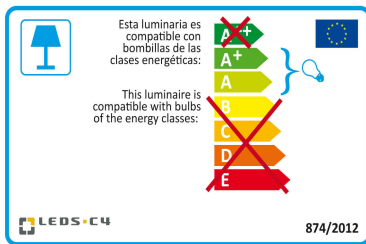

MATERIALS / FINISHES

Structure material:	Stainless steel AISI304 Aluminium	Diffuser material:	Glass
Structure finish:	Polished	Diffuser finish:	Transparent

GEAR

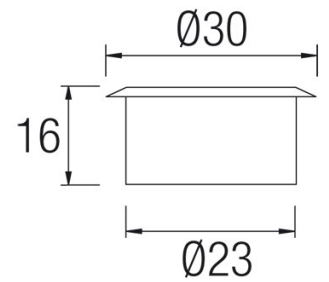
Gear included: Yes, Magnetic

Download photometric file .ldt / .ies



Click on image to download energy label

71-9187-Y4-37

**Structure material:** Stainless steel AISI304**Structure finish:** Polished**Diffuser material:** Glass**Diffuser finish:** TransparentIP67 ^{RF}
850°C

71-9453-CA-CA

**Structure material:** Stainless steel AISI316**Structure finish:** Polished

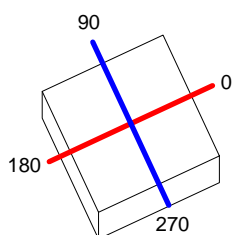
71-9638-CA-CA

**Structure material:** Stainless steel AISI316**Structure finish:** Polished

Luminaire		Measur.		Lamp		
Code	55-9323-Y4	Code	LEDS022	Code	HIE 35/942	
Name	GEA	Name	GEA	Number	1	
Line	Eulumdat	Date	29-04-1994	Position		
Efficiency	79.11%	Coordinate system	CG	Total Flux	3400.00 lm	
Maximum value	23571.52 cd	Position	C=0.00 G=0.00	Asymmetrical		
Rectangular Luminaire	Length	220 mm	Width	220 mm	Height	257 mm
Rectangular Luminous Area	Length	107 mm	Width	107 mm	Height	0 mm
Horizontal Luminous Area	0.011449 m2	Emitting area on Plane 180°		0.000000 m2		
Emitting area on Plane 0°	0.000000 m2	Emitting area on Plane 270°		0.000000 m2		
Emitting area on Plane 90°	0.000000 m2	Glare area at 76°		0.002770 m2		
Symmetry Type	Asymmetrical	Maximum Gamma Angle		180		
Measurement Distance	0.00	Measurement Flux		3400.00 lm		
Operator		Source voltage				
Temperature	25.00 °C	Source current				
Humidity	60.00 %	Photocell				
Notes						

Line		Code		Luminaire Lamps		Flux [lm]	Pow. [W]	Q.ty
Eulumdat		HIE 35/942		Name				
C.I.E.	96 100 100 100 79			D DIN 5040	A60	3400.00	0.00	1
F UTE	0.79 A			B NBN	BZ 1			

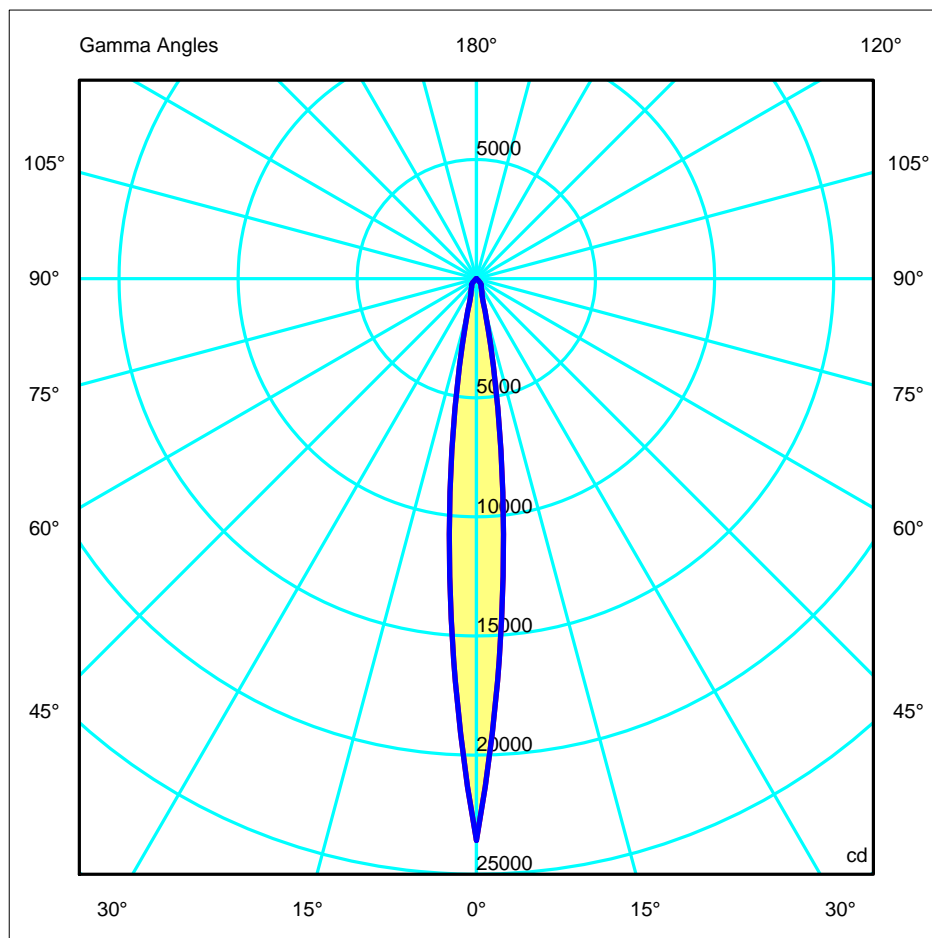
220mm x 220mm



C Halfplanes

180.0 — 0.0
270.0 — 90.0

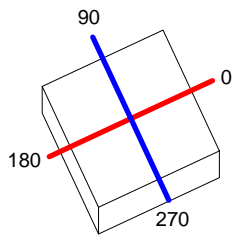
ULOR 0.00 %
DLOR 79.11 %
RN 0.00 %



Luminaire		Measur.		Lamp		
Code	55-9323-B	Code	LEDS023	Code	HIE 35/942	
Name	GEA	Name	GEA	Number	1	
Line	Eulmdat	Date	29-04-1994	Position		
Efficiency	57.45%	Coordinate system	CG	Total Flux	3400.00 lm	
Maximum value	1051.28 cd	Position	C=0.00 G=0.00	Asymmetrical		
Rectangular Luminaire	Length	220 mm	Width	220 mm	Height	257 mm
Rectangular Luminous Area	Length	107 mm	Width	107 mm	Height	0 mm
Horizontal Luminous Area	0.011449 m2		Emitting area on Plane 180°		0.000000 m2	
Emitting area on Plane 0°	0.000000 m2		Emitting area on Plane 270°		0.000000 m2	
Emitting area on Plane 90°	0.000000 m2		Glare area at 76°		0.002770 m2	
Symmetry Type	Asymmetrical	Maximum Gamma Angle		180		
Measurement Distance	0.00	Measurement Flux		3400.00 lm		
Operator	25.00 °C		Source voltage			
Temperature	60.00 %		Source current			
Humidity			Photocell			
Notes						

Line		Code		Luminaire Lamps			Flux [lm]	Pow. [W]	Q.ty
Eulmdat		HIE 35/942		Name					
C.I.E.	62 98 100 100 57			HIE 35/942 - 35.00 W		D DIN 5040	A50		
F UTE	0.57 C					B NBN	BZ 3 / 1.25 / BZ 2		
							3400.00	35.00	1

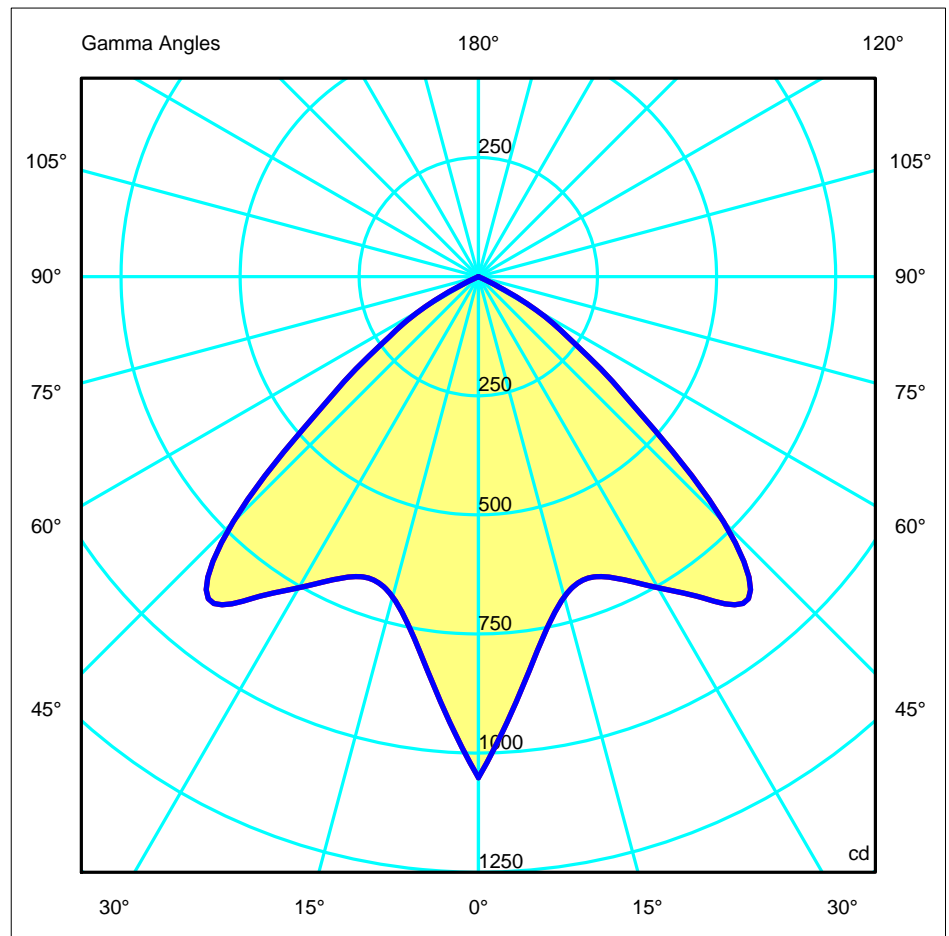
220mm x 220mm



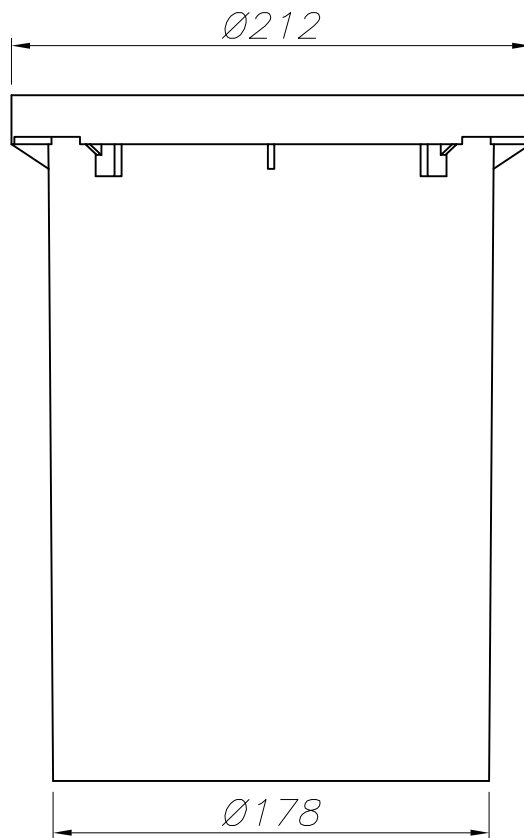
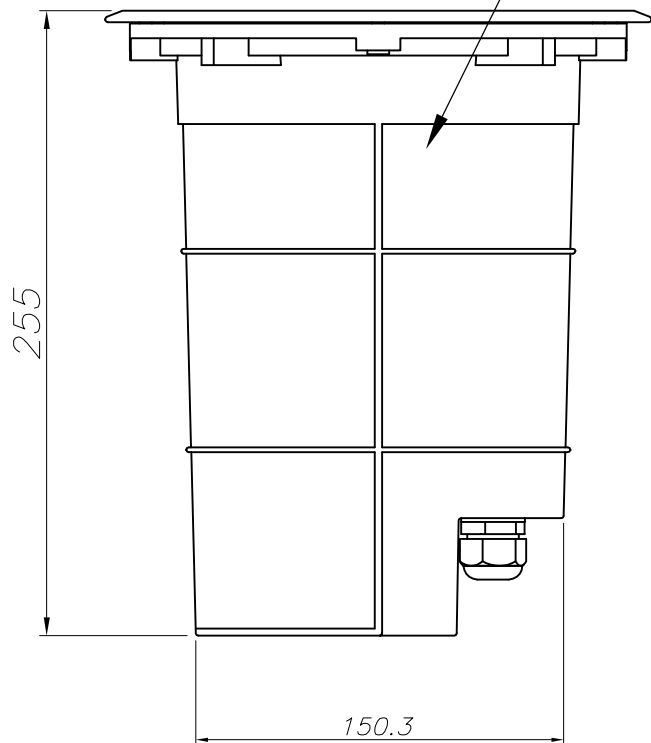
C Halfplanes

180.0	0.0
270.0	90.0

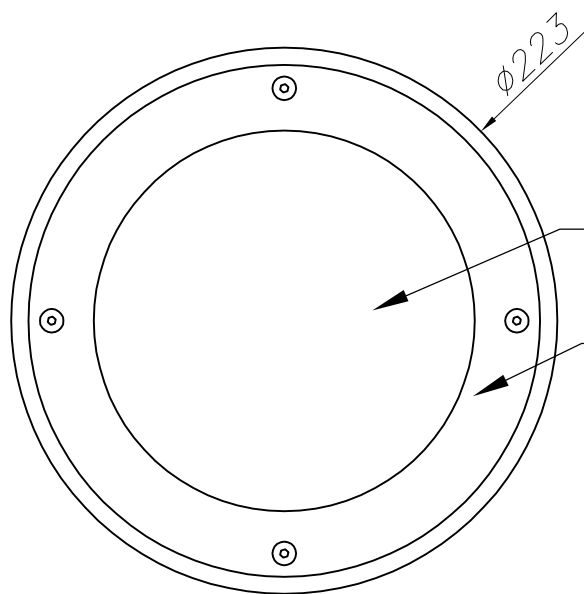
ULOR	0.00 %
DLOR	57.45 %
RN	0.00 %



ALUMINIO INYECTADO
INJECTED ALUMINUM



CAJA DE EMPOTRAR
FLUSH FITTING BOX



CRISTAL TEMPLADO TRANSPARENTE
TEMPERED TRANSPARENT GLASS

ACERO INOXIDABLE AISI 304
STAINLESS STEEL AISI 304

