



#### Limited Two Year Warranty

T&S warrants to the original purchaser (other than for purposes of resale) that such product is free from defects in material and workmanship for a period of two (2) years from the date of purchase, except hose. Hose supplied by T&S carries a 90-day warranty only. During this two-year warranty period, if the product is found to be defective, T&S shall, at its option, repair and/or replace it. To obtain warranty service, products must be returned to...

*T&S Brass and Bronze Works, Inc.  
Attn: Warranty Repair Department  
2 Saddleback Cove  
Travelers Rest, SC 29690*

Shipping, freight, insurance, and other transportation charges of the product to T&S and the return of repaired or replaced product to the purchaser are the responsibility of the purchaser. Repair and/or replacement shall be made within a reasonable time after receipt by T&S of the returned product. This warranty does not cover items which have received secondary finishing or have been altered or modified after purchase, or for defects caused by abuse to or misuse of the product, or shipment of the products.

Any express warranty not provided herein, and any remedy for Breach of Contract which might arise, is hereby excluded and disclaimed. Any implied warranties of merchantability or fitness for a particular purpose are limited to two years in duration. Under no circumstances shall T&S be liable for loss of use or any special consequential costs, expenses or damages.

Some states do not allow limitations on how long and implied warranty lasts or the exclusion or limitation of incidental or consequential damages, so the above limitations or exclusions may not apply to you. Specific rights under this warranty and other rights vary from state to state.

P/N: 098-014921-45 Rev.5  
Date: 03-19-10  
Drawn: TEH  
Checked: DMH 06-16-10  
Approved: JHB 06-16-10

# Installation and Maintenance Instructions

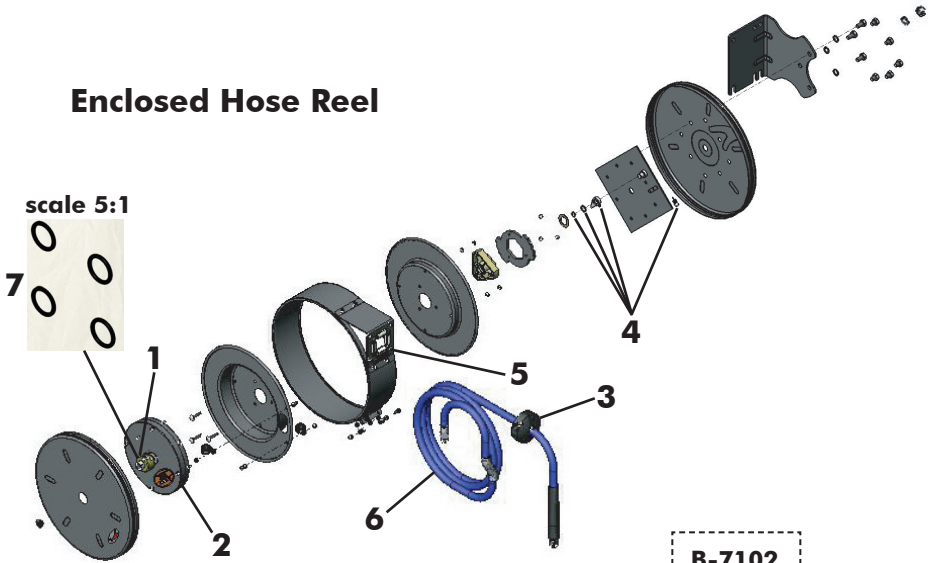


## B-7000-SERIES EPOXY POWDER COATED & STAINLESS STEEL REELS

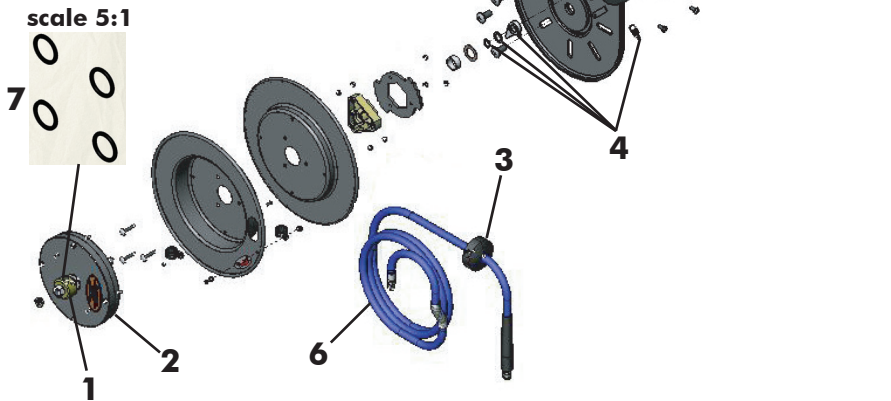
U.S. Patent #D551,945

# Exploded View

## Enclosed Hose Reel



## Open Hose Reel



# Part Number Guide

## SWIVEL KITS - 1

PART NUMBER	HOSE I.D.	HOSE LENGTH	MAX. PRESSURE
014946-45	3/8"	N/A	300 psi
017355-45	3/8"	12'	300 psi
* 014947-45	1/2"	N/A	300 psi

## SPRING ASSEMBLIES - 2

PART NUMBER	HOSE I.D.	HOSE LENGTH	MAX. PRESSURE
017362-45	3/8"	12'	300 psi
014932-45	3/8"	15'/30'/35'	300 psi
014934-45	3/8"; 1/2"	35' (1/2" Only)/50'	300 psi
014933-45 (S/S)	3/8"	15'/30'/35'	300 psi
014935-45 (S/S)	3/8"	50'	300 psi

## HOSE STOP KITS - 3

PART NUMBER	HOSE I.D.	HOSE LENGTH	MAX. PRESSURE
G016590-45	3/8"	12'	300 psi
014949-45	3/8"	N/A	300 psi
* 014950-45	1/2"	N/A	300 psi

## RATCHET KITS - 4

PART NUMBER	HOSE I.D.	HOSE LENGTH	MAX. PRESSURE
017359-45	3/8"	12'	300 psi
014940-45	3/8"; 1/2"	15'/30'/35'/50'	300 psi

## ROLLER/HOSE GUIDE KITS - 5

PART NUMBER	HOSE I.D.	HOSE LENGTH	MAX. PRESSURE
017352-45	3/8"	12'	300 psi
** 015996-45	3/8"	15'	300 psi
014936-45 (ES)	3/8"	30'	300 psi
014938-45	3/8"; 1/2"	15'/35'/50'	300 psi
014937-45 (EL)	3/8"; 1/2"	50'	300 psi

S/S = Stainless Steel

ES = Enclosed Small

EL = Enclosed Large

\* Limited Quantities Available

\*\* For use with Hose Reel 089-015401-45

# Part Number Guide

## HOSE KITS - 6

PART NUMBER	HOSE I.D.	HOSE LENGTH	MAX. PRESSURE
017938-45	3/8"	12'	300 psi
014944-45	3/8"	15'	300 psi
014943-45	3/8"	30'	300 psi
014941-45	3/8"	35'	300 psi
014942-45	3/8"	50'	300 psi
* 015089-45	1/2"	35'	300 psi
* 014945-45	1/2"	50'	300 psi

## O-RING KIT - 7

PART NUMBER	HOSE I.D.	HOSE LENGTH	MAX. PRESSURE
014948-45	ALL	ALL	300 psi

S/S = Stainless Steel

ES = Enclosed Small

EL = Enclosed Large

**\* Limited Quantities Available**

**\*\* For use with Hose Reel 089-015401-45**

# General Instructions

## Important Safety Instructions

**DANGER:** Immediate hazards which will result in severe personal injury or death.

**WARNING:** Hazards or unsafe practices which could result in severe personal injury or death.

**CAUTION:** Hazards or unsafe practices which may result in minor personal injury or product or property damage.

**WARNING:** Failure to read, understand or follow these instructions could lead to hazards or unsafe practices which could result in severe personal injury or death.

**CAUTION:** Operators need to be instructed on the safe, proper use and maintenance of this product. Keep this manual for future reference. Hazards or unsafe practices may result in minor personal injury or product or property damage.

**TOOLS:** (a) wrench: 10mm, 13mm, 16mm & 19mm; (b) nut driver: 8mm and 10mm; (c) needle-nose pliers (d) cross-recess screw driver #2, and (e) external retaining ring pliers. B-7102 models include a flat wrench.

## Installation

### MOUNTING

Reels complete with hose come set at proper tension and are ready to install. (Fig. 1) Fixed base of reel allows mounting in several different positions including wall mount, base down, or base up. If moving guide arm, three nuts (17mm SS or 19mm painted) on side of reel must be removed. If reel is enclosed version, remove and mount base to surface, then attach reel to base.

### MOUNTING B-7102

The B-7102 mounting flange is part of the support frame. This hose reel can be positioned as wall mounted (as shipped) or base up. To convert from one position to another:

- Temporarily clamp unit to a work surface. Remove all tension from reel; see "Tension Adjustment."
- Slide flat wrench provided between spool assembly and support frame onto shaft to hold it from turning during the next step.
- Loosen but do not remove the shaft nut (22mm hex) until the shaft is free to turn in the support frame hole.
- Remove the (2) screws securing the hose guide bracket, move the bracket to the desired location and reinstall the screws.
- Turn the spool and shaft relative to the support frame until the hose fitting at the formed metal tube assembly is parallel with the hose guide bushing centerline.
- Retighten the shaft nut. Re-tension reel (see "Tension Adjustment")

# General Instructions

## Installation

### General Mounting Requirements

- (Fig. 2) Main-shaft must be horizontal.
- (Fig. 3a) Swivel inlet must be connected with flexible hose. Rigid pipe may cause premature wear and affect performance.
- (Fig. 3b) Centerline of spool assembly must be in-line with hose pull out. To adjust guide arm, remove screws holding it to base and rotate to desired group of mounting holes.
- Qualified personnel must evaluate wall or ceiling fastening. Mounting through the (4) 1/2" dia. holes on the base may vary due to surface materials. A possible method for concrete, brick and cement block is a sleeve anchor type stud fastener (fig. 4) instead of, sometimes difficult to install, long lag bolts.

Fig. 1

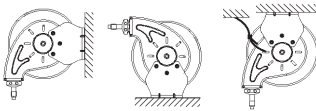


Fig. 2

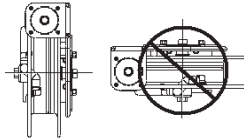


Fig. 3a

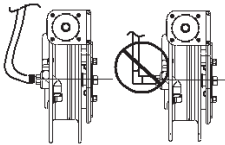


Fig. 3b

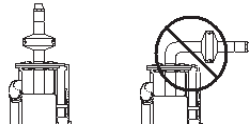


Fig. 4



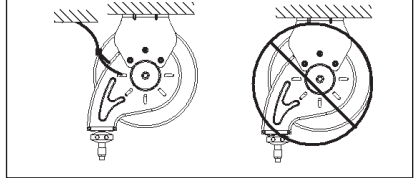
# General Instructions

## SECONDARY SUPPORT

**WARNING:** A secondary support chain is required for all objects mounted over head to protect personnel in case of failure in mounting hardware or structure.

- (Fig. 5) Attach support cable/chain to one of the slots in guide arm. Other end of support cable to be attached to a support other than the main one supporting the hose reel.
- The safety chain/cable should allow reel to drop no more than 6 to 12 in. if primary connection is released.

Fig. 5



## Adjustment

### RATCHET LOCK

**CAUTION:** To avoid damage to the reel or personnel, always hold on to hose while it is rewinding. Hazards or unsafe practices which may result in minor personal injury or product or property damage.

- Ratchet “clicks” four times every half-spool revolution.

Note: For B-7102 ratchet clicks five times every full revolution.

- (Fig. 6) To latch reel, slowly pull out hose and allow it to retract after clicks 1-4.
- (Fig. 7) To unlatch, slowly pull out hose until “clicking” stops, then let hose rewind until hose stop rests against guide.
- To disable ratchet, see section in servicing on “Ratchet Lock Replacement/Removal”.

Fig. 6

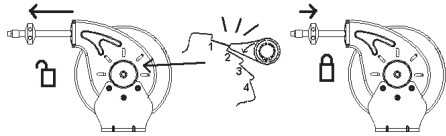
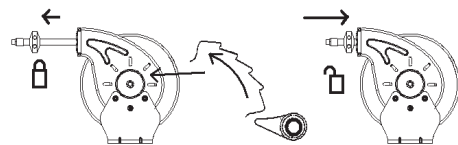


Fig. 7



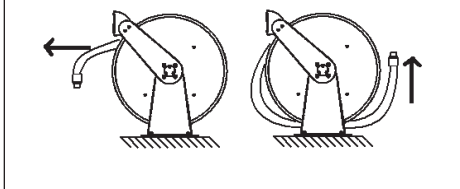
# General Instructions

## TENSION ADJUSTMENT

**CAUTION:** Always leave at least 1-2 turns between full extension and when the spring is wound tight. If entire hose cannot be pulled out, decrease tension until full extension is possible. Failure to test for adequate spring revolutions can cause damage to reel. Hazards or unsafe practices may result in minor personal injury or product or property damage.

- Reels shipped with hose are pre-tensioned at factory. Reels shipped without hose are pre-tensioned after installing hose, but before making final hose or inlet connections.

Fig. 8



- (Fig. 8) To pre-tension hose reel, pull hose out to allow one full wrap of hose to be looped back over drum assembly. Hold drum from turning by engaging ratchet (fig.6). and loop hose back on drum. Repeat until desired tension is achieved. After tension is set, pull out hose. If full hose extension is not possible, remove pre-tension turns as needed by reversing process.

## Service

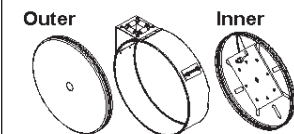
**CAUTION:** Remove all tension before servicing. Hazards or unsafe practices may result in minor personal injury, product or property damage.

**WARNING:** Before performing any service, always disconnect and lock out compressed air or fluid, and remove all spring tension. Hazards or unsafe practices could result in severe personal injury or death.

## ENCLOSED HOSE REELS

- Enclosed hose reels require additional steps to remove outer and middle covers (fig 9.1) before performing service. Cover is removed by loosening (2) 10 mm nuts. Reinstall with middle cover edge as shown (fig 9.2).

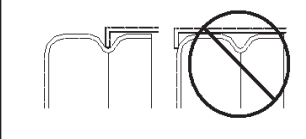
Fig. 9.1



## HOSE INSTALLATION AND REPLACEMENT

- Remove all tension from reel (see Tension Adjustment). Remove hose-stop, unwind hose from reel, remove strain-relief (8mm nut) and unscrew hose from its connection point (depending on model, swivel tee or metal tube assembly). Feed new hose through roller guide and through slot in flange (except on B-7102). Reattach hose to its connection (use thread sealant or Teflon tape for male threaded hose fittings; the metal tube assembly on B-7102 does not require thread sealant). Reattach strain relief clamp, wind onto drum assembly and re-tension reel.

Fig. 9.2





# General Instructions

## RATCHET LOCK REPLACEMENT/REMOVAL

To replace or remove ratchet:

- Turn off or lockout air/fluid supply to reel
- Remove all tension, see “Tension Adjustment”
- (Fig. 10.1) Remove spool from stand (24mm or 22mm nut)
- (Fig. 10.2) Replace or remove ratchet lock and spring (small external retaining ring pliers or **for B-7102, 10mm hex retaining nuts**)
- Replace spool and tighten shaft nut (24mm or 22mm)
- Retension, see “Tension Adjustment”

Ratchet plate is secured with 10mm nuts. The B-7102 ratchet plate is not replaceable.

Fig. 10.1

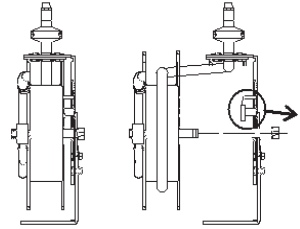
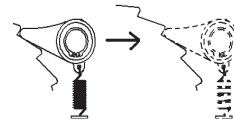


Fig. 10.2



## MAIN-SPRING ASSEMBLY REPLACEMENT

**WARNING: Never remove spring from its sealed container. Replacement springs are in a sealed assembly for safety. There is no need to remove them. Serious injury or death could result from removal of spring from its container.**

*NOTE: If spring is to be replaced when not broken make sure to remove all tension before proceeding.*

If reel has no retraction tension, then main-spring likely needs replacement.

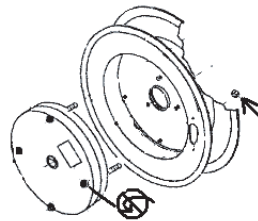
To replace main-spring (all models **except** B-7102):

- Turn off or lockout air/fluid supply to reel
- Remove supply hose to swivel
- Remove swivel by loosening its hex end (round body is 24mm or square body is 27mm)
- Remove retaining ring (medium external retaining ring pliers) and spacer washers from main-shaft

*NOTE: If plastic spool, complete spool/axle assembly is replaced.*

- Pull spring pocket assembly, with spool, off drum axle (if plastic spool, axle is part of spool assembly)
- (Fig. 11) Remove nuts (10mm) holding spring pocket to spool, install new containerized spring
- Reverse procedure to reassemble (use Teflon tape or sealant on hose connections) and retension reel, see “Tension Adjustment”

Fig. 11



# General Instructions

## B-7102 MAIN-SPRING ASSEMBLY REPLACEMENT

To replace model B-7102 main spring:

- Turn off or lockout air/fluid supply to reel and bleed off remaining pressure. Remove supply hose to inlet swivel.
- Remove all tension; see "Tension Adjustment." Unwind hose from reel and remove hose clamp (8mm nut).
- Disconnect metal tube assembly from swivel inlet (1 1/16" swivel nut).
- Slide flat wrench provided between spool assembly and support frame onto shaft to hold it from turning during the next step.
- Remove spool from mounting frame (22mm nut)
- Remove inlet swivel assembly by loosening hex end (25mm)
- Remove (4) Philips head screws and take off outer drum half.
- Remove (3) nuts (10mm).
- Remove then replace main-spring assembly. Install (3) nuts (10mm).
- Reverse procedure to reassemble and re-tension reel (see "Tension Adjustment")

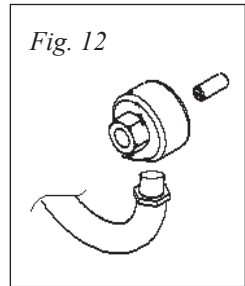
## SWIVEL REPLACEMENT

*NOTE: Swivel only sold as complete assembly. If o-rings leak, complete swivel must be replaced.*

To replace swivel:

- Turn off or lockout air/fluid supply to reel
- Remove all tension from reel (see "Tension Adjustment")
- Disconnect supply hose to swivel
- (Fig. 12) Remove swivel by loosening hex end. Disconnect spool hose or on B-7102 models, the metal tube assembly.
- Reverse above procedure and install new swivel (use Teflon tape or sealant on connections; on B-7102 models the metal tube assembly does not require thread sealant)

Fig. 12



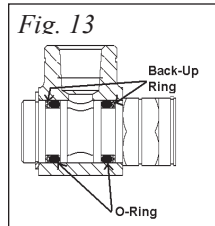
## O-RING REPLACEMENT

**CAUTION: Carefully replace o-rings making sure not to damage machined sealing surfaces. O-ring life and sealing ability may otherwise be affected. Hazards or unsafe practices may result in minor personal injury, product or property damage.**

To replace o-ring:

- Remove swivel from reels as "Swivel Replacement" procedure
- Remove retaining ring and slowly remove outer swivel from inner shaft
- Remove old o-rings and back-up rings
- (Fig. 13) Install new o-rings and back-up rings, using supplied lubricant
- Reverse above procedure and install new swivel (use Teflon tape or thread sealant on hose connections; on B-7102 models the metal tube assembly does not require thread sealant.)

Fig. 13



# General Instructions

## Preventative Maintenance

### HOSE

- Check wear near hose-stop and end fitting. If barb fitting or hose is damaged cut off hose end and reattach new barb fitting and clamp.
- Check wear along entire hose length. Replace if needed.

### SWIVEL

- Check leaks by spraying with soapy water from hand spray bottle. If bubbles form, replace swivel.

### ROLLER/HOSE GUIDE

- Check rollers for wear. If rollers on one side have more wear than the other side, then guide position might need re-adjustment.

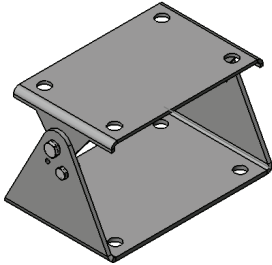
### MOUNTING

- Check tightness of mounting bolts and condition of safety cable/chain and attachment points.

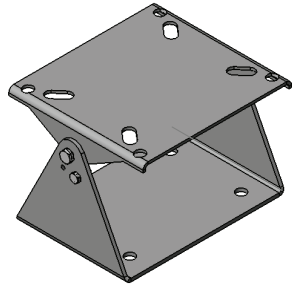
## ACCESSORIES

### ACCESSORIES

PART NUMBER	PART DESCRIPTION	HOSE LENGTH	MAX. PRESSURE
G016636-45	Swing Bracket	3/8" x 12', 15', 30', 35'	ALL
G016637-45	Swing Bracket	3/8" x 50'; ALL 1/2"	ALL
G016737-45	S/S Swing Bracket	ALL	ALL
G016652-45	Pivot Bracket	ALL	ALL



**Swing Bracket**

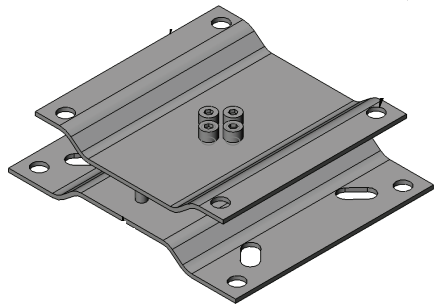


**Stainless Steel  
Swing Bracket**



**B-0963**

**Continuous Pressure  
Vacuum Breaker**



**Pivot Bracket**

## T&S BRASS AND BRONZE WORKS, INC.

A firm commitment to application-engineered plumbing products

2 Saddleback Cove, P.O. Box 1088,  
Travelers Rest, SC 29690

Phone: (864) 834-4102  
Fax: (864) 834-3518

E-mail: [tsbrass@tsbrass.com](mailto:tsbrass@tsbrass.com)

T & S Brass-Europe  
'De Veenhoeve'  
Oude Nieuwveenseweg 84  
2441 CW Nieuwveen

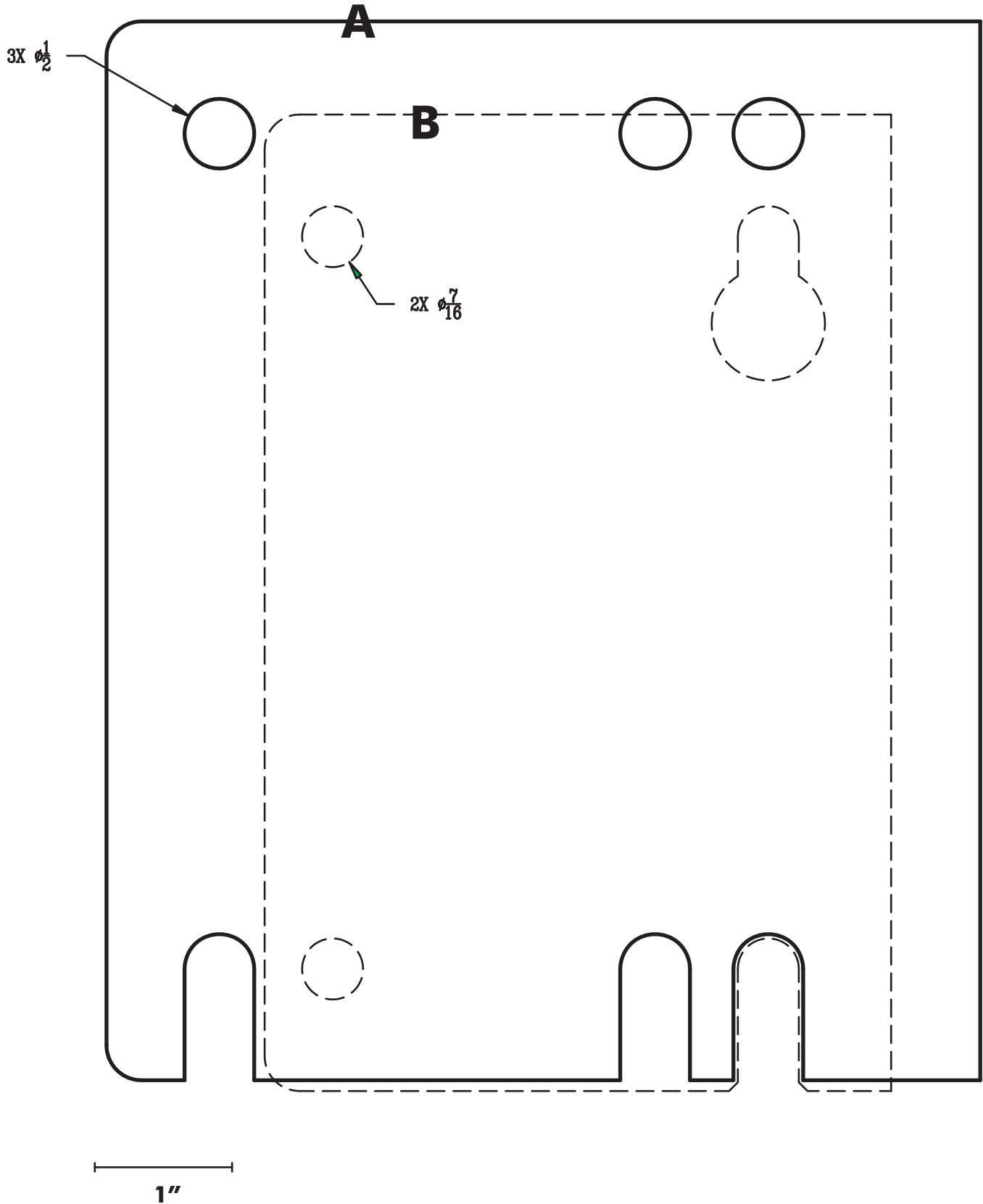
The Netherlands



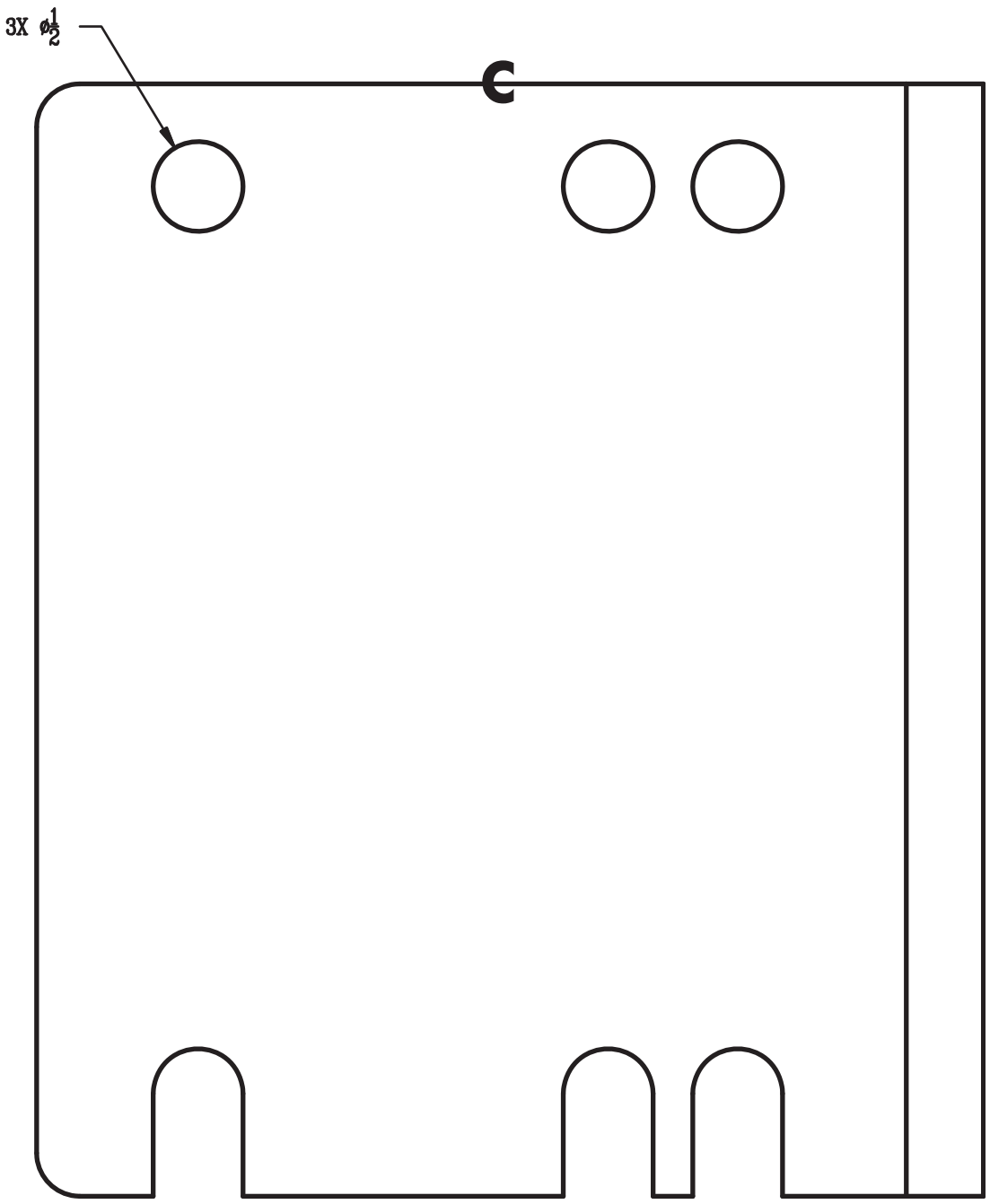
**RELIABILITY BUILT IN™**

Use Mounting Diagram A (solid line) for: B-7242, B-7233, B-7142, B-7133,  
B-7143, B-7242-C, B-7243-C, B-7142-C

Use Mounting Diagram B (dotted line) for: B-7102



**Use Mounting Diagram C for: B-7212, B-7232, B-7112, B-7132,  
B-7222-C, B-7122-C**



1"